

# STEALTH

3528 Hayden Avenue

## A BOLD SPACE FOR BOLD IDEAS

The Stealth is a prominent three-story office building in the heart of the Hayden Tract. Designed by the acclaimed Eric Owen Moss and developed by Samitaur Constructs, it is an iconic space that fosters creativity and collaboration. With its distinct architectural design and vibrant surroundings, The Stealth is an inspiring place for businesses seeking a space that reflects their innovative spirit.

Located at Hayden Avenue and National Boulevard, The Stealth offers easy access to the Expo Light Rail station and is just steps away from a variety of dining options and other key amenities, making it the premier location for businesses looking to grow and connect.



**AVAILABLE NOW: 3,383 - 14,545 RSF**

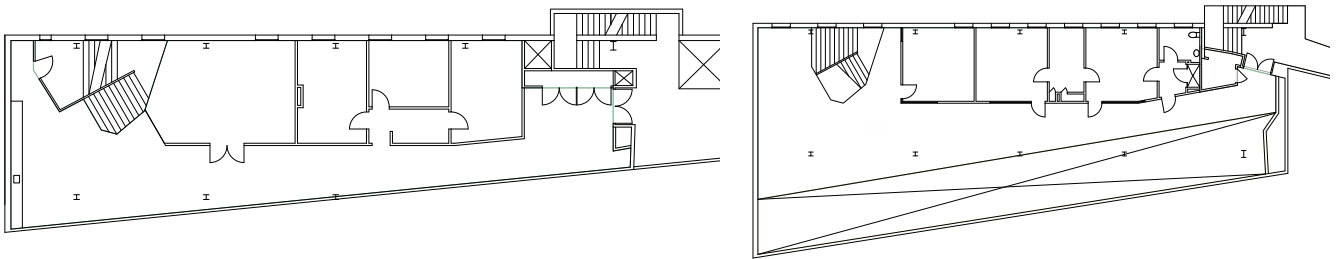


# ROOM FOR BIG IDEAS

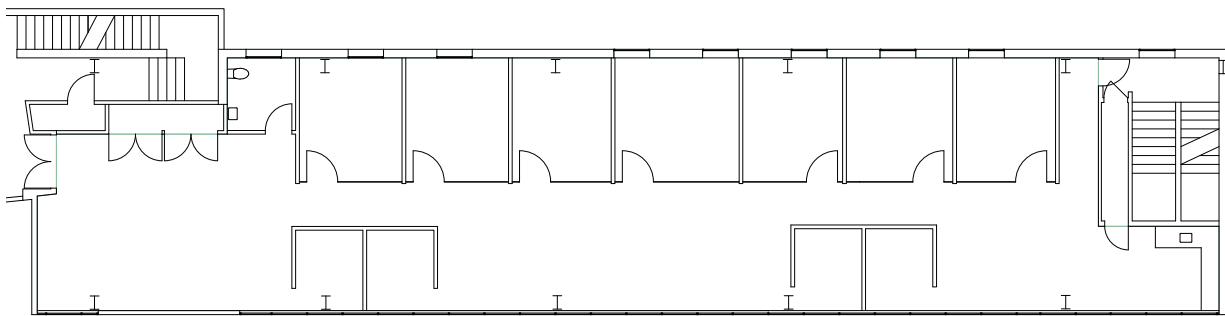
The Stealth offers versatile floorplans that encourage creativity and teamwork. With a mix of open work areas, private offices, and collaborative zones, the space adapts to your team's needs.

**AVAILABLE NOW: 3,383 - 14,545 RSF**

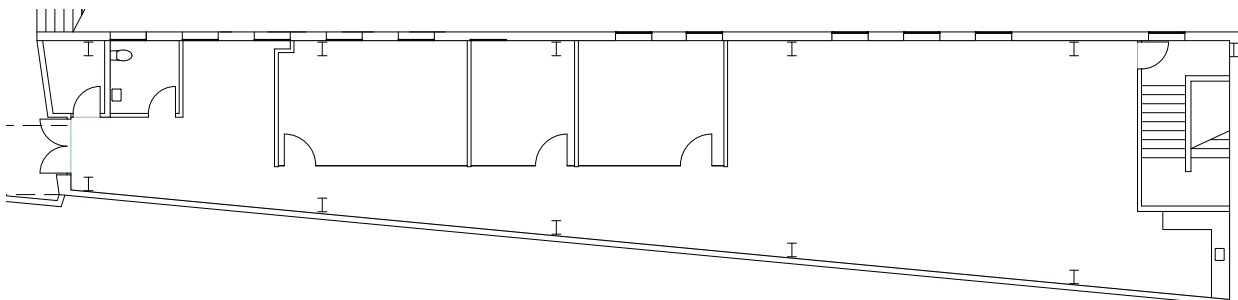
## 2ND FLOOR NORTH | TWO LEVELS | 7,434 RSF



## 2ND FLOOR SOUTH | 3,728 RSF



## 3RD FLOOR SOUTH | 3,383 RSF



# THE FOREFRONT OF LA'S CREATIVE SCENE

The Stealth empowers you to thrive in the creative epicenter of Westside LA, surrounded by industry leaders like HBO, Apple and Disney Digital. This dynamic location offers a hub of inspiration, providing endless opportunities to connect and collaborate with top minds in tech, media, and entertainment.



CULVER STEPS

NANTWORKS

AMAZON

CHOW NOW

MARKETCAST

HBO

APPLE

APPLE/  
BEATS BY DRE

SMASHBOX  
STUDIOS

VESPERTINE

DESTROYER

PLATFORM

SCOPELY

DISNEY DIGITAL

UCLA

WILD CARD  
MEDIA

ZAMBEZI

ZOIC STUDIOS

GROUP  
NINE

JAM CITY

3528 HAYDEN

BALLONA CREEK BIKE PATH

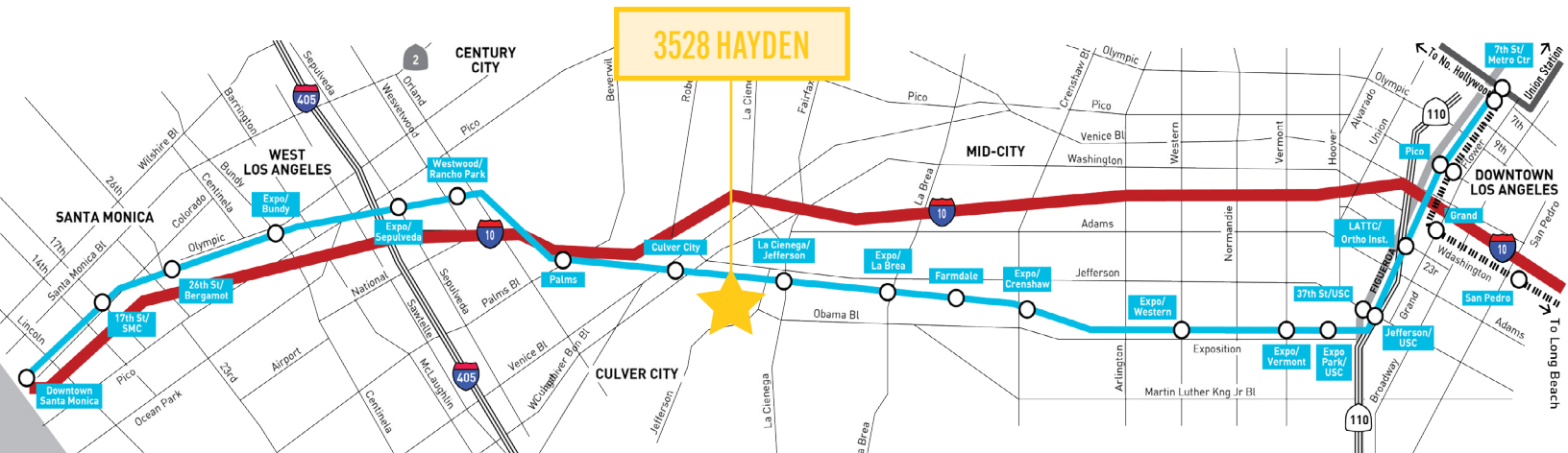
METRO EXPO LINE

PARKING RATIO: 3:1,000 RSF

\$175 UNRESERVED | \$275 RESERVED

# YOUR LINK TO THE CITY

With easy access to I-405 and I-10, The Stealth puts you minutes from West Los Angeles, Santa Monica, and Century City, streamlining your daily commute. The nearby Ballona Creek Bike Path, a favorite among walkers, runners, and bikers, offers a scenic route straight to Santa Monica Bay, connecting you to the best of the Westside.



For More Information, Please Contact:

## GABRIEL BROWN

+1 310 435 4344  
gabe.brown@jll.com  
CA Lic. 01441920

## JOSH BERNSTEIN

+1 310 795 5947  
josh.bernstein@cushwake.com  
CA Lic. 01828093

## ALEXA DELAHOKE

+1 626 340 5391  
alexa.delahooke@cushwake.com  
CA Lic. 02091695

©2025 Cushman & Wakefield. All rights reserved. The information contained in this communication is strictly confidential. This information has been obtained from sources believed to be reliable but has not been verified. NO WARRANTY OR REPRESENTATION, EXPRESS OR IMPLIED, IS MADE AS TO THE CONDITION OF THE PROPERTY (OR PROPERTIES) REFERENCED HEREIN OR AS TO THE ACCURACY OR COMPLETENESS OF THE INFORMATION CONTAINED HEREIN, AND SAME IS SUBMITTED SUBJECT TO ERRORS, OMISSIONS, CHANGE OF PRICE, RENTAL OR OTHER CONDITIONS, WITHDRAWAL WITHOUT NOTICE, AND TO ANY SPECIAL LISTING CONDITIONS IMPOSED BY THE PROPERTY OWNER(S). ANY PROJECTIONS, OPINIONS OR ESTIMATES ARE SUBJECT TO UNCERTAINTY AND DO NOT SIGNIFY CURRENT OR FUTURE PROPERTY PERFORMANCE.  
COE-PM-West-07.24.2025

