



Office Sublease

Ribtor East

SUBLEASE DETAILS

FLOOR	Main
RENTABLE AREA	± 6,138 SF
SUBLEASE RATE	Market
2026 ADDITIONAL RENT	\$16.63 PSF
SUBLEASE EXPIRY	May 30, 2032
PARKING	5 Underground 1 Surface
OCCUPANCY	30 - 90 Days

OPPORTUNITY OVERVIEW

- » Rare opportunity to sublease 6,138 SF of Main floor office space in Ribtor East.
- » Located in Calgary's Beltline district
- » Convenient access to City Centre
- » Secure underground parking available
- » Easy walking distance to public transportation

For more information, please contact:

Loveleen Bhatti, Executive VP
+1 403 973 4360
lbhatti@naiadvent.com

Roseleen Bhatti, Executive VP
+1 403 605 2294
rbhatti@naiadvent.com

Sobey Salem, Brokerage Services
+1 403 862 8615
ssalem@naiadvent.com

PROPERTY LOCATION



PROPERTY MAP VIEW



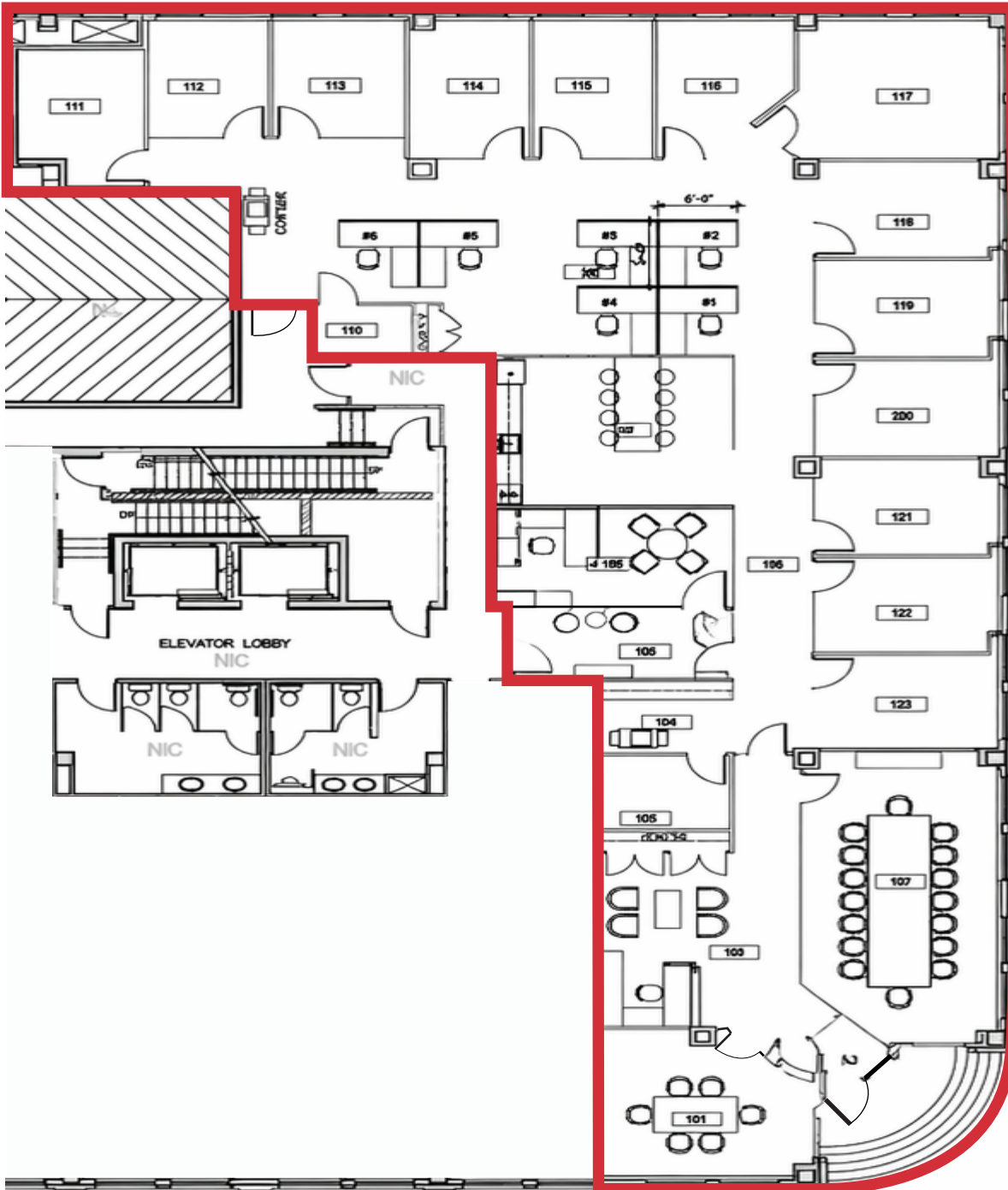
For more information,
please contact:

Loveleen Bhatti, Executive VP
+1 403 973 4360
lbhatti@naiadvent.com

Roseleen Bhatti, Executive VP
+1 403 605 2294
rbhatti@naiadvent.com

Sobey Salem, Brokerage Services
+1 403 862 8615
ssalem@naiadvent.com

FIRST FLOOR PLAN



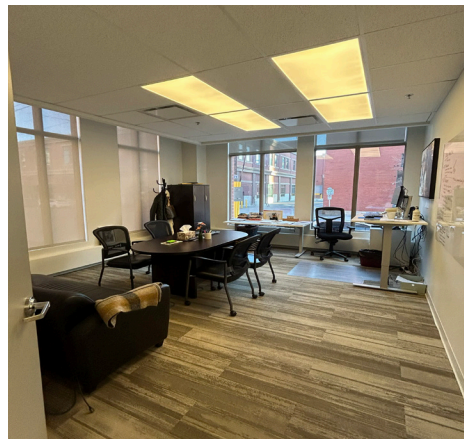
SUITE DETAILS
±6,138 SF

Existing Buildout:

- » 14 Offices
- » Kitchen
- » Board Room
- » Meeting Room
- » Open Area for Workstations
- » Reception
- » Copy Area

For more information, please contact:

Loveleen Bhatti, Executive VP	Roseleen Bhatti, Executive VP	Sobey Salem, Brokerage Services
+1 403 973 4360	+1 403 605 2294	+1 403 862 8615
lbhatti@naiadvent.com	rbhatti@naiadvent.com	ssalem@naiadvent.com



THIS BROCHURE IS INTENDED FOR INFORMATION PURPOSES ONLY AND SHOULD NOT BE RELIED UPON FOR ACCURATE FACTUAL INFORMATION BY THE RECIPIENTS HEREOF. THE INFORMATION CONTAINED HEREIN IS BASED ON INFORMATION WHICH NAI ADVENT DEEMS RELIABLE, HOWEVER, NAI ADVENT ASSUMES NO RESPONSIBILITY FOR THE DEGREE OF ACCURACY OF SUCH INFORMATION, NOR DOES NAI ADVENT REPRESENT OR WARRANT THE INFORMATION CONTAINED HEREIN. RECIPIENTS HEREOF SHOULD CONDUCT THEIR OWN INVESTIGATIONS TO DETERMINE THE ACCURACY OF INFORMATION CONTAINED HEREIN. THE INFORMATION CONTAINED HEREIN IS SUBJECT TO CHANGE WITHOUT NOTICE.

For more information, **Loveleen Bhatti, Executive VP**
please contact: +1 403 973 4360
lbhatti@naiadvent.com

Roseleen Bhatti, Executive VP
+1 403 605 2294
rbhatti@naiadvent.com

Sobey Salem, Brokerage Services
+1 403 862 8615
ssalem@naiadvent.com