

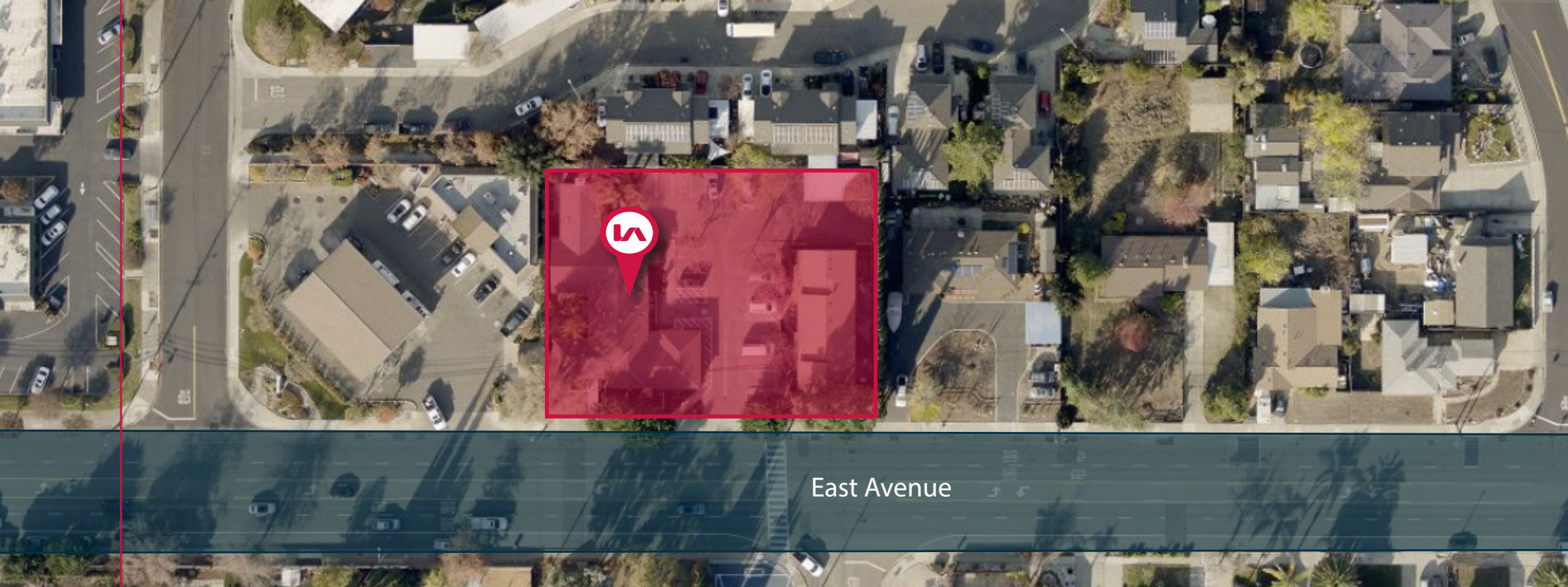


GOOGLE

FOR LEASE 2,554±SF DENTAL OFFICE

4200 EAST AVENUE, SUITE 100, LIVERMORE, CA 94550

LOCAL EXPERTISE. INTERNATIONAL REACH. WORLD CLASS.



East Avenue

PROPERTY HIGHLIGHTS



Suite 100: 2,554±SF

- Former orthodontic office with eight (8) open bay operatories
- Three (3) additional rooms are plumbed for private operatories
- Two (2) Doctor's Offices
- Dedicated pano x-ray room
- Staff lounge
- Lab/sterilization
- Three (3) private restrooms
- On-deck TV & Gaming area
- Large reception and waiting room
- Five (5) separate entry/exit doors throughout
- Outside deck/courtyard area for additional waiting area
- Ample parking



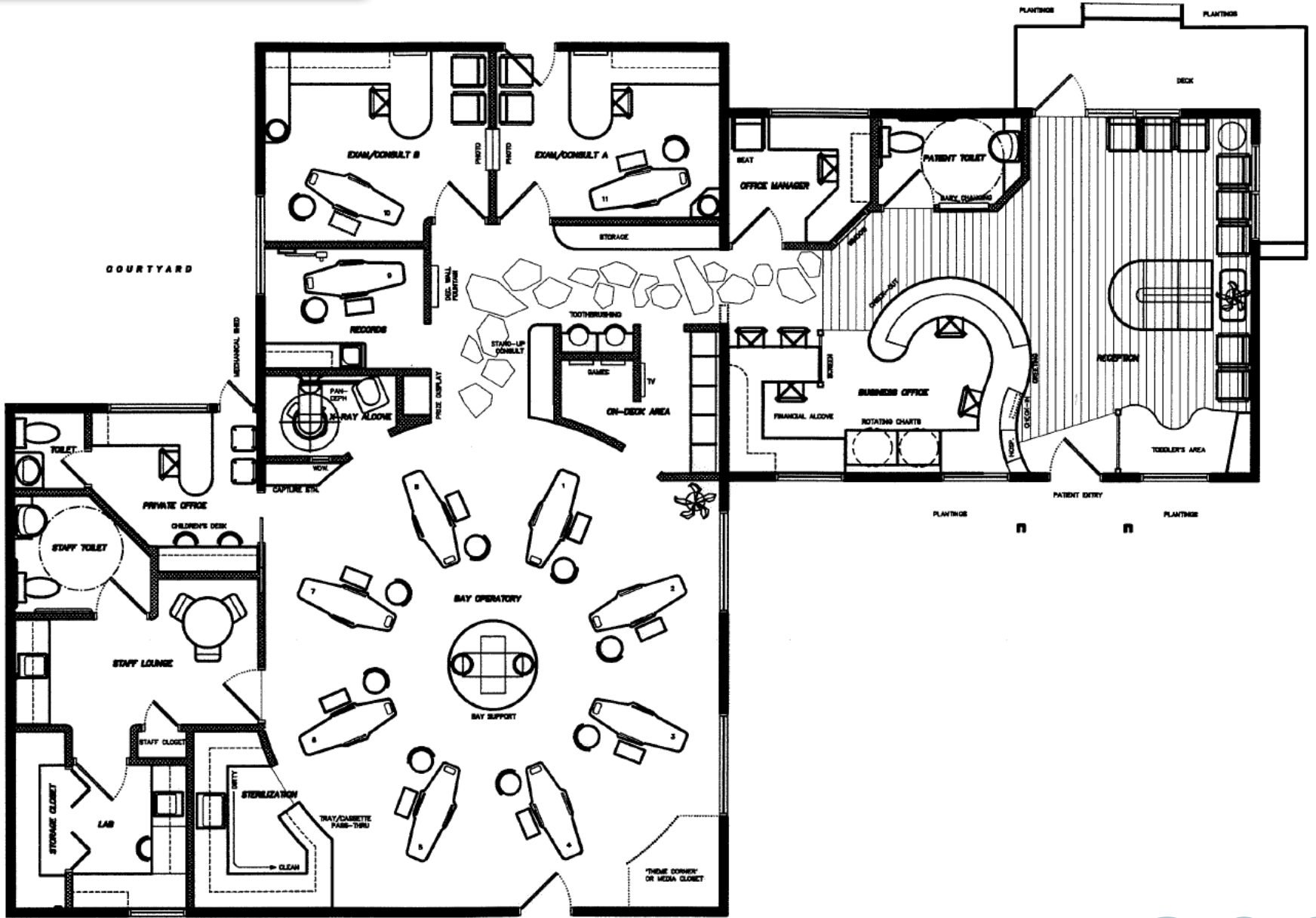
Contact Brokers for pricing

4200
EAST AVENUE



SUITE 100 - VIRTUAL TOUR

FLOOR PLAN AND VIRTUAL TOUR



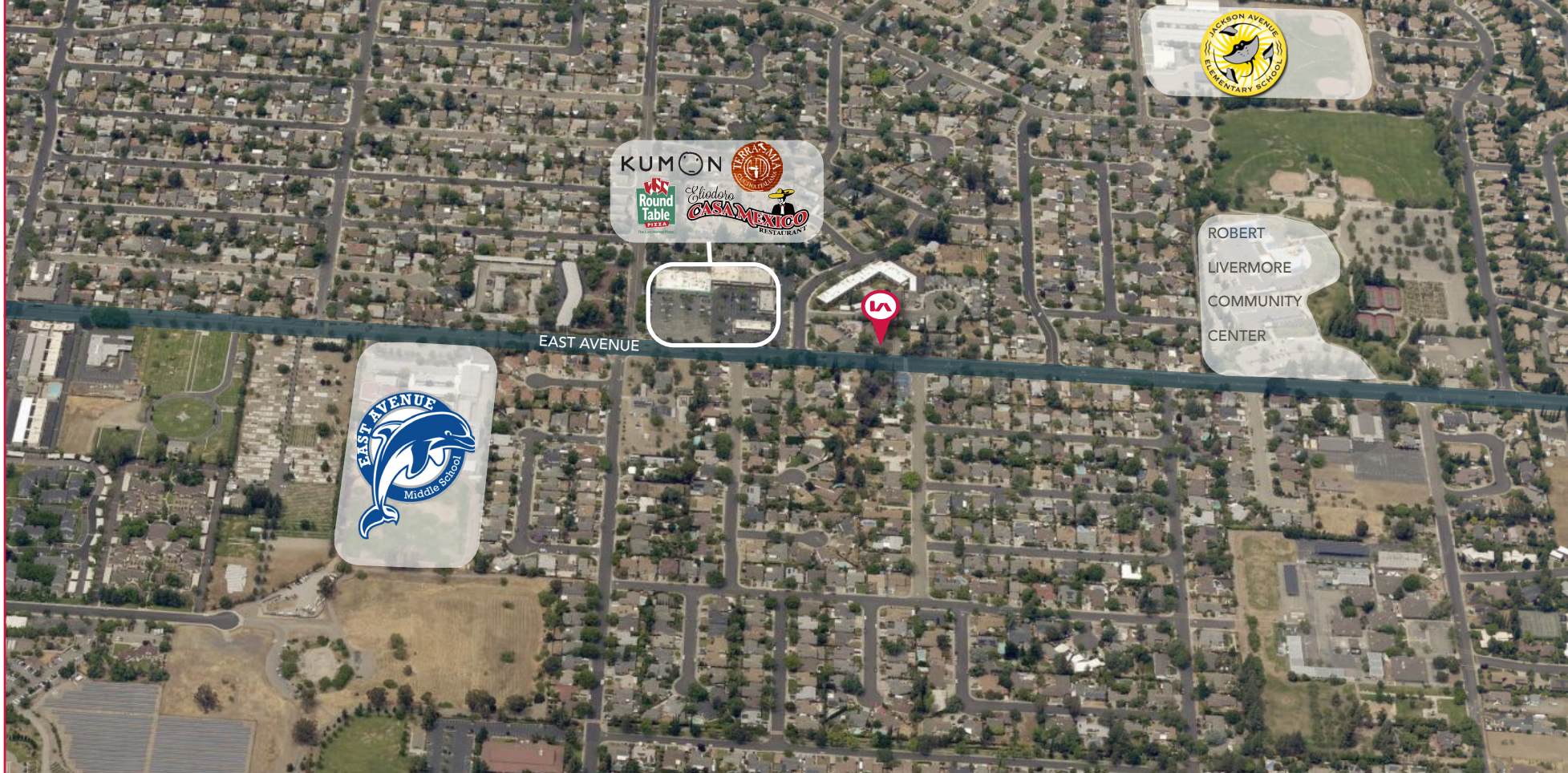
4200 EAST AVENUE



GALLERY

4200
EAST AVENUE

DEMOGRAPHICS



ROBUST POPULATION

87,496



NUMBER OF HOUSEHOLDS

31,079



APPROX. AVERAGE HH INCOME

\$161,232



MEDIAN AGE

41.0



4 YEAR DEGREE OR HIGHER

52.7%

DEMOGRAPHICS

	1 MILE	3 MILE	5 MILE
MEDIAN HH INCOME	\$155,845	\$156,496	\$164,706
POPULATION	14,972	75,413	91,729
TOTAL HOUSEHOLDS	5,986	28,618	34,274
MEDIAN AGE	44.7	41.1	41.2

FOR LEASE

2,554±SF DENTAL SPACE AVAILABLE

4200 EAST AVENUE | LIVERMORE, CA 94550



Jessica Mauser

Managing Principal
jmauser@lee-associates.com
925-737-4168
LIC NO 01728720



Mark Rinkle

Principal
mrinkle@lee-associates.com
925-737-4145
LIC NO 01512632