

FEATURES

- Secured Yard
7,000 SF +/-
- Office 200 SF +/-
- Restroom
- Shop 400 SF +/-
- Heavy daytime traffic

Asking Price:
\$ 2,500 MG

PRESENTED BY

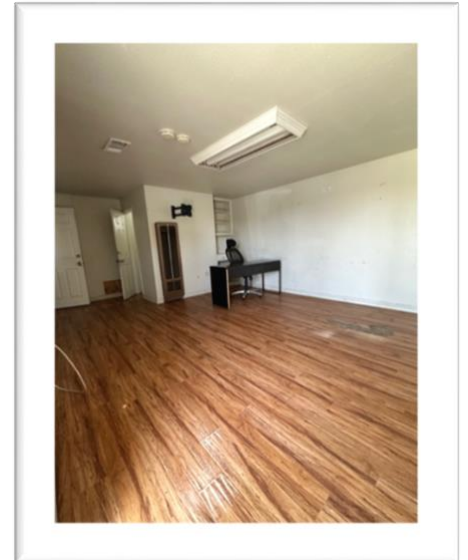
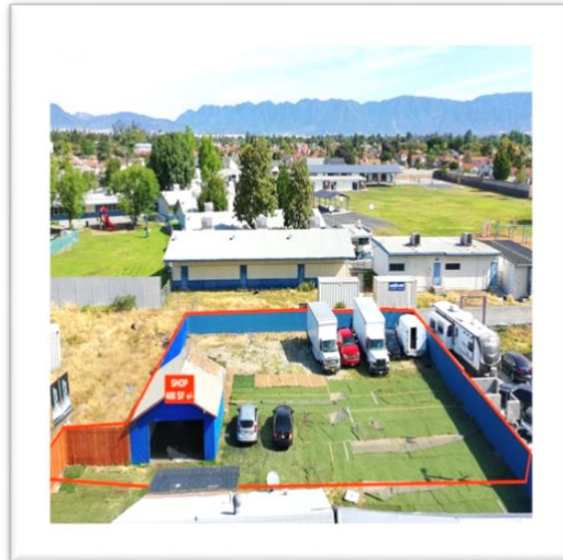
Socorro Quinones
Commercial Associate
(909) 434-2669
DRE Lic #01989999
Squinones3@mgrrealestate.com

Raul Alejos
Senior Commercial Associate
(909)556-3203
DRE Lic #01488335
Ralejos@mgrrealestate.com

19154 Valley Blvd, Bloomington, 92316

Property Description:

Prime Location, High Visibility and easy access for customers, unlock the potential of your business with this exceptional 7,000 SF Light Industrial- Retail yard, with 200 SF Office and Restroom, and a 400 SF +/- Shop, ideal for Store Cars, Window Tinting, Auto Stereo installation, and other similar uses.



COMMERCIAL | RESIDENTIAL | PROPERTY MANAGEMENT

ONTARIO COSTA MESA VICTORVILLE RANCHO MIRAGE CARLSBAD IRVINE

(800) 777-7647 mgrrealestate.com DRE #01841921

