



Wembley Commercial Centre, East Lane, Harrow

Middlesex, HA9 7UR

Light Industrial / Warehouse Units - To Let

284 to 2,767 sq ft
(26.38 to 257.06 sq m)

- 24-hour access
- Estate parking
- Open plan layout
- New units built to a high standard
- Shutter access
- 3 phase power
- Concrete floor

Wembley Commercial Centre, East Lane, Harrow, Middlesex, HA9 7UR

Summary

Available Size	284 to 2,767 sq ft
Rent	£14,388 - £49,812 per annum
Business Rates	Business rates differ for each unit, to find out more please get in touch.
Service Charge	£0.75 per sq ft
VAT	Applicable
Legal Fees	Each party to bear their own costs
EPC Rating	Upon enquiry

Description

Wembley Commercial Estate has a wide range of multi-purpose units to offer ranging in size and price. Access is provided via a loading shutter doors.

The units have just been refurbished and are open planned located within a secure estate.

There is also a public car park on the estate for visitors.

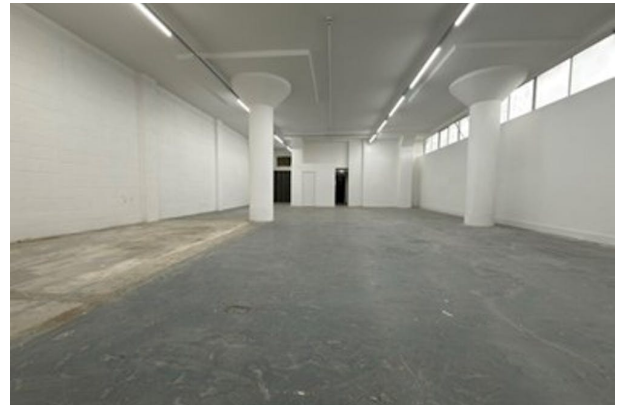
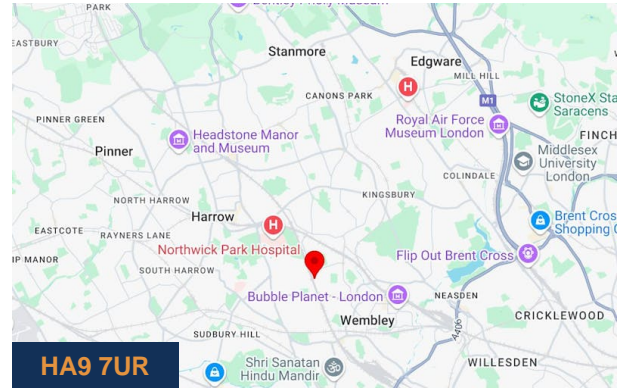
Location

Wembley Commercial Estate is located just a 5-minute walk from North Wembley Station and is well connected via the National Rail, Overground and Underground services. By car, the M25 and M1 are also easily accessible.

The area also benefits from its nearby retailers, outlook stores, Wembley stadium and its vast selection of restaurants and bars.

Accommodation

Name	sq ft	sq m	Rent	Availability
Unit - 2.9 Building A	284	26.38	£7,392 /annum	Available
Unit - 2F Building B	620	57.60	£13,640 /annum	Available
Unit - LG3A Building A	1,291	119.94	£24,540 /annum	Available
Unit - 3.13 Building A	1,940	180.23	£29,100 /annum	Under Offer
Unit - 2.1 Building A	1,975	183.48	£29,616 /annum	Available
Unit - LG2 Building A	2,162	200.86	£32,430 /annum	Available
Unit - 4.3 Building A	2,280	211.82	£34,200 /annum	Available
Unit - G3 Building A	2,691	250	£48,444 /annum	Available
Unit - G6 Building A	2,766	256.97	£49,788 /annum	Available
Unit - G2 Building A	2,767	257.06	£49,812 /annum	Available
Unit - 3E Building B	1,411	131.09	£26,820 /annum	Withdrawn
Unit - 3.12 Building A	1,120	104.05	£22,404 /annum	Withdrawn
Total	21,307	1,979.48		



Viewing & Further Information



Finlay Milnes

020 8429 9009 | 07522 700 508

finlay@davidcharles.co.uk

The above information contained within this email is sent subject to contract. These particulars are for general information only and do not constitute any part of an offer or contract. All statements contained therein are made without responsibility on the part of the vendors or lessors and are not to be relied upon as statement or representation of fact. Intending purchasers or lessees must satisfy themselves, by inspection, or otherwise, as to the correctness of each of the statements of dimensions contained in these particulars. Generated on 18/12/2025