

# LEGACY CORPORATE CENTER

## OFFICE SUITES FOR LEASE

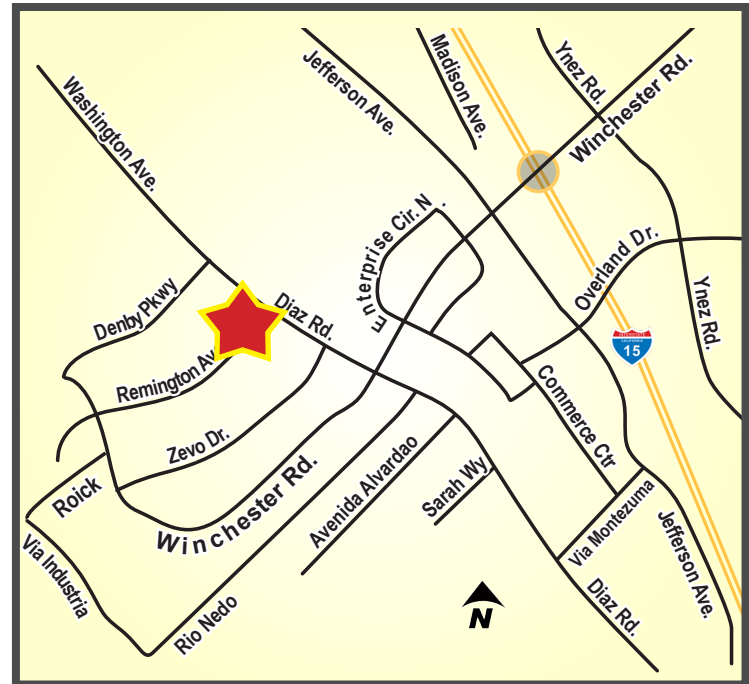
41951 REMINGTON AVENUE - TEMECULA, CA

**EARN FULL COMMISSION!**  
FOR LEASES SIGNED WITH  
A 3 YEAR MIN. TERM  
BY 10/31/25



### PROPERTY HIGHLIGHTS:

- 32,000 SF Class "A" Office Building
- 1,506 SF - 2,923 SF Suites Available
- Class A Building Standards
- Elevator Served
- Coffee Bars in Each Suite
- Flexible Lease Terms
- Lush Landscaping
- Easy Access to Interstate 15
- 4:1,000 SF Parking
- From \$1.59 PSF!



**JIM NADAL, ccim • 951.445.4520 • jnadal@leetemecula.com • DRE #01040679**

# LEGACY CORPORATE CENTER

## OFFICE SUITES FOR LEASE

41951 REMINGTON AVENUE - TEMECULA, CA

### SUITE AVAILABILITY

#### FIRST FLOOR

SUITE	± SIZE	MONTHLY LEASE RATE	COMMENTS
100	2,140	\$3,724 / MONTH (\$1.74 / PSF / MONTH)	Highly Desirable Corner Office Off Building Lobby With Double Door Entry. Contact Agent To Tour.
130	1,660	\$2,805 / MONTH (\$1.69 / PSF / MONTH)	2 Private Offices, Open Work Area and Storage

#### SECOND FLOOR

SUITE	± SIZE	MONTHLY LEASE RATE	COMMENTS
220	2,923	\$4,794 / MONTH (\$1.64 / PSF / MONTH)	Corner Location, 5 Private Offices, Open Work Area, Coffee Bar and Storage
250	1,506	\$2,395 / MONTH (\$1.59 / PSF / MONTH)	Corner Location, 2 Private Offices, Open Work Area, Coffee Bar and Storage

Rev. 07/18/2025

- 5% Annual Increases.
- Rates based on a minimum 3-year term.
- 20% premium for 2-year terms.

All rental rates are quoted based upon a Modified Gross Lease form.

Rental rates are subject to change at the Owner's sole discretion.

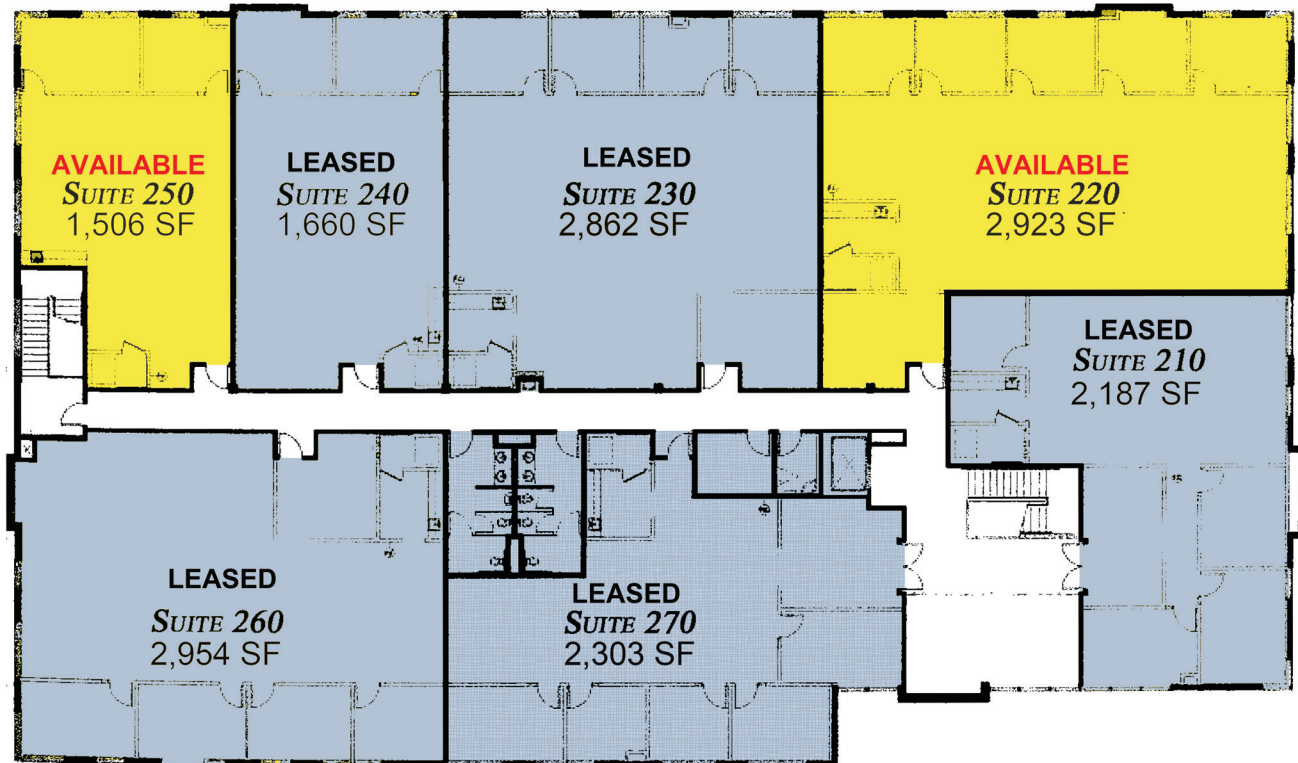
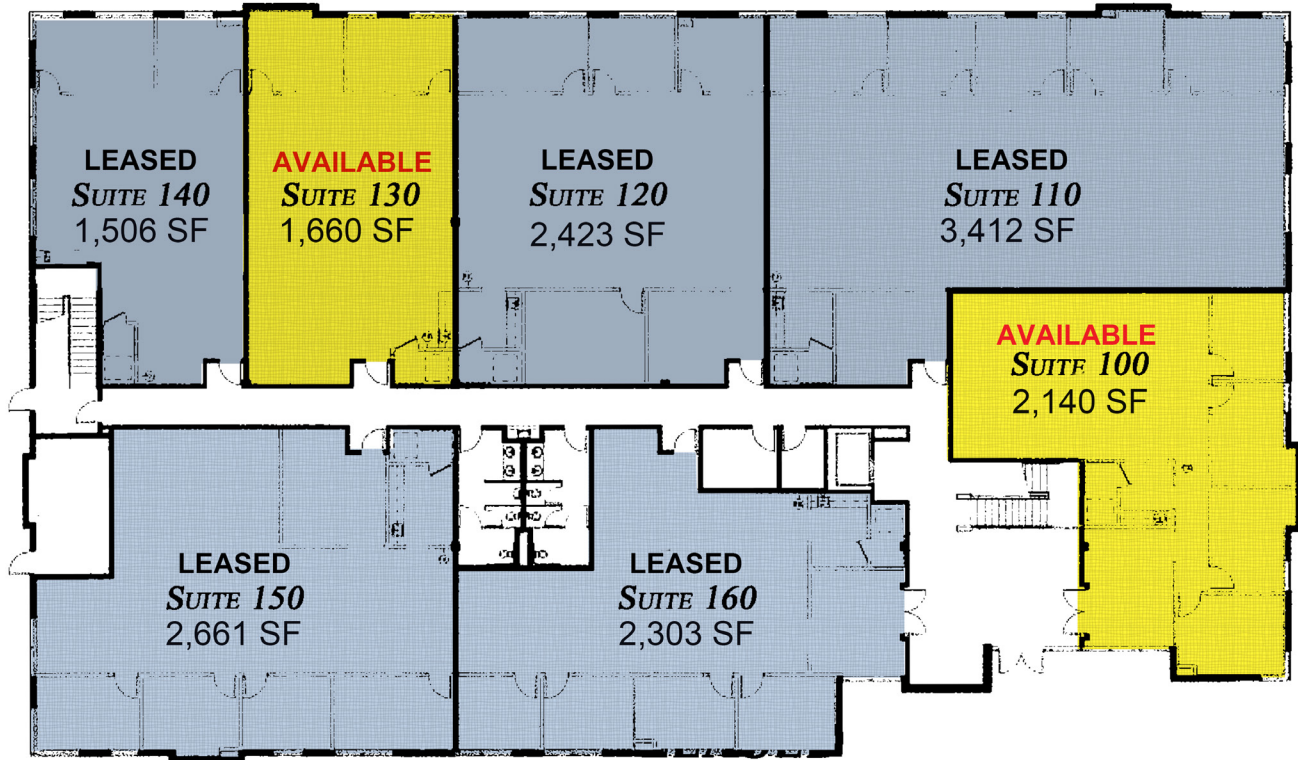


**JIM NADAL, ccim • 951.445.4520 • jnadal@leetemecula.com • DRE #01040679**

# LEGACY CORPORATE CENTER

## OFFICE SUITES FOR LEASE

41951 REMINGTON AVENUE - TEMECULA, CA



JIM NADAL, ccim • 951.445.4520 • jnadal@leetemecula.com • DRE #01040679

No warranty or representation has been made to the accuracy of the foregoing information. Terms of sale or lease and availability are subject to change or withdrawal without notice.

Lee & Associates Commercial Real Estate Services, Inc. - Riverside. 25240 Hancock Avenue, Suite 100 - Murrieta, CA 92562 | Corporate ID# 01048055