

industrial/flex
for
LEASE

2,500 sf

\$16.95/sf nnn

- + **primary:** industrial
- + **bulding:** 25,000 sf
- + **land:** 1.88 ac
- + **zoning:** i-3 i-5
- + **built:** 1986
- + **parking:** 55 spaces

7006 stapoint ct
suite h
orlando, florida 32806



patrick goetz
vice president
(407) 734.7210
pat@BBDRE.com



Bishop Beale Duncan
COMMERCIAL REAL ESTATE



highlights

located off
stapoint ct near
forsythe and
semoran blvd

- great location
- ideal size
- includes a large work area under air conditioning
- 9 x 12 ground-level bay door



250 N. Orange Ave., Ste. 1500
Orlando, FL 32801
+ (407) 426.7702
www.BBDRE.com

This offer is subject to errors, omissions, prior sale or withdrawal without notice.



for more information, contact patrick goetz vice president (407) 734.7210 pat@BBDRE.com

location aerial



aerial
n

stapoint

forsythe ave
the property



for more information, contact patrick goetz vice president (407) 734.7210 pat@BBDRE.com

unit h front elevation

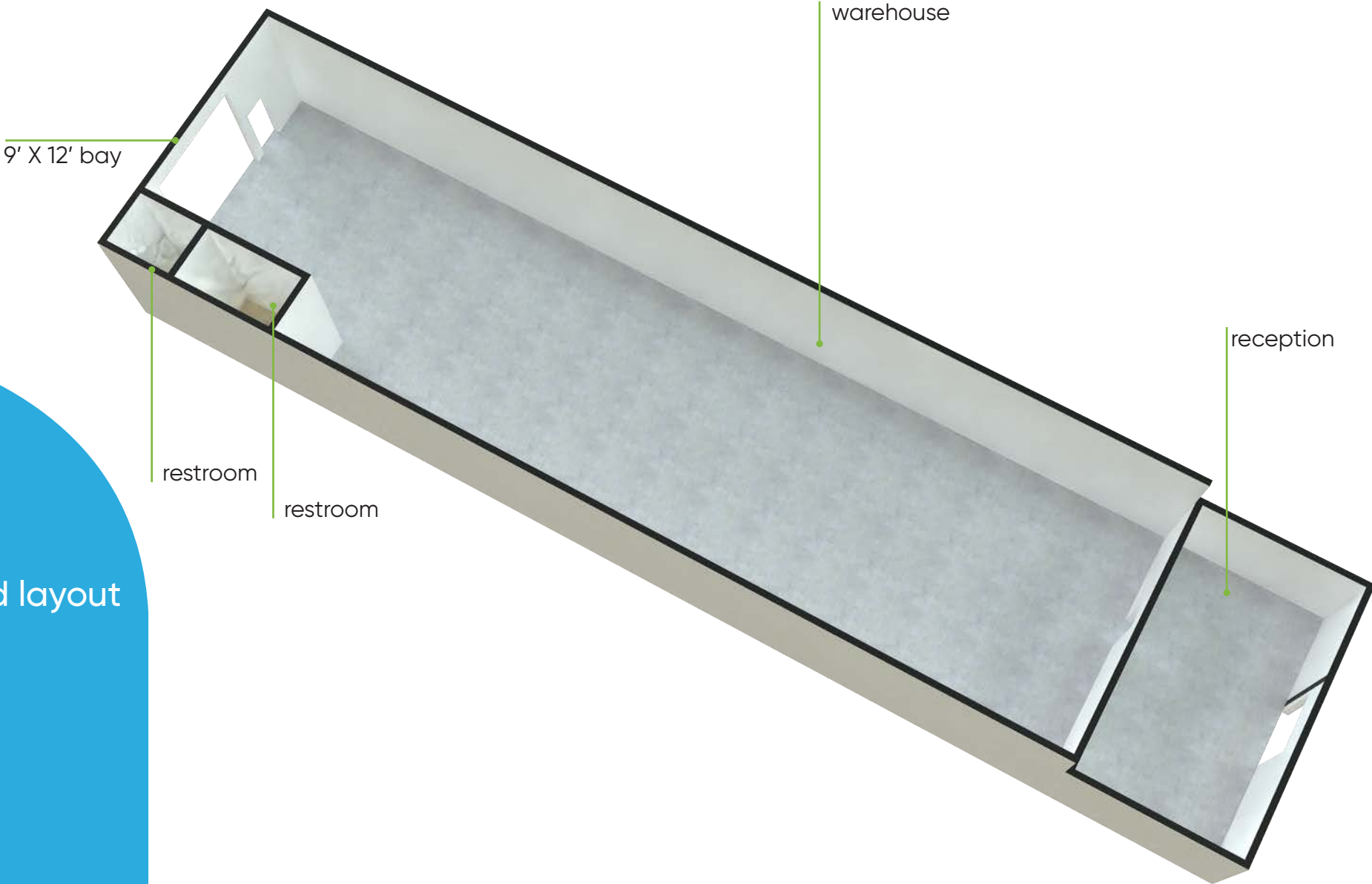


unit h
2,500 SF

exterior

for more information, contact patrick goetz vice president (407) 734.7210 pat@BBDRE.com

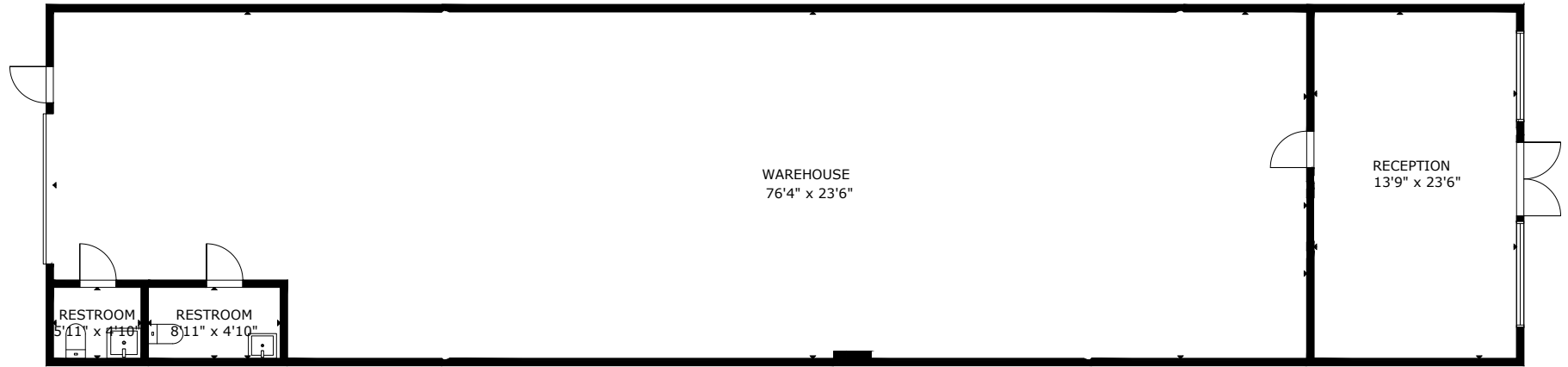
unit h | 2,500 sf



3d layout



unit h | 2,500 sf



floor plan

FLOOR 1



for more information, contact patrick goetz vice president (407) 734.7210 pat@BBDRE.com

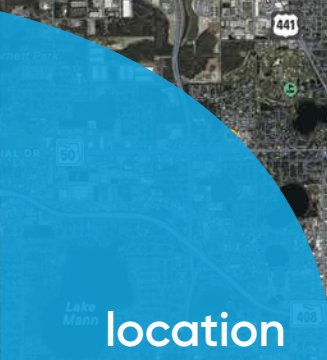
unit h back elevation



unit h
2,500 SF

exterior

for more information, contact patrick goetz vice president (407) 734.7210 pat@BBDRE.com



location
map



demographics

Radius	Population	HH Income	Businesses	Employees
1-Mile	13,376	\$69,951	1,120	10,572
2-Mile	49,937	\$80,827	3,831	27,991
3-Mile	107,846	\$90,257	6,290	44,009



for more information, contact patrick goetz vice president (407) 734.7210 pat@BBDRE.com