

Allied

PROPERTY GROUP

PRIME RETAIL FOR LEASE

181 Greenwich Ave, Greenwich CT



- Building:** 6,250+/- SF 1st Floor On grade
6,250 +/- SF 1st Floor On grade Rear
12,500 +/- SF Total Will divide
- Frontage:** 35 +/- Feet
- Price:** \$75 PSF NNN Blended Rate
- Parking:** Rear Access off the largest municipal parking lot in Downtown Greenwich 120 cars.
- Elevator:** Services both floors
- Comments:** Premier location on one of the best High Street Locations in the country. Same block tenants include, Tiffany's, J. Crew, Vineyard Vine, Lululemon, Zara, Saks Fifth Ave., AERIE, Beyond Yoga and others.

Exclusive Agent
Allied Property Group
Tom Torelli

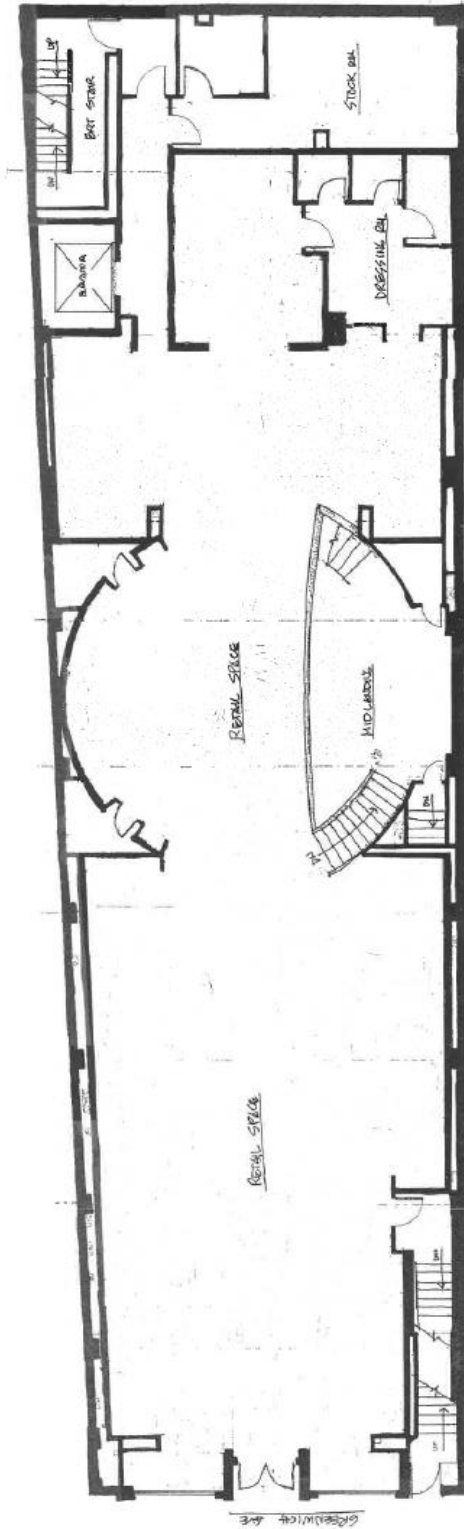
203-661-5800 Ext. 1

tom@alliedpropertygp.com

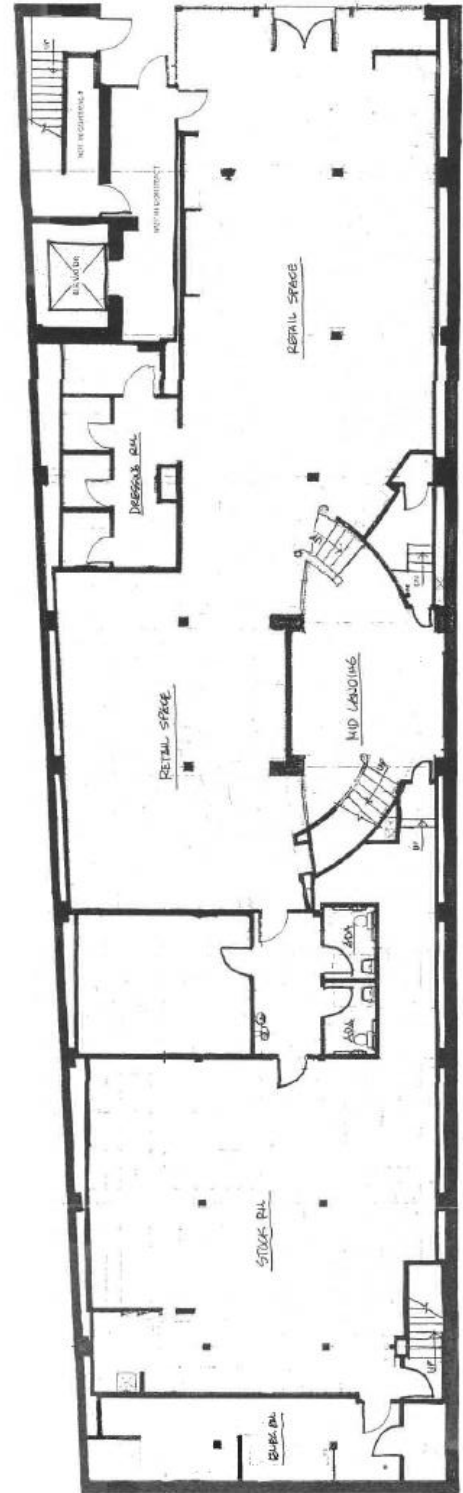
Listed subject to errors, omissions change of price and withdrawal without notice.

Allied

PROPERTY GROUP



UPPER LEVEL FLOOR PLAN



LOWER LEVEL FLOOR PLAN

GREENWICH AVENUE

Exclusive Agent
Allied Property Group
Tom Torelli
203-661-5800 Ext. 1
tom@alliedpropertygp.com

Allied

PROPERTY GROUP

