

# FOR LEASE



INLAND  
EMPIRE

## ±3,200 SQ.FT. INDUSTRIAL UNIT

2610 S. RIVERSIDE AVE., BLOOMINGTON, CA 92316



### PROPERTY FEATURES

**Unit Size:** ± 3,200 Sq.Ft

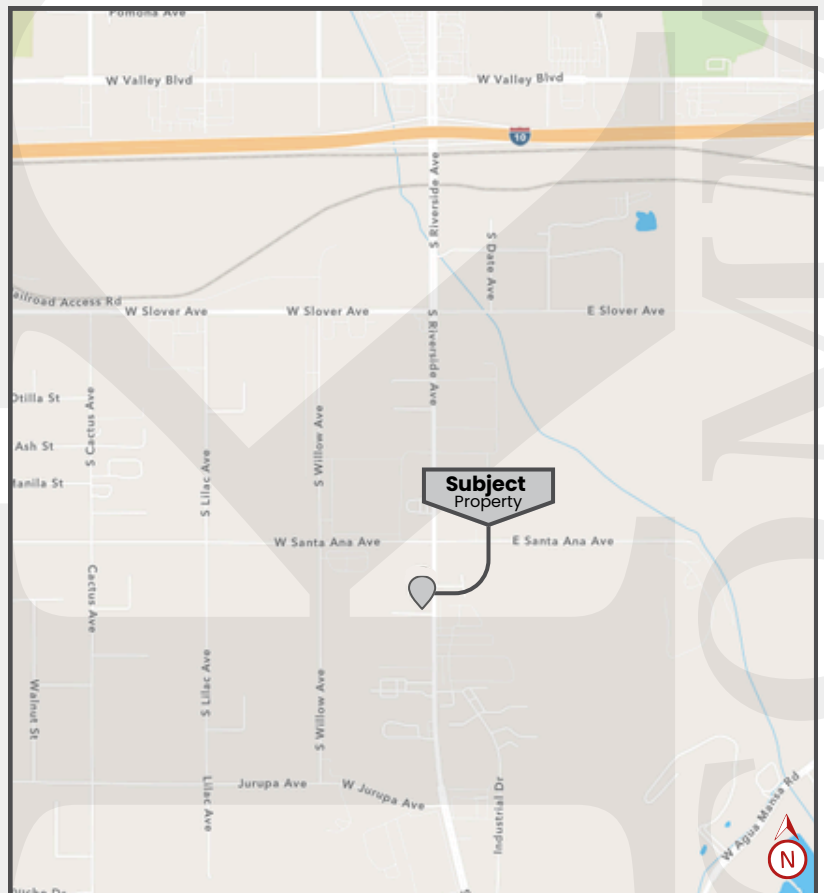
**Lot Size:** ± 20,570 Sq.Ft. (± 0.47 Acres)

**APN:** 0258-121-38-0000

**Zoning:** Agua Mansa Specific Plan (SP)  
per the County of San Bernardino, CA

### PROPERTY HIGHLIGHTS

- ±200 sq.ft. Office Space
- 1 Ground Level Door (14' x 10')
- 15' Clear Height
- 2 Restrooms
- Secured Parking
- Frontage on S. Riverside Ave.  
(±24,000 VPD)
- Great Access to I-10 Freeway  
from S. Riverside Ave. On/Off  
Ramp



**FOR LEASE**

**±3,200 SQ.FT. INDUSTRIAL UNIT**

**2610 S. RIVERSIDE AVE., BLOOMINGTON, CA 92316**



**INLAND  
EMPIRE**

**ADDITIONAL PICTURES**



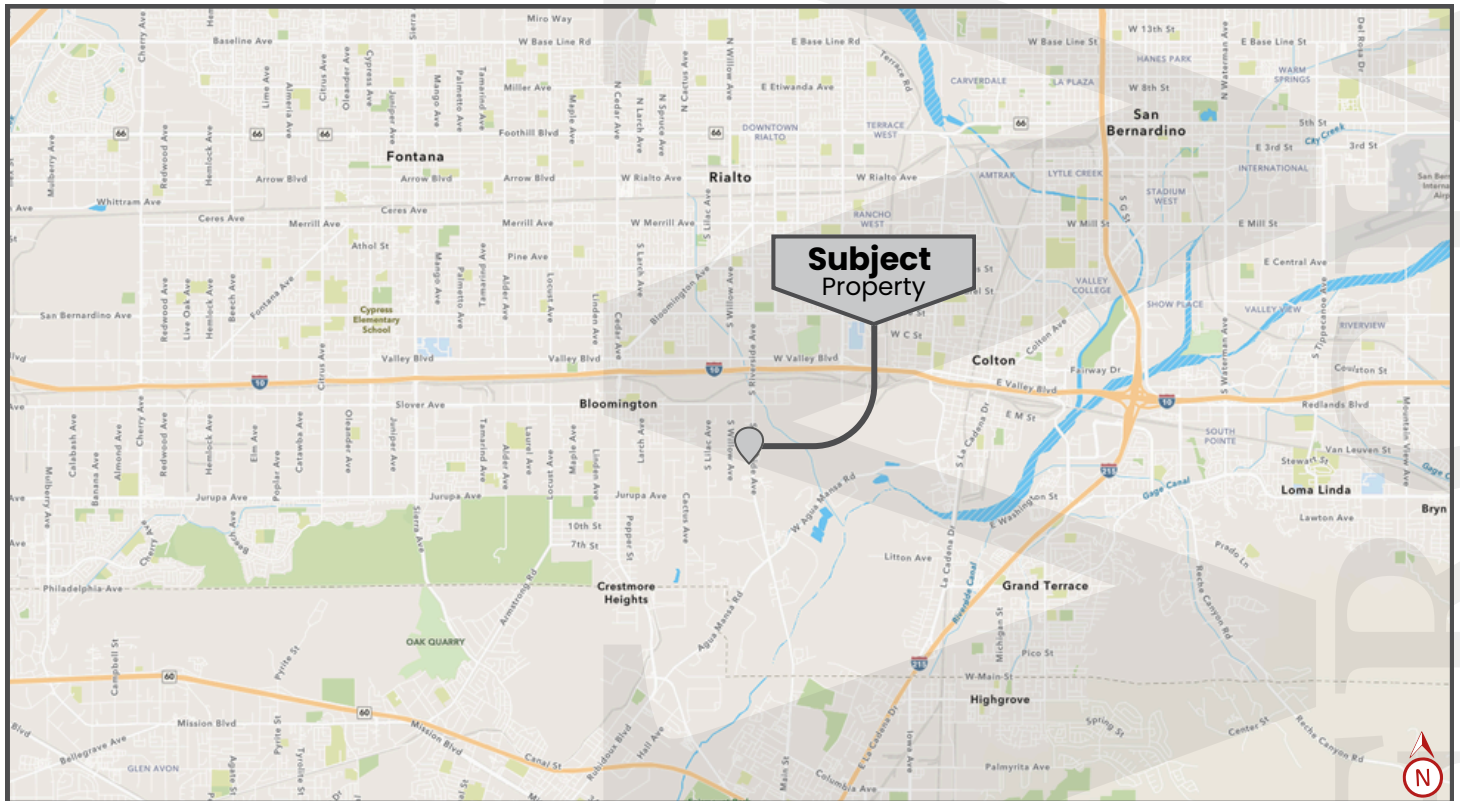
**FOR LEASE**

**±3,200 SQ.FT. INDUSTRIAL UNIT**

**2610 S. RIVERSIDE AVE., BLOOMINGTON, CA 92316**



**INLAND  
EMPIRE**



**Rene Ramos, Jr.**  
T(909) 980-6868  
Rene.Ramos@kwcommercial.com  
CaDRE Lic. #01836872

**Jacob B. Bernardy**  
T(909) 935-0935  
Jacob.Bernardy@kwcommercial.com  
CaDRE Lic. #02039512

**Robert D. Bagley III**  
T(909) 935-0938  
robert.bagley@kwcommercial.com  
CaDRE Lic. #02131874

**Daniel W. Richards**  
T(909) 243-7747 x 22  
Daniel.Richards@kwcommercial.com  
CaDRE Lic. #00803221



*WE OBTAINED THE INFORMATION ABOVE FROM SOURCES WE BELIEVE TO BE RELIABLE. HOWEVER, WE HAVE NOT VERIFIED ITS ACCURACY AND MAKE NO GUARANTEE, WARRANTY, OR REPRESENTATION ABOUT IT. IT IS SUBMITTED SUBJECT TO THE POSSIBILITY OF ERRORS, OMISSIONS, CHANGE OF PRICE, RENTAL OR OTHER CONDITIONS, PRIOR SALE, LEASE OR FINANCING, OR WITHDRAWAL WITHOUT NOTICE. WE INCLUDE PROJECTIONS, OPINIONS, ASSUMPTIONS OR ESTIMATES FOR EXAMPLE ONLY, AND THEY MAY NOT REPRESENT CURRENT OR FUTURE PERFORMANCE OF THE PROPERTY. YOU AND YOUR TAX AND LEGAL ADVISORS SHOULD CONDUCT YOUR OWN INVESTIGATION OF THE PROPERTY AND TRANSACTION.*

**KW COMMERCIAL- INLAND EMPIRE**

3595-1 Inland Empire Blvd.

Suite 1250

Ontario, CA 91764

**909.980.6868**

www.kwcie.com