

BANNEKER BUILDING

5840 Banneker Road, Columbia, Maryland
Howard County



 **SUITE 200**
Click To View
Property Suite

 **SUITE 230**
Click To View
Property Suite

AVAILABLE SUITES

- **Suite 200:** 2,582 SF
- **Suite 220:** 1,295 SF
- **Suite 230:** 3,605 SF

- Conveniently located near Downtown Columbia
- Easy access to I-95, Route 29, and Route 32
- Blocks away from Columbia Mall, Howard Community College and Howard County General Hospital
- Great window lines
- Flexible lease terms
- Free surface parking

NEARBY AMENITIES



Abby Glassberg
aglassberg@klnb.com
443-574-1422

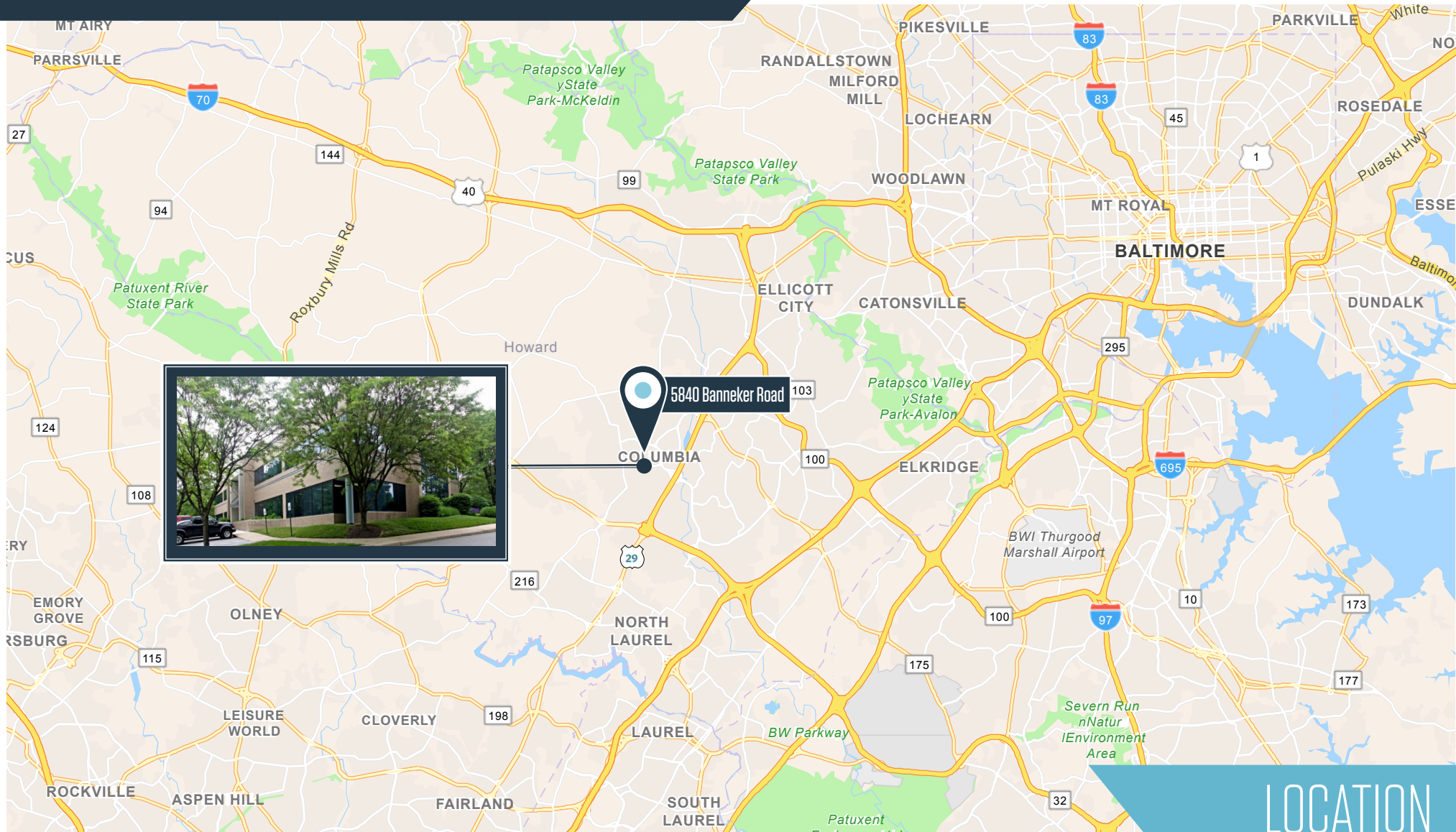
Austin Eber
aeber@klnb.com
443-574-1414

9881 Broken Land Pkwy, #300
Columbia, MD 21043
klnb.com



BANNEKER BUILDING

5840 Banneker Road, Columbia, Maryland
Howard County



Abby Glassberg
aglassberg@klnb.com
443-574-1422

Austin Eber
aeber@klnb.com
443-574-1414

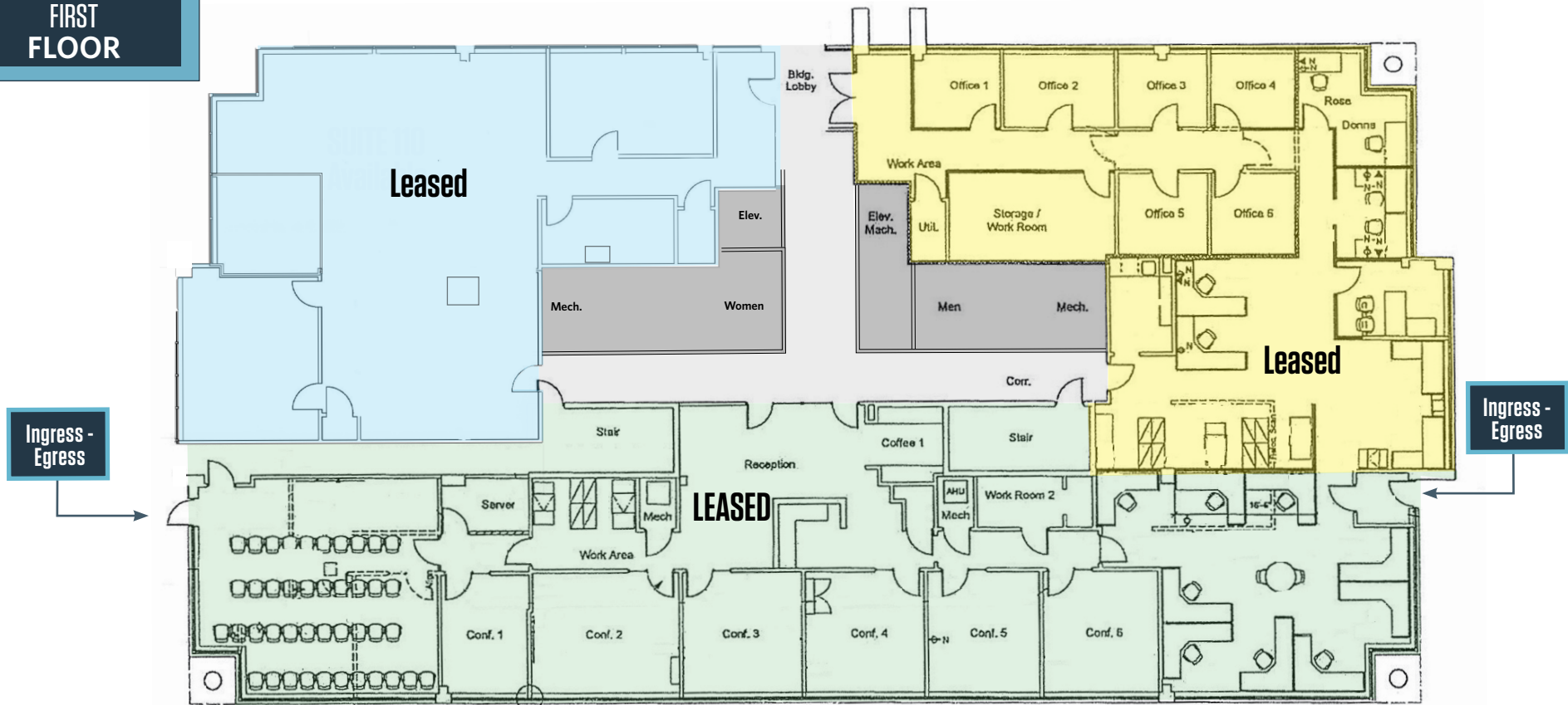
9881 Broken Land Pkwy, #300
Columbia, MD 21043
klnb.com

NAklnb

BANNEKER BUILDING

5840 Banneker Road, Columbia, Maryland
Howard County

FIRST FLOOR



FLOOR PLANS

Abby Glassberg
aglassberg@klnb.com
443-574-1422

Austin Eber
aeber@klnb.com
443-574-1414

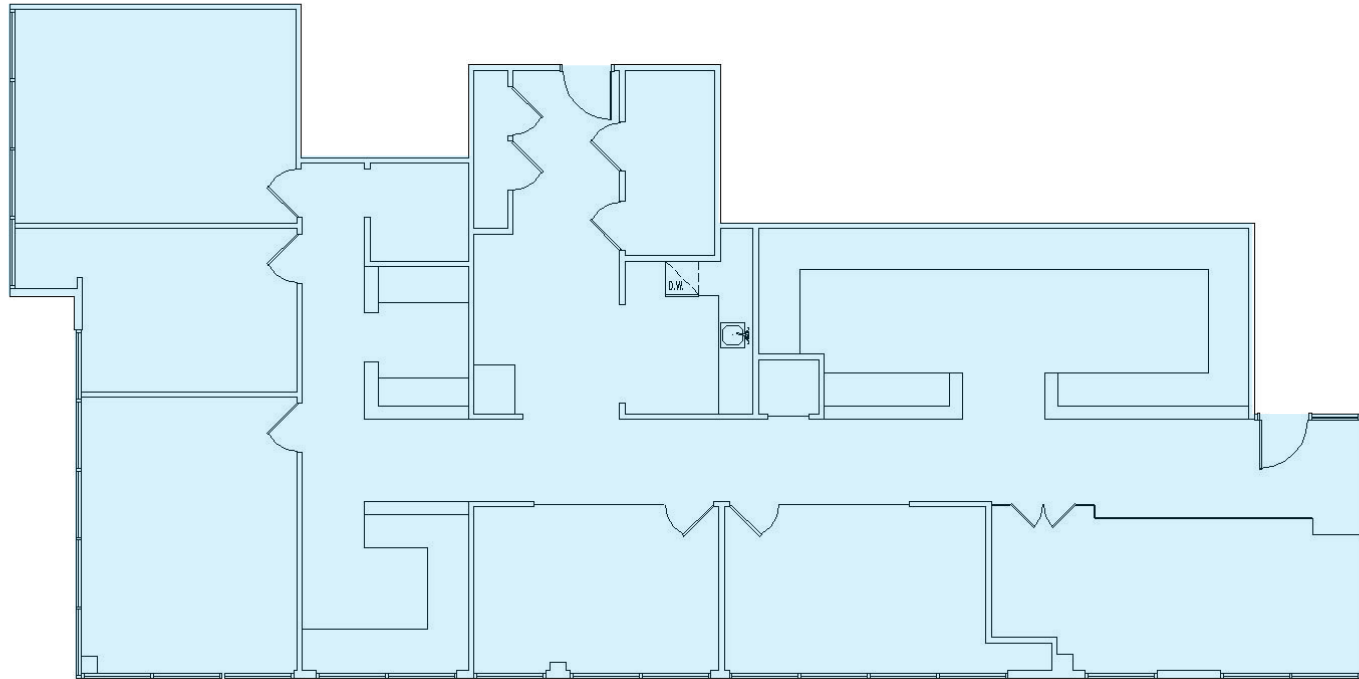
9881 Broken Land Pkwy, #300
Columbia, MD 21043
klnb.com



BANNEKER BUILDING

5840 Banneker Road, Columbia, Maryland
Howard County

SUITE 200
2,582 SF



FLOOR PLANS

Abby Glassberg
aglassberg@klnb.com
443-574-1422

Austin Eber
aeber@klnb.com
443-574-1414

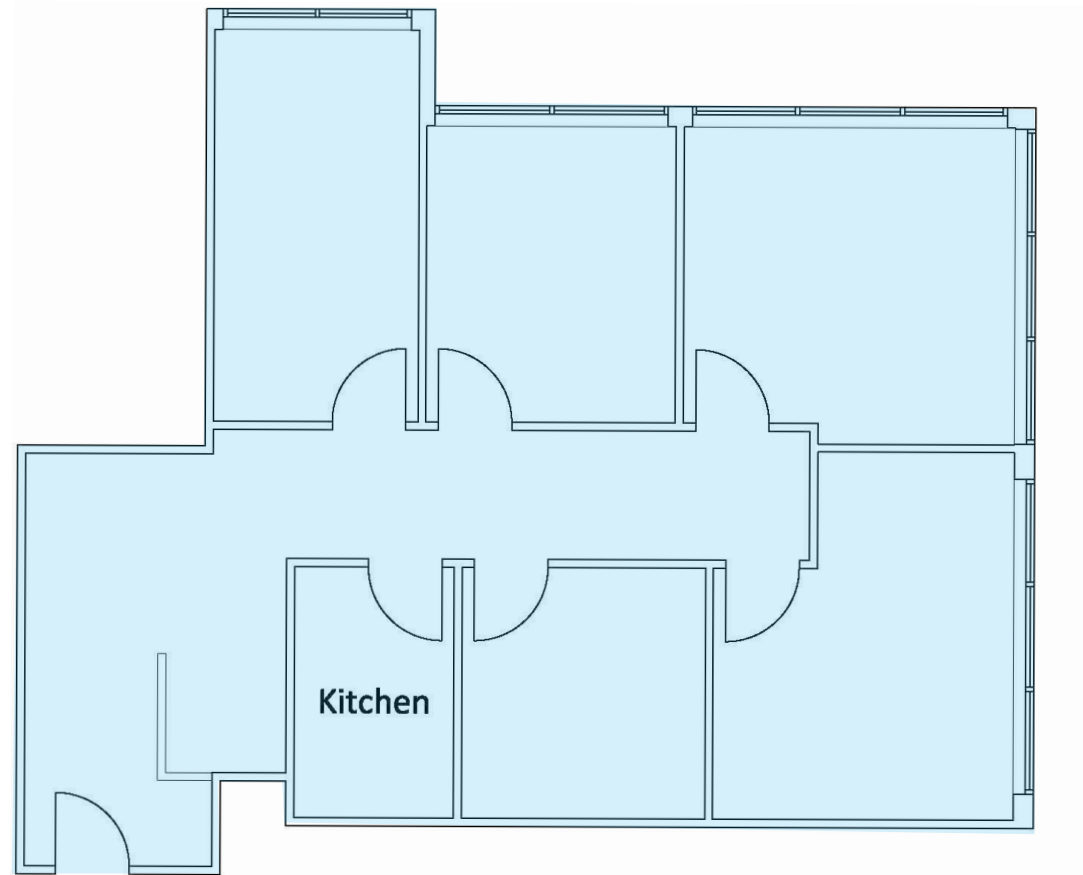
9881 Broken Land Pkwy, #300
Columbia, MD 21043
klnb.com

NAIklnb

BANNEKER BUILDING

5840 Banneker Road, Columbia, Maryland
Howard County

SUITE 220
1,295 SF



FLOOR PLANS

Abby Glassberg
aglassberg@klnb.com
443-574-1422

Austin Eber
aeber@klnb.com
443-574-1414

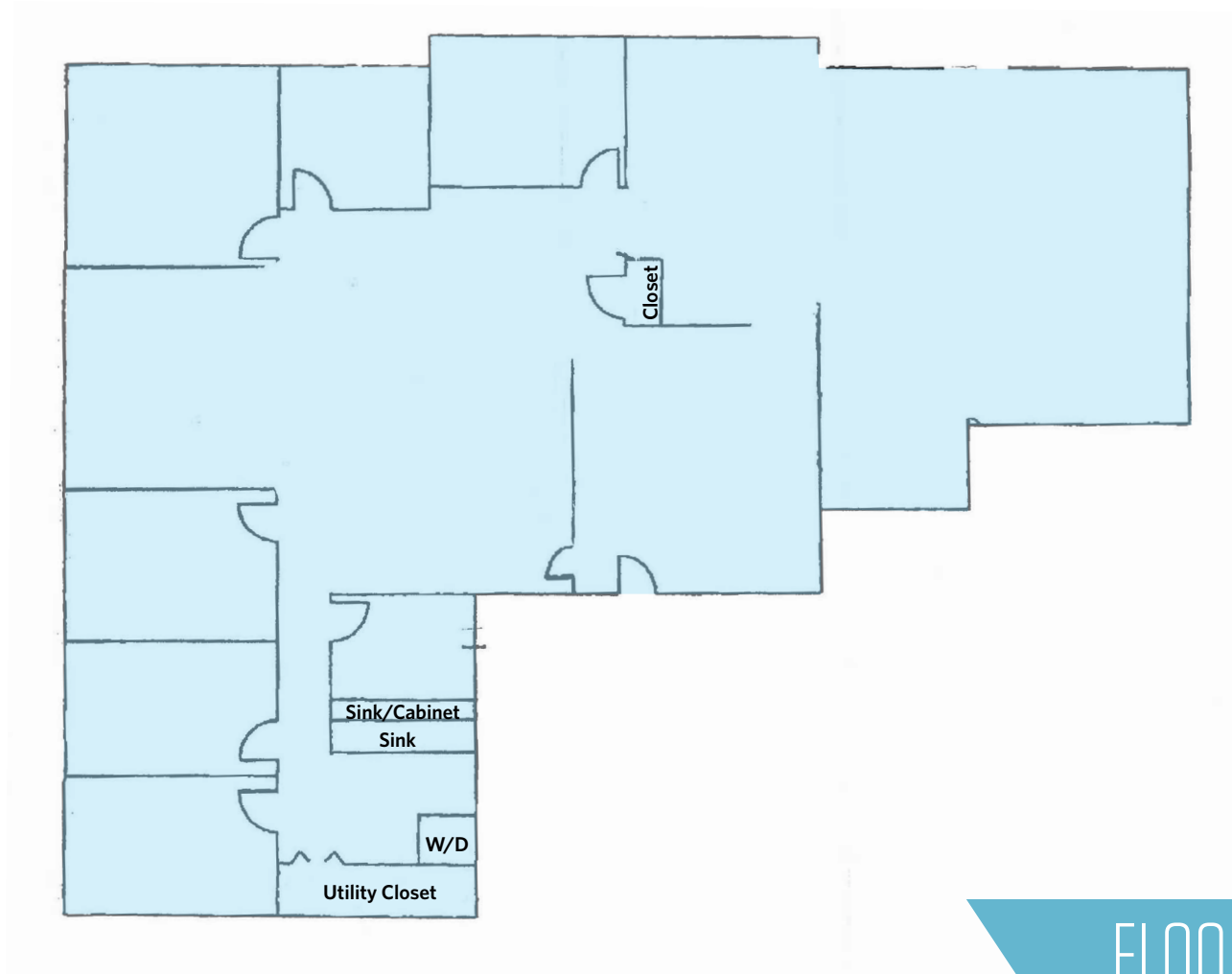
9881 Broken Land Pkwy, #300
Columbia, MD 21043
klnb.com

NAklnb

BANNEKER BUILDING

5840 Banneker Road, Columbia, Maryland
Howard County

SUITE 230
3,605 SF



FLOOR PLANS

Abby Glassberg
aglassberg@klnb.com
443-574-1422

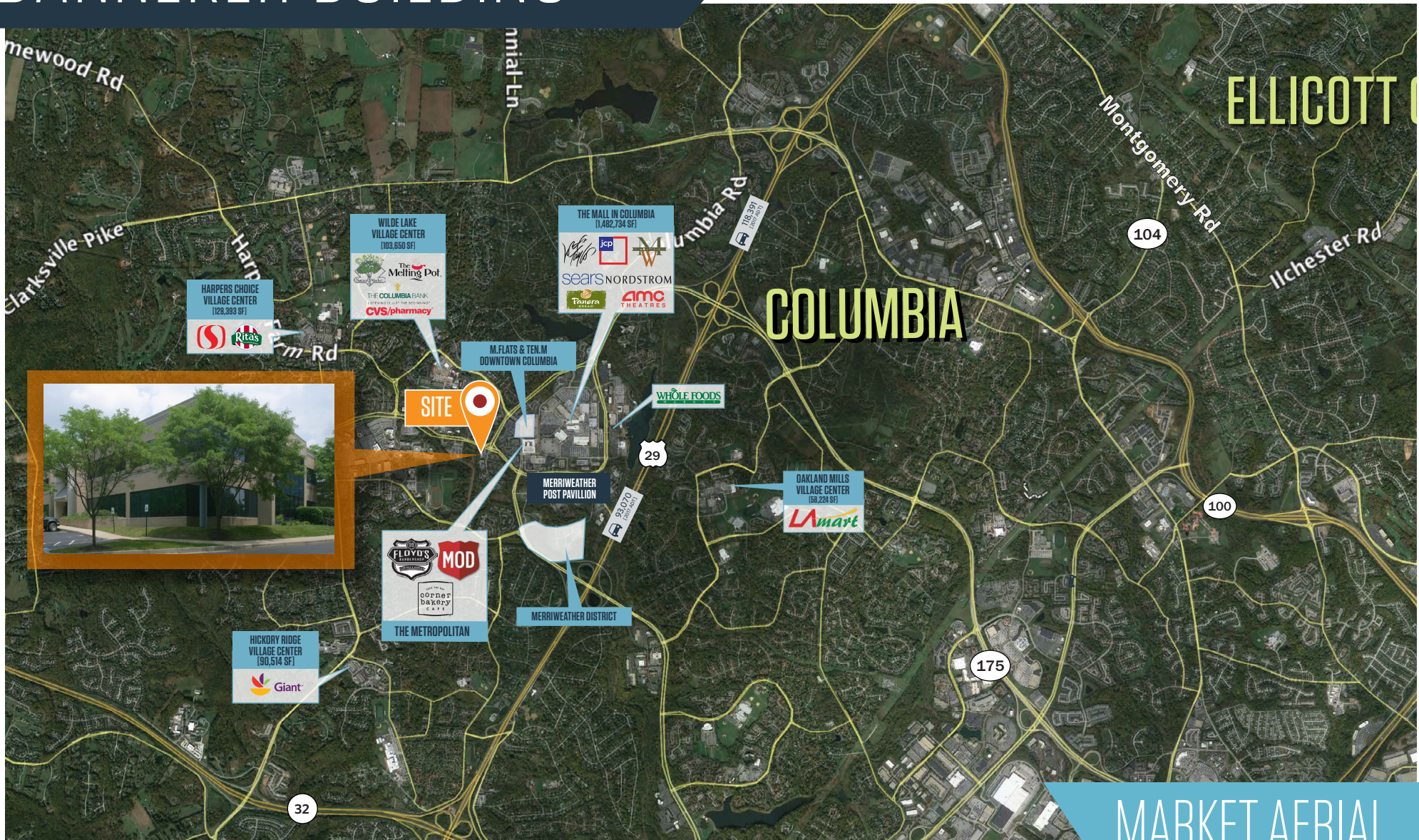
Austin Eber
aeber@klnb.com
443-574-1414

9881 Broken Land Pkwy, #300
Columbia, MD 21043
klnb.com

NAklnb

BANNEKER BUILDING

5840 Banneker Road, Columbia, Maryland
Howard County



MARKET AERIAL

Abby Glassberg
aglassberg@klnb.com
443-574-1422

Austin Eber
aeber@klnb.com
443-574-1414

9881 Broken Land Pkwy, #300
Columbia, MD 21043
klnb.com



BANNEKER BUILDING

5840 Banneker Road, Columbia, Maryland
Howard County

CLICK TO VIEW PROPERTY WEBSITE

For More Information, Please Contact:

Abby Glassberg

aglassberg@klnb.com

443-574-1433

Austin Eber

aeber@klnb.com

443-574-1414

9881 Broken Land Parkway, Suite 300
Columbia, MD 21046

klnb.com



[instagram.com/klnbcre](https://www.instagram.com/klnbcre)



[linkedin.com/company/klnb](https://www.linkedin.com/company/klnb)



[facebook.com/KLNBCRE](https://www.facebook.com/KLNBCRE)

While we have no reason to doubt the accuracy of any of the information supplied, we cannot, and do not, guarantee its accuracy. All information should be independently verified prior to a purchase or lease of the property. We are not responsible for errors, omissions, misuse, or misinterpretation of information contained herein and make no warranty of any kind, express or implied, with respect to the property or any other matters.

NAIklnb