

94-15 SUTPHIN BOULEVARD, QUEENS, NY 11435

FOR LEASE

2,300 - 3,750 SF FOURTH FLOOR OFFICE SPACES

Between 94th Avenue & 95th Avenue



SHLOMI BAGDADI
212.433.3355 x101
sb@tristatecr.com

RICHARD BABECK
212.433.3355 x119
richard.b@tristatecr.com

TRI STATE COMMERCIAL®

PROPERTY SUMMARY

LOCATION

Located in the Jamaica neighborhood of Queens.

SPACE DETAILS

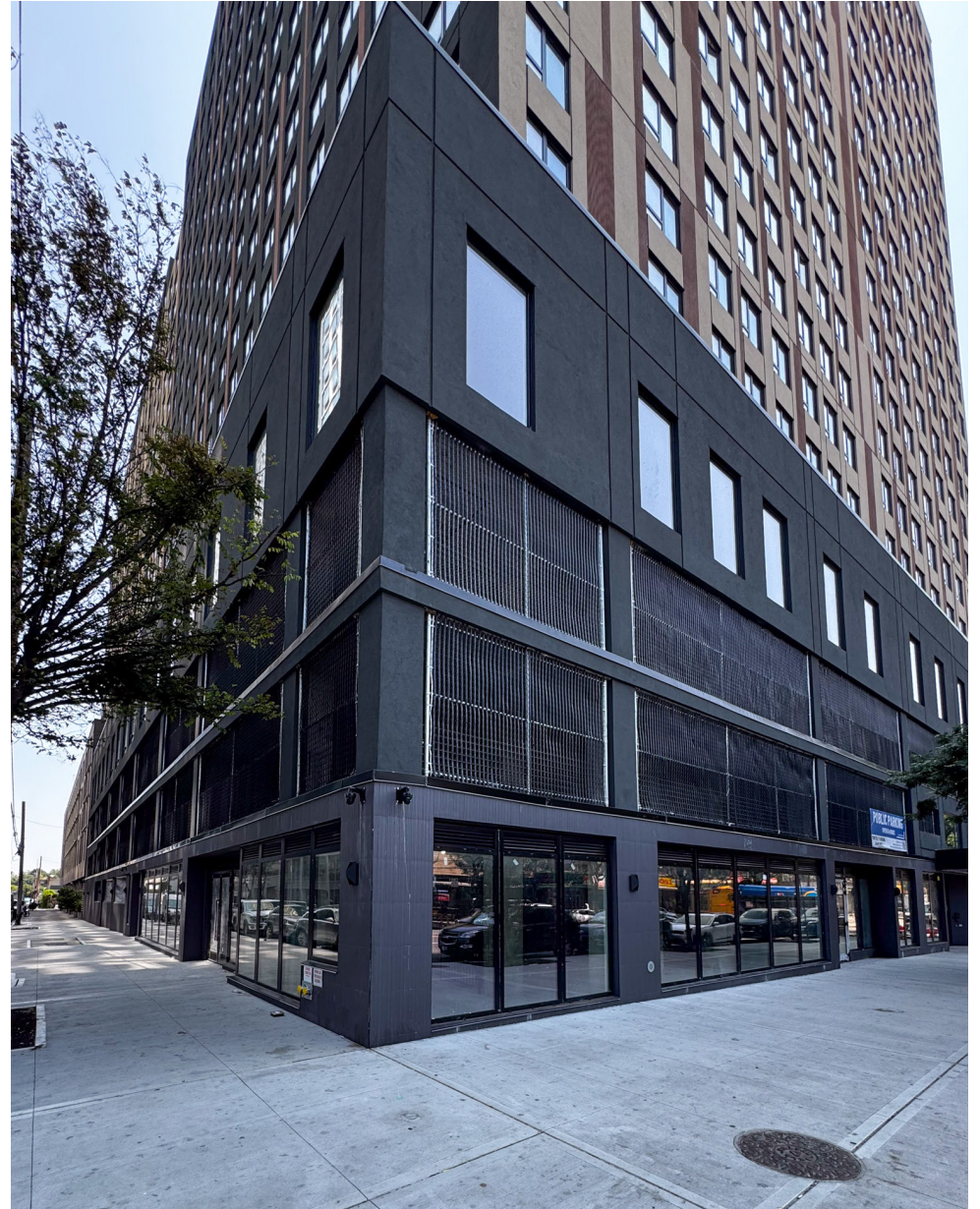
- 4th Floor Office Spaces
- Space A: 3,750 SF
- Space B: 2,300 SF

TRANSPORTATION

E J Z Trains at Sutphin Boulevard–Archer Avenue
Q25 Q65 Q44-SBS Q60 Q40 Q6 Q8 Bus Lines

NEIGHBORS

Dunkin', Chipotle Mexican Grill, Pollo Campero, Chase Bank, Bank of America, Subway, Cricket Wireless, CubeSmart Self Storage, Key Food Supermarket, Walgreens, La playita, Primark, Shake Shack, Wendy's, Old Navy, Target, Blink Fitness, Spectrum Store, O Lavrador, United States Postal Service, Tim Hortons, and more!

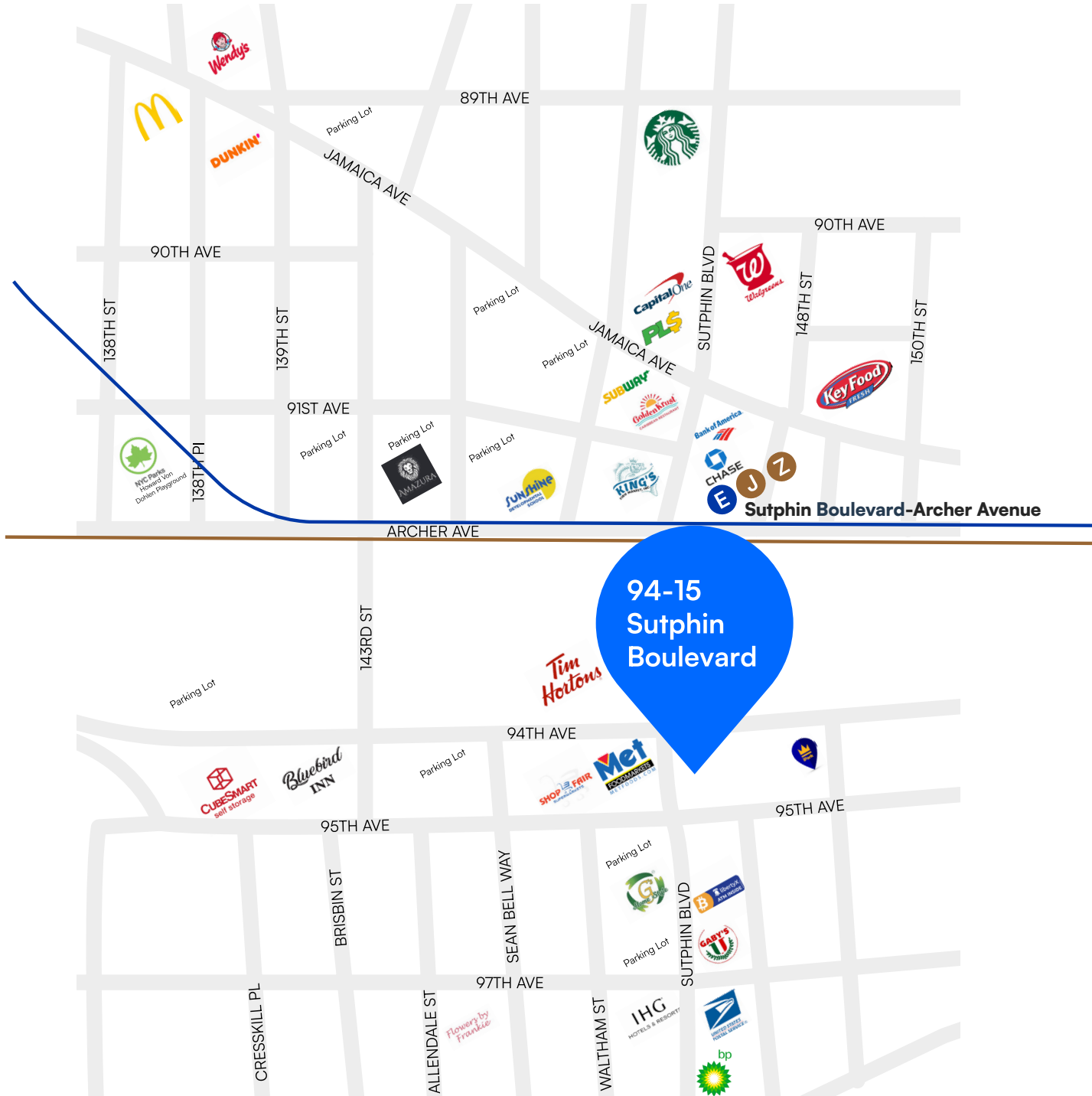


FLOOR PLANS



All square footages are approximate

RETAIL MAP



94-15
Sutphin
Boulevard



PLACE
YOURSELF ON
THE JAMAICA
MAP

LOCATION OVERVIEW

LOCATION OVERVIEW

At the heart of Downtown Jamaica, this bustling stretch of Sutphin Boulevard serves as one of Queens' most important commercial and transit hubs. The area offers heavy foot traffic, excellent visibility, and a diverse mix of national retailers, government offices, and local dining. With immediate access to JFK Airport via the AirTrain, as well as major subway and LIRR connections, it combines civic energy with growing residential and business investment.

POINTS OF INTEREST

- King Manor Museum
- Rufus King Park
- Jamaica Center for Arts and Learning (JCAL)
- Jamaica Performing Arts Center (JPAC)
- Regal UA Kaufman Astoria
- Roy Wilkins Park

DEMOGRAPHICS

Within a one-mile radius of the property

34,389

Total Households

110,353

People

\$95,616

Avg Household Income

94-15 SUTPHIN BOULEVARD, QUEENS, NY 11435

2,300 – 3,750 SF FOURTH FLOOR OFFICE SPACES

Between 94th Avenue & 95th Avenue

For Pricing Call: **212.433.3355**

SHLOMI BAGDADI
212.433.3355 x101
sb@tristatecr.com

RICHARD BABECK
212.433.3355 x119
richard.b@tristatecr.com

TSC.