

Office / Warehouse

Located in Roper Industrial Centre

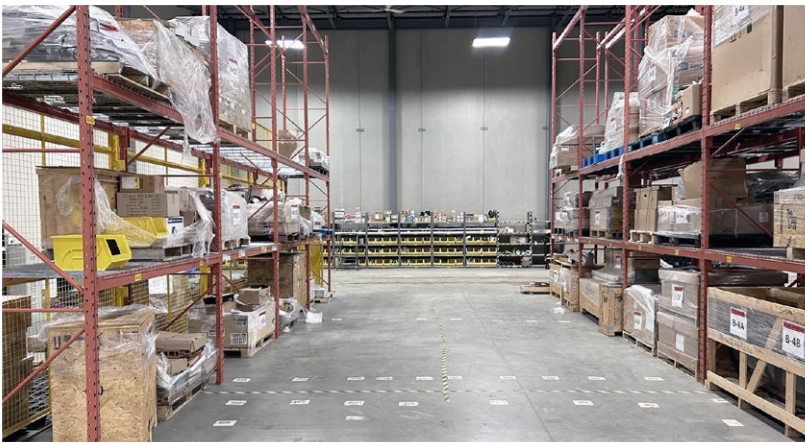
5759 - 67th Street
Edmonton, Alberta
www.cbre.ca

17,235 SF Available



Office / Warehouse in Roper Industrial Centre

5759 - 67th Street | Edmonton, Alberta



Office / Warehouse

Located in Roper Industrial Centre

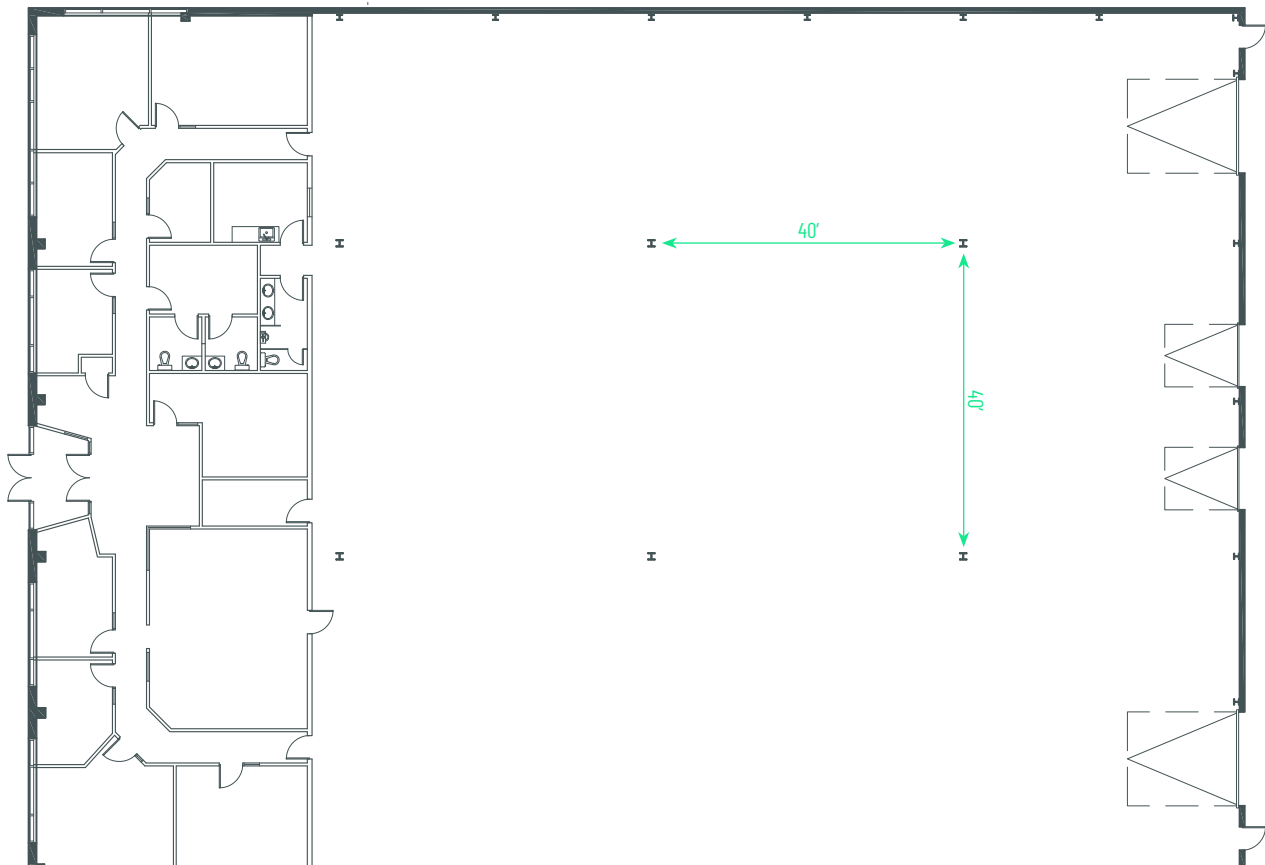
Great location in Roper Industrial Park with easy access to Roper Road, 50th Street, 75th Street, and Whitemud Drive. This functional end-bay unit includes attractive office space with ample windows and both dock and grade loading.

For Lease

Legal Address	Plan 9826066; Block 5; Lot 18	
Zoning	IM - Medium Industrial	
Year Built	2005	
Available Area	Office	3,983 sq. ft.
	Warehouse	13,252 sq. ft.
	Total	17,235 sq. ft.
Dock Loading	(2) 8' x 10' with levelers	
Grade Loading	(2) 12' x 16'	
Construction	Steel frame & concrete	
Column Spacing	40' x 40'	
Ceiling Height	28' clear	
Power	200 amp, 600 volt <i>*To be confirmed</i>	

Heating	Overhead gas fired unit heaters
Downdraft Fans	Yes
Lighting	T5HO
Sprinklers	Yes
Parking	Surface
Sumps	2-stage with trench drain
Op Costs (2025)	\$8.14 per sq. ft. / annum
Lease Rate	Starting at \$9.00 per sq. ft. / annum
Available	Immediately

Floorplan



Office / Warehouse in Roper Industrial Centre

5759 - 67th Street | Edmonton, Alberta

For Lease



Contact Us

Kevin Hughes

Senior Vice President
+1 780 917 4634
kevin.hughes@cbre.com

Gregg Maimann

Senior Vice President
+1 780 917 4632
gregg.maimann@cbre.com

Trevor Schmidt

Vice President
+1 780 917 4641
trevor.schmidt@cbre.com

Jordan Adams

Vice President
+1 780 917 4645
jordan.adams@cbre.com

Braylon Klemchuk

Vice President
+1 780 229 4687
braylon.klemchuk@cbre.com

Jay Olmstead

Sales Representative
+1 780 554 1191
jay.olmstead@cbre.com

John Allan McKay

Associate
+1 780 915 5020
johnallan.mckay@cbre.com

Lucas Neumeyer

Associate
+1 780 850 2267
lucas.neumeyer@cbre.com

*(Sub) Tenant / Purchaser is responsible to confirm the electrical service to the premises / building and ensure it is sufficient for their intended use.

This disclaimer shall apply to CBRE Limited, Real Estate Brokerage, and to all other divisions of the Corporation; to include all employees and independent contractors ("CBRE"). The information set out herein, including, without limitation, any projections, images, opinions, assumptions and estimates obtained from third parties (the "Information") has not been verified by CBRE, and CBRE does not represent, warrant or guarantee the accuracy, correctness and completeness of the Information. CBRE does not accept or assume any responsibility or liability, direct or consequential, for the Information or the recipient's reliance upon the Information. The recipient of the Information should take such steps as the recipient may deem necessary to verify the Information prior to placing any reliance upon the Information. The Information may change and any property described in the Information may be withdrawn from the market at any time without notice or obligation to the recipient from CBRE. CBRE and the CBRE logo are the service marks of CBRE Limited and/or its affiliated or related companies in other countries. All other marks displayed on this document are the property of their respective owners. All Rights Reserved.