

150

BROADWAY

MAIDEN LN & LIBERTY ST | FIDI

Daleriäch

YOUR SIGN HERE

WESTINGHOUSE BUILDING

150

Bank of America

We're in this together

Bank of America

MINISO

MINISO

SIZE: Ground Floor - 1,500 SF

FRONTAGE: 25' on Broadway

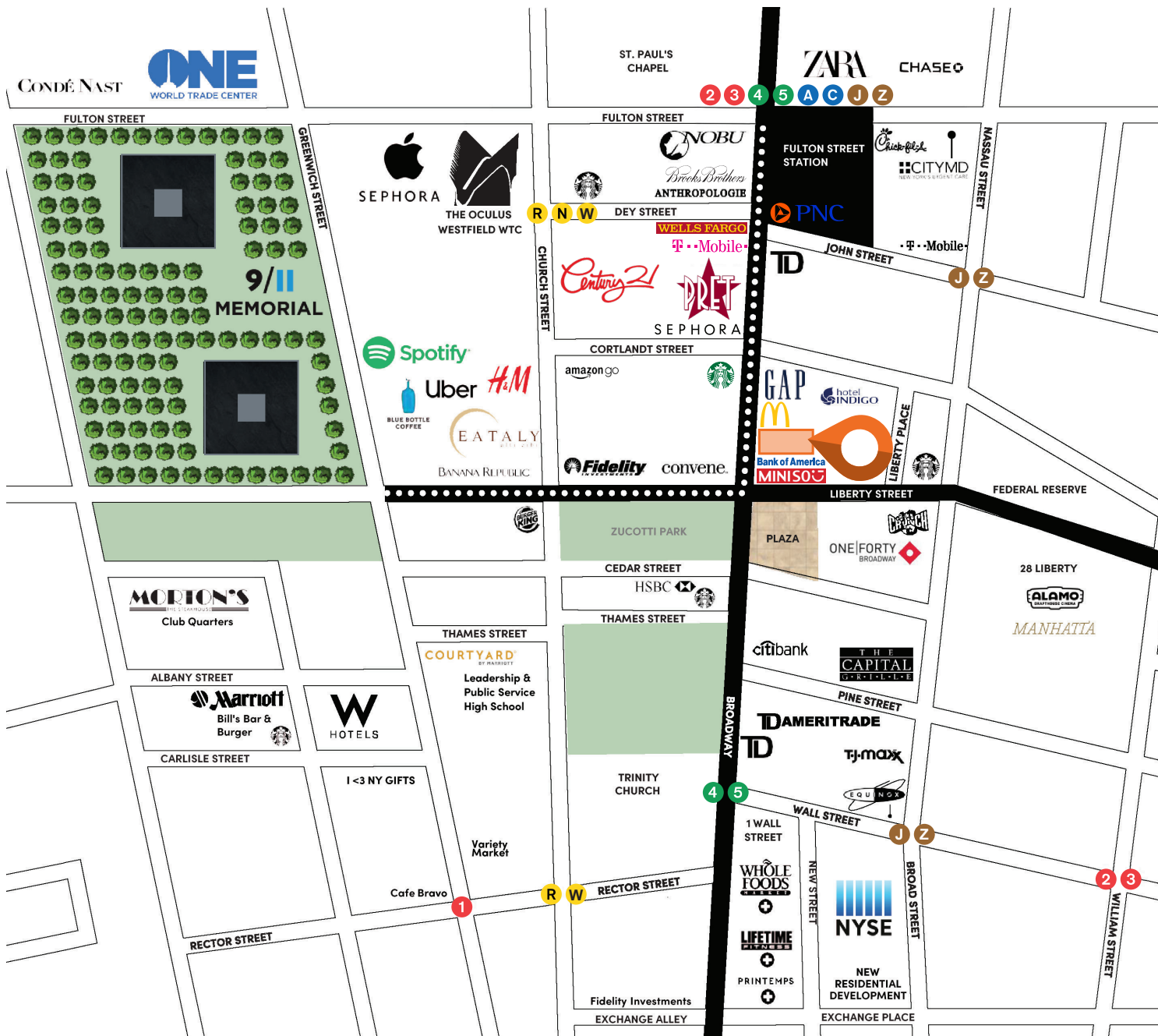
CEILING HEIGHTS: 14' - 18' Ground Floor

POSSESSION: Immediate

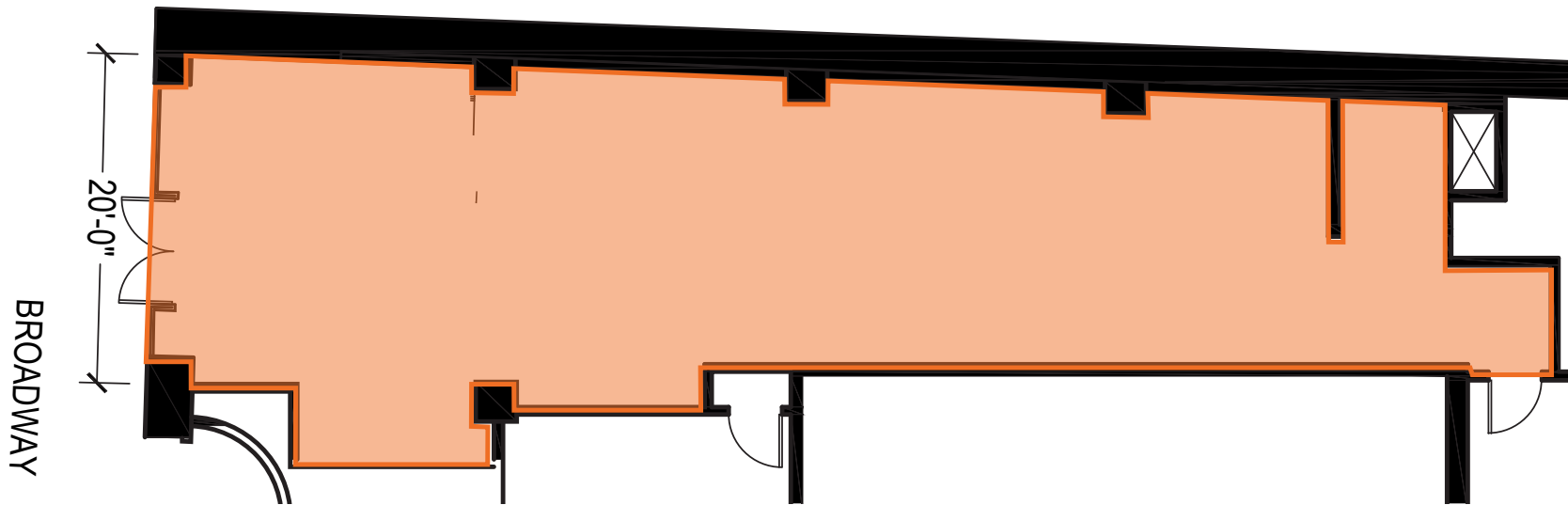
TRANSPORTATION: 

HIGHLIGHTS:

- Situated in the heart of FiDi between The Fulton Center and World Trade Center transportation hubs, attracting non-stop foot traffic from tourists, commuters, & locals
- Within walking distance to global fashion labels, indoor malls (*Brookfield Place, Westfield, South Street Seaport*), and food halls
- Heavy foot & vehicle traffic area surrounded by roughly 5,766 residential units
- Open to all uses including food
- Excellent national cotenancy - Directly adjacent to Miniso's Downtown flagship location
- Neighboring tenants: *Miniso, Gap, Zara, Sephora, Century 21, Starbucks, Whole Food, Life Time, Chick-fil-A, Shake Shack, Equinox, TJ Maxx, Bank of America, McDonalds, PNC Bank, & many more!*



FLOOR PLAN:
GROUND FLOOR - 1,500 SF





36,975 Residential Units

in 349 buildings, with 6,265 Units in 18 buildings being developed



300,000 Daily Commuters

from WTC Transit Hub and Fulton Center, 5th busiest subway station in Manhattan and 25 Million annual ridership



70,000 Estimated Residents

in 2025



40% Increase

in college educated adults and 3X growth in families since 2020



44 Hotels / 8,534 Rooms

and 4 hotels currently in development with 642 rooms



90 Million SF

Office Density



9.3 Million Tourists in 2024

up 244% from 2020



150

BROADWAY

MAIDEN LN & LIBERTY ST | FIDI

FOR MORE INFORMATION,
PLEASE CONTACT:

FREDDY SOUID

917.968.0329 | FSouid@ksrny.com

JACK HAMADANI

718.415.0095 | JHamadani@ksrny.com

DARREN KASSIN

917.684.7271 | DKassin@ksrny.com

JEMB | **ksr**
REALTY

All information supplied in this marketing presentation and/or flyer is from sources deemed reliable and is furnished subject to errors, omissions, modifications, removal of listings from sale/lease and to any listing condition. Any square footage, dimensions, floor plans and/or technical data set forth are approximations and are subject to further elaboration/confirmation.