

# 24432

## MUIRLANDS BLVD

### FOR LEASE

OFFICE SPACE AVAILABLE





## PROPERTY FEATURES

- Common Area Interior and Exterior Renovations Underway
- Great Window Line
- In-Suite Restrooms
- Elevator Served
- Close Proximity to Memorial Care Hospital, Retail, and Residential
- Nearby Access to the 5 Freeway
- **PROMO RATE:** \$0.99 NNN, \$1.45 NNN Thereafter

## AVAILABILITY

- **SUITE 131:** ±1,887 SF



**ALLEN BASSO**  
Lic. #01298152  
949.790.3130  
abasso@leeirvine.com



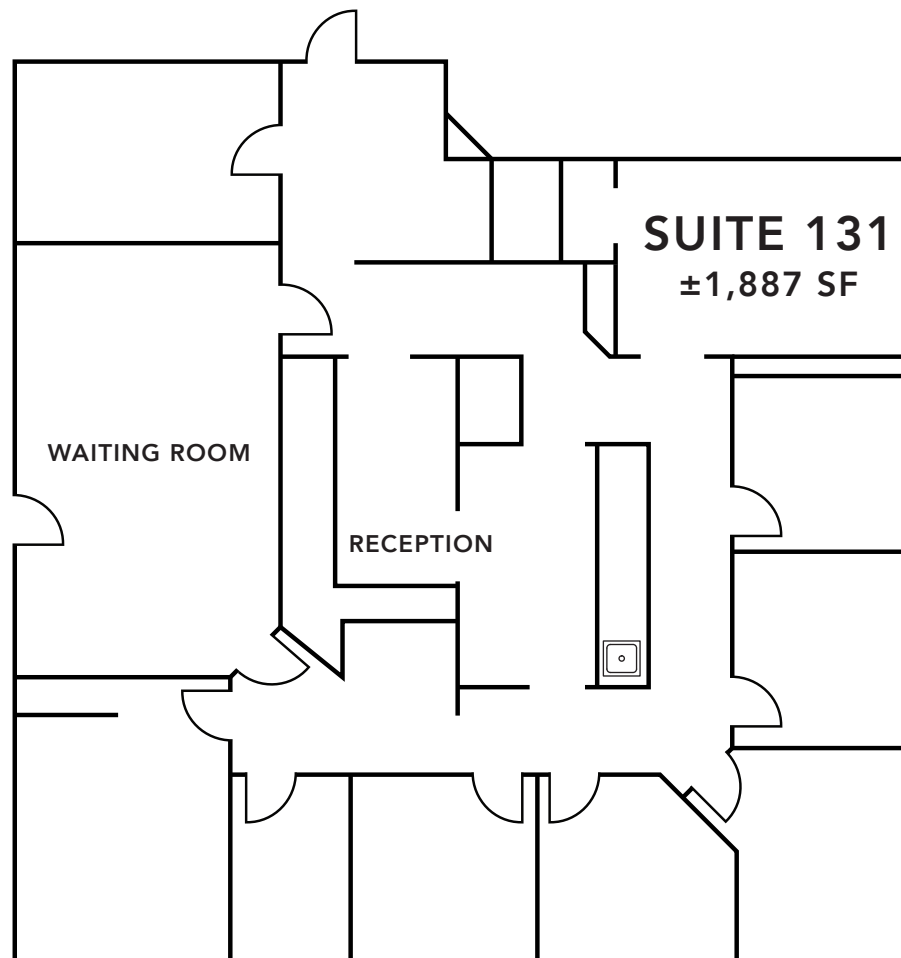
**ERIC DARNELL**  
Lic. #01888743  
949.460.3681  
edarnell@leeirvine.com



**KYLEE KING**  
Lic. #02101275  
949.790.3108  
kking@leeirvine.com



# 24432 MUIRLANDS BLVD - 1<sup>ST</sup> FLOOR





**LEE & ASSOCIATES**  
COMMERCIAL REAL ESTATE SERVICES

**OC**  
OFFICE GROUP

The information contained herein has been obtained from the property owner or other third party and is provided to you without verification as to accuracy. We (Lee & Associates, its brokers, employees, agents, principals, officers, directors and affiliates) make no warranty or representation regarding the information, property, or transaction. You and your attorneys, advisors and consultants should conduct your own investigation of the property and transaction.

**ALLEN BASSO**  
Lic. #01298152  
949.790.3130  
abasso@leeirvine.com

**ERIC DARNELL**  
Lic. #01888743  
949.460.3681  
edarnell@leeirvine.com

**KYLEE KING**  
Lic. #02101275  
949.790.3108  
kking@leeirvine.com

# NEARBY AMENITIES



**FOREST RIDGE PLAZA**

**LEE & ASSOCIATES**   
 COMMERCIAL REAL ESTATE SERVICES

**OFFICE GROUP**

The information contained herein has been obtained from the property owner or other third party and is provided to you without verification as to accuracy. We (Lee & Associates, its brokers, employees, agents, principals, officers, directors and affiliates) make no warranty or representation regarding the information, property, or transaction. You and your attorneys, advisors and consultants should conduct your own investigation of the property and transaction.

**ALLEN BASSO**   
 Lic. #01298152   
 949.790.3130   
 abasso@leeirvine.com

**ERIC DARNELL**   
 Lic. #01888743   
 949.460.3681   
 edarnell@leeirvine.com

**KYLEE KING**   
 Lic. #02101275   
 949.790.3108   
 kking@leeirvine.com



**ALLEN BASSO**

Lic. #01298152

949.790.3130

abasso@leeirvine.com



**ERIC DARNELL**

Lic. #01888743

949.460.3681

edarnell@leeirvine.com



**KYLEE KING**

Lic. #02101275

949.790.3108

kking@leeirvine.com

# 24432

## MUIRLANDS BLVD

FOR LEASE

±1,887 SF OFFICE SPACE AVAILABLE



COMMERCIAL REAL ESTATE SERVICES



The information contained herein has been obtained from the property owner or other third party and is provided to you without verification as to accuracy. We (Lee & Associates, its brokers, employees, agents, principals, officers, directors and affiliates) make no warranty or representation regarding the information, property, or transaction. You and your attorneys, advisors and consultants should conduct your own investigation of the property and transaction.