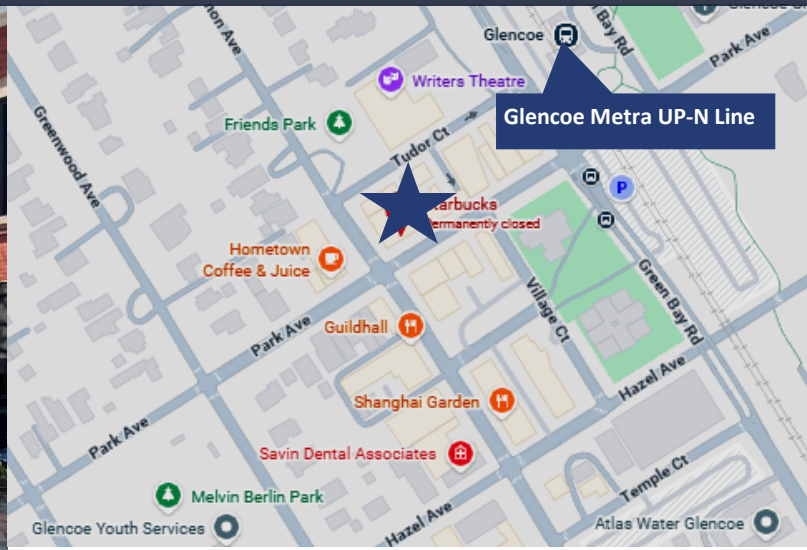


HEART OF DOWNTOWN GLENCOE FORMER STARBUCKS LOCATION

347 Park Ave
Glencoe, IL 60022



	1 Mile	3 Miles	5 Miles
Population	7,583	39,884	135,271
Households	2,535	14,118	49,788
Avg HH Income	\$200,407	\$195,811	\$178,623

Former Starbucks space in the heart of downtown Glencoe. The space includes a basement for storage. Located next to corner Walgreens, steps from the Metra station, local shops, and dining. High foot traffic from both commuters and neighborhood residents, making this an ideal setting for retailers seeking a North Shore presence. With front curbside parking, nearby public parking, plus a walkable, upscale village environment, tenants benefit from both visibility and accessibility.

SIZE: 2,062 SF
Ground Floor

LEASE PRICE: \$14,000
Monthly, NNN

PASS THRU: \$2,234 Monthly

BASEMENT: Yes

LOCATION: Heart of
Downtown
Glencoe

CONTACT

Craig Wolf
773 736 3600 Office
847 989 9653 Mobile
craig@straussrealty.com

STRAUSS
REALTY, LTD.

HEART OF DOWNTOWN GLENCOE
FORMER STARBUCKS LOCATION

347 Park Ave
Glencoe, IL 60022



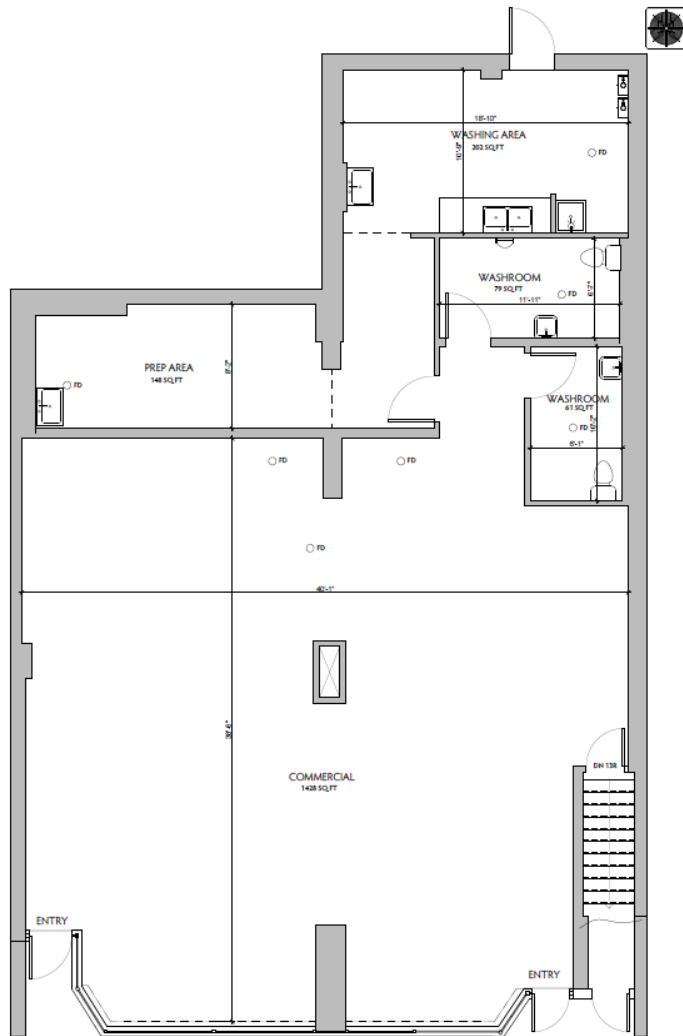
CONTACT

Craig Wolf
773 736 3600 Office
847 989 9653 Mobile
craig@straussrealty.com

STRAUSS
REALTY, LTD.

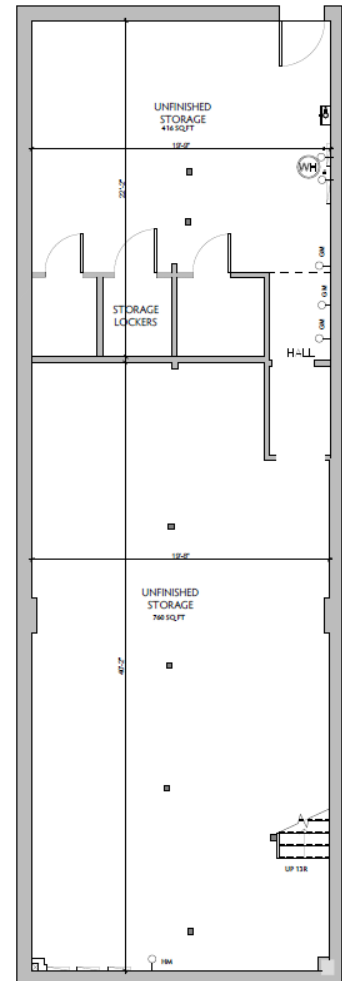
HEART OF DOWNTOWN GLENCOE FORMER STARBUCKS LOCATION

347 Park Ave
Glencoe, IL 60022



FIRST FLOOR PLAN: PROPOSED
SCALE: 1/4" = 1'-0"

TOTAL SQ.FT. 2062 SQ.FT.



FIRST FLOOR PLAN: PROPOSED
SCALE: 1/4" = 1'-0"

TOTAL SQ.FT. 1232 SQ.FT.

CONTACT

Craig Wolf
773 736 3600 Office
847 989 9653 Mobile
craig@straussrealty.com

