



**PROPERTY DESCRIPTION**

1485 Civic Ct is a great choice for professionals and governmental agencies. This building was built in 1983, is an office building (class B) in Concord, situated on 1.89 acres of land. There are 134 surface parking spaces in the parking lot. It has easy access to both the I-680 and 242 freeways. The building has a security system, elevator, HVAC system, and gated parking space.

Suite 1330 consists of approximately ±7,822 SF of executive office space located on the ground floor. The suite features numerous private offices (30 private offices), a reception area, a kitchen, and a print/copy room, along with the essential infrastructure needed to support day-to-day business operations.

The space has been recently renovated with fresh paint and new flooring, creating a clean and professional environment. The existing layout also offers potential to split the suite into smaller configurations, providing flexibility for a variety of office users.

**FOR 3D TOUR PLEASE CLICK HERE:**

<https://my.matterport.com/show/?m=FQA1X31e6Ud>

**OFFERING SUMMARY**

Property Type:	Commercial /Office
Lease Rate:	\$1.50 SF/month (MG)
Lease Term:	Negotiable
Space Size:	± 7,822 SF
Building Size:	32,890 SF

**Moji Morovvat**  
 VP of Brokerage  
[moji@sgrealestateco.com](mailto:moji@sgrealestateco.com)  
 510.987.8944  
 Cal DRE #02034867





**UNIT HIGHLIGHTS**

- Proximity to freeways: I-680 and 242
- Near Sun Valley Shopping Center, Willows Shopping Center, The Veranda, and Six Flags Airport Home Appliances
- Space size: ± 7,822 SF (can split up to ± 3,822 SF)
- +30 Private offices (formerly executive suites)
- Large Meeting Room -Conference Rooms
- Large Break Room and Kitchen
- Server Room with Dedicated HVAC
- Multi-stall shared restrooms on Each Floor
- Ample Parking
- Reception Area
- Fully Carpeted
- Central Air and Heating

**Moji Morovvat**  
VP of Brokerage  
[moji@sgrealestateco.com](mailto:moji@sgrealestateco.com)  
510.987.8944  
Cal DRE #02034867





REAL ESTATE

## Interior Photos

1485 Civic Ct, Ste 1330, Concord



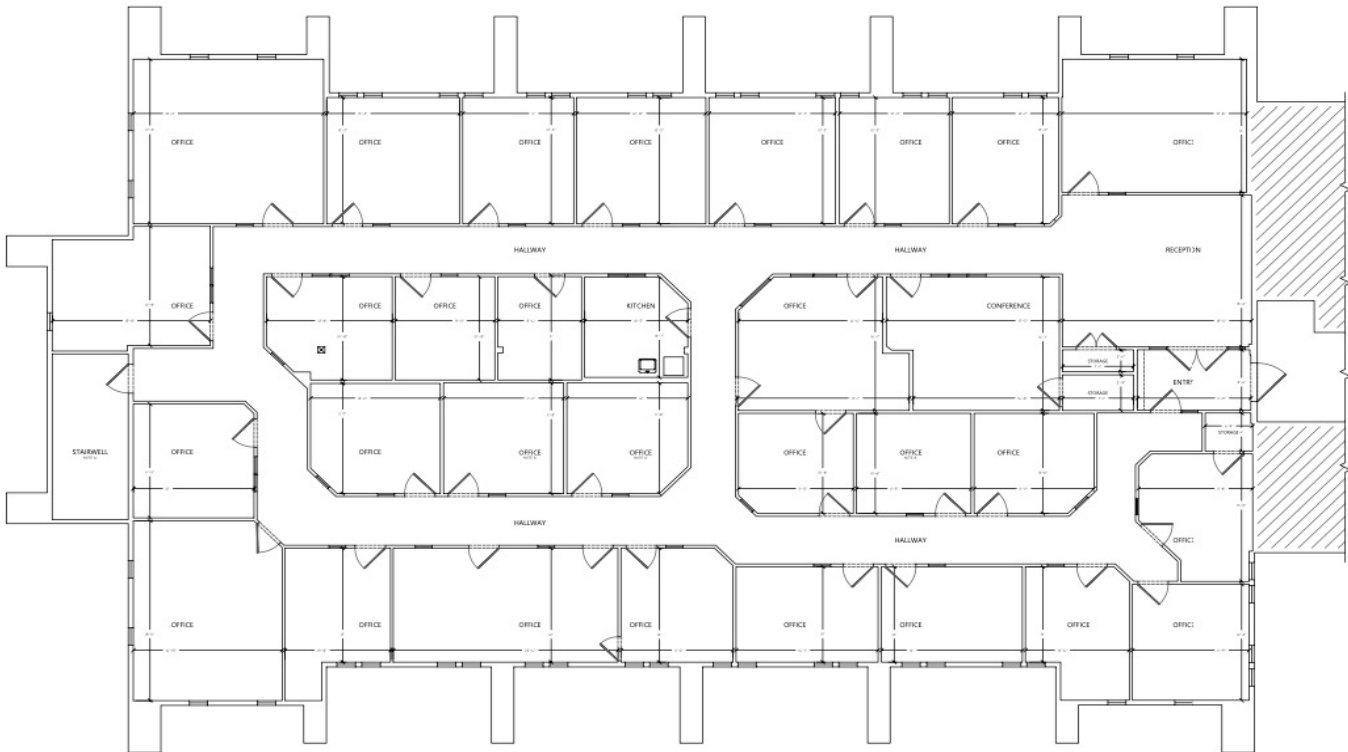
Moji Morovvat  
VP of Brokerage  
[moji@sgrealestateco.com](mailto:moji@sgrealestateco.com)  
510.987.8944  
Cal DRE #02034867





# Floor Plan

1485 Civic Ct, Ste 1330, Concord



EXISTING ENTRY LEVEL FLOOR PLAN

DATE: 11/11/2020  
 DRAWN BY: J. MOROVAT  
 CHECKED BY: J. MOROVAT  
 SCALE: AS SHOWN

**Moji Morovat**  
 VP of Brokerage  
[moji@sgrealestateco.com](mailto:moji@sgrealestateco.com)  
 510.987.8944  
 Cal DRE #02034867





REAL ESTATE

# Neighborhood

1485 Civic Ct, Ste 1330, Concord



Map data ©2026 Google Imagery ©2026 Airbus, Maxar Technologies, Vexcel Imaging US, Inc.

Moji Morovvat  
 VP of Brokerage  
 moji@sgrealestateco.com  
 510.987.8944  
 Cal DRE #02034867





# Demographic

1485 Civic Ct, Ste 1330, Concord



### POPULATION

	1 MILE	2 MILES	3 MILES
Total Population	19,742	77,485	142,908
Average Age	35.6	37.9	39.4
Average Age (Male)	31.2	35.8	37.8
Average Age (Female)	38.4	39.8	41.2

\* Demographic data derived from 2020 ACS - US Census

**Moji Morovvat**  
 VP of Brokerage  
 moji@sgrealestateco.com  
 510.987.8944  
 Cal DRE #02034867

