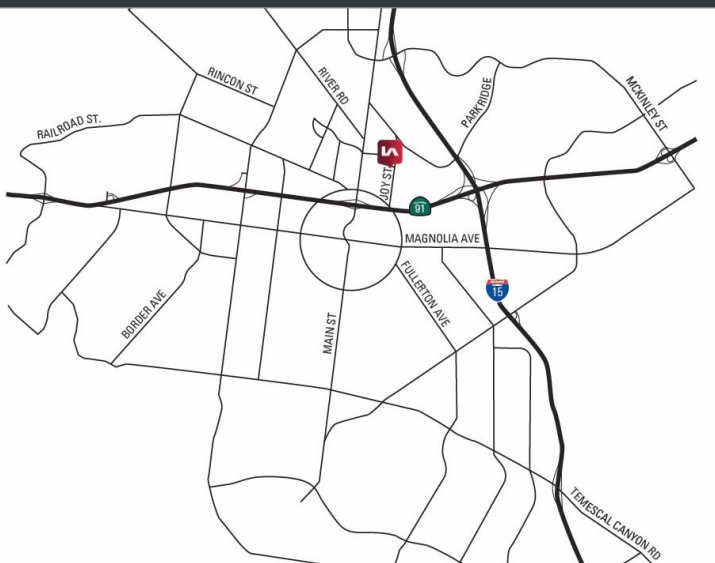




# PRINCELAND COURT

CORONA, CALIFORNIA

**1,050 - 9,950 SF  
MULTI-TENANT INDUSTRIAL PARK**



## PROPERTY FEATURES:

- » Part of a master planned project
- » Great location with easy freeway access to both the 91 and 15 freeways
- » Walking distance to the Corona Metro-Link Station
- » Abundant retail amenities adjacent to the property
- » Fire sprinklers
- » 14' clear height

## CONTACT US

### CHRIS COYTE

Lee & Associates - Ontario

909.373.2935

ccoyle@lee-assoc.com

DRE #01017328

### JOHN MARTIN

Lee & Associates - Ontario

949.373.2941

jmartin@lee-assoc.com

DRE #01346629



COMMERCIAL REAL ESTATE SERVICES

DISCLAIMER: The information contained herein has been obtained from the property owner or other third party and is provided to you without verification as to accuracy. We (Lee & Associates, its brokers, employees, agents, principals, officers, directors and affiliates) make no warranty or representation regarding the information, property, or transaction. You and your attorneys, advisors and consultants should conduct your own investigation of the property and transaction.

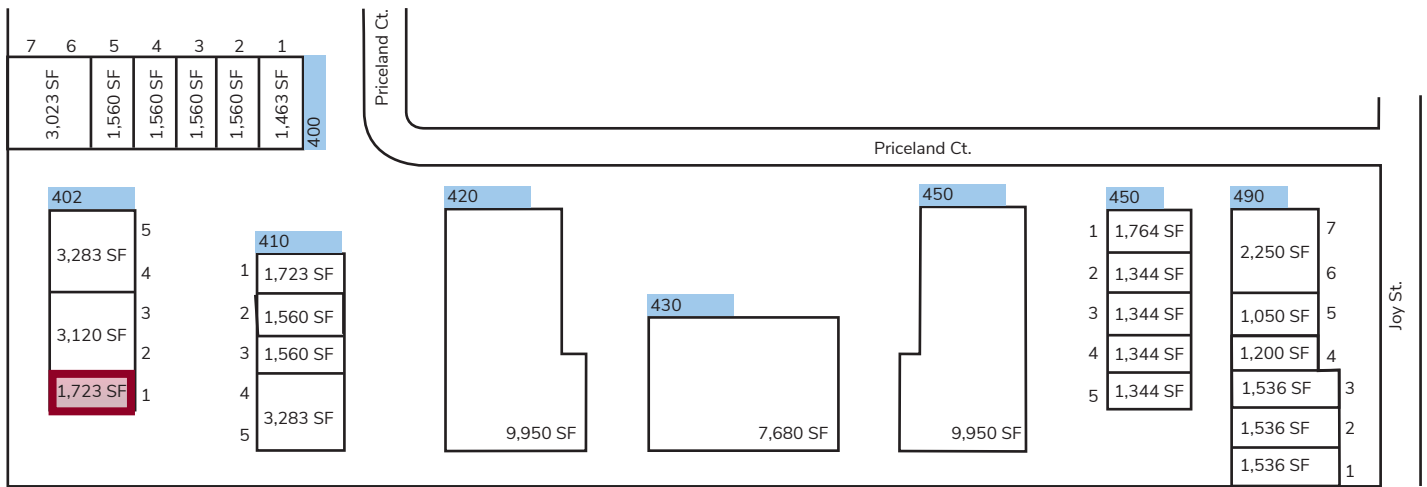


# PRINCLAND COURT

## CORONA, CALIFORNIA

### CURRENT AVAILABILITY

ADDRESS	AVAILABLE SF	OFFICE SF	PRICE PSF*	CAM FEE	DATE AVAIL.
402 Princland Court, Suite 1	±1,723	±500	<b>\$1.60 MG</b>	<b>\$.08</b>	Now



## CONTACT US

**CHRIS COYTE**  
 Lee & Associates - Ontario  
 909.373.2935  
 ccoyte@lee-assoc.com  
 DRE #01017328

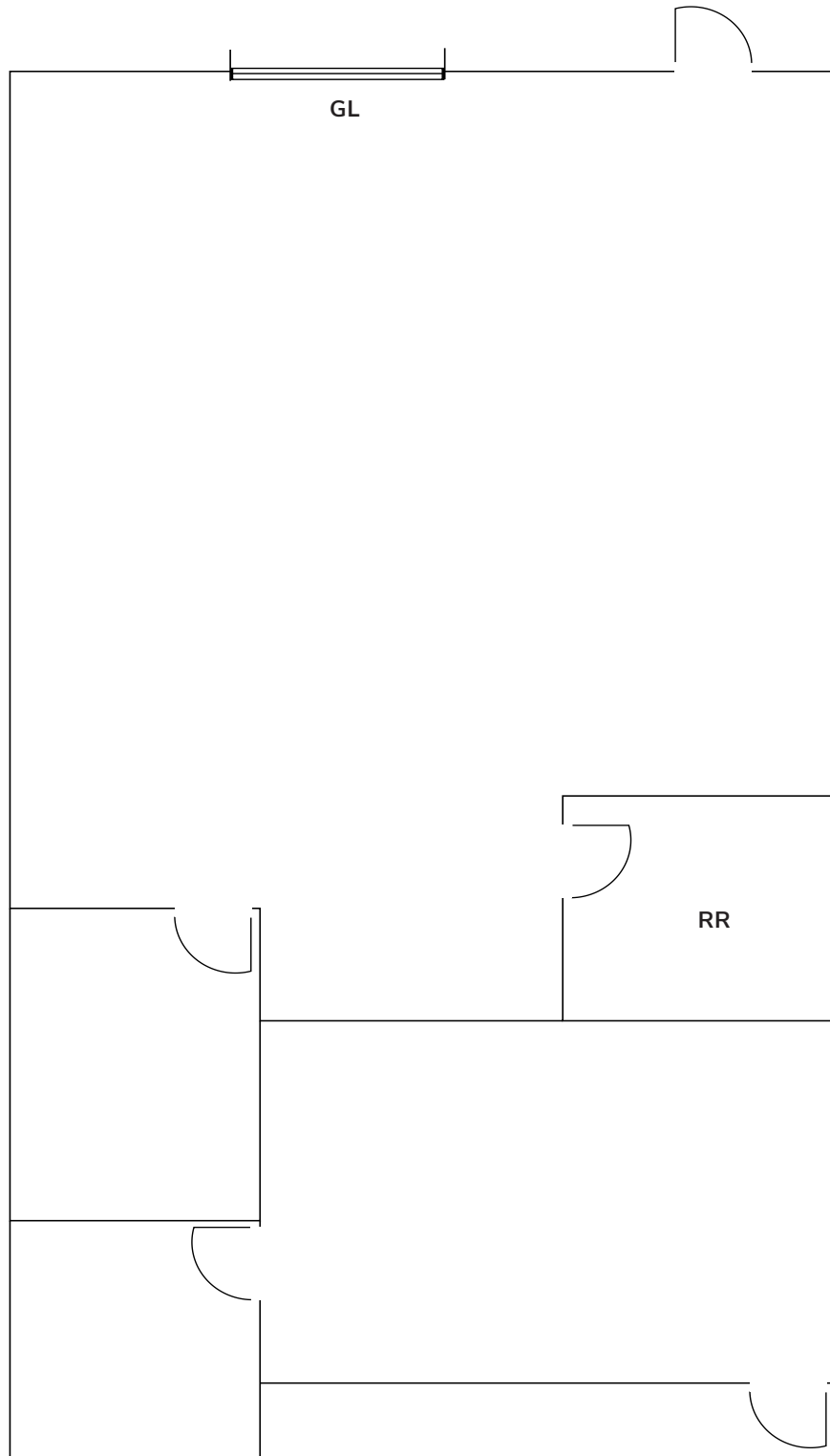
**JOHN MARTIN**  
 Lee & Associates - Ontario  
 949.373.2941  
 jmartin@lee-assoc.com  
 DRE #01346629



DISCLAIMER: The information contained herein has been obtained from the property owner or other third party and is provided to you without verification as to accuracy. We (Lee & Associates, its brokers, employees, agents, principals, officers, directors and affiliates) make no warranty or representation regarding the information, property, or transaction. You and your attorneys, advisors and consultants should conduct your own investigation of the property and transaction.

# PRINCELAND COURT

402 Princeland Court, Suite 1



## CONTACT US

### CHRIS COYTE

Lee & Associates - Ontario

909.373.2935

ccoyle@lee-assoc.com

DRE #01017328

### JOHN MARTIN

Lee & Associates - Ontario

949.373.2941

martin@lee-assoc.com

DRE #01346629



DISCLAIMER: The information contained herein has been obtained from the property owner or other third party and is provided to you without verification as to accuracy. We (Lee & Associates, its brokers, employees, agents, principals, officers, directors and affiliates) make no warranty or representation regarding the information, property, or transaction. You and your attorneys, advisors and consultants should conduct your own investigation of the property and transaction.