



**FOR LEASE** | 2<sup>nd</sup> Floor - 1242 Robson Street, Vancouver, BC

## Newly Improved Robson Retail/Office Space

### Property Highlights:

This is a rare opportunity to lease a unique retail/office space along the amenity-rich Robson Street. The space is open concept with a rooftop sky-light for ample natural light and exposed ceilings.

**John Freyvogel**

Personal Real Estate Corporation  
Vice President, Leasing & Sales  
604 691 6640  
jfreyvogel@naicommercial.ca

**NAI Commercial**

1075 W Georgia St, Suite 1300  
Vancouver, BC V6E 3C9  
+1 604 683 7535 | [naicommercial.ca](http://naicommercial.ca)



## 2<sup>nd</sup> Floor - 1242 Robson Street

Vancouver, BC

### Location

1242 Robson Street is located in the West End situated between Bute and Jarvis Street on the South side of the street. The building is surrounded by an array of restaurants, shops, amenities and transit.

### Features

- ▶ Rare full floor retail/office opportunity
- ▶ Prominent Robson Street signage and access
- ▶ Brand new improvements, including exposed ceilings, polished concrete floors, LED lighting
- ▶ HVAC distribution
- ▶ Open concept space, built out with half walls creating two separate open space areas, one meeting room/large office, kitchenette and in-suite washrooms
- ▶ Private tenant exclusive patios on both North and South sides
- ▶ Abundant natural light throughout suite with rooftop skylights and large windows

### Size

6,715 SF

### Availability

Immediate

### Net Rent

\$12.00/SF per annum

### Additional Rent (2026 est.)

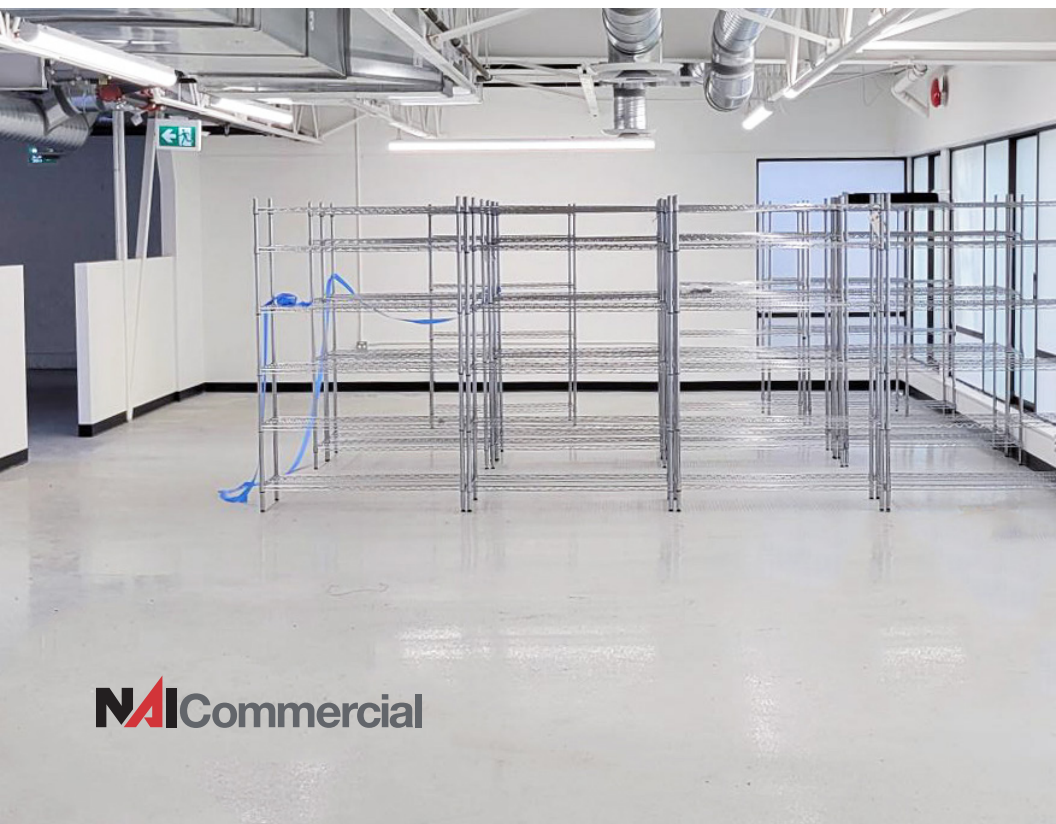
\$27.29/SF per annum  
*Hydro is separately metered*

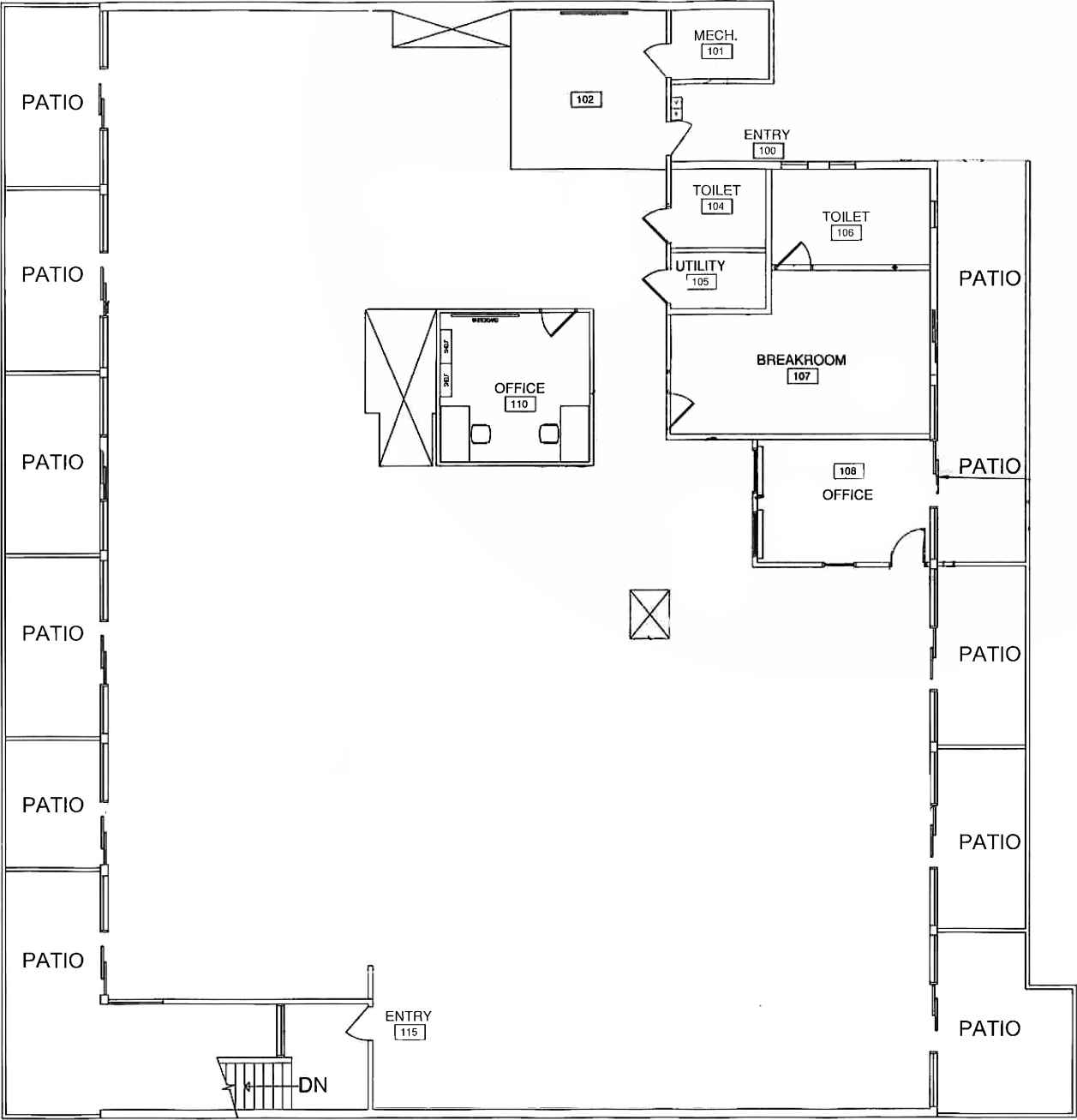
### Parking

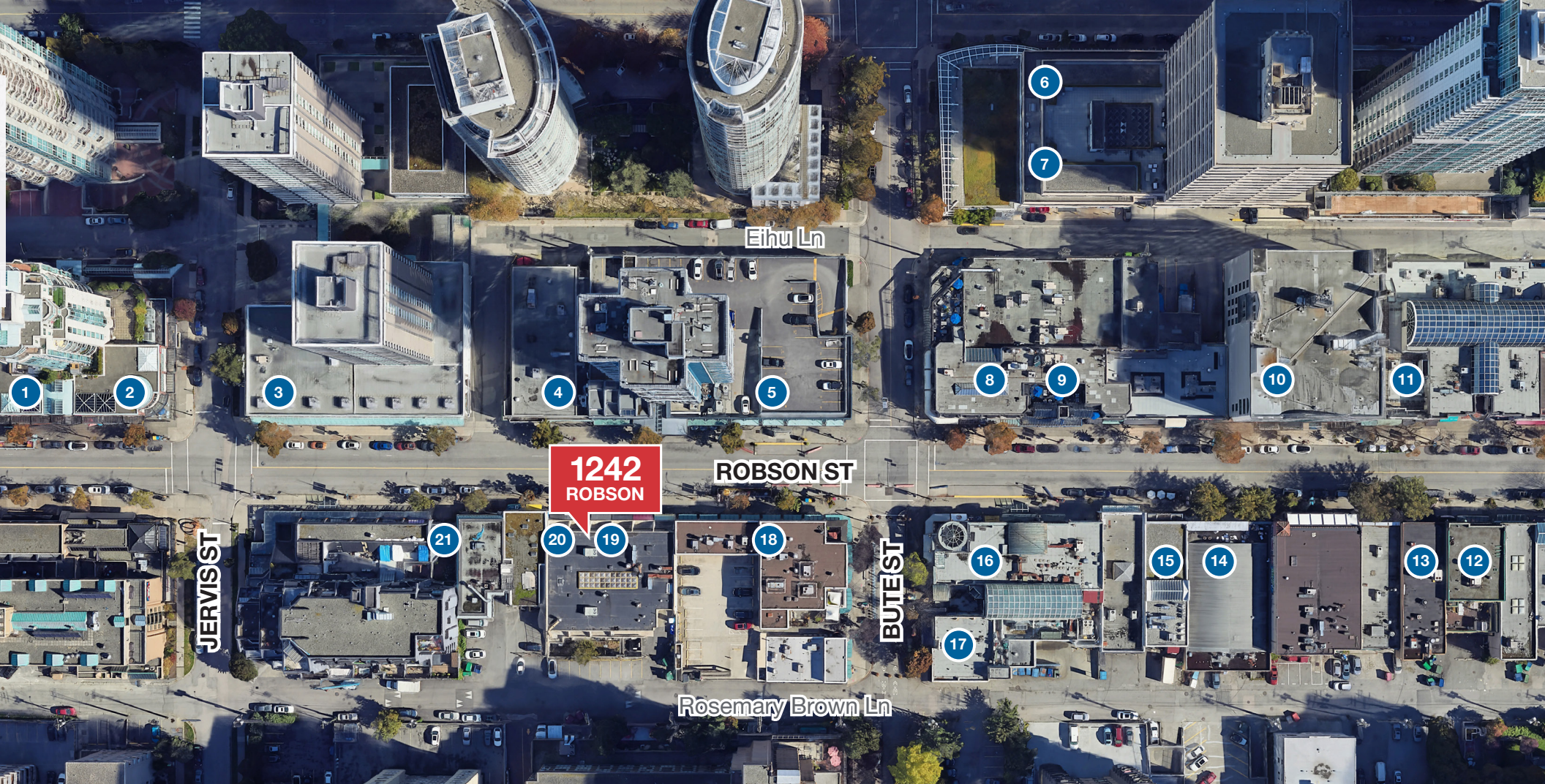
Two reserved stalls at rear of building at market rates

### Zoning

DD (Downtown District)










- 1. Ramen Danbo
- 2. Hannam Supermarket
- 3. Tim Hortons
- 4. Shenanigans on Robson
- 5. Scotiabank
- 6. JJ Bean Coffee Roasters
- 7. BCLIQUOR

- 8. Earls Kitchen + Bar
- 9. London Drugs
- 10. Roots
- 11. Ladurée
- 12. Kosoo Korean
- 13. Zefferelli's Spaghetti Joint
- 14. New Balance Robson

- 15. Paul Restaurant, Café and Bakery
- 16. Freshslice Pizza
- 17. Breka Bakery & Café
- 18. The Candy Room
- 19. Rice and Noodle
- 20. Konbiniya Japanese Centre
- 21. Hello Kitty Cafe

 **98** WALKER'S PARADISE  
 **100** RIDER'S PARADISE  
 **80** VERY BIKEABLE

**John Freyvogel**  
 Personal Real Estate Corporation  
 Vice President, Leasing & Sales  
 604 691 6640  
[jfreyvogel@naicommercial.ca](mailto:jfreyvogel@naicommercial.ca)

**NAI Commercial**

1075 W Georgia St, Suite 1300, Vancouver, BC V6E 3C9 | +1 604 683 7535 | [naicommercial.ca](http://naicommercial.ca)

© 2025 NAI Commercial (BC) Ltd. All Rights Reserved.  
 No warranty or representation, express or implied, is made as to the accuracy of the information contained herein, and the same is submitted subject to errors, omissions, change of price, rental or other conditions, prior sale, lease or financing, or withdrawal without notice, and of any special listing conditions imposed by our principals no warranties or representations are made as to the condition of the property or any hazards contained therein are any to be implied. Aerial image(s) courtesy of Google, Landsat/Copernicus