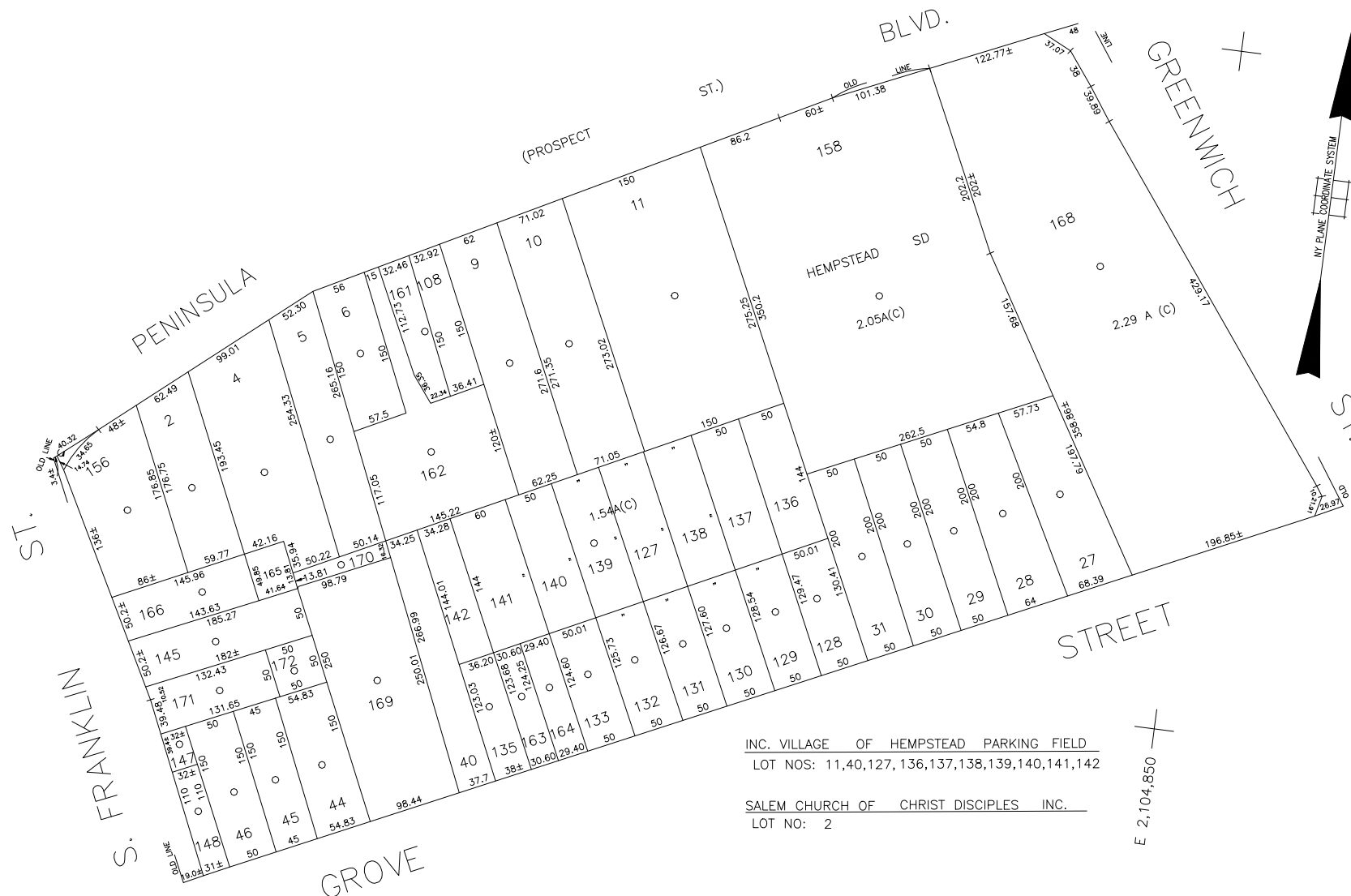


N 174,200

E 2,103,600



SALEM CHURCH OF CHRIST DISCIPLES INC.
LOT NO: 2

L E G E N D										SPECIAL DISTRICTS										M U N I C I P A L I T I E S									
<div>COUNTY LINE TOWN LINE VILLAGE LINE SCHOOL DISTRICT LINE PROPERTY LINE SPECIAL DISTRICT LINE BLOCK LIMIT LOCATOR POINT TAX MAP PARCEL NO. CALCULATED ACREAGE DEED ACREAGE SCALED DIMENSION DEED DIMENSION REFERENCE MAPS MAP NO.</div>										<div>POLICE WATER LIGHTING LIBRARY FIRE</div>										<div>FIRE PROTECTION SANITARY REFUSE & GARBAGE REFUSE DISPOSAL Town of Hempstead SEWAGE COLLECTION </div>									