

# 66

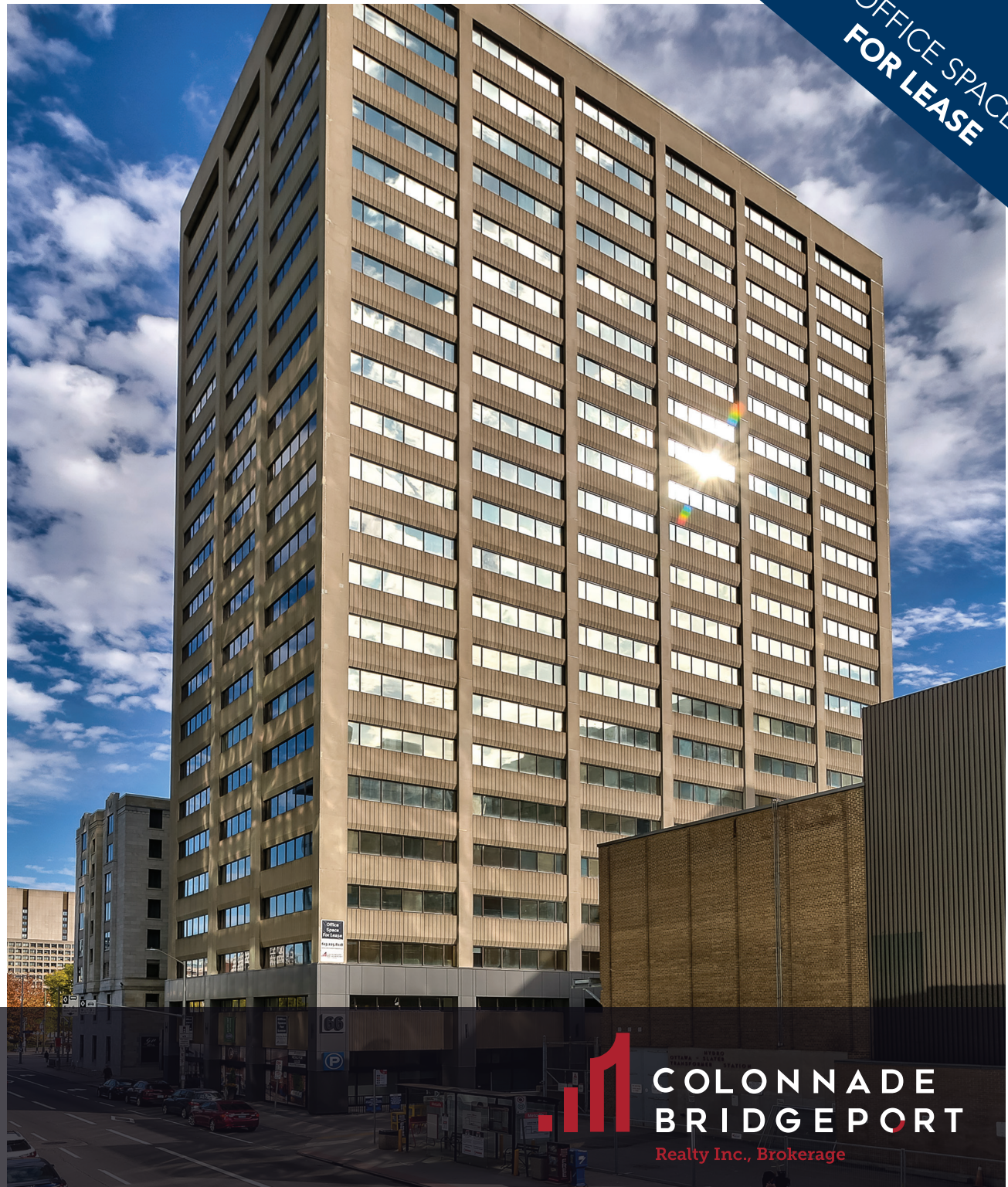
## SLATER STREET

Ottawa, Ontario

**Suite 700 - 11,665 SF**

**Suite 1730 - 3,001 SF**

**Suite 2200 - 11,666 SF**



OFFICE SPACE  
FOR LEASE

**BRENT ARSENAU**

Real Estate Broker of Record

Colonnade BridgePort Realty Inc., Brokerage

613.225.8118



**COLONNADE  
BRIDGEPORT**

Realty Inc., Brokerage

# 66 SLATER STREET

Ottawa, Ontario

## LEASE DETAILS

**Rental Rate:** \$18.00/SF

**Taxes & Operating:** \$17.52/SF

Operating costs, tax estimates and rental ranges are based on 2024 figures and are subject to change.

**AVAILABLE IMMEDIATELY**



## OPPORTUNITY

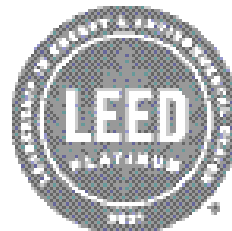
**Suite 700 - 11,665 SF**

**Suite 1730 - 3,001 SF**

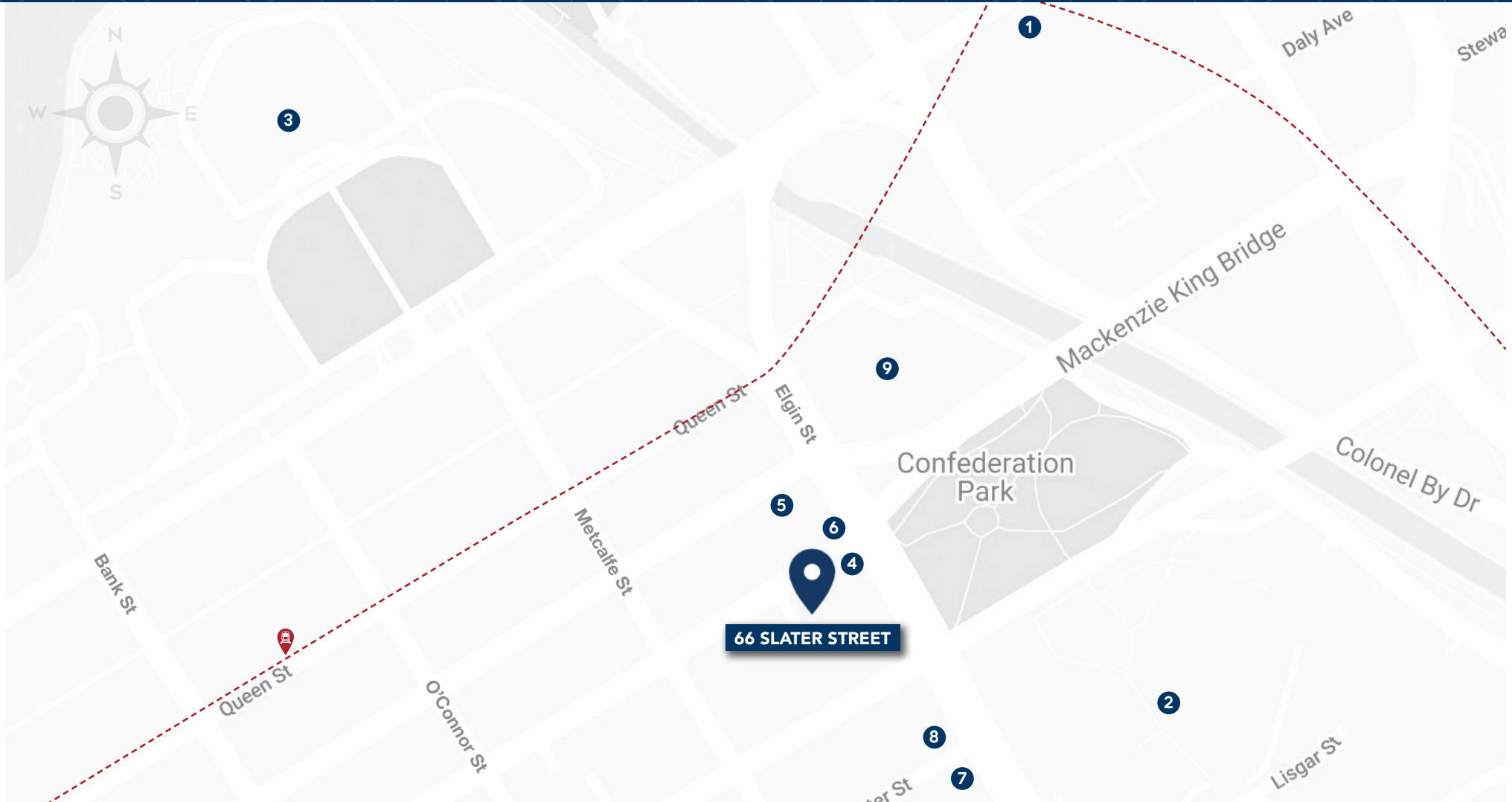
**Suite 2200 - 11,666 SF**

## HIGHLIGHTS

- ✓ Located on the main downtown transitway corridor and steps from future LRT station
- ✓ High profile corner of Elgin St. Slater St.
- ✓ Easily accessible from the Queensway and Kichi Zibi Mikan Parkway
- ✓ On-site, underground parking available
- ✓ Close to downtown amenities including hotels, banking, Rideau Centre shops, Elgin Street restaurants and more



# AREA MAP



**66 SLATER STREET**

- 1 CF Rideau Centre
- 2 Ottawa City Hall
- 3 Parliament Hill
- 4 Grill 41
- 5 Tim Hortons
- 6 Starbucks
- 7 Brown's Social House
- 8 Beckta Dining & Wine
- 9 National Arts Centre

**66 SLATER STREET**  
Ottawa, Ontario

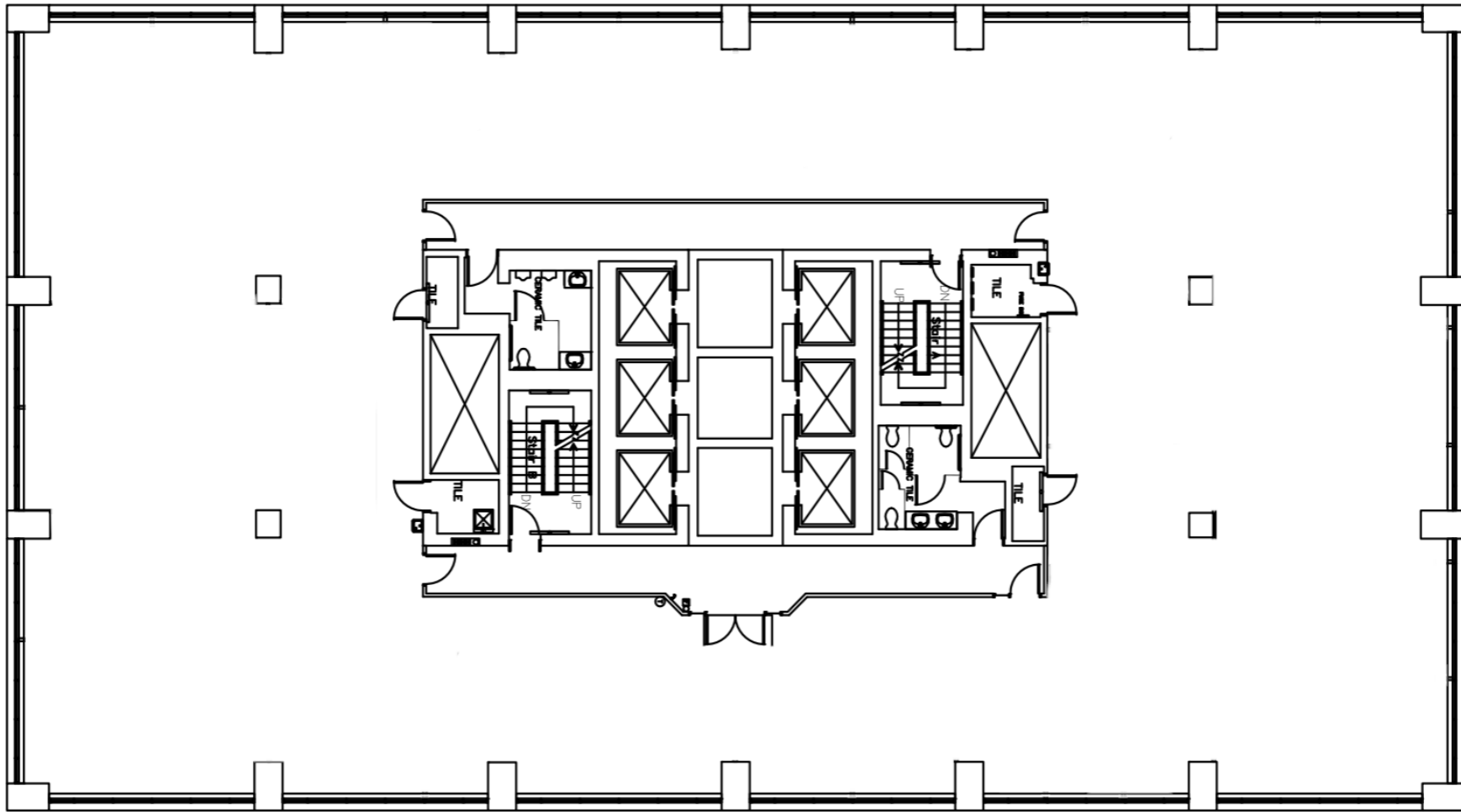
# 66

# SLATER STREET

Ottawa, Ontario

## SUITE 700

11,665 SF



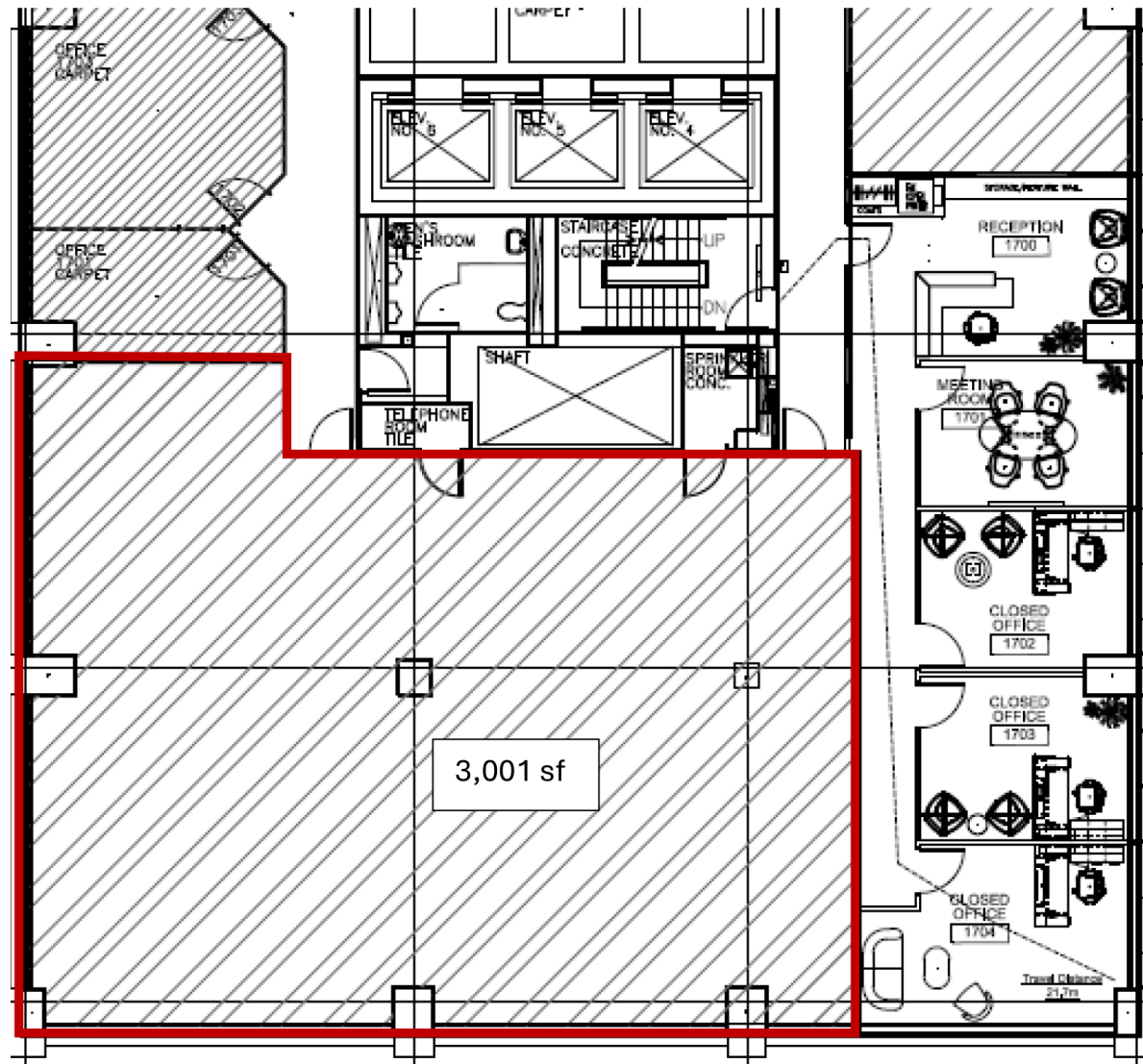
# 66

# SLATER STREET

Ottawa, Ontario

## SUITE 1730

3,001 SF



## SUITE 2200

11,666 SF

