

# 18370

## BURBANK BLVD.

## TARZANA, CA



**LEE & ASSOCIATES**  
COMMERCIAL REAL ESTATE SERVICES

**TODD WUSCHNIG**

PRINCIPAL

818.933.0301

twuschnig@lee-re.com

DRE #01367230

**JENNIFER DONALDSON**

PRINCIPAL

818.933.0347

jdonaldson@lee-re.com

DRE #01317737

All information furnished regarding the property is from sources deemed reliable, but no warranty or representation is made as to the accuracy thereof. This information is submitted subject to errors, omissions, change of price or terms, prior sale or lease, or withdrawal without notice. No liability of any kind is to be imposed on the broker herein.

# 18370

## BURBANK BLVD.

### PROPERTY DETAILS

#### Available:

Suite 310:	502	SF
Suite 405:	891	SF
Suite 614:	4,450	SF

**Lease Rate:** Negotiable

**Parking:** FREE Tenant Parking



**PREMIER LOCATION:** Located on Providence Medical Center Campus



Covered & Surface Parking  
in Secured Lot



On-site Starbucks



Immediate Access to 101 Freeway



Many Amenities  
within walking distance



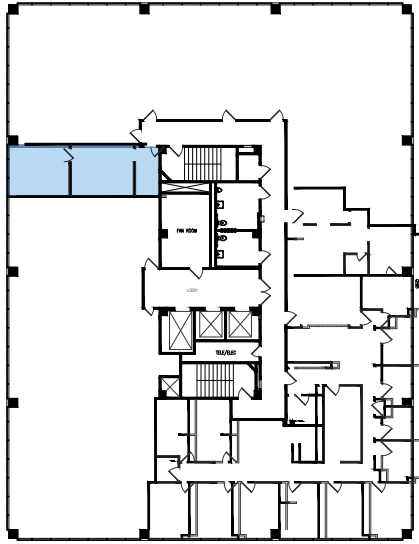
# 18370

BURBANK BLVD.



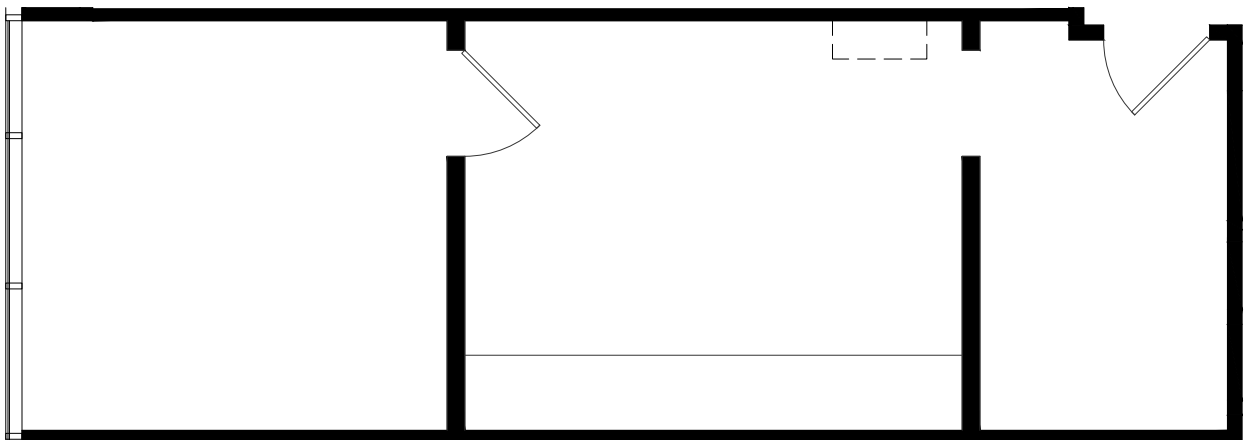
# 18370

BURBANK BLVD.



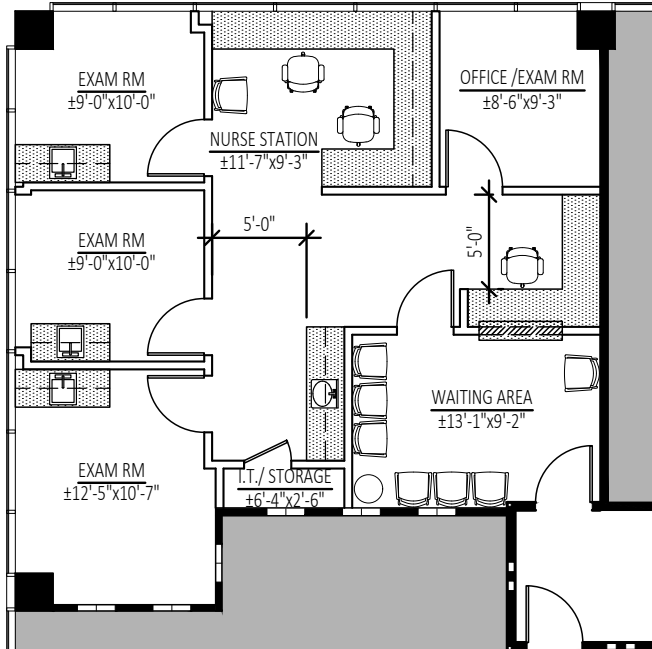
## Suite 310

502 SF



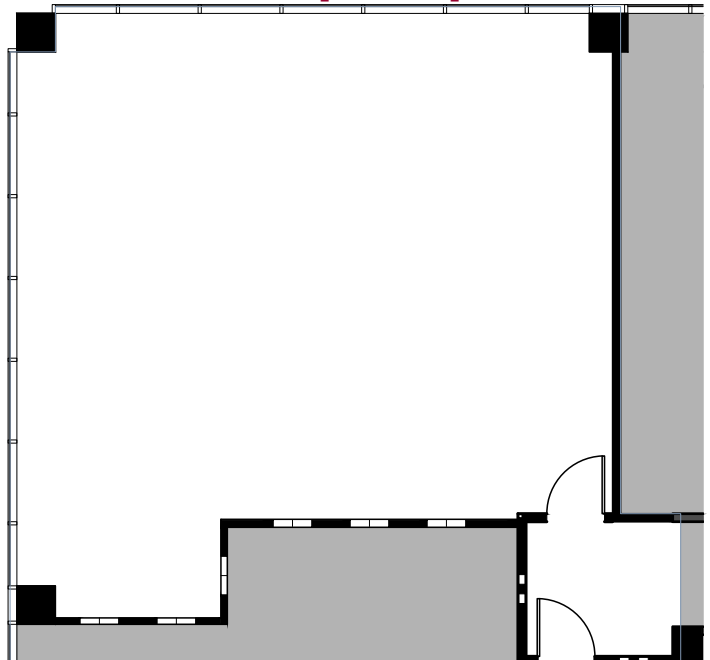
# 18370 BURBANK BLVD.

## Hypothetical Layout



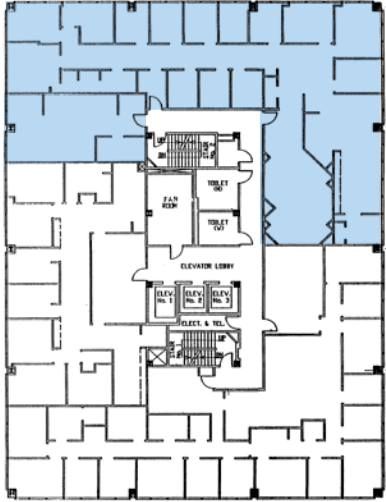
## Suite 405 891 SF

## Open Space Blank

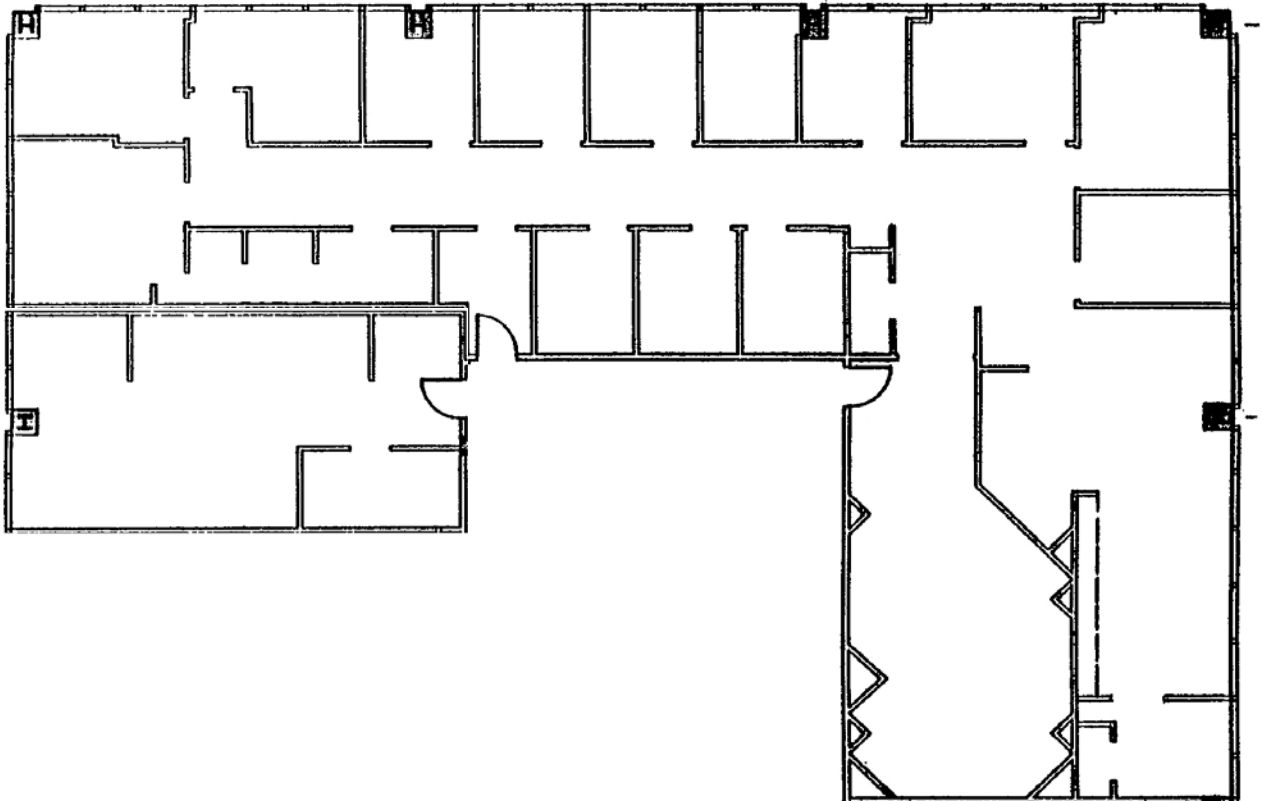


# 18370 BURBANK BLVD.

**LEE &  
ASSOCIATES**  
COMMERCIAL REAL ESTATE SERVICES



**Suite 614**  
4,450 SF



# 18370

## BURBANK BLVD.

**LEE & ASSOCIATES**  
COMMERCIAL REAL ESTATE SERVICES



**LEE & ASSOCIATES**  
COMMERCIAL REAL ESTATE SERVICES

**TODD WUSCHNIG**  
PRINCIPAL  
818.933.0301  
twuschnig@lee-re.com  
DRE #01367230

**JENNIFER DONALDSON**  
PRINCIPAL  
818.933.0347  
jdonaldson@lee-re.com  
DRE #01317737

All information furnished regarding the property is from sources deemed reliable, but no warranty or representation is made as to the accuracy thereof. This information is submitted subject to errors, omissions, change of price or terms, prior sale or lease, or withdrawal without notice. No liability of any kind is to be imposed on the broker herein.