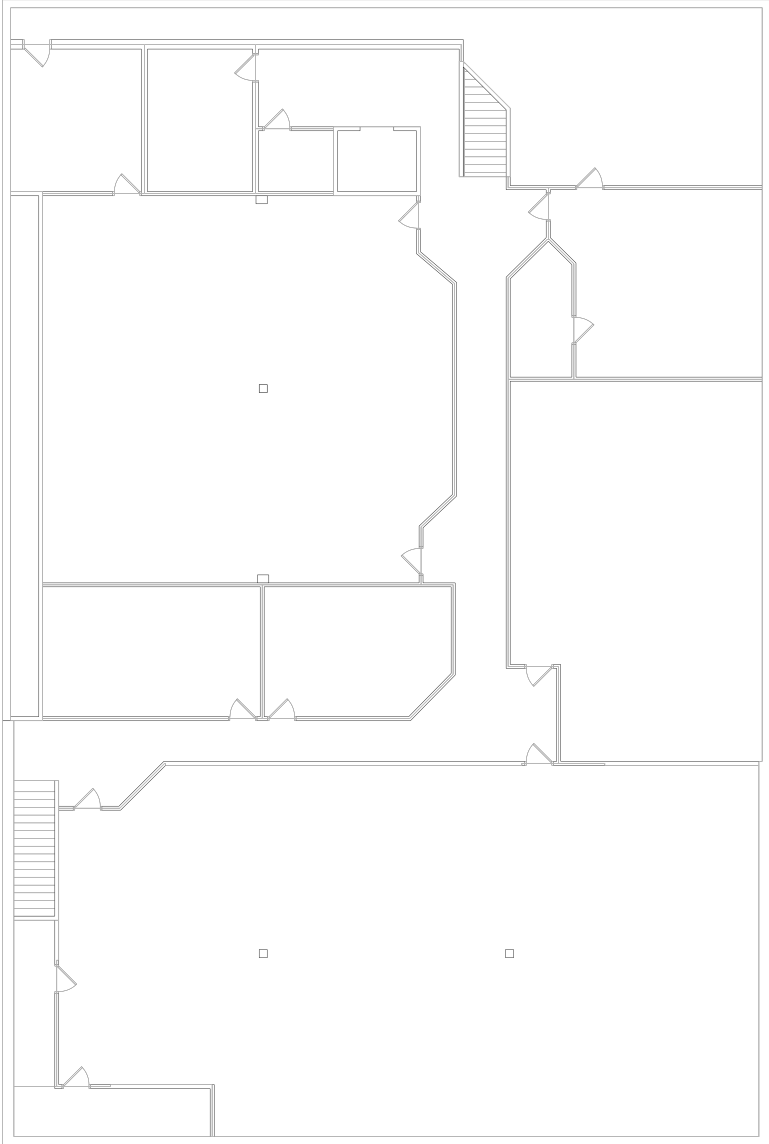
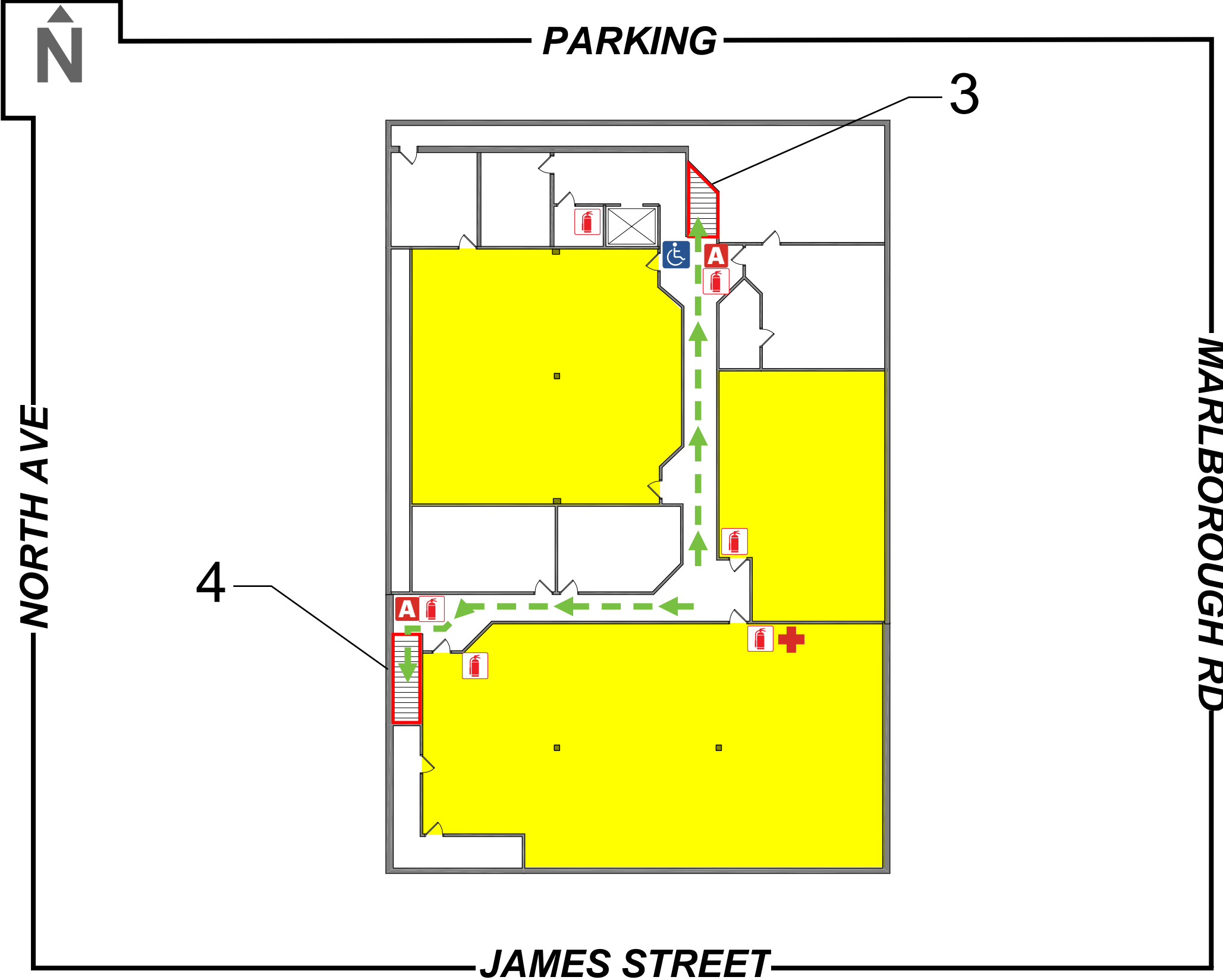


2449 James Street Annex Lower Level



NY432, Lower Level
NY432-2459 James Street
2459 James Street
Syracuse, NY

EVACUATION PLAN - LOWER LEVEL



CALL 911 FIRE/POLICE/MEDICAL



**IN CASE OF AN EMERGENCY,
PULL FIRE ALARM, USE EXIT STAIRS,
DO NOT USE ELEVATOR
FOLLOW EVACUATION ROUTE TO
EMERGENCY EXIT**

Alarm will make a horn sound. Strobe lights will flash.

KEY

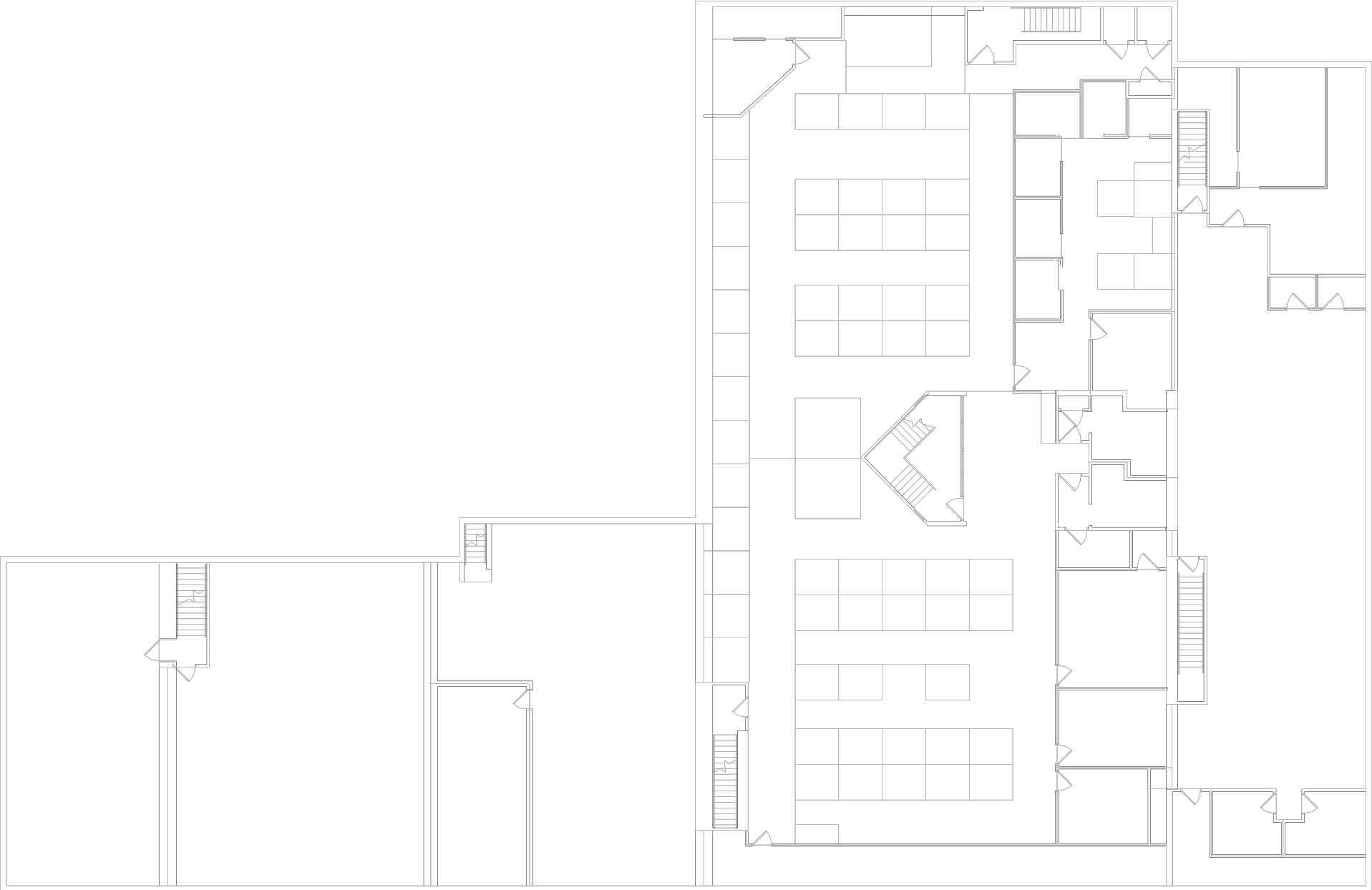
- You Are Here
- Shelter Location
- Evacuation Route #
- Fire Extinguisher
- First Aid Kit
- Stairwell
- Fire Alarm Pull Station

PERSONS WITH DISABILITIES

Shall proceed to the nearest designated area, call 911, report location and await assistance.

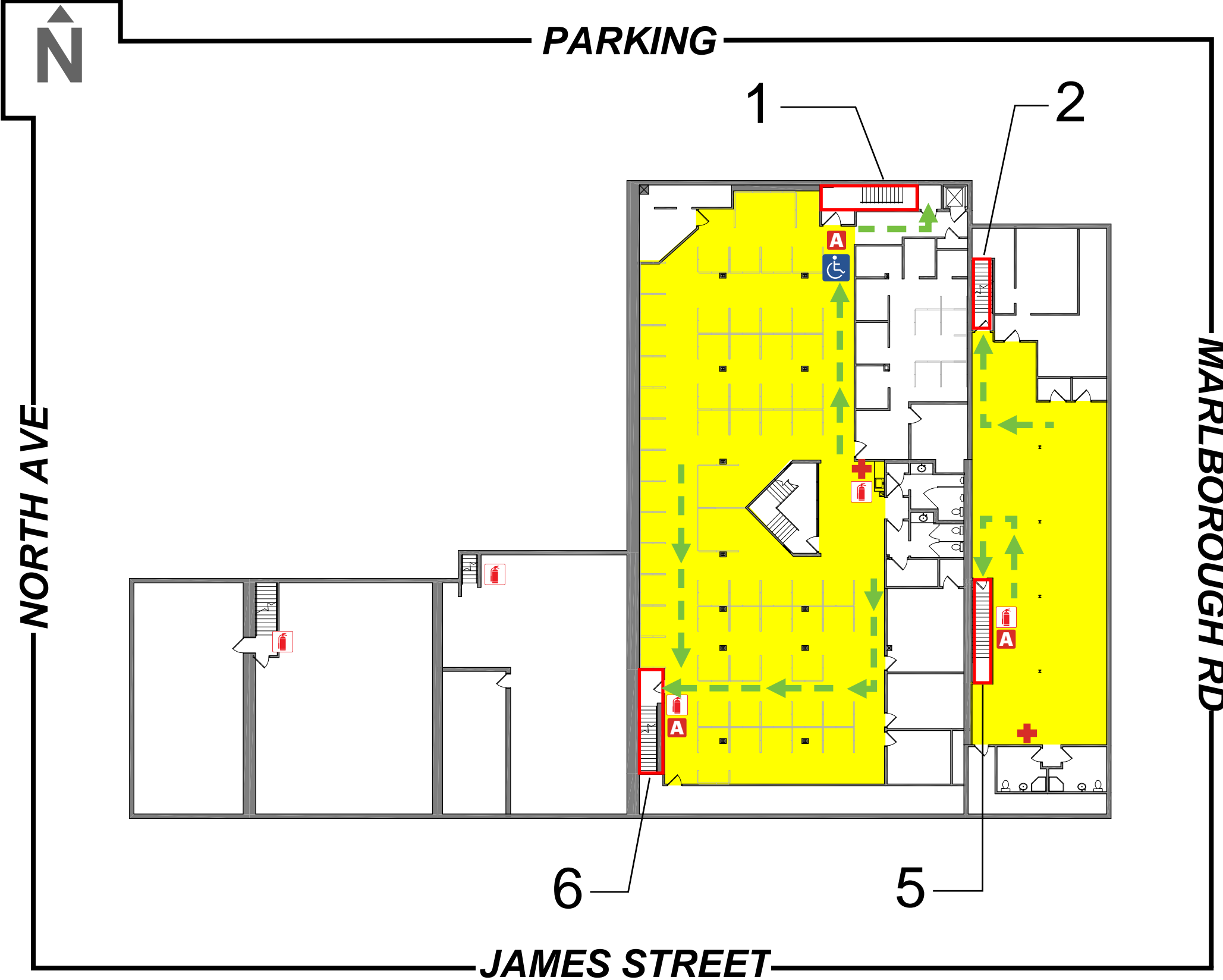
2425 JAMES STREET, SYRACUSE, NY

2425 James Street Main Lower Level



NV432, Lower Level
NY432-2425 James Street
2425 James Street
Syracuse, NY

EVACUATION PLAN - LOWER LEVEL



CALL 911 FIRE/POLICE/MEDICAL



**IN CASE OF AN EMERGENCY,
PULL FIRE ALARM, USE EXIT STAIRS,
DO NOT USE ELEVATOR
FOLLOW EVACUATION ROUTE TO
EMERGENCY EXIT**

Alarm will make a horn sound. Strobe lights will flash.

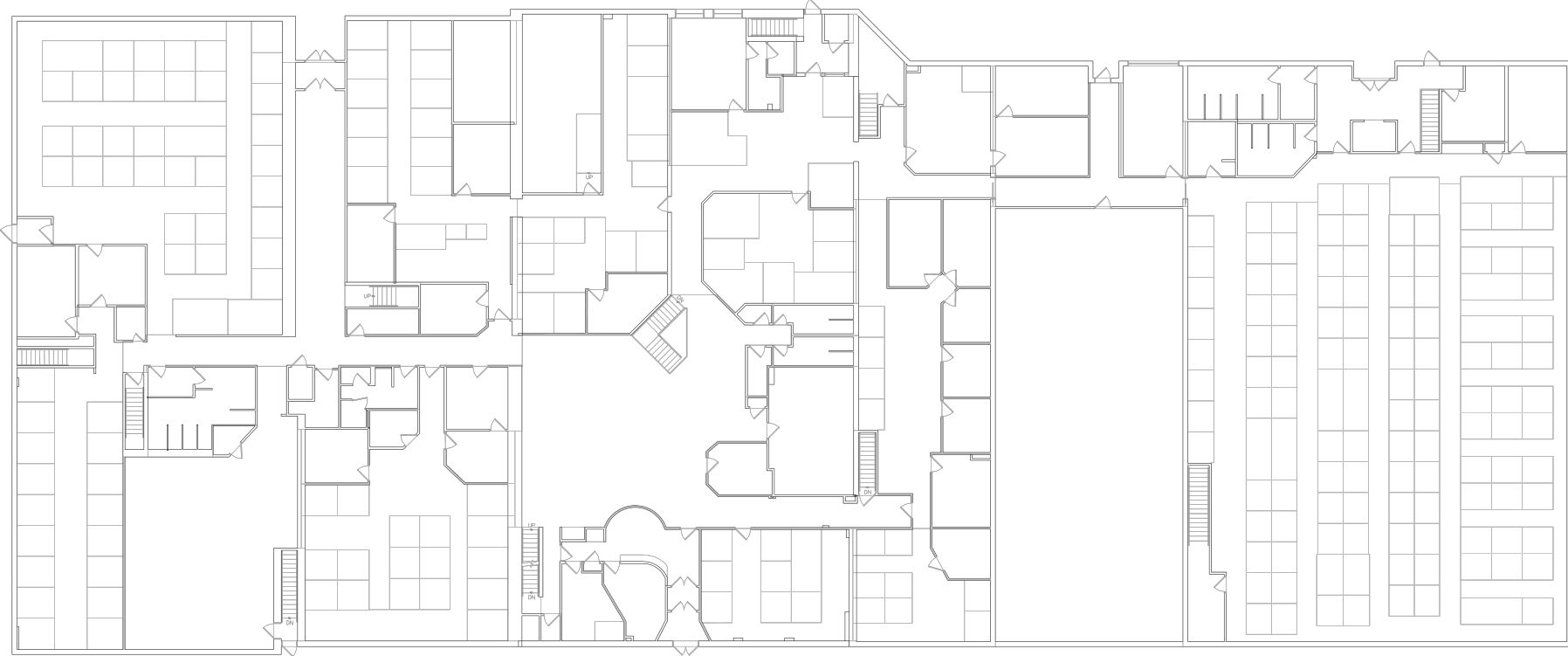
KEY

- You Are Here
- Shelter Location
- Evacuation Route
- Fire Extinguisher
- First Aid Kit
- Stairwell

PERSONS WITH DISABILITIES

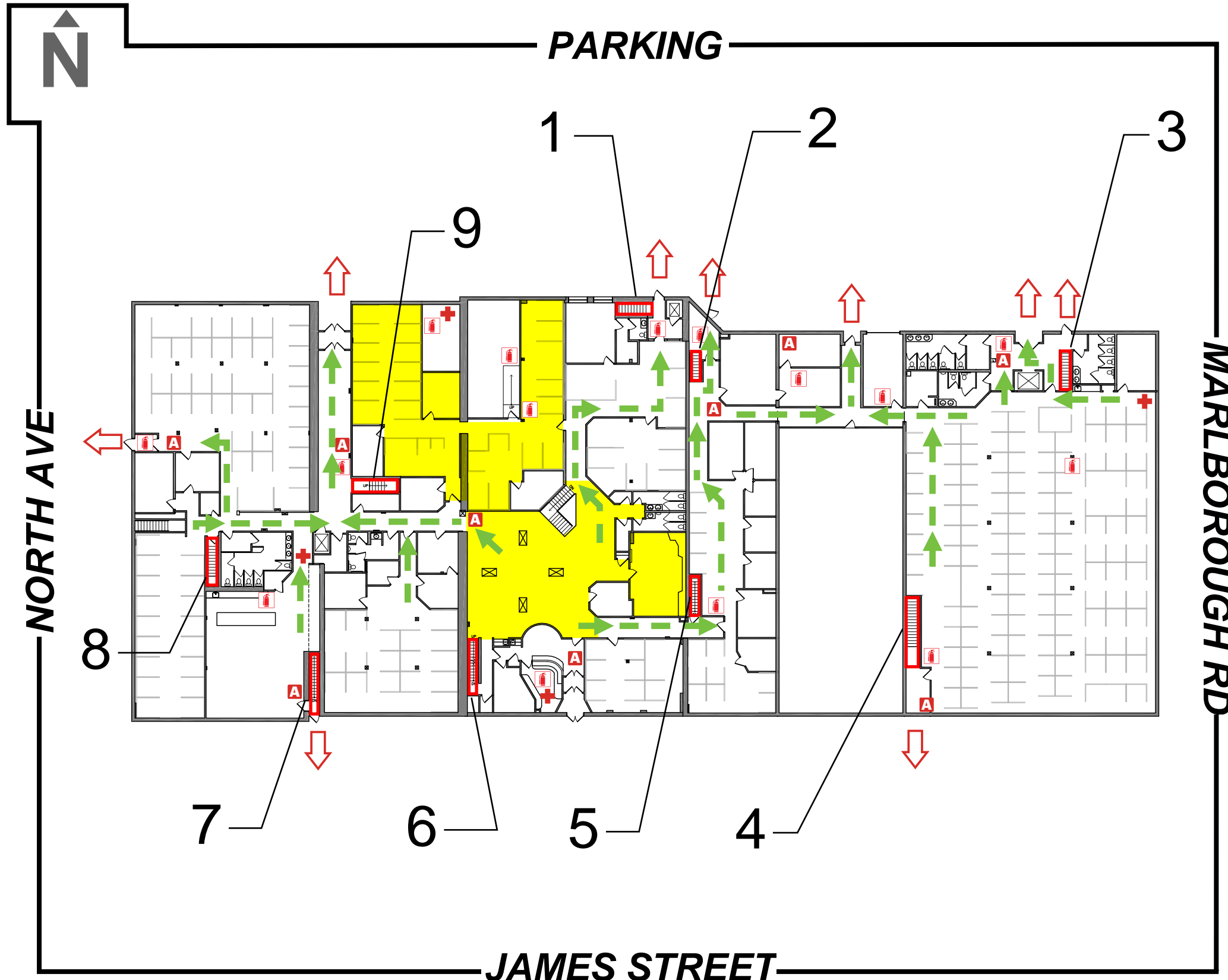
Shall proceed to the nearest designated area, call 911, report location and await assistance.

2425 James Street 1st Floor



NW432, 1st Floor
NW432-2425, 2440, 2459 James Street
2425, 2445, 2459 James Street
Syracuse, NY

EVACUATION PLAN - FLOOR 1



CALL 911 FIRE/POLICE/MEDICAL



**IN CASE OF AN EMERGENCY,
PULL FIRE ALARM, USE EXIT STAIRS,
DO NOT USE ELEVATOR
FOLLOW EVACUATION ROUTE TO
EMERGENCY EXIT**

Alarm will make a horn sound. Strobe lights will flash.

KEY

- | | |
|------------------|-------------------------|
| You Are Here | Fire Extinguisher |
| Emergency Exit | First Aid Kit |
| Shelter Location | Stairwell |
| Evacuation Route | Fire Alarm Pull Station |

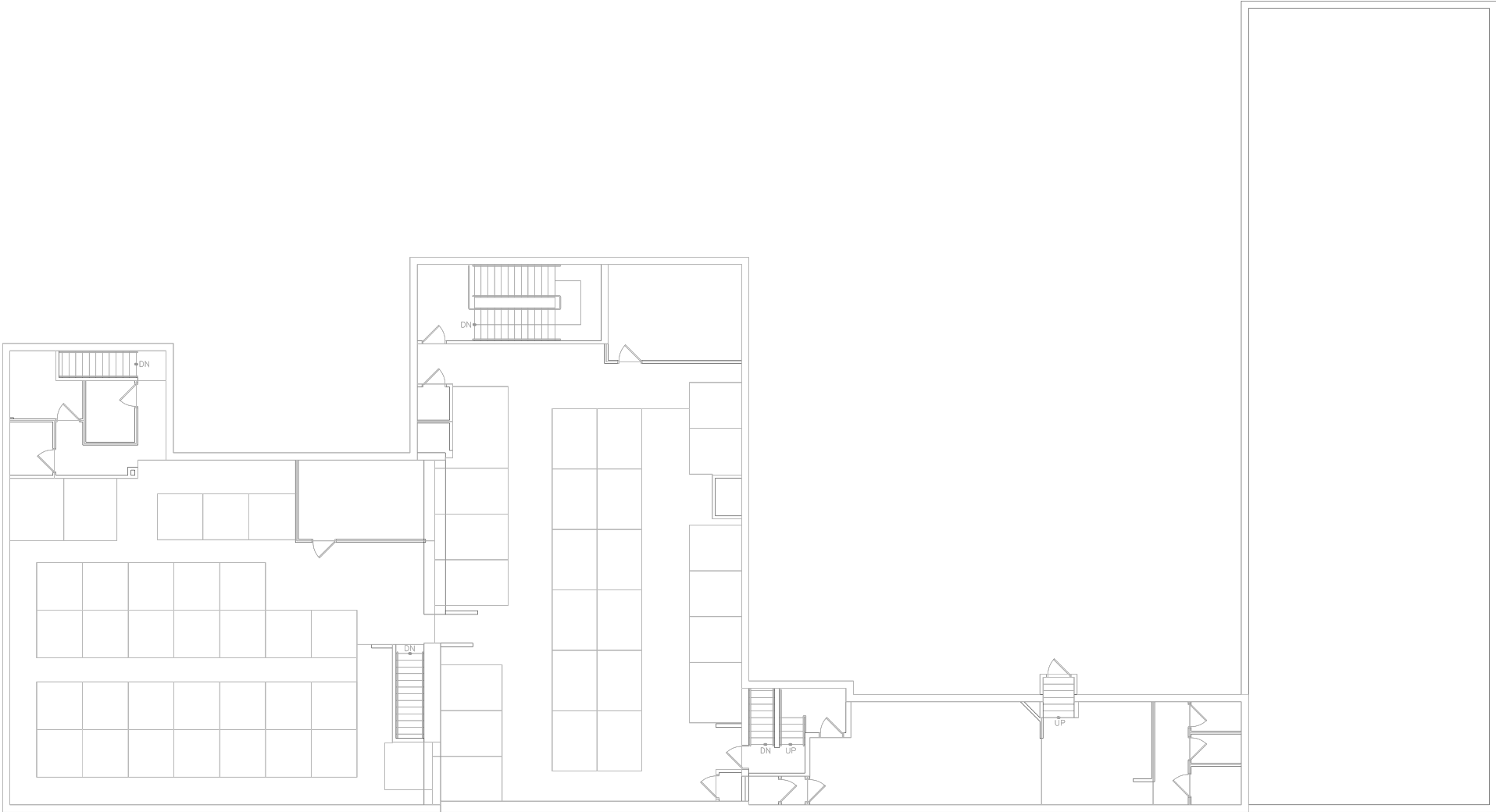
PERSONS WITH DISABILITIES



Shall proceed to the nearest designated area, call 911, report location and await assistance.

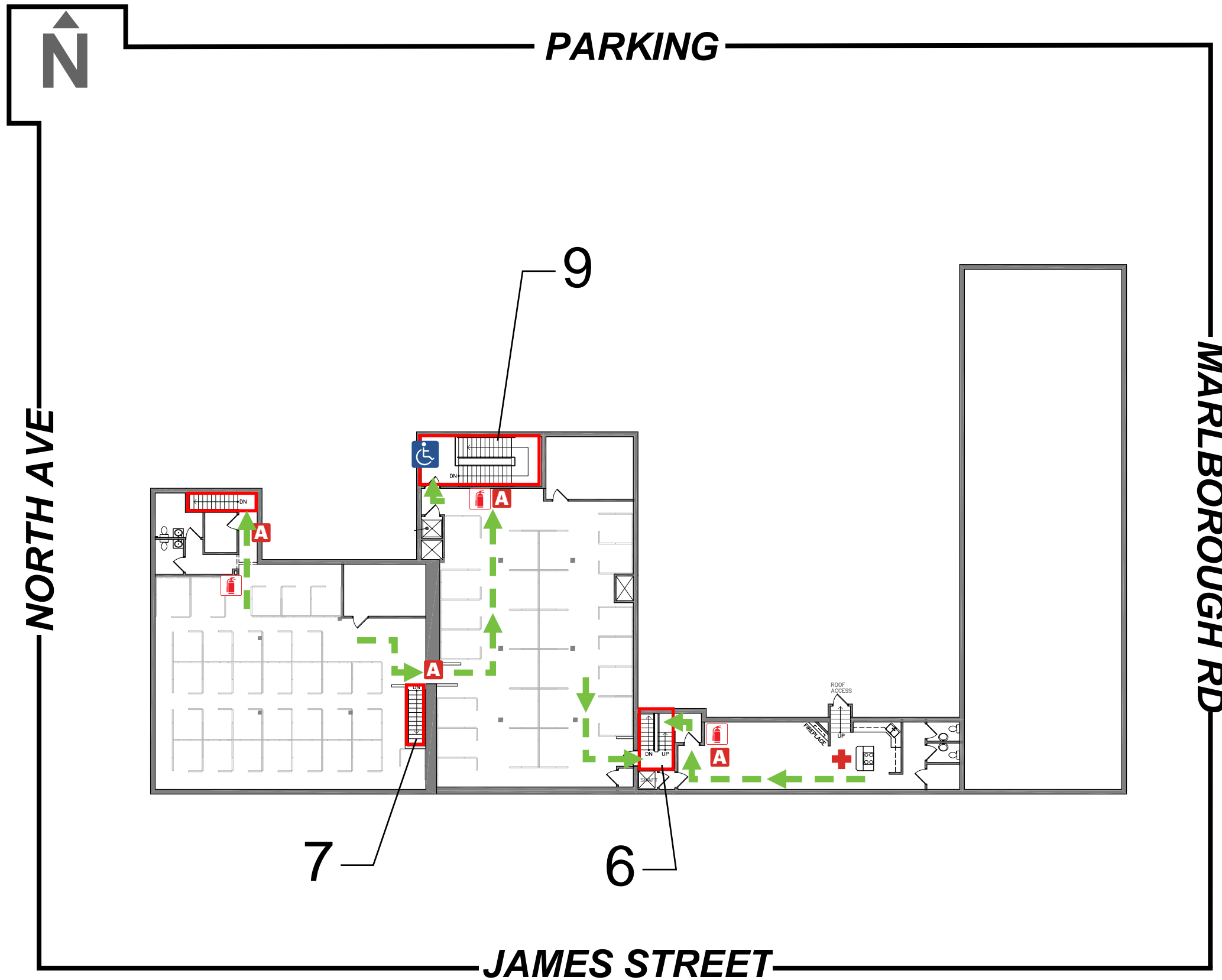
2425 JAMES STREET, SYRACUSE, NY

2425 James Street 2nd Floor



NY432, 2nd Floor
NY432-2425 James Street
2425 James Street
Syracuse, NY

EVACUATION PLAN - FLOOR 2



CALL 911 FIRE/POLICE/MEDICAL



**IN CASE OF AN EMERGENCY,
PULL FIRE ALARM, USE EXIT STAIRS,
DO NOT USE ELEVATOR
FOLLOW EVACUATION ROUTE TO
EMERGENCY EXIT**

Alarm will make a horn sound. Strobe lights will flash.

KEY

- You Are Here
- Shelter Location
- Evacuation Route #
- Fire Alarm Pull Station
- Fire Extinguisher
- First Aid Kit
- Stairwell

PERSONS WITH DISABILITIES

Shall proceed to the nearest designated area, call 911, report location and await assistance.

2425 JAMES STREET, SYRACUSE, NY