

OFFICE TO LET / FOR SALE



1 MITCHELL COURT, CASTLE MOUND WAY, RUGBY, CV23 0UY

For Sale: £700,000

To Rent: £75,000 per annum

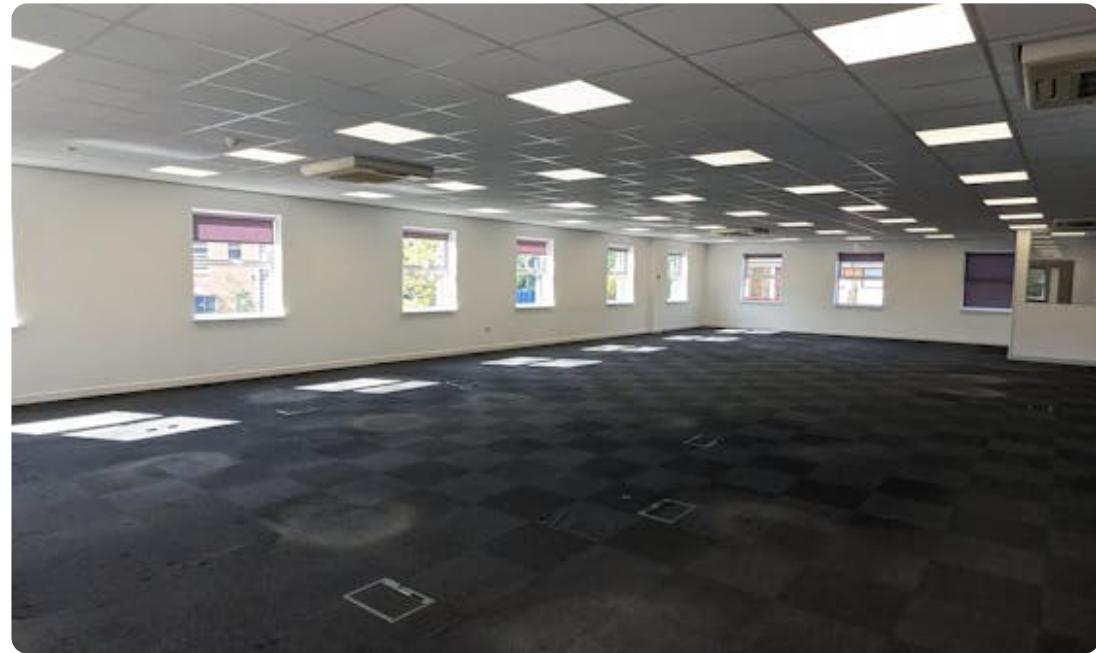
5,001 sq ft (464.61 sq m)

Description

High-quality self-contained office building with 22 car spaces, open planned layout on the first floor and large meeting rooms and breakout spaces on the ground floor. W/C on both ground and first floors. Modern Kitchens and 24-hour security system.

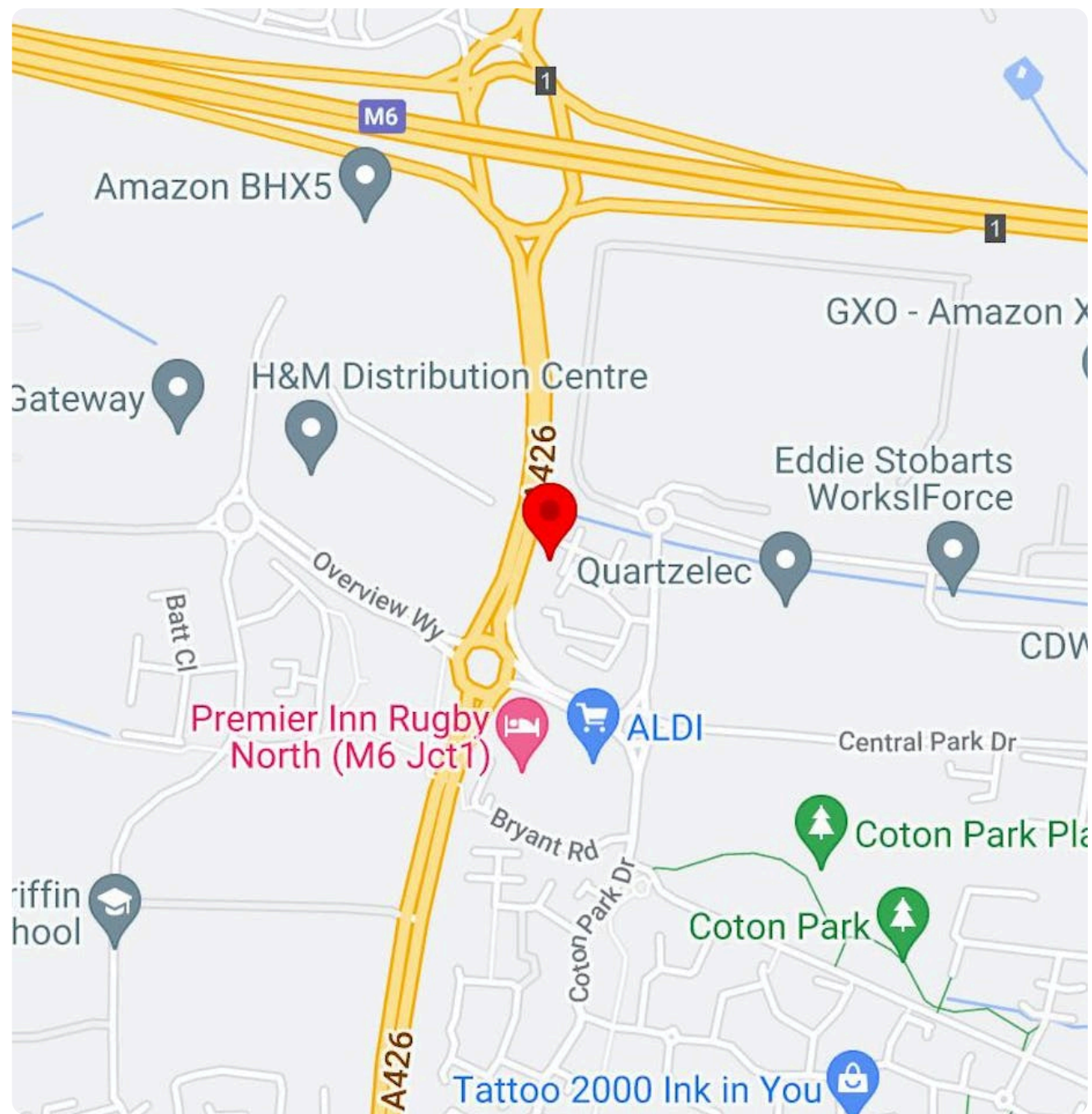
Summary

- Raised Access Floors
- Air-Conditioning
- LED Lighting
- Double Glazed Windows
- 22 Car Parking Spaces



Location

1 Mitchell Court is located on Central Park, a popular business park location and a busy commercial hub. Its central location provides excellent road, rail and airport access across the UK. It is in close proximity to both J1 of M6, J19 & J20 of M1 and J1 of A14. Rugby town and its Station are 2.2 miles to the south, with regular train connections across the UK, including Birmingham, Edinburgh and London, with a fast train to Euston in under an hour. Please note all distances and measurements are approximate and the map location is not the exact location of the property



1 MITCHELL COURT, CASTLE MOUND WAY, RUGBY, CV23 0UY

For Sale: £700,000

To Rent: £75,000 per annum

5,001 sq ft (464.61 sq m)

GALLERY



1 MITCHELL COURT, CASTLE MOUND WAY, RUGBY, CV23 0UY

For Sale: £700,000

To Rent: £75,000 per annum

5,001 sq ft (464.61 sq m)

GALLERY



1 MITCHELL COURT, CASTLE MOUND WAY, RUGBY, CV23 0UY

For Sale: £700,000

To Rent: £75,000 per annum

5,001 sq ft (464.61 sq m)

GALLERY



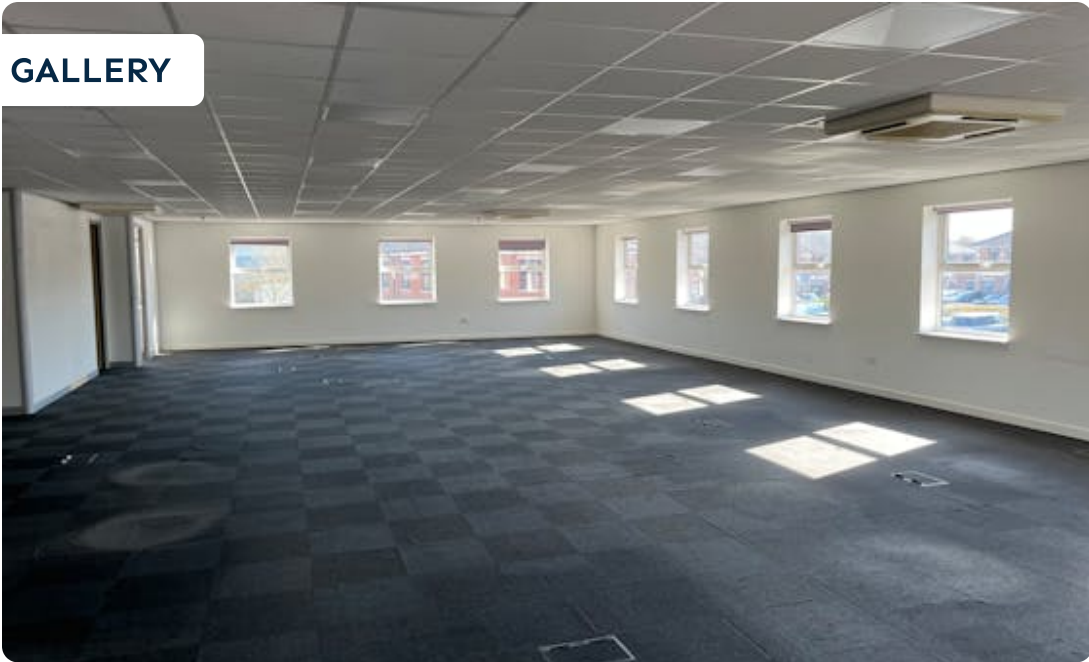
1 MITCHELL COURT, CASTLE MOUND WAY, RUGBY, CV23 0UY

For Sale: £700,000

To Rent: £75,000 per annum

5,001 sq ft (464.61 sq m)

GALLERY



1 MITCHELL COURT, CASTLE MOUND WAY, RUGBY, CV23 0UY

For Sale: £700,000

To Rent: £75,000 per annum

5,001 sq ft (464.61 sq m)

ACCOMMODATION

NAME	SQ FT	SQ M	AVAILABILITY
Unit - Unit 1	5,001	464.61	Available
Total	5,001	464.61	

RENT

£75,000 per annum

BUSINESS RATES

Rateable Value: £73,500

Rates Payable:

This is the rateable value for the property. It is not what you pay in business rates or rent. Your local council uses the rateable value to calculate the business rates bill.

POSSESSION

Available Immediately

ANTI MONEY LAUNDERING

To comply with our legal responsibilities for AntiMoney Laundering, it is necessary to check all parties involved in this transaction. It is the responsibility for parties on both sides to provide information necessary to complete these checks before the deal is completed.

VIEWINGS

Strictly by appointment with the agent
Bromwich Hardy.

CONTACT



Ed Bunbury

07385 662 520

02476308900

ed.bunbury@bromwichhardy.com



Charlie Glover

07806 767 073

02476 308 900

charlie.glover@bromwichhardy.com

Award winning commercial property advice from the team you can trust

- Commercial Agency Advice
- Sales
- Lettings
- Development Advisory
- Complete Property Management Services
- Professional Services
- Lease Renewals
- Rent Reviews
- Valuation Advice

Read our latest Barometer

