

# 295 MADISON AVENUE



WORLD-CLASS OFFICE DESTINATION

OFFICE SPACES FOR LEASE (5,917 SQFT - 15,875 SQFT)

GRAND CENTRAL



#### MIDTOWN ICON

Rising 47 stories at the southeast corner of Madison Avenue and East 41st Street, 295 Madison Avenue offers reimagined, move-in-ready installations with generous natural light and stunning Madison Avenue views.

#### ELEVATED WORKPLACES

Tenants enjoy ultimate flexibility with suites available furnished or unfurnished, alongside landlord-provided bespoke build-outs tailored to their specific operational needs. The building experience is further elevated by a modernized, attended lobby, upgraded destination-dispatch elevators, and a commitment to sustainability evidenced by its LEED O&M certification.

#### CENTRAL ACCESS

Just a block from Grand Central Terminal, the building offers exceptional connectivity, transportation, and nearby parking facilities, with an abundance of dining, hotels, and fitness options in the surrounding neighborhood.

Trains 4, 5, 6, 7, S, B, D, F, M,  
Metro-North, and LIRR

# CENTRAL LOCATION





**BUILDING OVERVIEW**

A cultural icon for  
the dynamic businesses.



**BUILDING SQFT**

407,127 SQFT Rentable

**BUILDING HEIGHT**

538 Feet | 47 Stories

**BUILDING HOURS**

24 Hour Access  
Attended Lobby

**AMENITIES**

3rd Floor Amenity Center: Board Room,  
Lounge, and Pantry.

**RETAILERS IN THE BUILDING**

Barney Brown, Vivibowl,  
Escape Game, Shogun

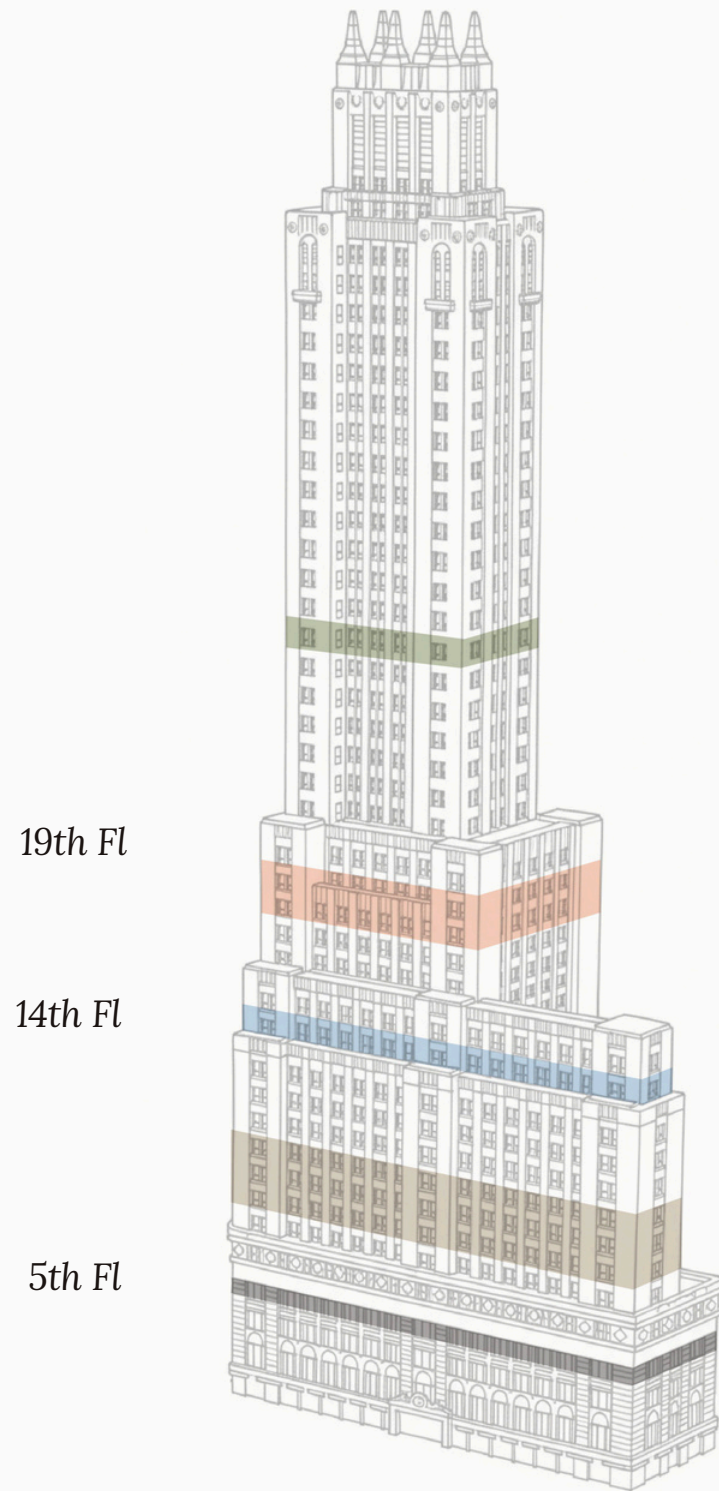
MIDTOWN ICON

Originally designed in the Art Deco style in 1929 by Charles F. Moyer, 295 Madison Avenue has since been transformed to blend modern design with a deep sensitivity to the neighborhood's historic fabric. The building offers state-of-the-art, move-in-ready office spaces featuring abundant natural light, flexible layouts, and panoramic views of Madison Avenue. Every suite can be fully customized, providing tenants with a refined, efficient, and prestigious workspace.



295  
MADISON  
AVENUE

RSF



FLOOR	
ENTIRE 5 <sup>TH</sup> FLOOR	15,875 RSF
SUITE 1407	5,917 RSF
ENTIRE 19 <sup>TH</sup> FLOOR	7,900 RSF

AVAILABILITY



295  
MADISON  
AVENUE

Entire 5th Floor  
15,875 RSF



295  
MADISON  
AVENUE



Entire 5th Floor  
15,875 RSF



# 295 MADISON AVENUE

## Entire 5th Floor

SIZE

15,875 RSF

FEATURES

- 17 Offices
- 1 Conference Room
- 47 Workstations
- 2 Phone Rooms
- Reception



295  
MADISON  
AVENUE

Suite 1407  
5,917 RSF



# 295 MADISON AVENUE

VIRTUAL TOUR

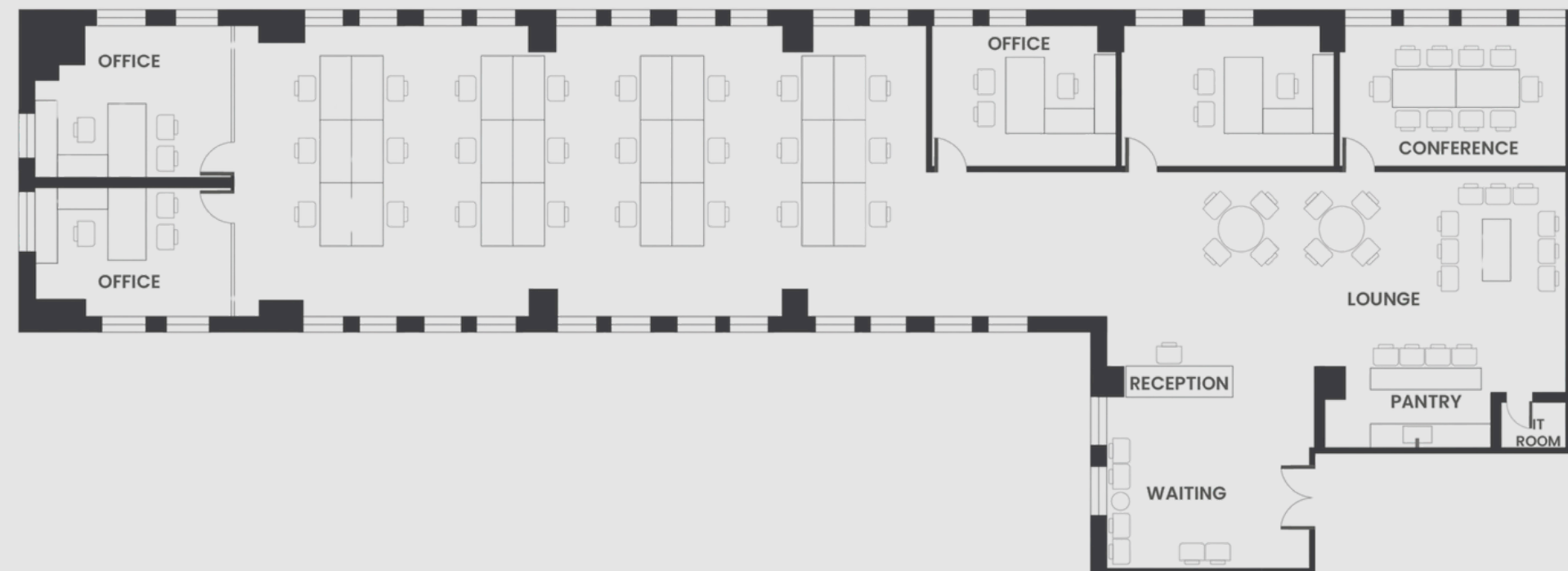
## Suite 1407

SIZE \_\_\_\_\_

5,917 RSF

FEATURES \_\_\_\_\_

- 4 Offices
- 1 Conference Room
- 30 Workstations
- Pantry



295  
MADISON  
AVENUE

Entire 19<sup>th</sup> Floor  
7,900 RSF

RENDERING



# 295 MADISON AVENUE

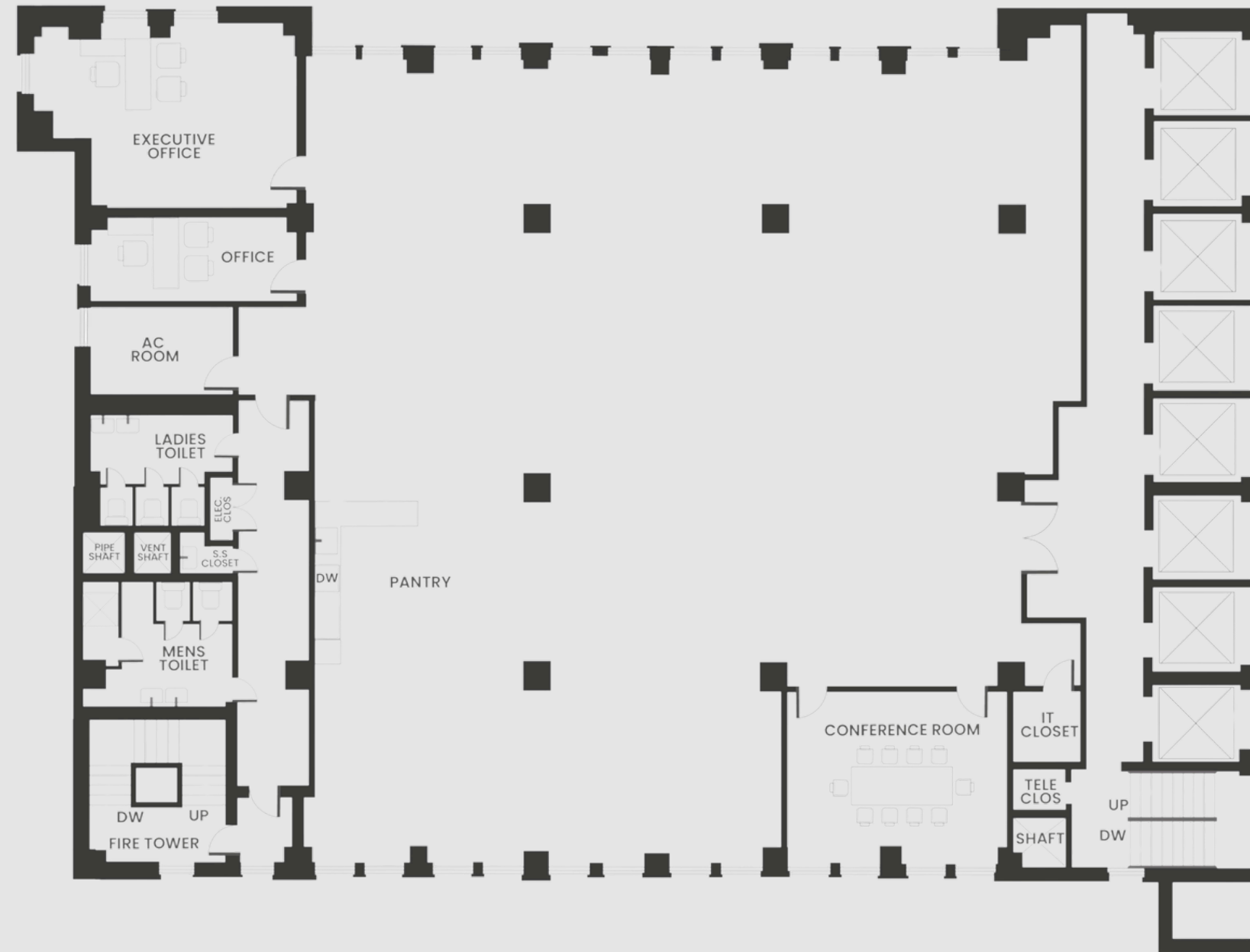
Entire 19<sup>th</sup> Floor

SIZE

7,900 RSF

FEATURES

- 1 Executive Office
- 1 Office
- 1 Conference Room
- Pantry
- Private Restrooms





NEIGHBORHOOD

# 295 MADISON AVENUE



## FINE DINING

- Bryant Park Grill
- Cipriani Dolci
- Le Pavillion
- Fasano
- Grand Brasserie
- Grand Central Oyster Bar

## CASUAL DINING

- Cava
- Sweetgreen
- Los Tacos No.1
- Naya
- Shake Shack
- Chipotle

## RETAIL

- Apple Store
- Adidas
- Charles Tyrwhitt
- Sephora
- Warby Parker
- Barnes & Noble

- Equinox
- Crunch Fitness
- Blink Fitness
- The Training Lab
- BNL Fitness



# 295 MADISON AVENUE

## HEADQUARTERS

100 Wall Street, Second Floor  
New York, NY 10005  
[www.platinumcommercialnyc.com](http://www.platinumcommercialnyc.com)

## MIDTOWN OFFICE

295 Madison Avenue, 10th Floor  
New York, NY 10017



**Steven Evans**  
(646) 533-9589  
[sevans@pp-nyc.com](mailto:sevans@pp-nyc.com)



**Emre Bozkurt**  
(518) 505-0518  
[ebozkurt@pp-nyc.com](mailto:ebozkurt@pp-nyc.com)



**Joseph Zalta**  
(718) 419-1112  
[jzalta@pp-nyc.com](mailto:jzalta@pp-nyc.com)



**Eric Meyer**  
(914) 391-4318  
[emeyer@pp-nyc.com](mailto:emeyer@pp-nyc.com)

## CONTACT

