

8450 W 3rd St.
LOS ANGELES, CA 90048
RESTAURANT FOR LEASE

OFFERING MEMORANDUM



Area Highlights



CityStreet Commercial is pleased to present 8450 W. 3rd St. to the Los Angeles market. This prime 2nd gen restaurant sits along the popular stretch of boutique retailers and restaurants in the Beverly Grove neighborhood along West 3rd St. The area is a popular destination for locals and tourists alike with high foot traffic and an amazing demographic and mix of single-family homes. Neighboring tenants include The Little Door, Bacari, Joans on 3rd, Pali House, Phoenix and many more.

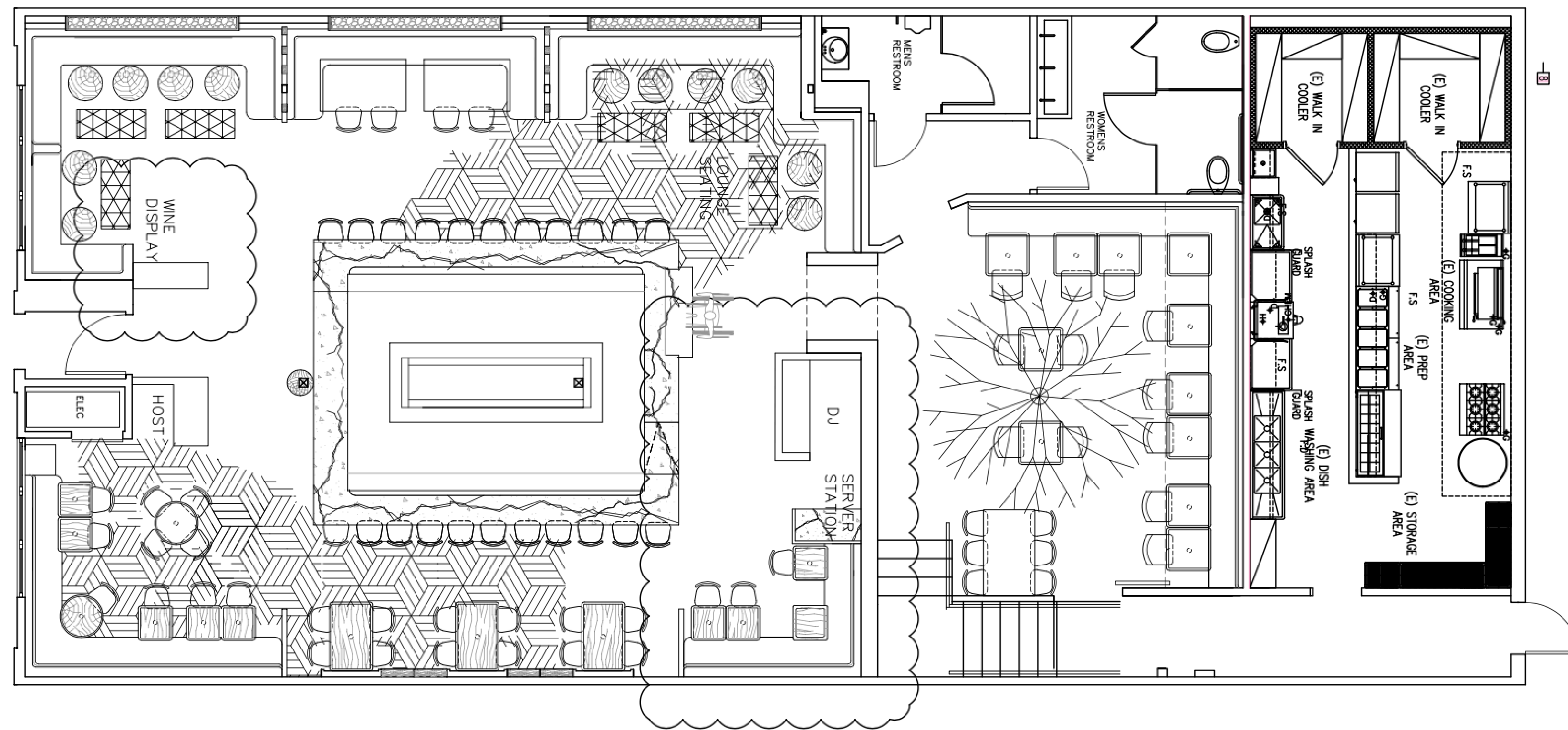
Deal Points

- Asking Rent: \$29,500/month
- Size: Appx 4,250 SF (total)
 - Ground Floor: 3,280 SF
 - Mezzanine: 970 SF
- Lease: New direct lease with landlord
- No Key money
- Former tenant invested in excess of \$5 million for buildout
- Parking: 1 ADA space with loading, 1 standard space, metered street parking available
- Type-47 grandfathered liquor license with no operating restrictions
- Permitted Hours of Operation: 2AM, 7 days per week

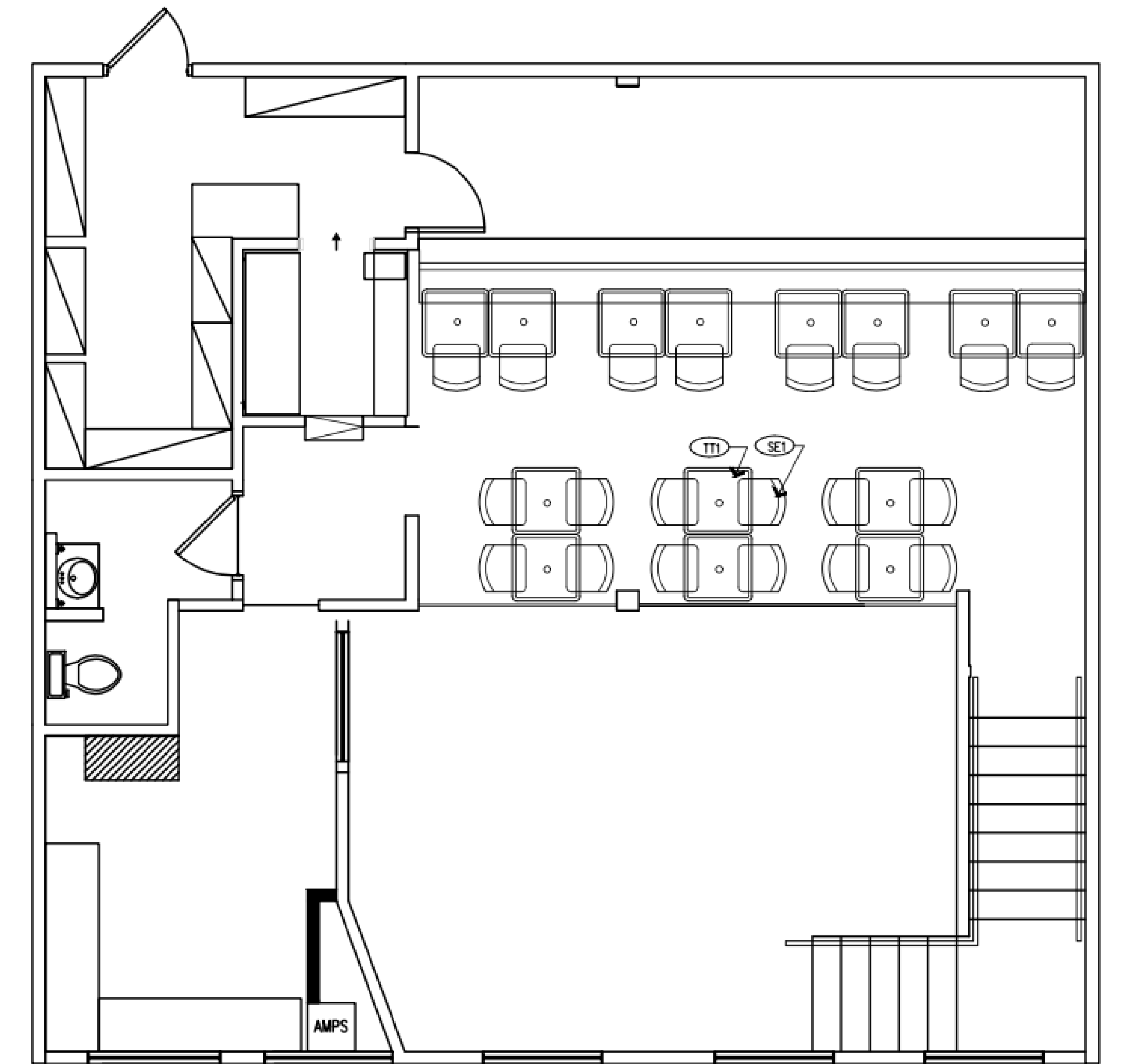


Floor Plan

GROUND FLOOR PLAN



MEZZANINE FLOOR PLAN



CITYSTREET
COMMERCIAL

Property Photos



Neighboring Tenants

THE LITTLE DOOR



JOAN'S
ON THIRD



LUCKY X STRIKE



8450 W 3rd St.

LOS ANGELES, CA 90048

RESTAURANT FOR LEASE

Elan Kermani

President

+1 310 749 0140

elan@citystreetcre.com

CA License No. 01441510

Maribel Sandoval

Associate

+1 310 272 3933

maribel@citystreetcre.com

CA License No. 01988717

Disclaimer

This document has been prepared by CityStreet Commercial for advertising and general information only. CityStreet Commercial makes no guarantees, representations or warranties of any kind, expressed or implied, regarding the information including, but not limited to, warranties of content, accuracy and reliability. Any interested party should undertake their own inquiries as to the accuracy of the information. CityStreet Commercial excludes unequivocally all inferred or implied terms, conditions and warranties arising out of this document and excludes all liability for loss and damages arising there from. This publication is the copyrighted property of CityStreet Commercial and/or its licensor(s). ©2025 All rights reserved.