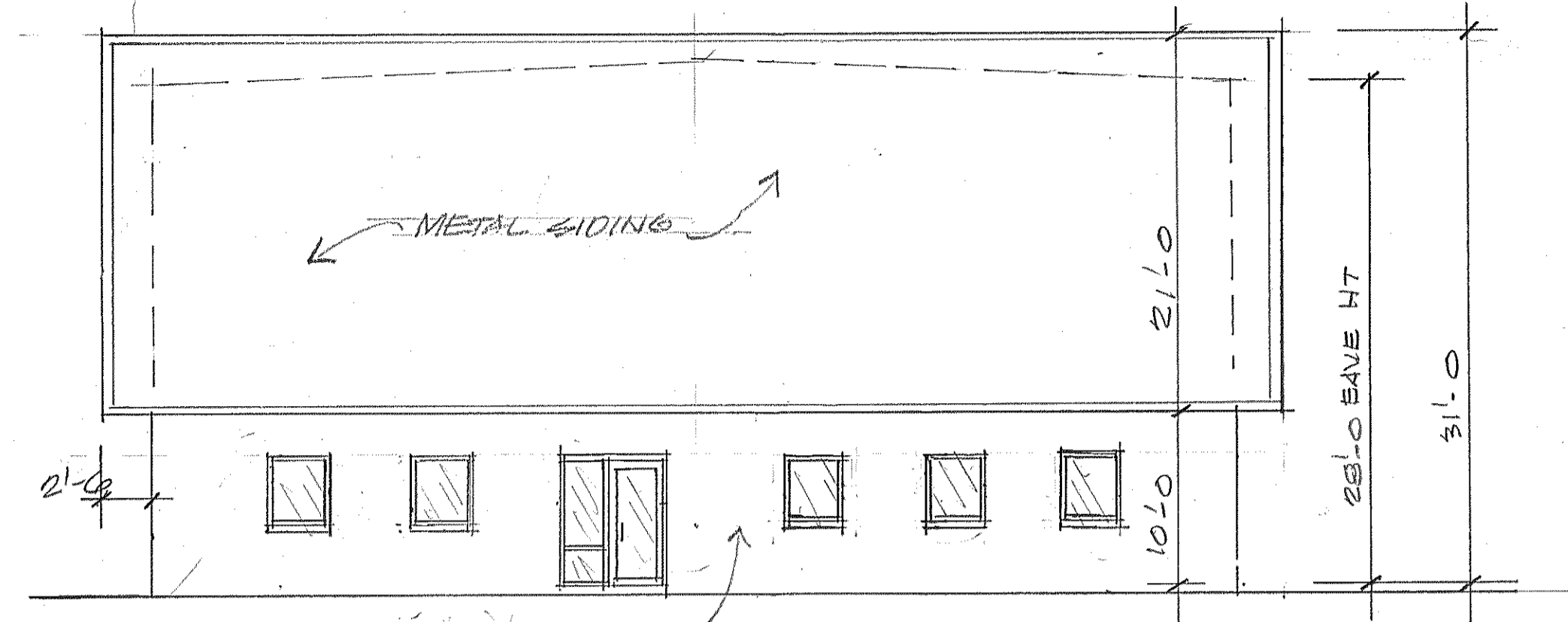
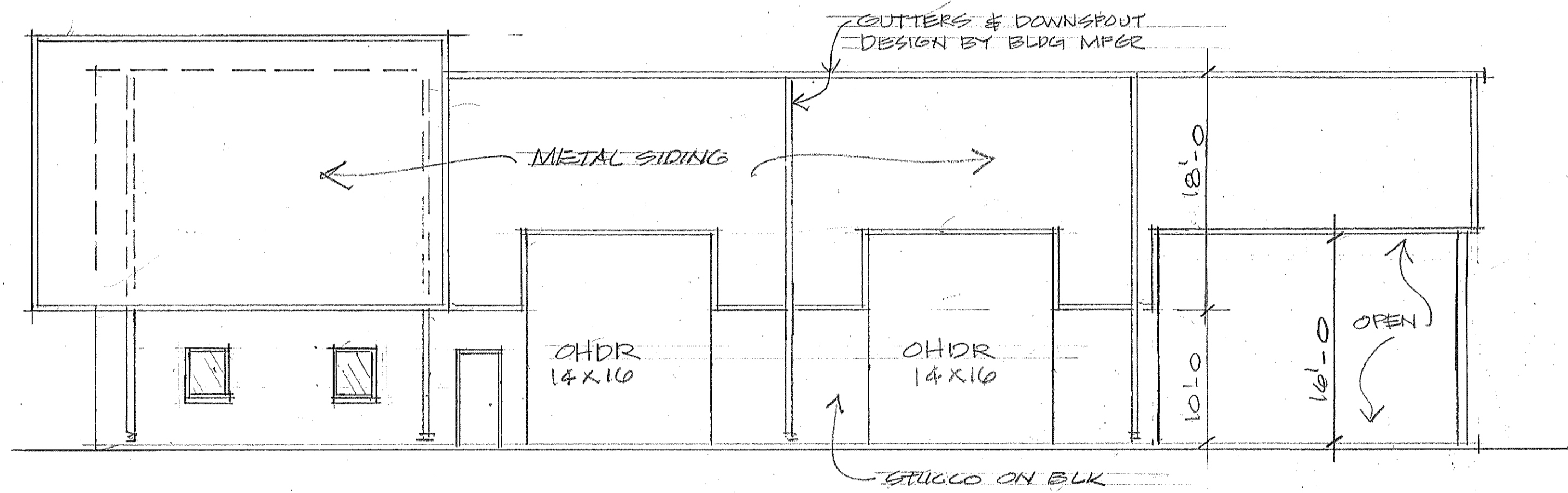


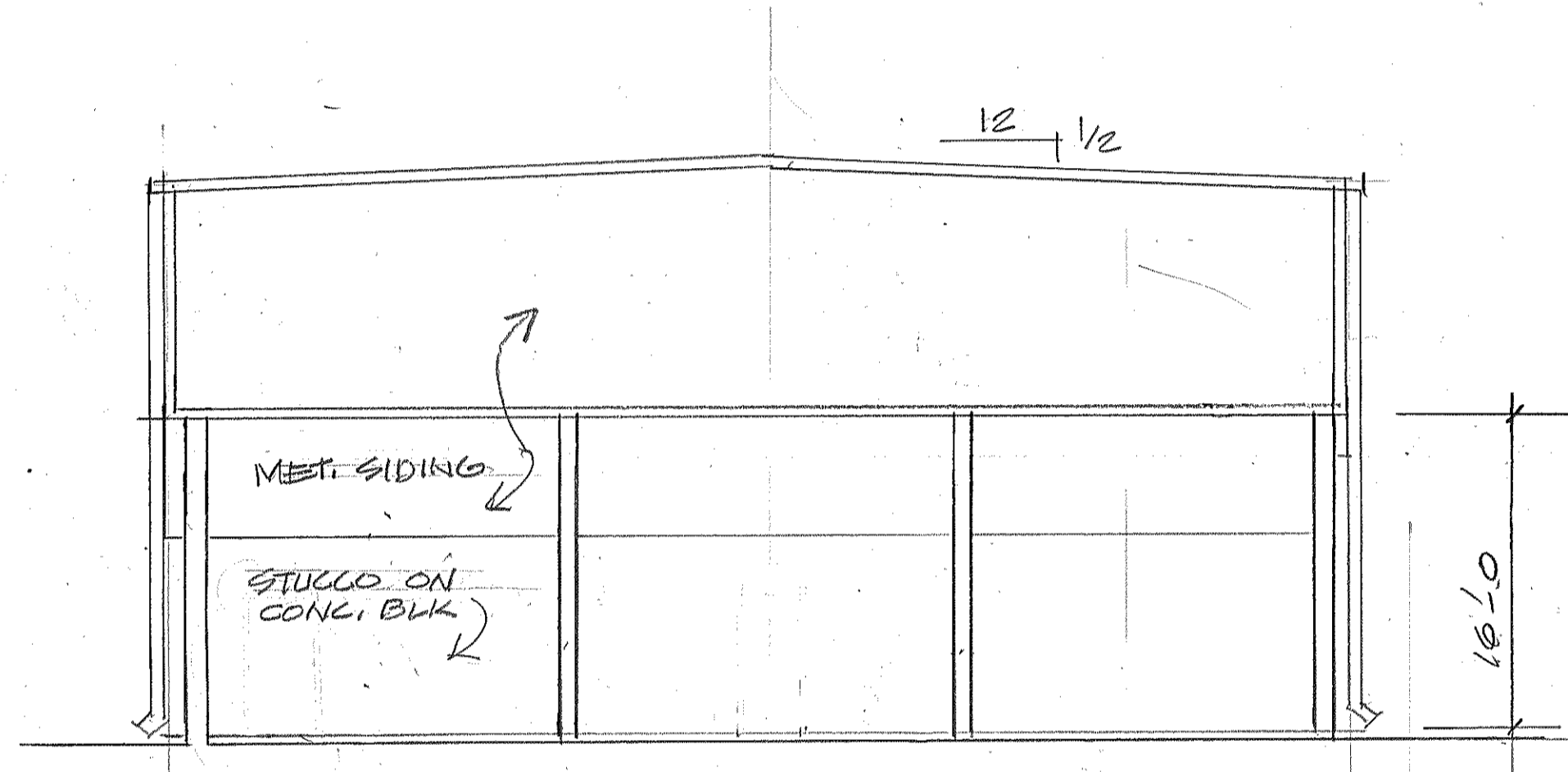
NORTH ELEVATION
1/8" = 1'-0"



WEST ELEVATION
1/8" = 1'-0"



SOUTH ELEVATION
1/8" = 1'-0"



EAST ELEVATION
1/8" = 1'-0"

REVISED
2/18/13
3/5/13
4/9/13
4/10/13

HERBERT L BANKS, ARCHITECT FLA.REG.4313	HERBERT L BANKS ARCHITECT, P.A. WILSHIRE PLAZA WILSHIRE BLVD., SUITE 232 CASSELBERRY, FL 32707 TEL: 407-678-7745 FAX: 407-678-1242	BUILDING FOR
		BRONTO'S SKYLIFT, INC.
DATE		TAFT CO, ORANGE COUNTY, FLORIDA
		JOB NO. 1304
		DATE 1/15/13
		SHEET 8 OF 8