

**±51,450 SF  
FOR LEASE**

# WAREHOUSE/DISTRIBUTION BUILDING

820 A S. VINTAGE AVENUE | ONTARIO, CA 91761



820 A S. VINTAGE AVE

NOT AVAILABLE

VINTAGE AVENUE

**DON KAZANJIAN**  
President & Principal  
dkazanjian@lee-assoc.com  
D 909.373.2929  
DRE #00860886

**JOE LAHLOU**  
Associate  
jlahlou@lee-assoc.com  
D 909.373.2710  
DRE #02221608

**LEE & ASSOCIATES - ONTARIO**  
3535 Inland Empire Boulevard | Ontario, CA 91764  
(909) 989-7771 | lee-associates.com  
Corporate ID: 00976995

**LEE & ASSOCIATES**  
COMMERCIAL REAL ESTATE SERVICES

# PROPERTY PROFILE

**±51,450 SF WAREHOUSE/DISTRIBUTION BUILDING**  
820 A S. VINTAGE AVENUE | ONTARIO, CA 91761



## PROPERTY FEATURES

- |                                |  |   |
|--------------------------------|--|---|
| » ±51,450 SF Available         | » (12) Dock High Doors (12 EOD Levelers) | » LED Lighting                                      |
| » ±2,850 SF of Office Space    | » (1) Ground Level Doors                 | » 120' Concrete Truck Loading Areas (Fully Secured) |
| » 30' Minimum Clear Height     | » 62 Parking Spaces                      | » Rail Serviceable                                  |
| » ESFR Sprinkler System (K-25) | » 50' x 52' Bay Spacing                  | » 400 Amps, 277/480 Volt Power (Expandable)         |

**DON KAZANJIAN**  
President & Principal  
dkazanjian@lee-assoc.com  
D 909.373.2929  
DRE #00860886

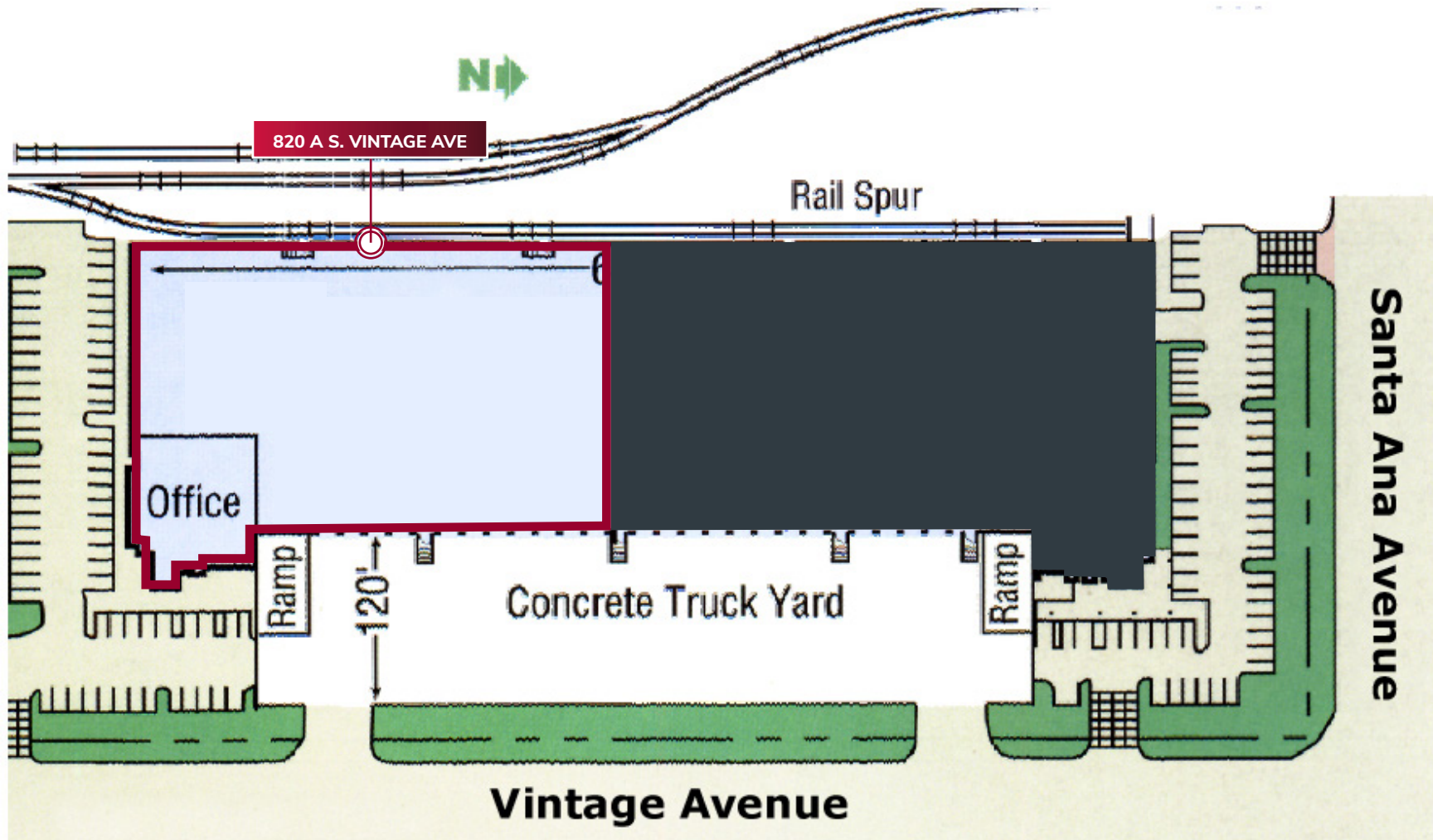
**JOE LAHLOU**  
Associate  
jlahlou@lee-assoc.com  
D 909.373.2710  
DRE #02221608

**LEE & ASSOCIATES - ONTARIO**  
3535 Inland Empire Boulevard | Ontario, CA 91764  
(909) 989-7771 | lee-associates.com  
Corporate ID: 00976995

**LEE & ASSOCIATES**  
COMMERCIAL REAL ESTATE SERVICES

# SITE PLAN

**±51,450 SF WAREHOUSE/DISTRIBUTION BUILDING**  
820 A S. VINTAGE AVENUE | ONTARIO, CA 91761



**DON KAZANJIAN**  
President & Principal  
dkazanjan@lee-assoc.com  
D 909.373.2929  
DRE #00860886

**JOE LAHLOU**  
Associate  
jlahlou@lee-assoc.com  
D 909.373.2710  
DRE #02221608

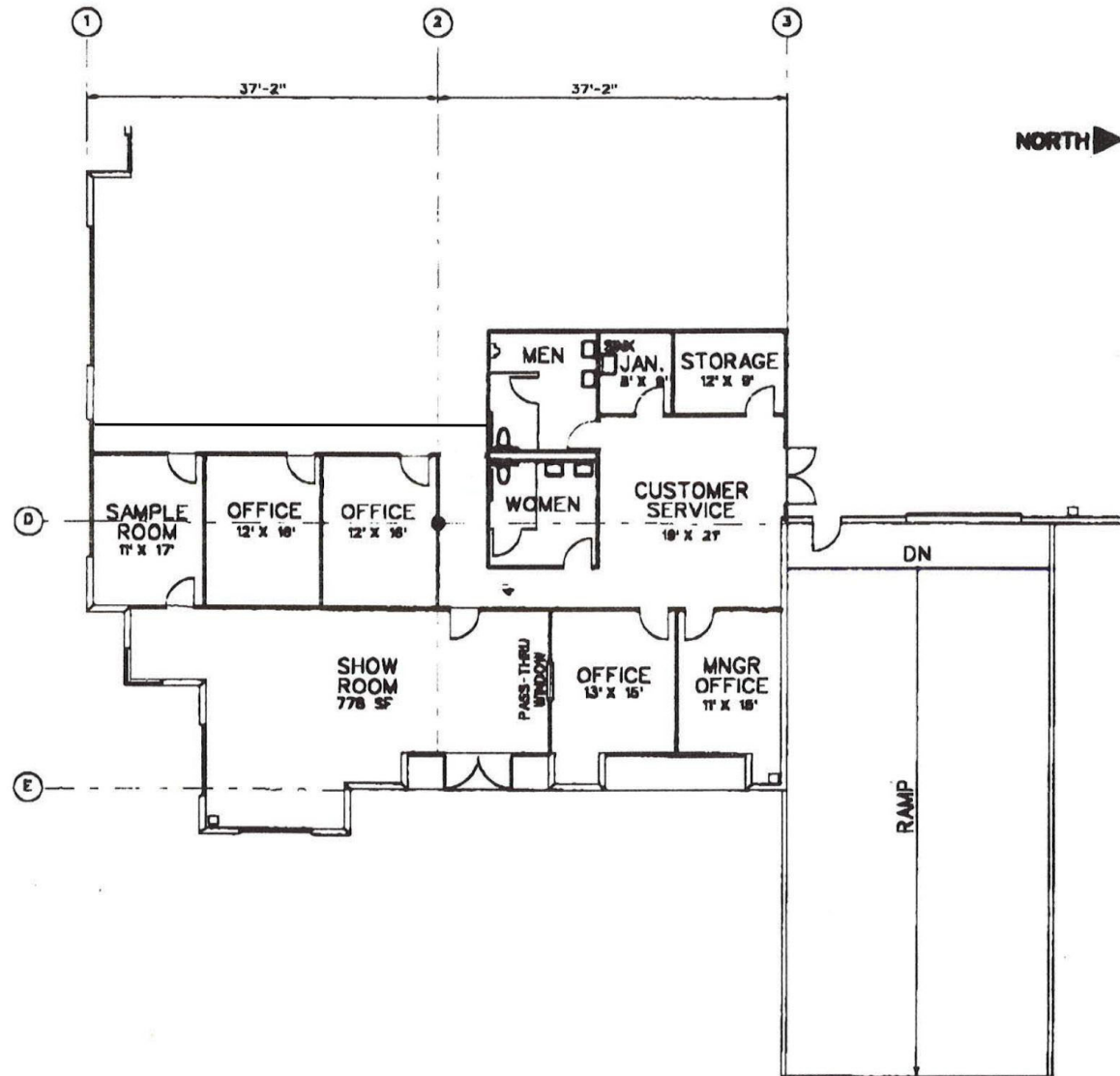
**LEE & ASSOCIATES - ONTARIO**  
3535 Inland Empire Boulevard | Ontario, CA 91764  
(909) 989-7771 | lee-associates.com  
Corporate ID: 00976995

**LEE & ASSOCIATES**  
COMMERCIAL REAL ESTATE SERVICES

# OFFICE FLOOR PLANS

±51,450 SF WAREHOUSE/DISTRIBUTION BUILDING  
820 A S. VINTAGE AVENUE | ONTARIO, CA 91761

OFFICE LAYOUT  
South End



**DON KAZANJIAN**  
President & Principal  
dkazanjan@lee-assoc.com  
D 909.373.2929  
DRE #00860886

**JOE LAHLOU**  
Associate  
jlahlou@lee-assoc.com  
D 909.373.2710  
DRE #02221608

**LEE & ASSOCIATES - ONTARIO**  
3535 Inland Empire Boulevard | Ontario, CA 91764  
(909) 989-7771 | lee-associates.com  
Corporate ID: 00976995

**LEE & ASSOCIATES**  
COMMERCIAL REAL ESTATE SERVICES

# PROPERTY PHOTOS

±51,450 SF WAREHOUSE/DISTRIBUTION BUILDING  
820 A S. VINTAGE AVENUE | ONTARIO, CA 91761



**DON KAZANJIAN**  
President & Principal  
dkazanjan@lee-assoc.com  
D 909.373.2929  
DRE #00860886

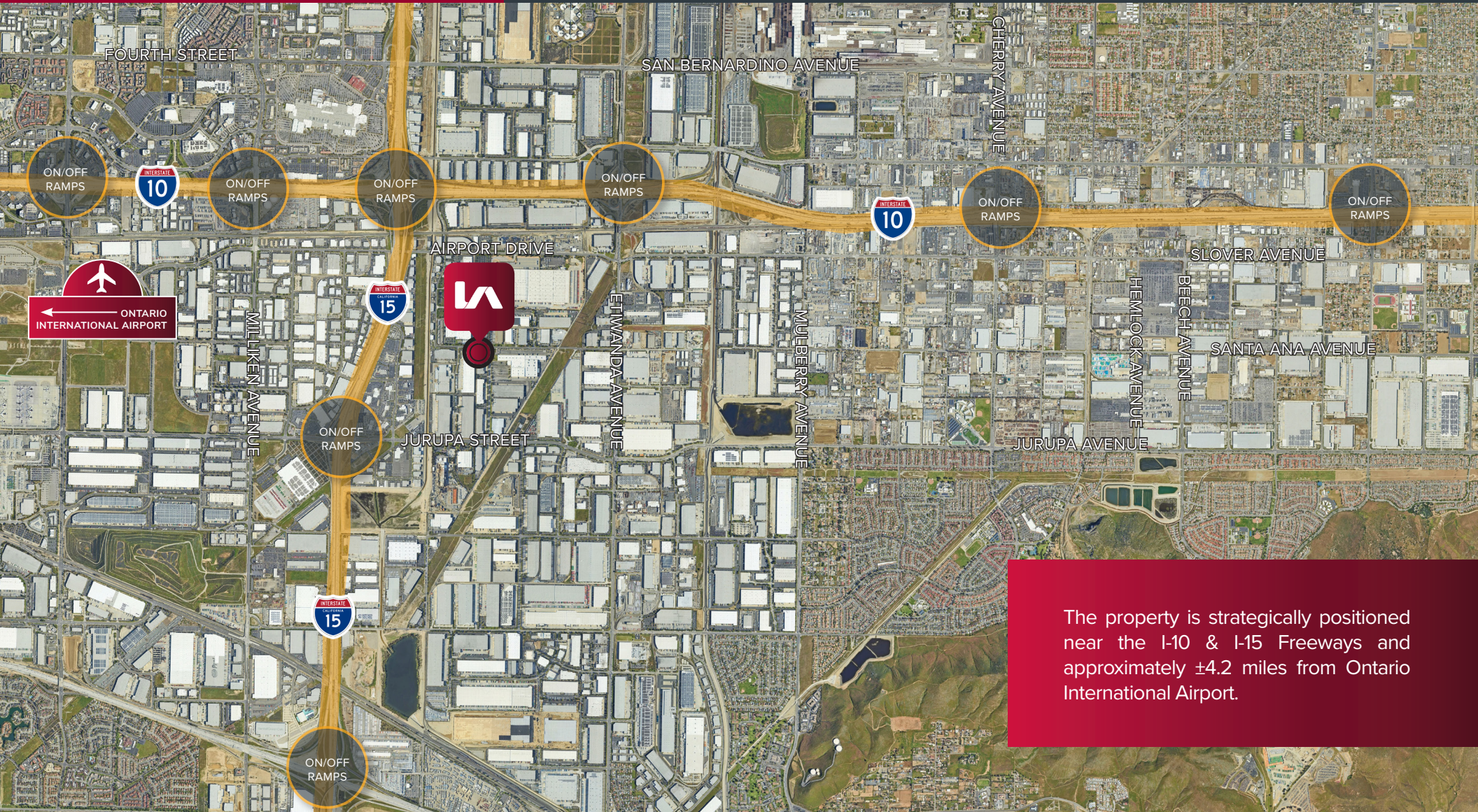
**JOE LAHLOU**  
Associate  
jlahlou@lee-assoc.com  
D 909.373.2710  
DRE #02221608

**LEE & ASSOCIATES - ONTARIO**  
3535 Inland Empire Boulevard | Ontario, CA 91764  
(909) 989-7771 | lee-associates.com  
Corporate ID: 00976995

**LEE & ASSOCIATES**  
COMMERCIAL REAL ESTATE SERVICES

# LOCATION MAP

**±51,450 SF WAREHOUSE/DISTRIBUTION BUILDING**  
820 A S. VINTAGE AVENUE | ONTARIO, CA 91761



The property is strategically positioned near the I-10 & I-15 Freeways and approximately ±4.2 miles from Ontario International Airport.

**DON KAZANJIAN**  
President & Principal  
dkazanjan@lee-assoc.com  
D 909.373.2929  
DRE #00860886

**JOE LAHLOU**  
Associate  
jlahlou@lee-assoc.com  
D 909.373.2710  
DRE #02221608

**LEE & ASSOCIATES - ONTARIO**  
3535 Inland Empire Boulevard | Ontario, CA 91764  
(909) 989-7771 | lee-associates.com  
Corporate ID: 00976995

**LEE & ASSOCIATES**  
COMMERCIAL REAL ESTATE SERVICES

# ±51,450 SF WAREHOUSE/DISTRIBUTION BUILDING

820 A S. VINTAGE AVENUE | ONTARIO, CA 91761

## FOR MORE INFORMATION

### **DON KAZANJIAN**

Senior Vice President  
dkazanjian@lee-assoc.com  
D 909.373.2929  
DRE #00860886

### **JOE LAHLOU**

Associate  
jlahlou@lee-assoc.com  
D 909.373.2710  
DRE #02221608

---

### **LEE & ASSOCIATES - ONTARIO**

3535 Inland Empire Boulevard  
Ontario, CA 91764  
(909) 989-7771  
Corporate ID #00976995

[lee-associates.com](http://lee-associates.com)



COMMERCIAL REAL ESTATE SERVICES  
ONTARIO

All information furnished regarding property for sale, rental or financing is from sources deemed reliable, but no warranty or representation is made to the accuracy thereof and same is submitted to errors, omissions, change of price, rental or other conditions prior to sale, lease or financing or withdrawal without notice. No liability of any kind is to be imposed on the broker herein.