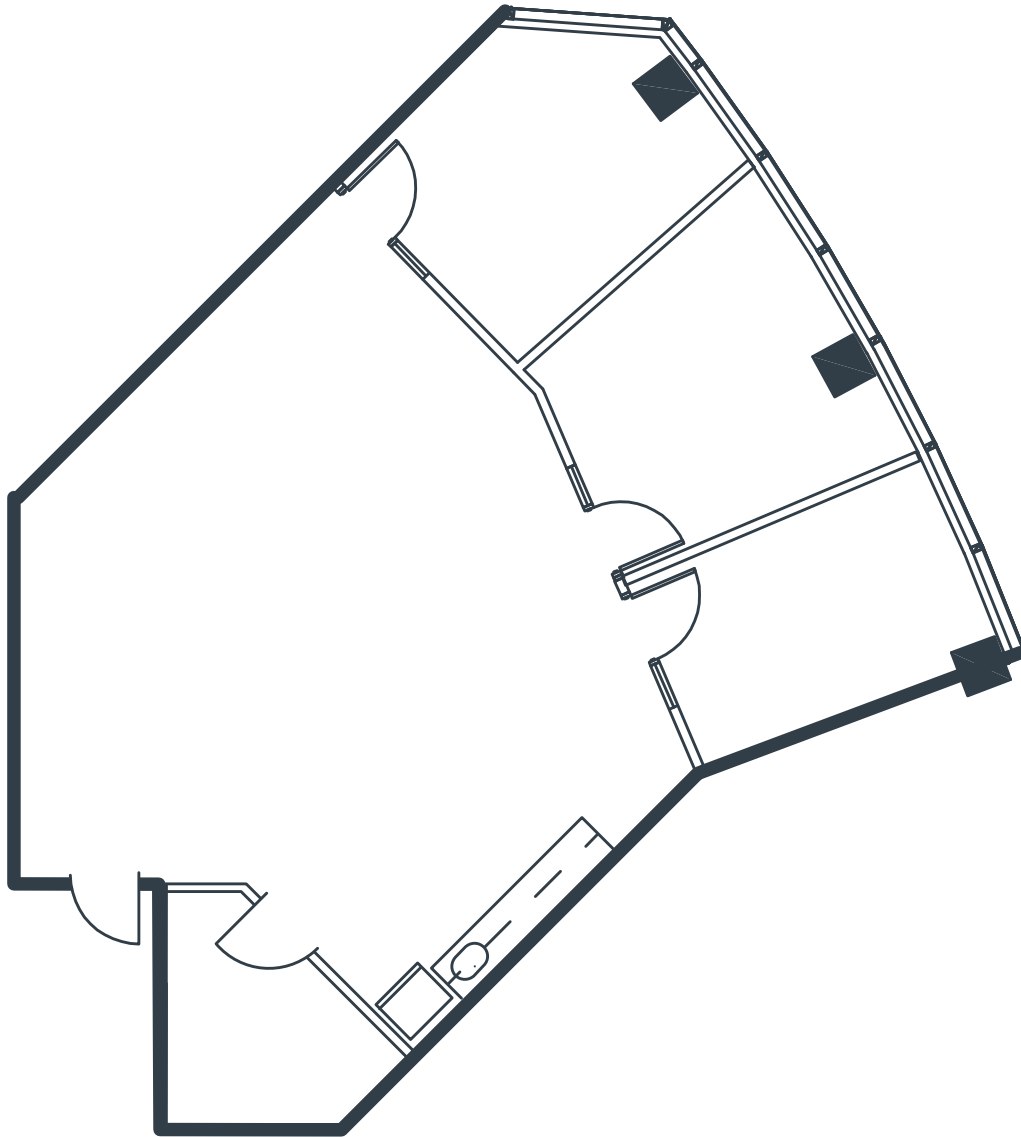


CENTURY CENTRE

2601 Main Street, Suite 780
Irvine, CA

1,619 Square Feet
Call for Pricing
Full Service Gross



NOTES

- Reception
- 3 Window Offices
- Interior Office
- Coffee Bar
- Large Open Work Area
- Part of a Professionally Managed Business Park

Created by Olen Commercial Realty Corp., 2022.
Information is not to be published or copied without
written approval. Square footage and floor plans are
estimates and should be separately verified. All rates,
terms, floor plans, and building facts are subject to
change without notice.

ed 11.04.2022

MARIA MEYER

Senior Leasing Director
949.719.7215
mmeyer@olen.com



Seven Corporate Plaza
Newport Beach, CA
949.644.6536
www.olen.com