

**AVAILABLE FOR LEASE**

**2079 CENTER SQUARE ROAD**  
LOGAN TOWNSHIP, NEW JERSEY



**57,680± SF BUILDING FOR LEASE**

**RAIL SERVED | HEAVY POWER**

**6.23 ACRES W/ LARGE PAVED AREA**



LOCATED JUST  
OFF I-295  
AT EXIT 10

**CONTACT**

**SCOTT MERTZ, SIOR**  
+1 609 413 5647  
scott.mertz@naimertz.com



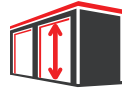
# PROPERTY DETAILS

2079 CENTER SQUARE ROAD LOGAN TOWNSHIP, NJ



**SPACE AVAIL**

**57,680±  
SQ. FEET**



**CEILING  
HEIGHT**

**20'  
CLEAR**



**LOADING**

**7 TAILGATES  
3 DRIVE-INS**



**RAIL SERVED**

**2 DOORS**

TOTAL RENTABLE SF	57,680± SF
ACREAGE	6.23± acres
CEILING HEIGHT	20' clear
LOADING	(7) tailgates w/ shelters (3) drive-ins
RAIL SERVICE	(2) rail doors
COLUMN SPACING	34' x 42'8"

POWER	2000a, 480/277v, 3P 208/120v sub-panels
FIRE SUPPRESSION	Wet sprinkler system
HVAC	Gas heat, air conditioned office
ROOF	TPO installed 2018 20-YR warranty
ZONING	LI
EMPLOYEE PARKING	90 lined spaces



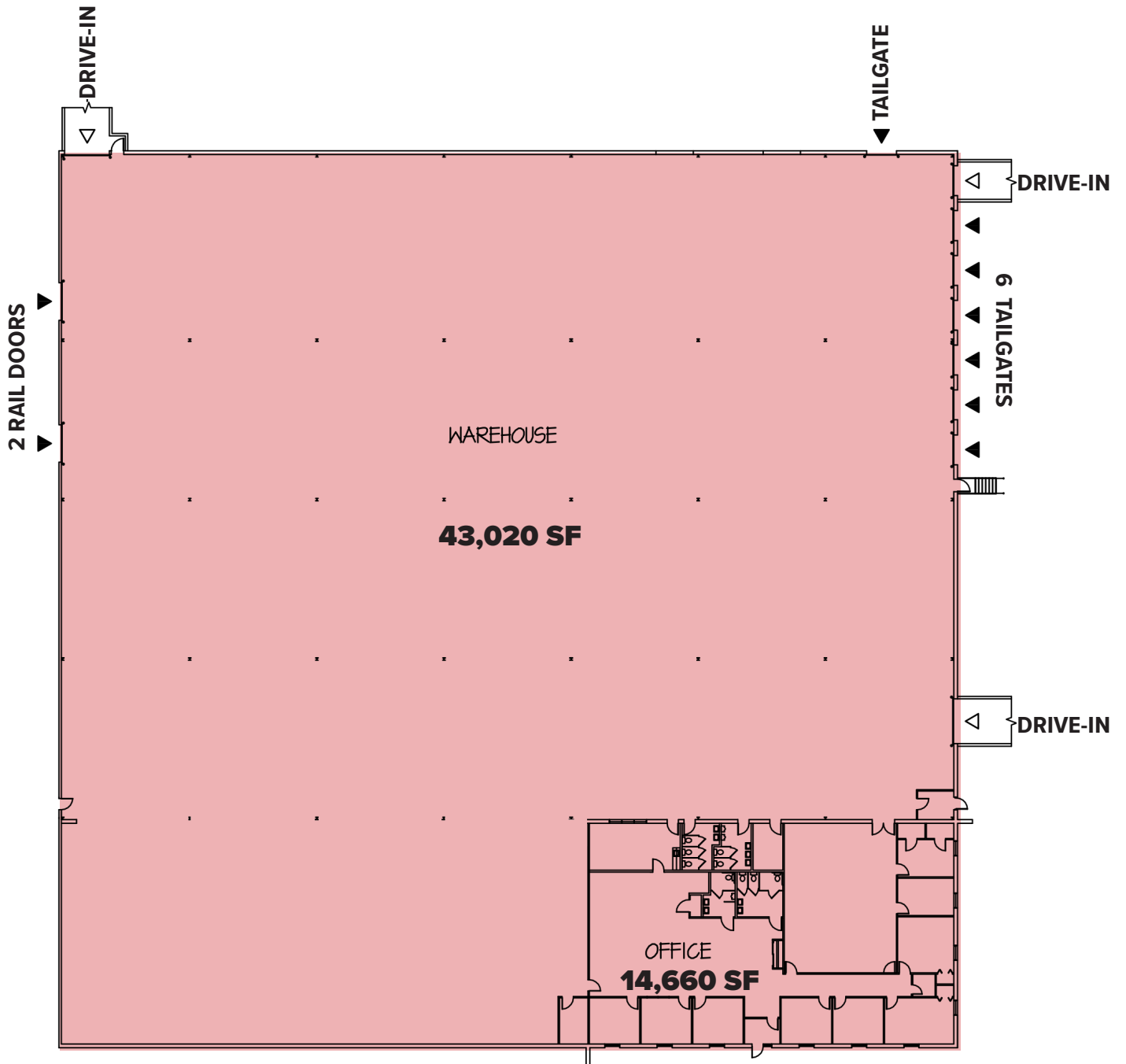
## CONTACT

**SCOTT MERTZ, SIOR**  
+1 609 413 5647  
scott.mertz@naimertz.com



# FLOORPLAN

2079 CENTER SQUARE ROAD LOGAN TOWNSHIP, NJ



## CONTACT

SCOTT MERTZ, SIOR

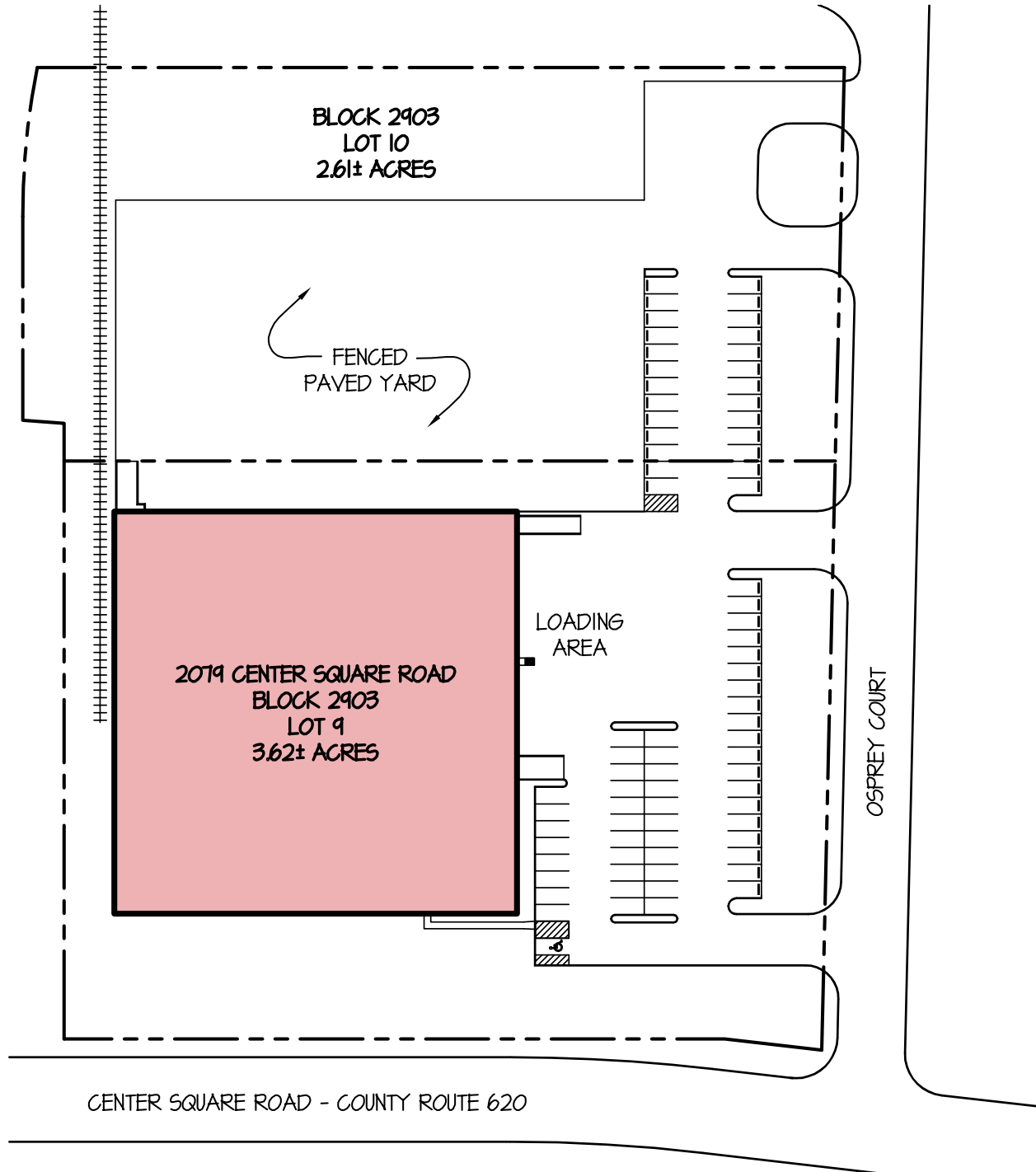
+1 609 413 5647

scott.mertz@naimertz.com



# SITE PLAN

2079 CENTER SQUARE ROAD LOGAN TOWNSHIP, NJ



## CONTACT

SCOTT MERTZ, SIOR

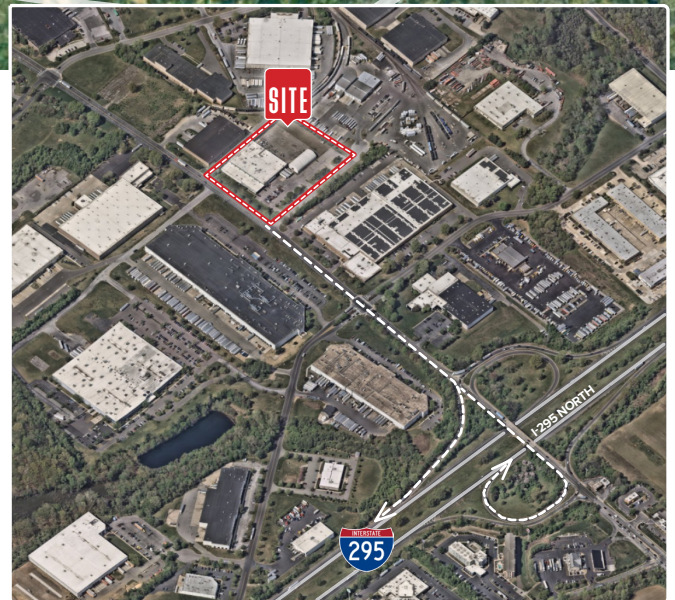
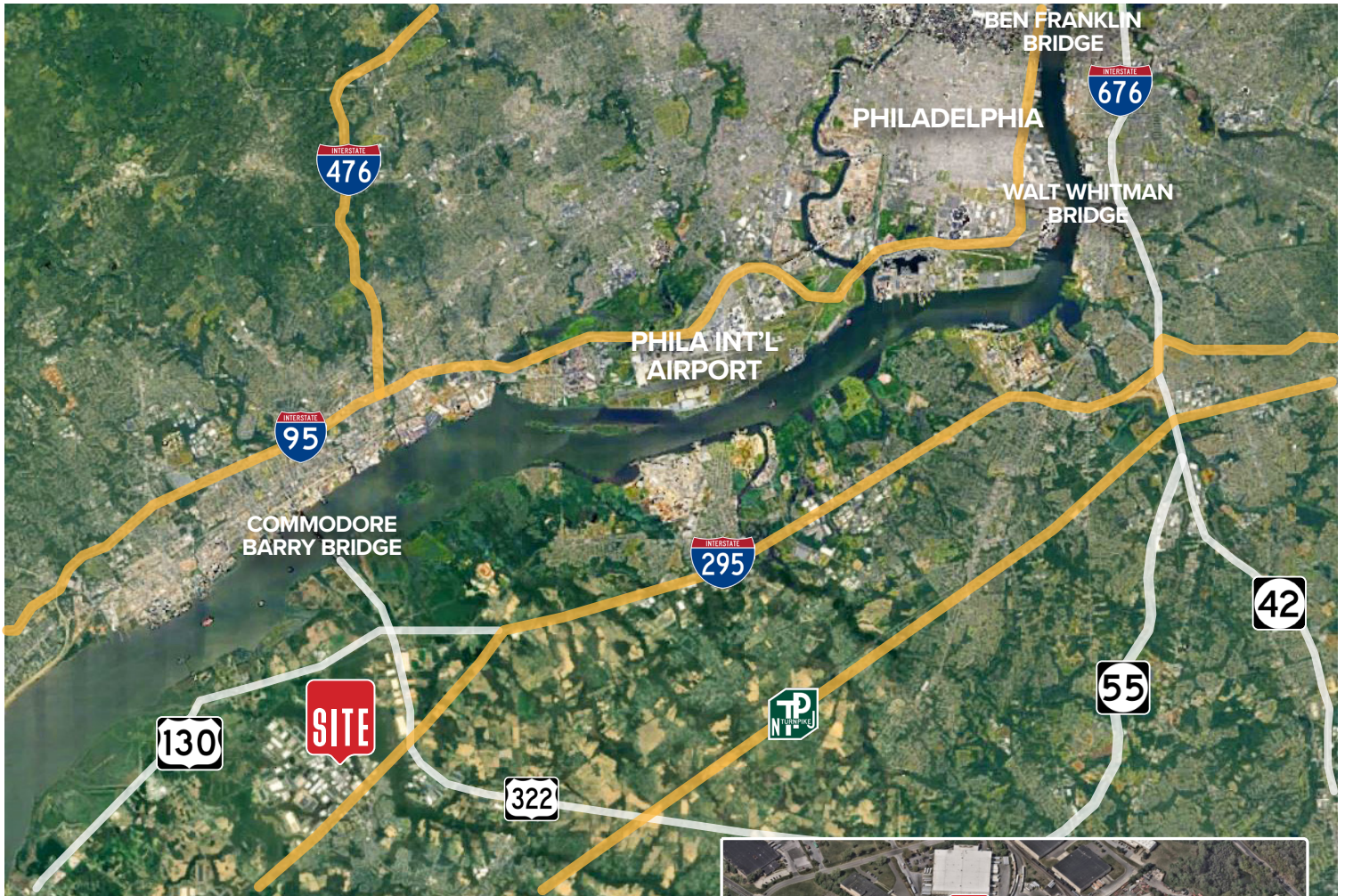
+1 609 413 5647

scott.mertz@naimertz.com



# LOCATION INFORMATION

2079 CENTER SQUARE ROAD LOGAN TOWNSHIP, NJ



## DISTANCE TO:

I-295 S (Exit 10)	0.3 mi
I-295 N (Exit 10)	0.5 mi
Route 322	2.3 mi
Commodore Barry Bridge	4.9 mi
NJ Turnpike (Exit 2)	6.2 mi
Delaware Memorial Bridge	9.8 mi
Philadelphia Int'l Airport	15.4 mi
Center City Philadelphia	24.0 mi

## CONTACT

SCOTT MERTZ, SIOR

+1 609 413 5647

scott.mertz@naimertz.com

