



19  
GRAYBAR

CONFERENCE CENTER AT

420 LEX  
THE GRAYBAR BUILDING

NEWLY  
CONSTRUCTED  
19TH FLOOR  
CONFERENCE  
CENTER



# RECEPTION + LOUNGE AREA



# SELF-SERVICE PANTRY



Guests with reservations can enjoy complimentary snacks and beverages from our self-service pantry.

# MEETING ROOMS + COLLABORATIVE SPACES



Casual seating is available in our pre-function space for guests to enjoy before, during, or after their meeting.

# OUTDOOR TERRACE



Enjoy views overlooking Lexington Avenue from our outdoor terrace before, during, or after your meeting.

# BOARDROOM



**Minimum Capacity:** 10  
**Maximum Capacity:** 36  
(28 seats + perimeter benches)

**Hourly Rate:** \$600  
**A/V:** 96" 4K main display, two 65" 4K side displays, audio / video conferencing, Polycom system, courtesy phone, and adapters (USB-C and Mini DisplayPort to HDMI adapters, USB-C to USB-A hub, HDMI cable, iPhone charger) available for device connectivity

# CONFERENCE ROOM A



**Minimum Capacity:** 6  
**Maximum Capacity:** 14

**Hourly Rate:** \$300

**A/V:** 85" 4K display, audio conferencing, Polycom system, courtesy phone, and adapters (USB-C and Mini DisplayPort to HDMI adapters, USB-C to USB-A hub, HDMI cable, iPhone charger) available for device connectivity

# CONFERENCE ROOM C



**Minimum Capacity:** 6  
**Maximum Capacity:** 14

**Hourly Rate:** \$300

**A/V:** 85" 4K display, audio conferencing, Polycom system, courtesy phone, and adapters (USB-C and Mini DisplayPort to HDMI adapters, USB-C to USB-A hub, HDMI cable, iPhone charger) available for device connectivity

# CONFERENCE ROOM D



**Minimum Capacity:** 4  
**Maximum Capacity:** 12

**Hourly Rate:** \$250

**A/V:** 82" 4K display, audio conferencing, Polycom system, courtesy phone, and adapters (USB-C and Mini DisplayPort to HDMI adapters, USB-C to USB-A hub, HDMI cable, iPhone charger) available for device connectivity

# CONFERENCE ROOM E



**Minimum Capacity: 2**  
**Maximum Capacity: 7**

**Hourly Rate: \$100**

**A/V:** 55" 4K display, audio conferencing, Polycom system, courtesy phone, and adapters (USB-C and Mini DisplayPort to HDMI adapters, USB-C to USB-A hub, HDMI cable, iPhone charger) available for device connectivity

# CONFERENCE ROOM F



**Minimum Capacity:** 4  
**Maximum Capacity:** 8

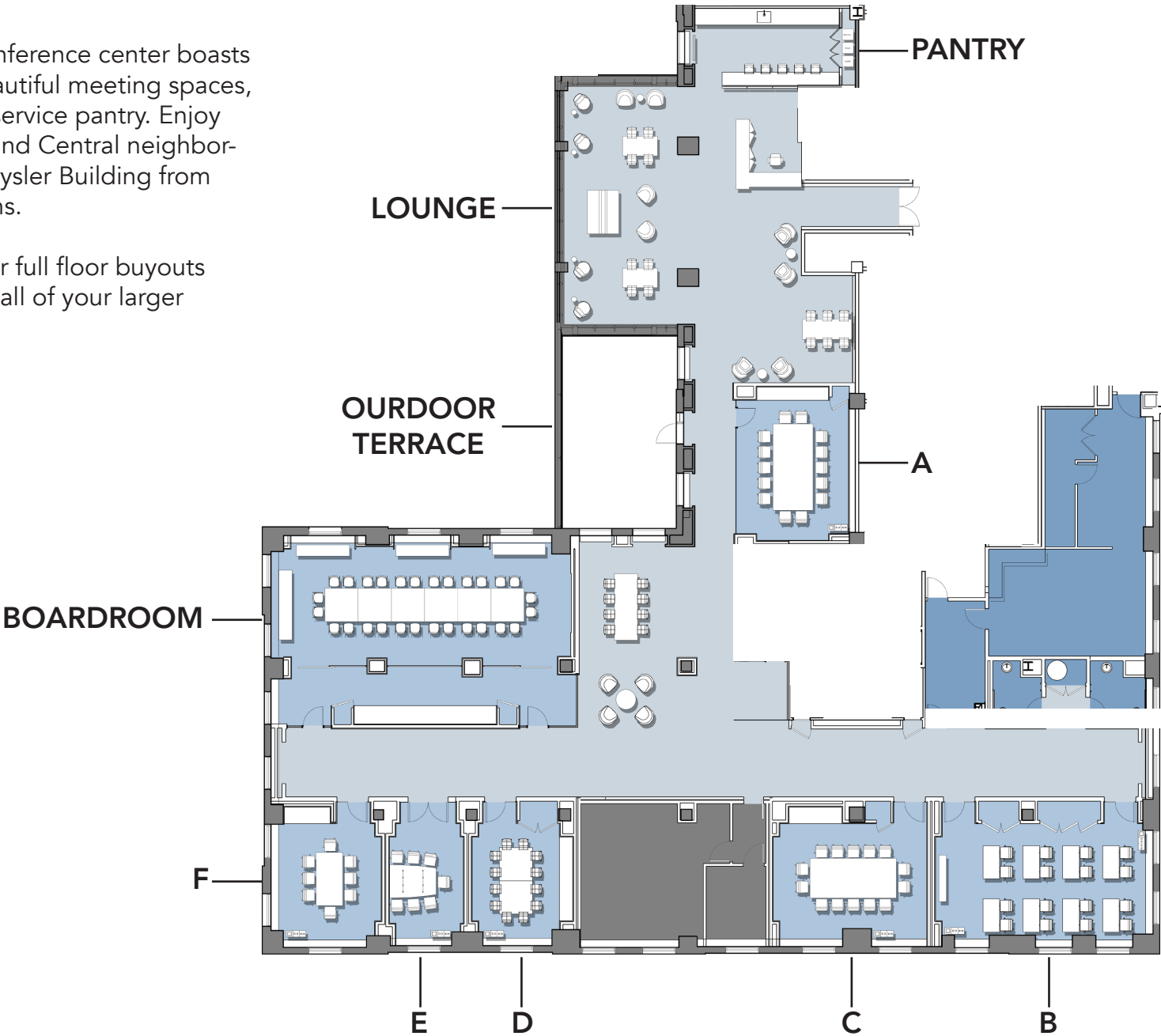
**Hourly Rate:** \$150

**A/V:** 82" 4K display, audio conferencing, Polycom system, courtesy phone, and adapters (USB-C and Mini DisplayPort to HDMI adapters, USB-C to USB-A hub, HDMI cable, iPhone charger) available for device connectivity

# FLOOR PLAN

Our brand new luxury conference center boasts 18,000 square feet of beautiful meeting spaces, lounge areas, and a self-service pantry. Enjoy stunning views of the Grand Central neighborhood, East River, and Chrysler Building from our unique meeting rooms.

Graybar 19 is available for full floor buyouts with advanced notice for all of your larger meeting needs.



# DAY PASSES TO GRAYBAR19

## Need a touchdown space for the day?

Single day access is available for a daily rate of \$120

## Not an SL Green tenant?

If you know someone in need of a day pass, but they are not an SL Green tenant, you can refer them to us

*Email [Graybar19@slgreen.com](mailto:Graybar19@slgreen.com) to book*





## CONFERENCE CENTER AT



[slgreen.com](http://slgreen.com)

For conference center inquiries, please email [Graybar19@slgreen.com](mailto:Graybar19@slgreen.com).

AARON WYNNE  
Conference Center Coordinator  
212.852.6097  
[aaron.wynne@slgreen.com](mailto:aaron.wynne@slgreen.com)

REBECCA BALLIE  
Guest Concierge  
917.439.4907  
[rebecca.ballie@slgreen.com](mailto:rebecca.ballie@slgreen.com)

JELENA KERO  
Hospitality Manager  
212.216.1609  
[jelena.kero@slgreen.com](mailto:jelena.kero@slgreen.com)

GERALD FEURER  
Director of Hospitality  
212.324.8811  
[gerald.feurer@slgreen.com](mailto:gerald.feurer@slgreen.com)

