

MSC



Q2

N. BROAD STREET

TEMPLE UNIVERSITY/NORTH BROAD STREET | PHILADELPHIA, PA

PROMINENT 30,000 SF BI-LEVEL RETAIL WITH ESCALATOR. CART CONVEYOR & DEDICATED PARKING

922 N. BROAD STREET

DEMOGRAPHICS

EST. POPULATION

1 mi 88,540

3 mi 527,707

3 mi 1,065,500

EST. MEDIAN AGE

1 mi 30.2

3 mi 33.2

5 mi 34.2

EST. EMPLOYEES

1 mi 32,620

3 mi 320,091

5 mi 484,828

EST. MEDIAN HH INCOME

1 mi \$77,065

3 mi \$74,716

5 mi \$67,000

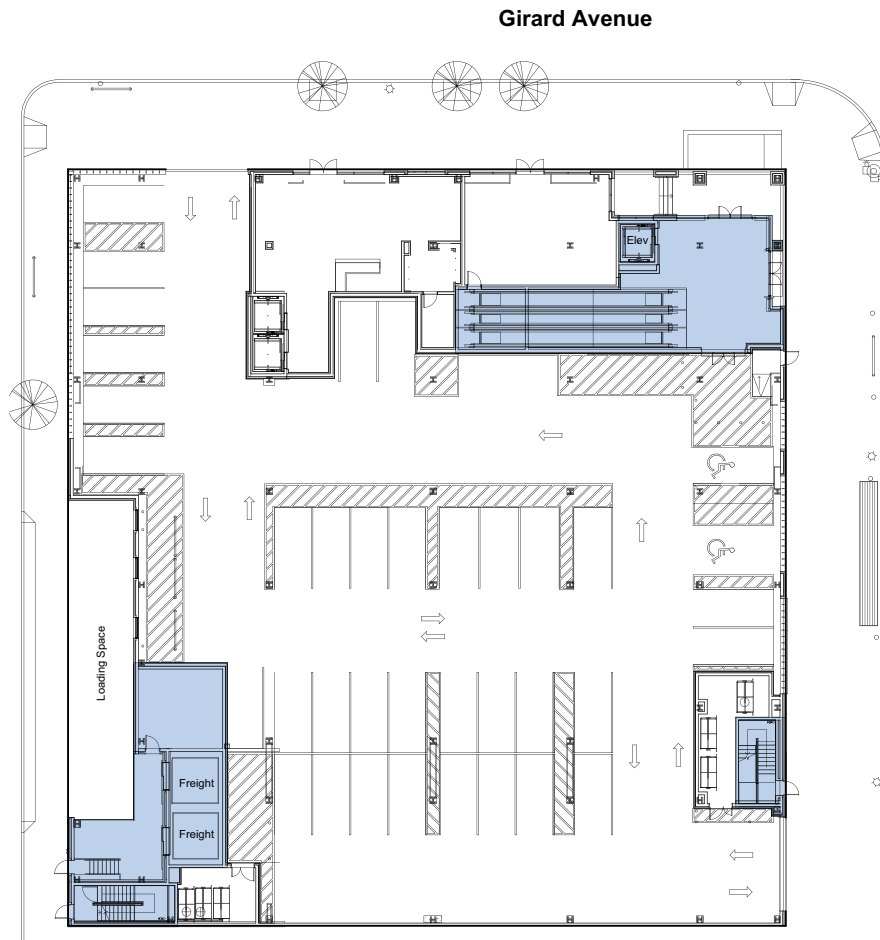
PROPERTY DETAILS

- ▶ Prominent 2nd-floor corner retail opportunity on North Broad Street
- ▶ Dedicated ground-floor access with elevator and escalator
- ▶ 30 dedicated ground-floor parking spaces
- ▶ Outstanding access to many North Philadelphia neighborhoods, including Temple University, Fairmount, Northern Liberties, and Callowhill.
- ▶ Brand-new mechanicals and HVAC already installed in the space

JOIN NEIGHBORING TENANTS

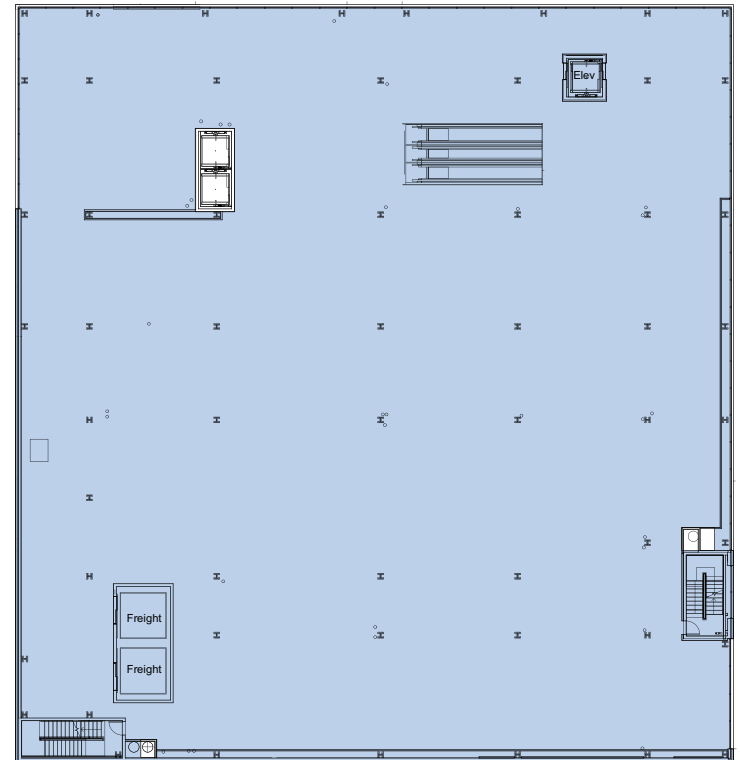


FLOOR PLAN



Ground Floor Plan - 3,317 GSF
Scale: 1" = 30'-0"

N Broad Street



2nd Floor Plan - 26,698 GSF
Scale: 1" = 30'-0"

MSC

JACOB COOPER

jcooper@hellomsc.com

215.813.3784

