

COLLIER PARK OF COMMERCE

INDUSTRIAL FLEX SPACE

FOR LEASE

2940-2960 HORSESHOE DRIVE S, NAPLES, FL 34104



Collier Park of Commerce is located adjacent to the Naples Airport. This property provides tenants with a central location, excellent accessibility and good visibility, with many amenities in the immediate area.

The Business Park is owned and managed by the Adler Group, which owns and manages an extensive real estate portfolio of properties in the Southeast United States. Adler Group professionals possess a deep understanding of the CRE industry and are extremely responsive to their tenants' needs.

ON-SITE PROPERTY MANAGEMENT

CONTACT
DAVE WALLACE, CCIM, SIOR
Senior Vice President
239.659.1447
dave.wallace@creconsultants.com

DAVID WALLACE
Senior Associate
239.659.1447
david.wallace@creconsultants.com

12140 Carrissa Commerce Ct, Ste 102
Fort Myers, FL 33966

1100 Fifth Ave, Ste 404
Naples, FL 34102

LEASE RATE: \$22.00 PSF NNN

AVAILABILITY:

BUILDING	UNIT	SIZE (SF)	LEASE RATE (PSF)	AVAILABLE
2960	100	1,580	\$22.00	7/1/2026
2960	800	1,500	\$22.00	8/1/2026

LOCATION: Located just north of Radio Road, adjacent to the Naples Municipal Airport

YEAR BUILT: 1983

ZONING: BP - Business Park District (Collier County)

The information contained herein was obtained from sources believed reliable. CRE Consultants makes no guarantees, warranties or representations as to the completeness or accuracy thereof, and is subject to errors, omissions, change of price or conditions prior to sale or lease, or withdrawal without notice. 042026

COLLIER PARK OF COMMERCE

INDUSTRIAL FLEX SPACE



FOR LEASE

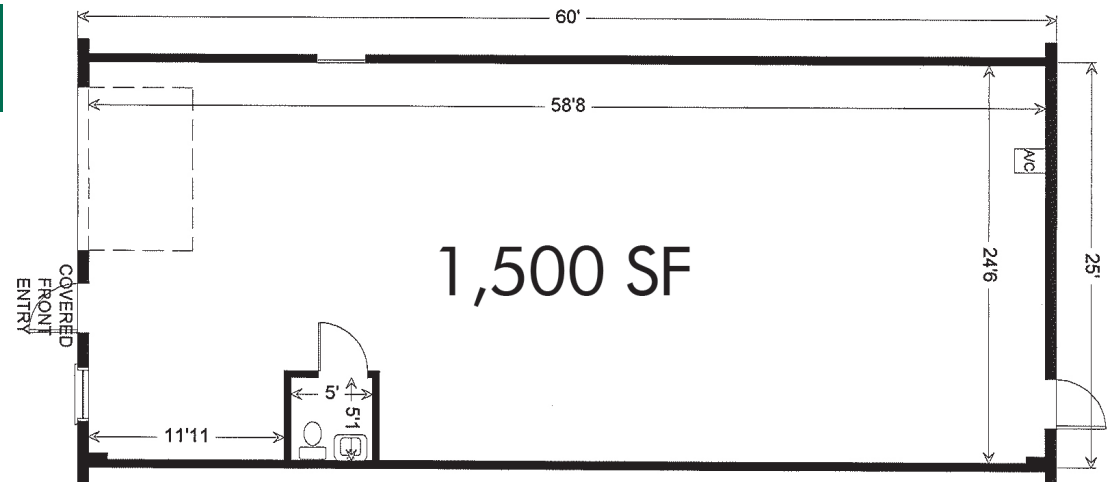
2940-2960 HORSESHOE DRIVE S, NAPLES, FL 34104

Building 2960

* Suite 1000 1,580 SF	* Suite 900 1,500 SF	* Suite 800 1,500 SF Available 8/1/2026	* Suite 700 1,500 SF	* Suite 400-600 4,500 SF	* Suite 300 1,500 SF	* Suite 200 1,500 SF	* Suite 100 1,580 SF Available 7/1/2026
--------------------------------	-------------------------------	--	-------------------------------	-----------------------------------	-------------------------------	-------------------------------	--

- Air-conditioned
- 15' Clear Height
- Open warehouse
- 8' x 12' Overhead door
- Restroom in unit
- Entry door in front and rear of unit
- Professionally managed
- On-site maintenance employee
- Secure and clean building

TYPICAL UNIT FLOOR PLAN



CONTACT
DAVE WALLACE, CCIM, SIOR
 Senior Vice President
 239.659.1447
 dave.wallace@creconsultants.com

DAVID WALLACE
 Senior Associate
 239.659.1447
 david.wallace@creconsultants.com

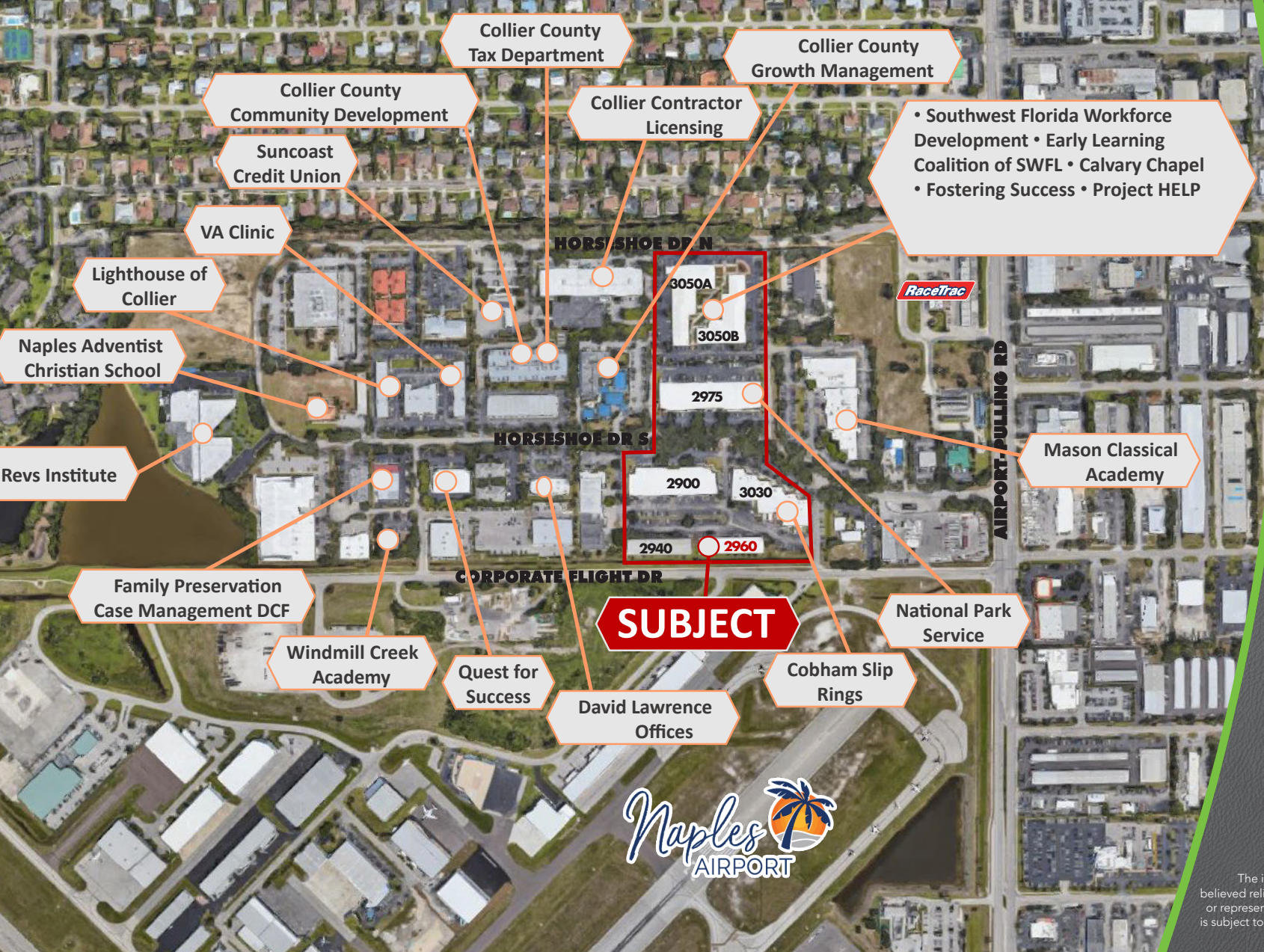
The information contained herein was obtained from sources believed reliable. CRE Consultants makes no guarantees, warranties or representations as to the completeness or accuracy thereof, and is subject to errors, omissions, change of price or conditions prior to sale or lease, or withdrawal without notice. 042026

COLLIER PARK OF COMMERCE

INDUSTRIAL FLEX SPACE

FOR LEASE

2940-2960 HORSESHOE DRIVE S, NAPLES, FL 34104



SUBJECT

• Southwest Florida Workforce Development • Early Learning Coalition of SWFL • Calvary Chapel • Fostering Success • Project HELP

CONTACT
DAVE WALLACE, CCIM, SIOR
Senior Vice President
239.659.1447
dave.wallace@creconsultants.com

DAVID WALLACE
Senior Associate
239.659.1447
david.wallace@creconsultants.com

The information contained herein was obtained from sources believed reliable. CRE Consultants makes no guarantees, warranties or representations as to the completeness or accuracy thereof, and is subject to errors, omissions, change of price or conditions prior to sale or lease, or withdrawal without notice. 04/2026 12/18/25

