



For Lease

Fountain Plaza I

701 Town Center Dr, Newport News, VA

Easy access to I-64, the Newport News/Williamsburg International Airport and Public Transportation

Suites ranging from 8,243 SF -13,968 SF

- 119,058 SF, 10-story office building
- 3.36/1,000 SF parking
- Tenants include Riverside Healthcare, PBMares LLP, Morgan Stanley, PNC Bank, Brown Edwards, Point Comfort Wealth Management, Robert Miller
- Shopping and dining within walking distance

Copyright © 2026 Colliers International.
Information herein has been obtained from sources deemed reliable, however its accuracy cannot be guaranteed. The user is required to conduct their own due diligence and verification.

Contact us:

Perry Frazer
Executive Vice President
+1 757 228 1833
perry.frazer@colliers.com

Brian Davidson
Vice President
+1 757 228 1809
brian.davidson@colliers.com

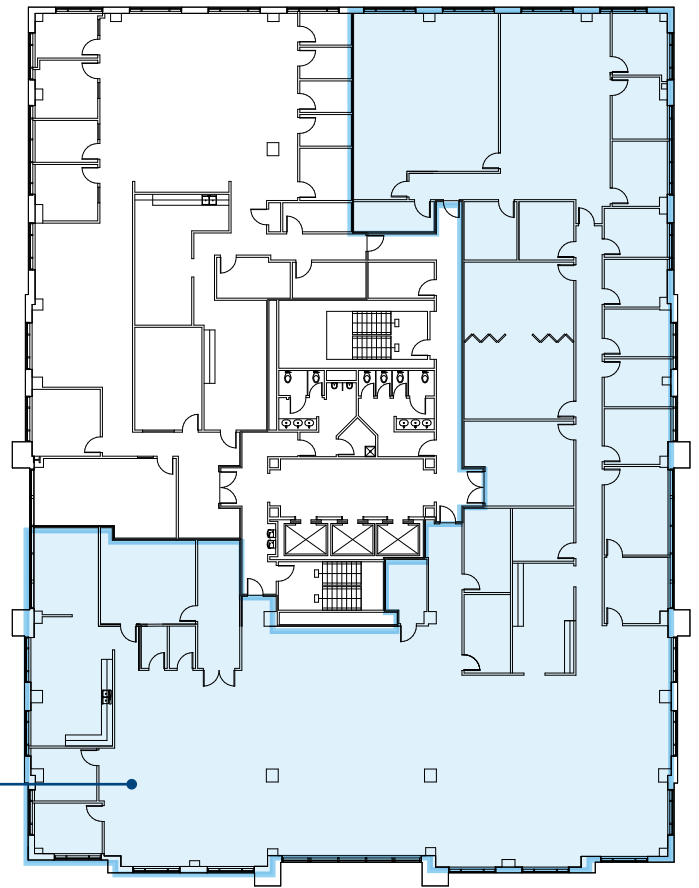
Patrick McCormick
Associate
+1 757 213 8140
patrick.mccormick@colliers.com

Colliers
150 West Main St | Suite 1100
Norfolk, VA 23510
P: +1 757 490 3300
colliers.com

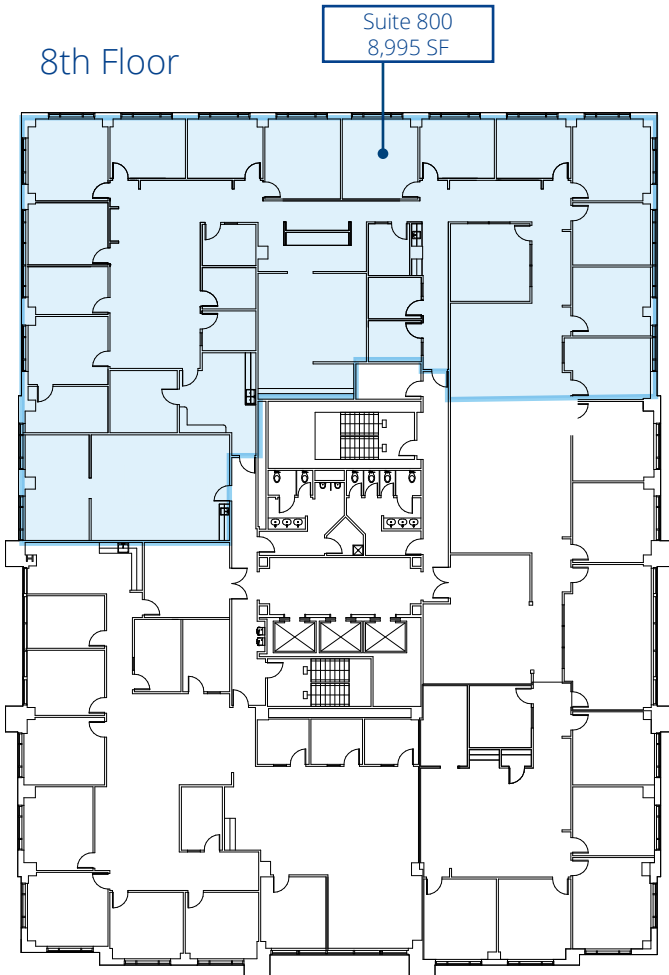
Available Suites

Suite 602	13,968 SF
Suite 800	8,995 SF
Suite 900	8,243 SF

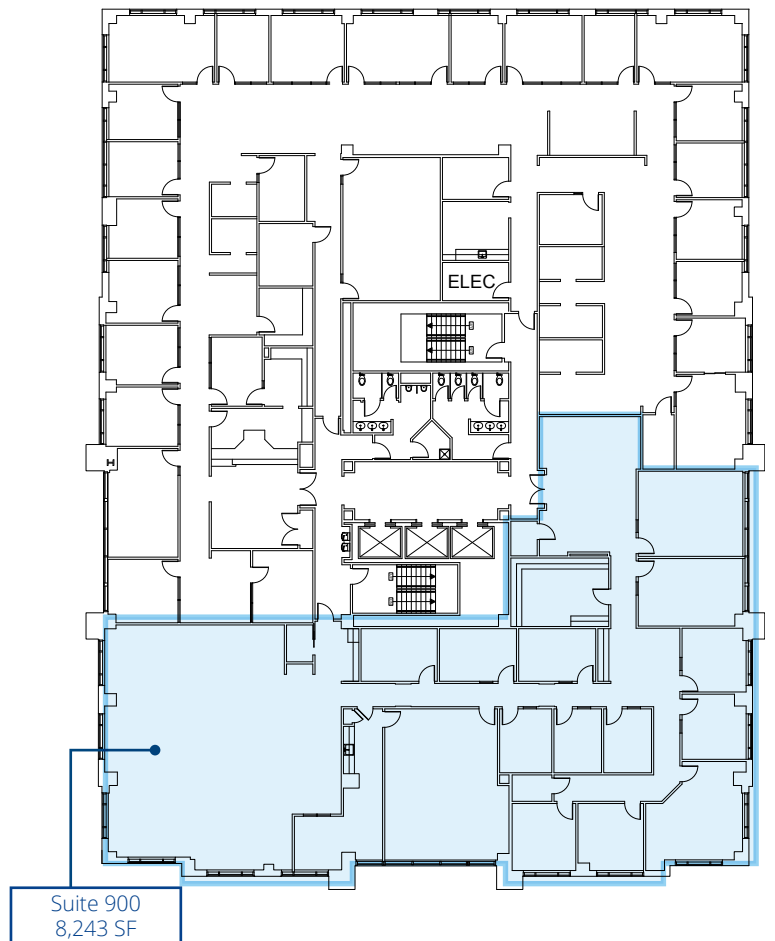
6th Floor



8th Floor



9th Floor



Fountain Plaza I



- 1 Fountain Plaza I
- 2 Fountain Plaza II
- 3 One City Center
- 4 Two City Center
- 5 Town Center One
- 6 Merchants Walk One
- 7 Merchants Walk Two

Demographics



2025 population	Daytime population
86,318	89,989
(3 miles)	(3 miles)

174,701	167,196
(5 miles)	(5 miles)

386,797	397,231
(10 miles)	(10 miles)



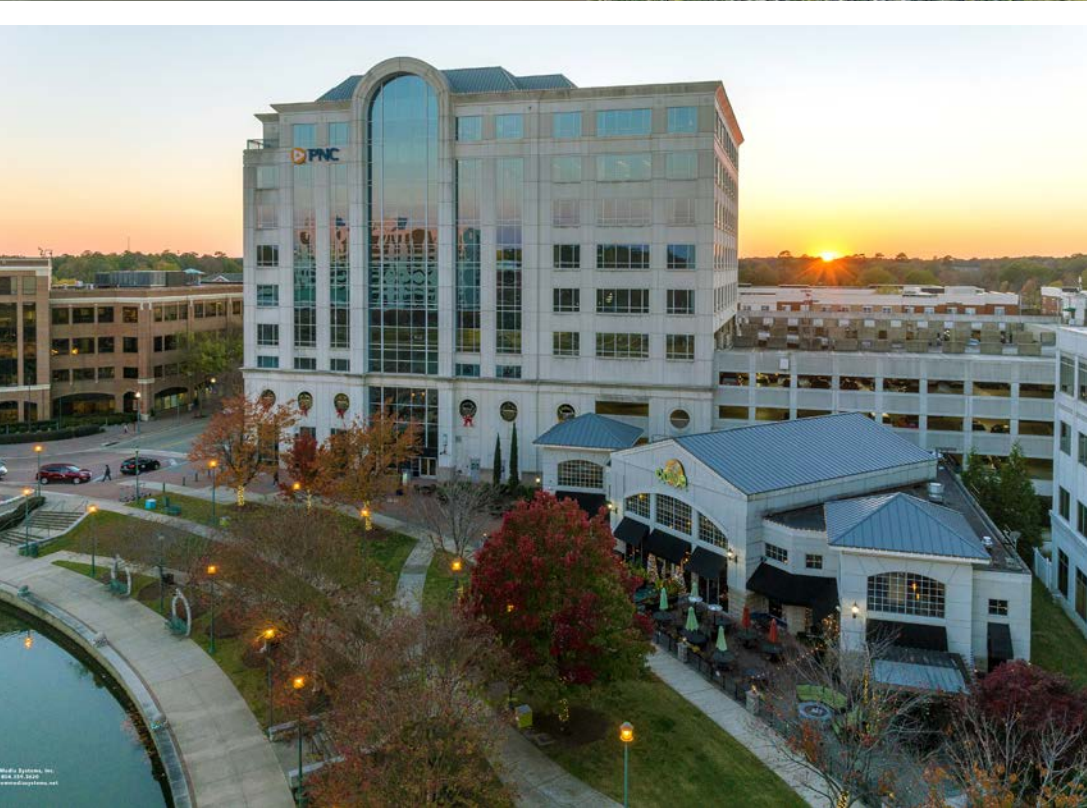
2025 Average Household Income	Number of households
\$98,611	36,013
(3 miles)	(3 miles)

\$100,872	73,545
(5 miles)	(5 miles)

\$95,872	159,481
(10 miles)	(10 miles)



Fountain Plaza I



Contact us:

Perry Frazer

Executive Vice President
+1 757 228 1833
perry.frazer@colliers.com

Brian Davidson

Vice President
+1 757 228 1809
brian.davidson@colliers.com

Patrick McCormick

Associate
+1 757 213 8140
patrick.mccormick@colliers.com

Colliers

150 West Main St | Suite 1100
Norfolk, VA 23510
P: +1 757 490 3300