

# 2391 The Alameda, Santa Clara

920± SF in Freestanding Office Building For Lease



Suite 100

100

2391  
THE ALAMEDA

**DAVID TAXIN**  
Partner  
Lic. #00983163  
408.966.5919  
dtaxin@moinc.net

**AUSTIN CHAPARRO**  
Senior Associate  
Lic. #02121723  
925.785.4842  
austin@moinc.net

**GRANT MESSINGER**  
Senior Associate  
Lic. #02094614  
925.719.7080  
grant@moinc.net

MEACHAM/OPPENHEIMER, INC.  
8 N San Pedro St. #300  
San Jose, CA 95110  
Tel. 408.378.5900  
www.moinc.net





**Available Suite:** Suite 100 | 920± SF (1st Floor)

**Rental Rate:** \$1.95/SF + \$0.70 NNN

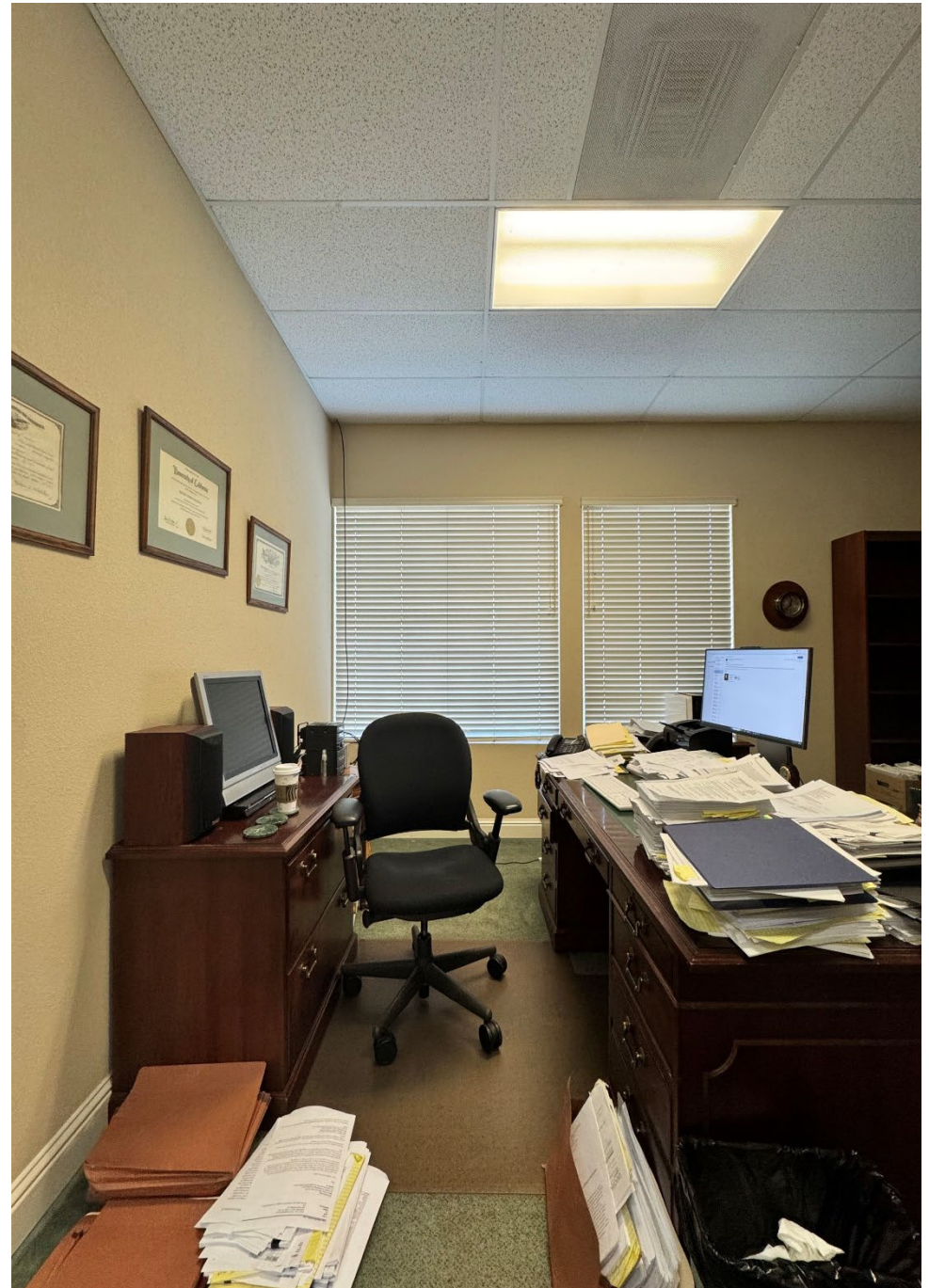
**Zoning:** MUCC - Mixed Use Community Commercial

2 Private Offices/Common Area Kitchen/Bathroom

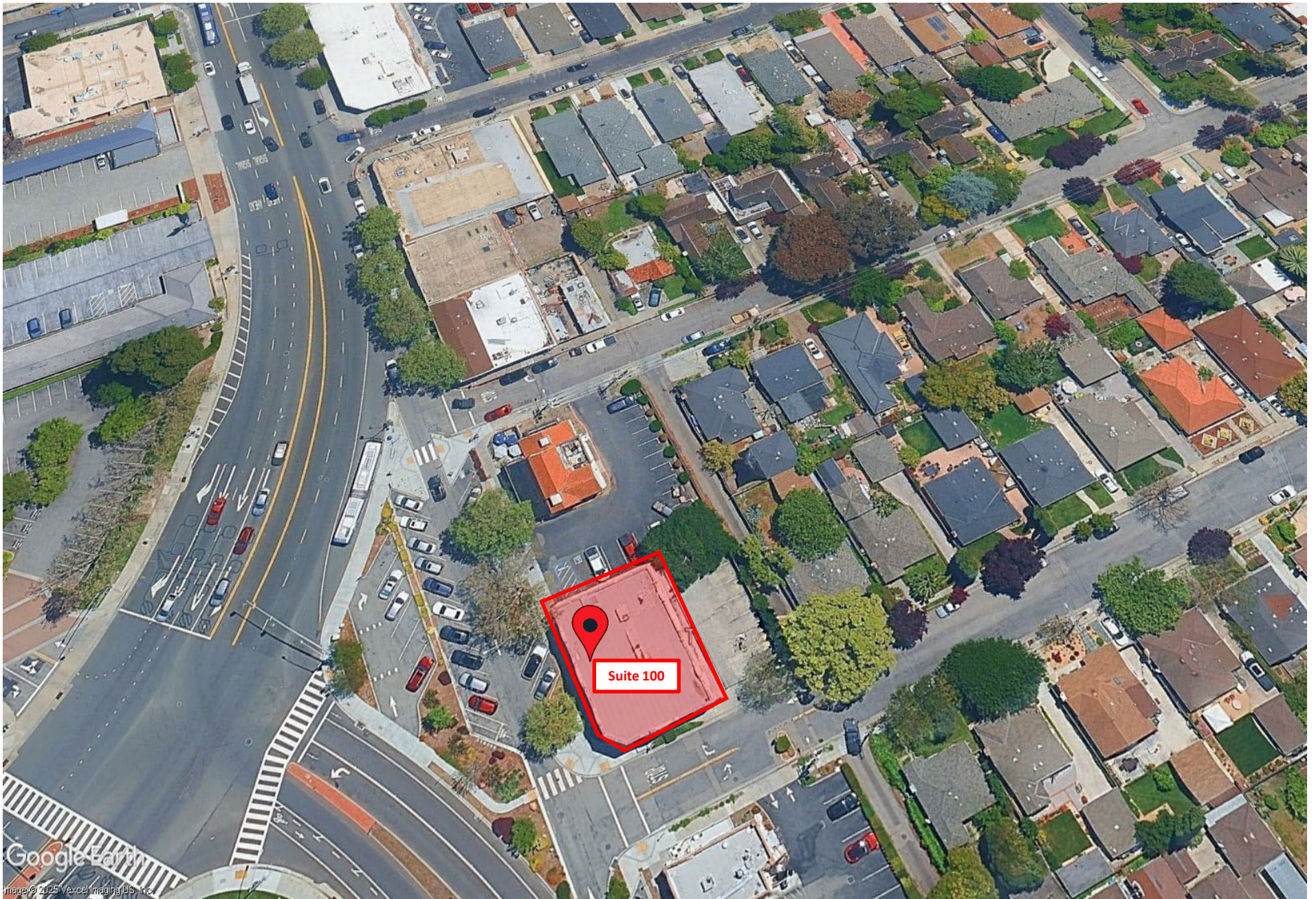
### **Location Highlights:**

- At The Junction Of El Camino Real & The Alameda, Next To Santa Clara University
- Strategically Located Near Highways 87 And 880









# DEMOGRAPHICS



<b>2025 SUMMARY</b>	<b>1-MILE</b>	<b>3-MILE</b>	<b>5-MILE</b>
<b>Population</b>	21,447	205,896	637,325
<b>Households</b>	7,370	81,276	234,679
<b>Average Household Size</b>	2.45	2.45	2.65
<b>Owner Occupied Housing Units</b>	4,811	43,308	106,898
<b>Renter Occupied Housing Units</b>	6,686	49,979	114,116
<b>Median Age</b>	32.0	36.2	36.4
<b>Median Household Income</b>	\$136,956	\$137,609	\$148,711
<b>Average Household Income</b>	\$193,139	\$186,055	\$198,817

# 2391 The Alameda Santa Clara



## DAVID TAXIN

Partner  
Lic. #00983163  
408.966.5919  
dtaxin@moinc.net

## AUSTIN CHAPARRO

Senior Associate  
Lic. #02121723  
925.785.4842  
austin@moinc.net

## GRANT MESSINGER

Senior Associate  
Lic. #02094614  
925.719.7080  
grant@moinc.net

MEACHAM/OPPENHEIMER, INC.  
8 N San Pedro St. #300  
San Jose, CA 95110  
Tel. 408.378.5900  
www.moinc.net

