

1629K  
STREET, NW



TRANSWESTERN

REAL ESTATE SERVICES



# ADMIRABLY LOCATED

IN THE HEART OF D.C.

Just steps from both Farragut Square Metro stations and offering convenient access to key DC destinations, corporate offices and federal agencies. 1629 K is surrounded by world-class restaurants, shops, hotels, and services. Suites ranging in all sizes from the 4th to 11th floor.



**AVAILABILITY**  
WITH FLEXIBLE  
TERMS



**ONE BLOCK**  
FROM METRO  
STATION



**100+**  
WALK SCORE  
PARADISE



**VIEWS OF**  
FARRAGUT  
SQUARE



**ACCESSIBLE**  
TO HIGHWAYS  
IMMEDIATELY





# UNMATCHED AMENITIES

## LIFESTYLE ON-SITE

Comfort, convenience, and pleasure all right here at your fingertips. This populated city is home to tons of prestigious landmarks, dining options, shopping, and accessibility features. You'll never miss out here!



**578,719**  
DAY EMPLOYEES  
WITHIN 3 MI.



**OVER 132**  
EATERIES  
WITHIN 1 MI.



**PARKING**  
AVAILABLE  
ON-SITE



**37,994**  
RESIDENTS  
WITHIN 1 MI.

**rōti**

**ON-SITE**  
DINING &  
RETAIL



K STREET



### SUITE 450

- 3,862 SF
- \$42.00 / FS
- Available Now

K STREET



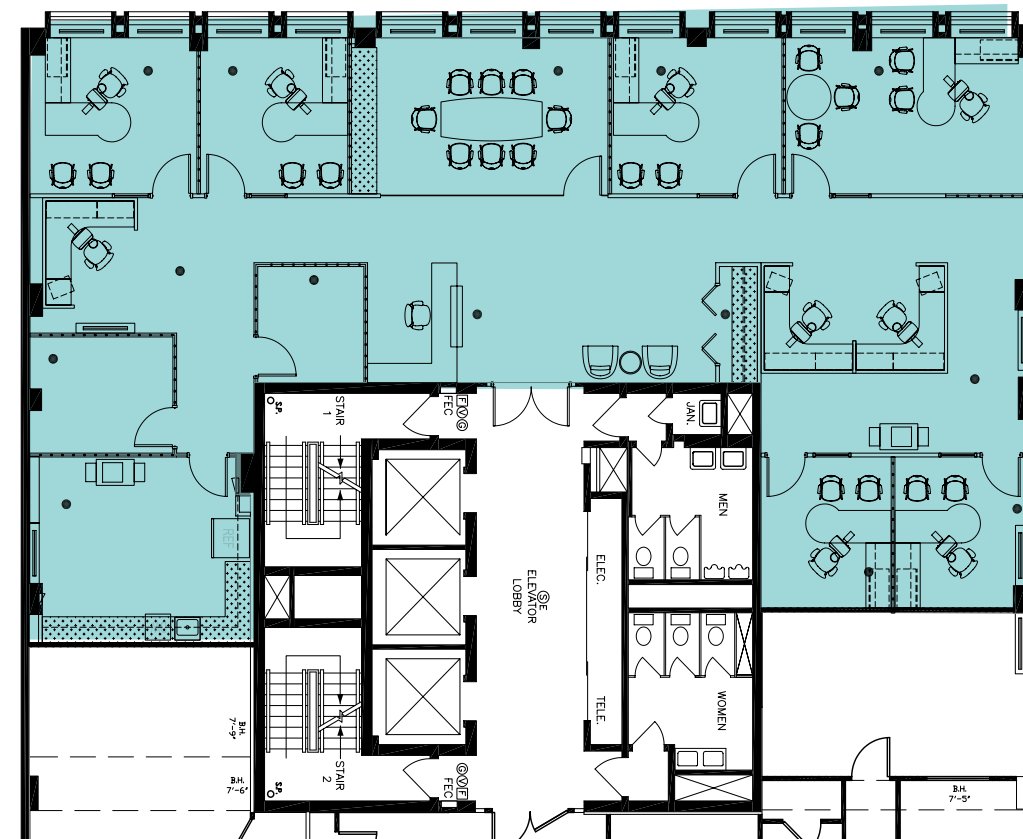
### 5TH FLOOR

- 2,074 SF
- \$42.00 / FS
- Available Now

# FLOOR PLAN AVAILABILITIES

4TH - 10TH FLOOR

K STREET



### SUITE 604

- 3,532 SF
- \$42.00 / FS
- Available Now

K STREET



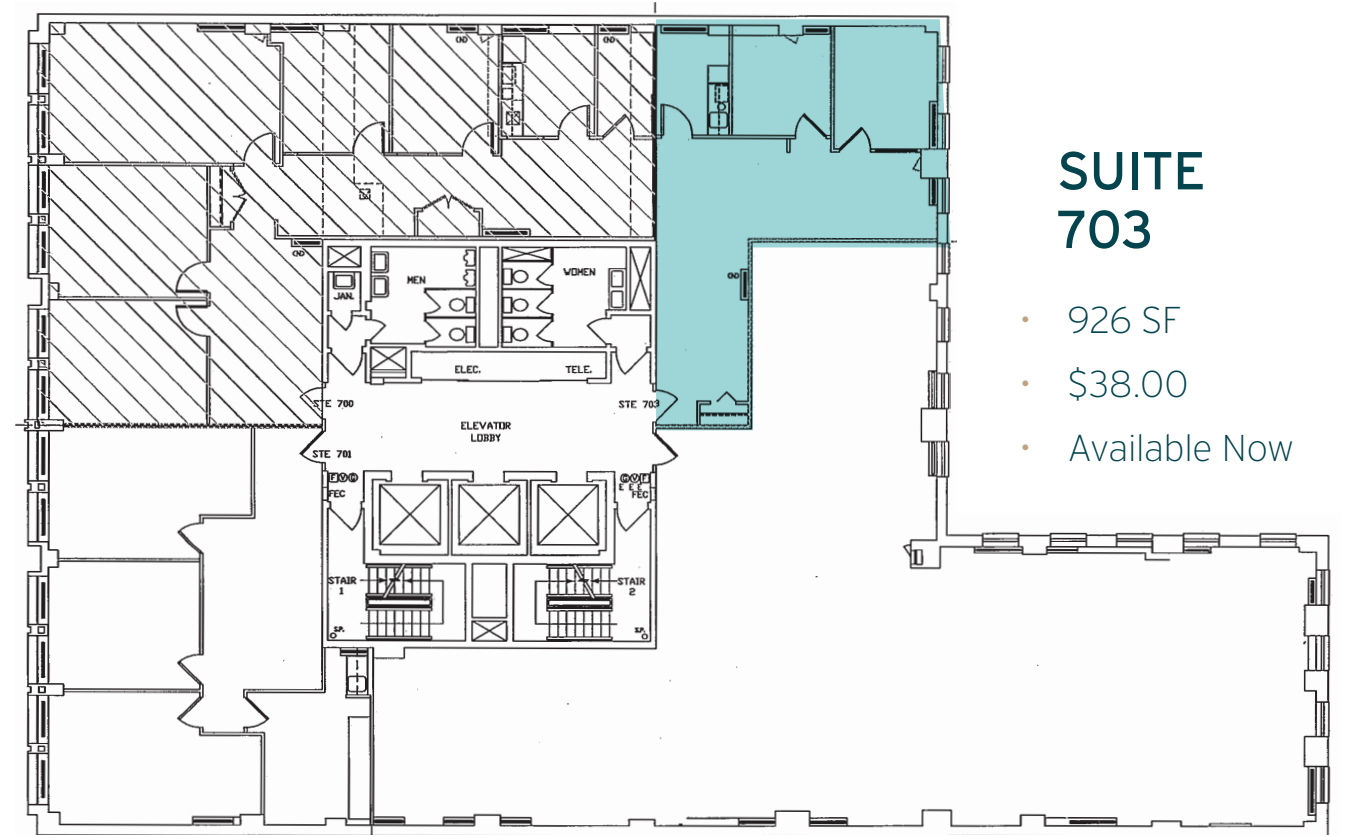
### SUITE 700

- 2,168 SF
- Withheld
- Available Now

# FLOOR PLAN AVAILABILITIES

4TH - 10TH FLOOR

K STREET



### SUITE 703

- 926 SF
- \$38.00
- Available Now



**TOM HILLEY**  
202.775.7008  
tom.hilley@transwestern.com

**SCOTT FETTEROLF**  
202.775.7012  
scott.fetterolf@transwestern.com

2000 K Street NW, Suite 1000 | Washington, DC 20006 | 202.775.7000 | www.transwestern.com

**1629K**  
STREET, NW