

For Lease

**1657 ABBOT KINNEY BLVD
VENICE BEACH**



±979 RSF of Retail / Food & Beverage Space

A PRIME POSITION ALONG ABBOT KINNEY BLVD

1657 Abbot Kinney Blvd offers a rare opportunity to join one of Los Angeles' most dynamic retail corridors. The space is well suited for forward-thinking retail, food, or lifestyle concepts seeking visibility, foot traffic, and strong brand alignment. Neighborhood tenancy includes **Erewhon**, **Buck Mason**, and **Levain Bakery**, reinforcing consistent daily draw and brand adjacency. This is a highly curated stretch where brands thrive through proximity, energy, and experience.



Unit

1657 Abbot Kinney Blvd

Available Space

±979 RSF

Rate

Call for Details

Zoning

City of LA-(T) (Q) CM1-O

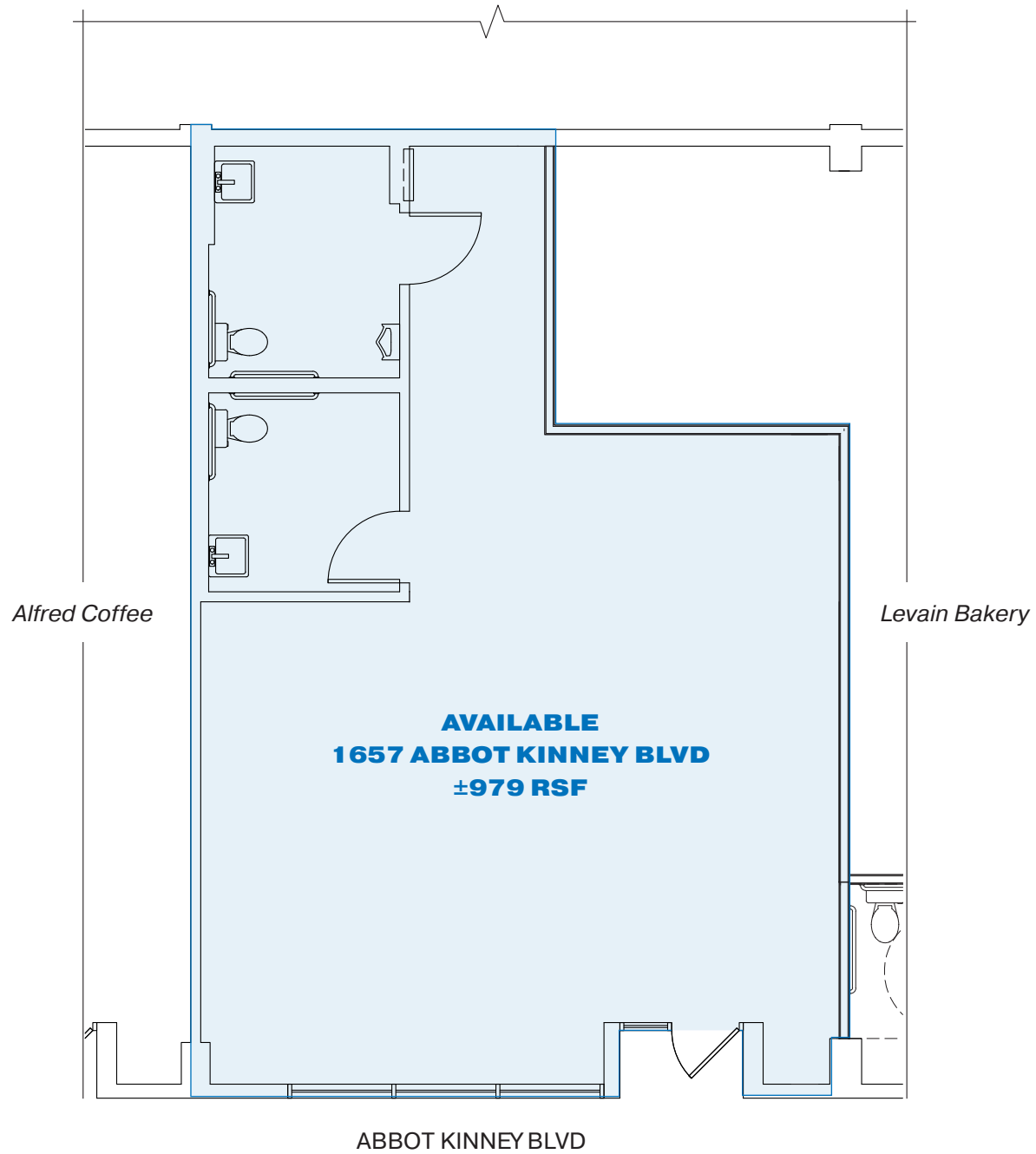
Parking

24 Total On-Site Spaces (Pro Rata | Shared)
+ On-Street

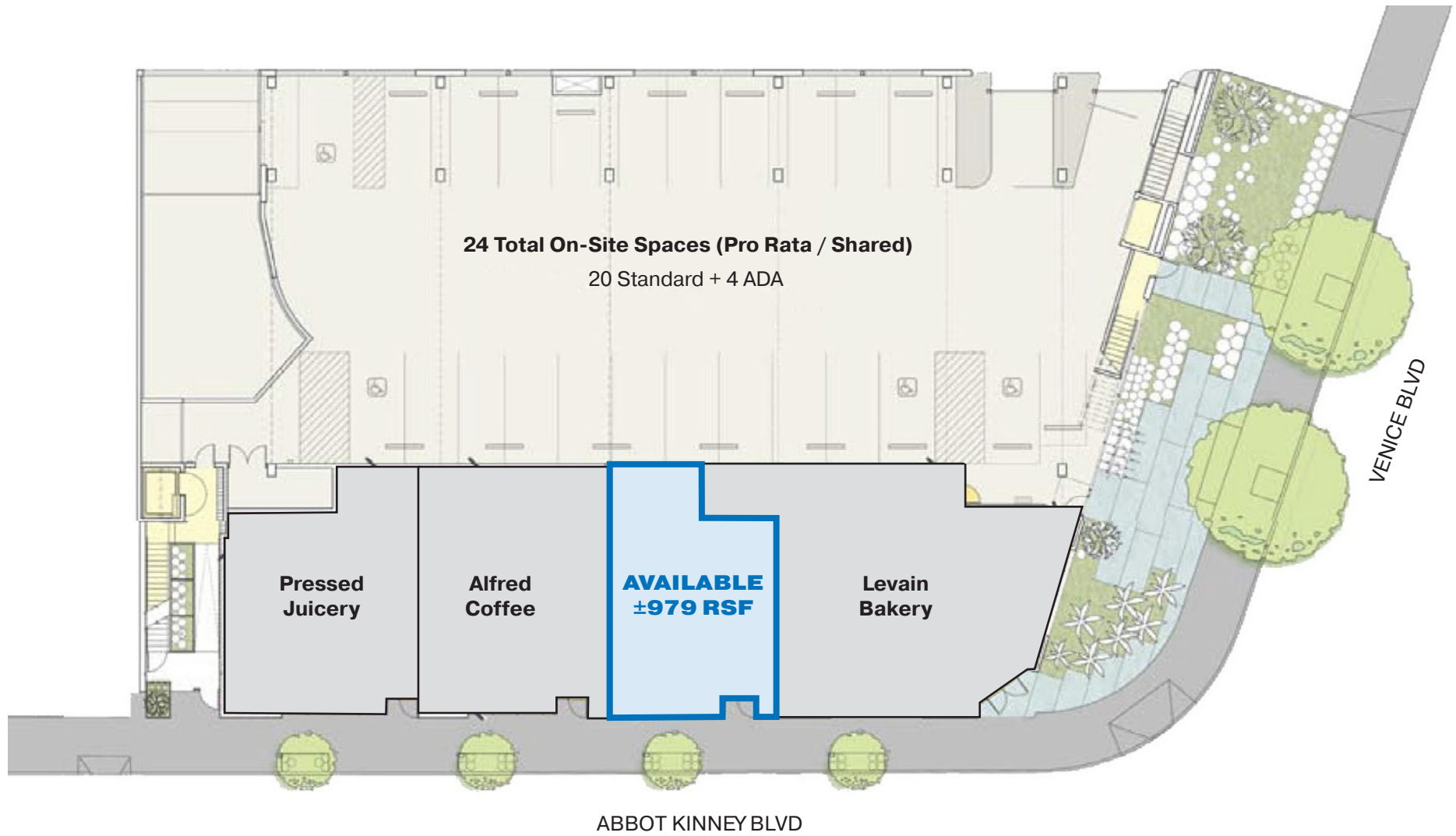
Uses

Retail / Food & Beverage

FLOOR PLAN



SITE PLAN



THE ABBOT KINNEY NEIGHBORHOOD

Abbot Kinney Blvd is one of Southern California’s most celebrated commercial streets, known for its dense mix of retail, dining, and culture. The corridor attracts both destination shoppers and a strong daily local audience, creating consistent activity throughout the week. A carefully curated tenant mix of global brands and local favorites defines the street’s character. This concentration of quality makes Abbot Kinney a proven environment for brand exposure and long-term success.



Renowned **Levain Bakery** next door to 1657 AK



Recently opened French shoe brand **VEJA**



Australian cycling apparel brand **MAAP LaB**



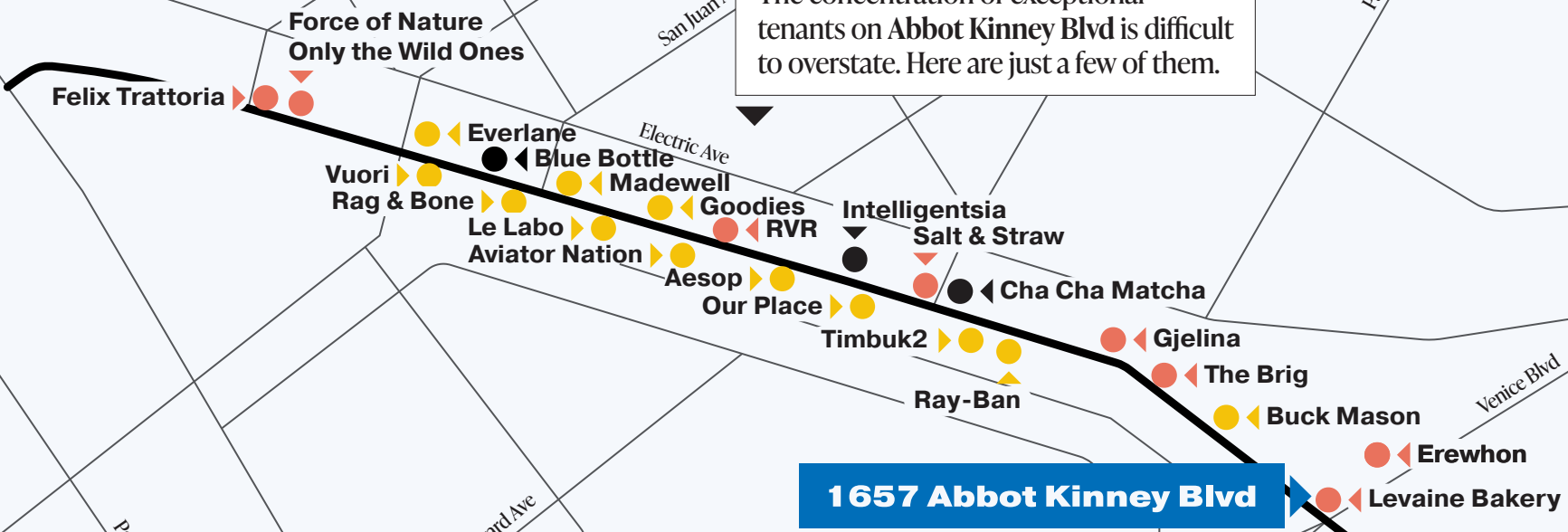
Lifestyle bags and gear brand **Peak Design**

Food & Beverage	Coffee	Retail
+17	+4	+36

Notable Brands/Tenants

- | | |
|------------------------|-------------------|
| Blue Bottle | Birkenstock |
| Cha Cha Matcha | Buck Mason |
| Intelligentsia | Everlane |
| Felix Trattoria | General Admission |
| Force of Nature | Goodies |
| Gjelina | Le Labo |
| Only the Wild Ones | Lululemon |
| RVR | Madewell |
| Salt & Straw | Miansai |
| Sweetfin | Our Place |
| The Brig | Rag & Bone |
| The Butcher’s Daughter | Ray-Ban |
| Erewhon | Suitsupply |
| Adidas | Timbuk2 |
| Aesop | Vuori |
| Allbirds | Warby Parker |
| Aviator Nation | Zadig & Voltaire |

The concentration of exceptional tenants on Abbot Kinney Blvd is difficult to overstate. Here are just a few of them.



Select Brands/Tenants

- Coffee
- Food & Beverage
- Retail

Daniel Pickart

Senior Managing Director
Tel 310-407-6515
daniel.pickart@nmrk.com
CA RE License #01914551

Andrew Jennison

Vice Chairman
Tel 310-407-6518
andrew.jennison@nmrk.com
CA RE License #01275687

Devin Klein

High Street Retail Advisory
Tel 310-387-0303
Devin.Klein2@icloud.com
CA RE License #01471525

Last Updated Jan 7, 2026

Corporate License #01355491

The distributor of this communication is performing acts for which a real estate license is required. The information contained herein has been obtained from sources deemed reliable but has not been verified and no guarantee, warranty or representation, either express or implied, is made with respect to such information. Terms of sale or lease and availability are subject to change or withdrawal without notice.

