

350 MYLES STANDISH BOULEVARD TAUNTON, MA

FOR LEASE

350 Myles Standish BOULEVARD TAUNTON, MA



MYLES STANDISH INDUSTRIAL PARK
- 7 MILLION SQUARE FOOT PARK
- HOME TO OVER 111 COMPANIES
- OVER 8,000 EMPLOYEES

AREA ATTRACTIONS

RESTAURANTS

- Brack's Grille & Tap
- Dunkin'
- Jay Bo Cafe
- Subway
- Wendy's
- Copper Fountain Grille
- Home Plate Bay Street Grille
- The Chateau Restaurant
- Barrels & Boards

HOTELS

- Holiday Inn Taunton - Foxboro
- Clarion - Taunton
- Extended Stay America
- Residence Inn by Marriott
- Fairfield Inn & Suites

SHOPPING & CONVENIENCE

- Market Basket
- Tractor Supply - Home Improvement
- BJs Wholesale
- Walgreens
- CVS Pharmacy
- ATM - Bluestone Bank

SERVICES

- Shooting Stars Daycare
- Lucky Nails & Spa

FITNESS & RECREATION

- The Inn Fitness Health Club & Spa
- Planet Fitness
- Watson Pond State Park
- The Links at Mass Golf



43,622 SF WAREHOUSE - LIGHT MANUFACTURING SPACE



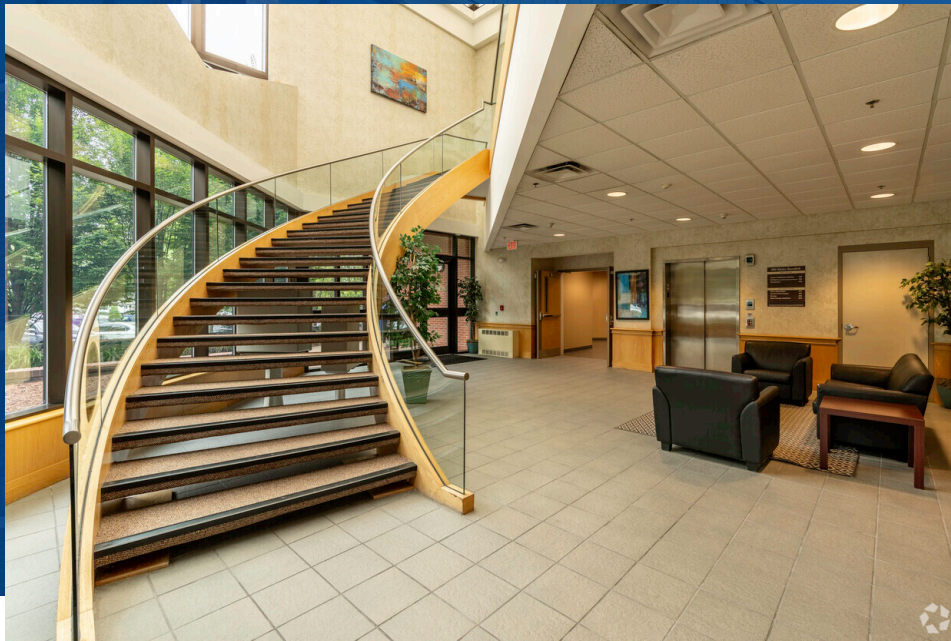
325 Wood Road, Suite 202
Braintree, MA 02184
(781) 848-3778
daiproperties.net

CONVENIENT LOCATION

- 1.5 miles to Rte 495
- 6.5 miles to Rte 24
- 25 miles to Rte 128/95
- 40 miles to Boston
- 29 miles to Providence



For more information please contact
Paul Bourque at pbourque@daiproperties.net
mobile: (781) 710-0903

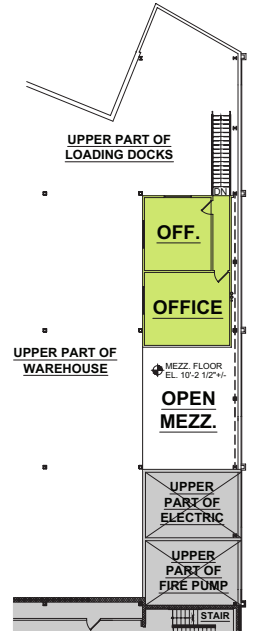


MYLES STANDISH INDUSTRIAL PARK

350 Myles Standish Industrial Park Boulevard is currently offering **43,622 SF** of Warehouse/Light Manufacturing Space. Conveniently located near the main entrance of the Myles Standish Industrial Park, the largest business park in Massachusetts. The 7 million square foot park is home to over 111 companies and 8,000 employees. 350 Myles Standish enjoys a prime park location with signage opportunities and immediate access to Route 495 via Exit 9 at Bay Street.

| | | | | | |
|-------------------------|-------|---------------------------|---|-------------------|-------|
| Loading Docks | 4 | Internet Providers | 2 | Electrical | ? |
| Bay Clear Height | 25 ft | Sprinkler System | ? | Gas | 25 ft |

MEZZANINE
OFFICE
695 SF

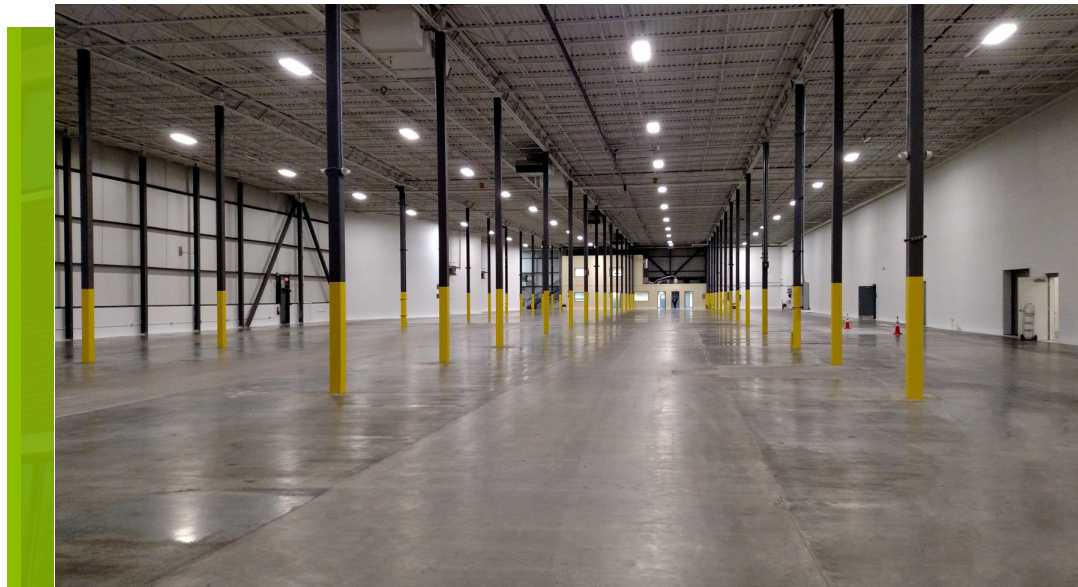


350 MYLES STANDISH BOULEVARD TAUNTON, MA

PROPERTY FACTS

| | |
|------------------------|---------------------------------------|
| Building Type | Office |
| Year Built | 2002 |
| Year Renovated | 2018 |
| Building Height | 2 Stories |
| Building Size | Office 75,425 SF |
| Floor Size | 37,500 SF |
| Restrooms | 4 (2 per floor) |
| Elevators | 1 Bay |
| Parking | Surface 153 spaces Garage 99 spaces |
| EV | 4 on-site EV charging stations |

our property is handicap accessible



FOR LEASE WAREHOUSE-OFFICE SPACE 43,622 SF

FIRST FLOOR
WAREHOUSE
41,665 SF
OFFICE
1,262 SF

