



## ± 859 – 4,113 SF of Medical Office Suites for Lease in Orange

- Beautiful exterior renovation completed in 2021
- Within Walking Distance to St. Joseph Hospital and CHOC in Orange County
- Free on-site parking
- On-site Maintenance Staff
- Lease rate \$3.95/MG per square foot
- Excellent Access to the 22, 55, 57, and 5 Freeways

### Spaces Available

Suite	Floor	Size (SF)
Suite 102	1st Floor	± 954 SF*
Suite 103	1st Floor	± 859 SF*
Suite 207	2nd Floor	± 2,300 SF

## For leasing information contact:

**Eileen Doody**

Principal, Healthcare, Leasing and Brokerage

eileen.doody@avisonyoung.com

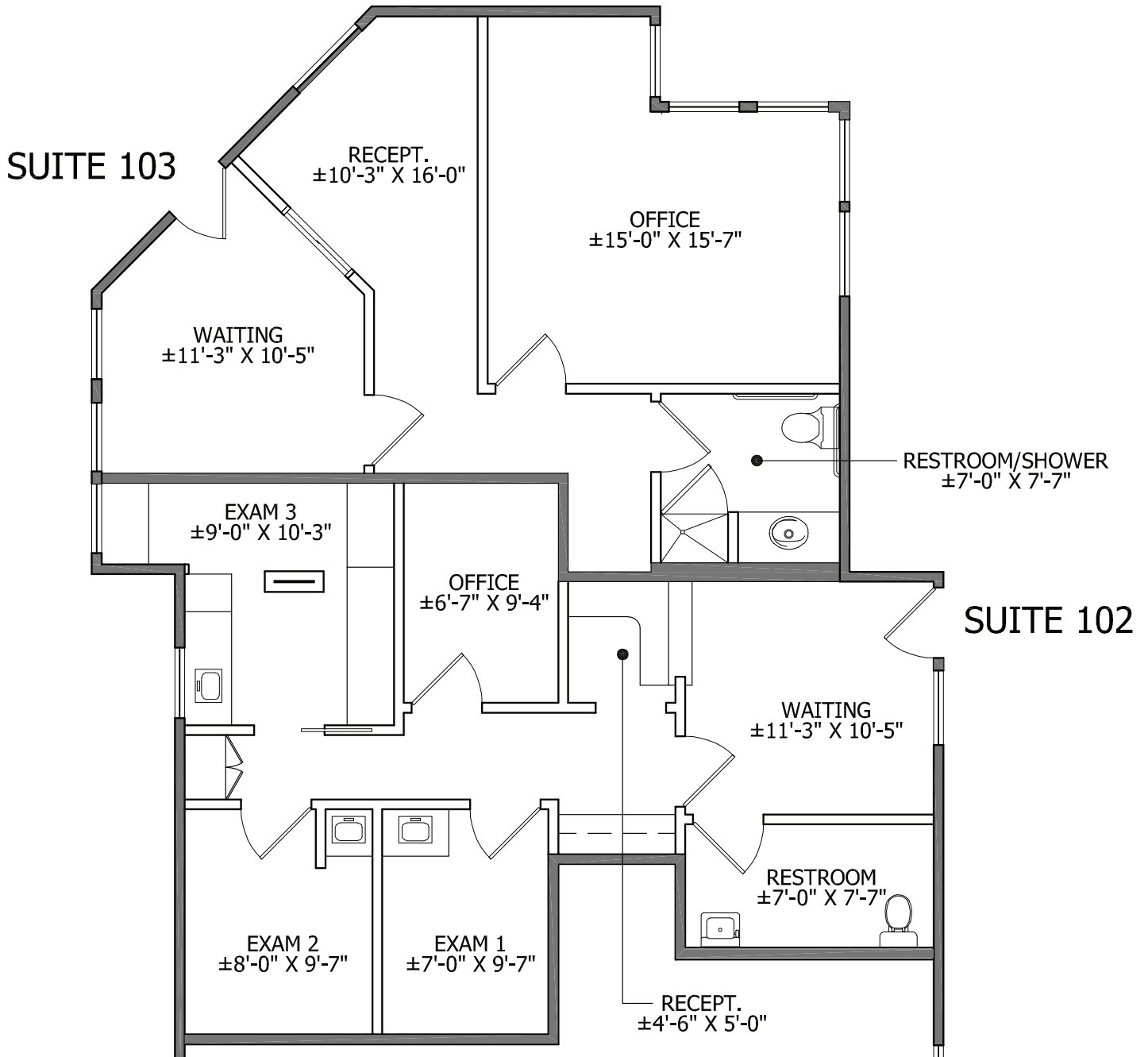
D: 949.390.5506

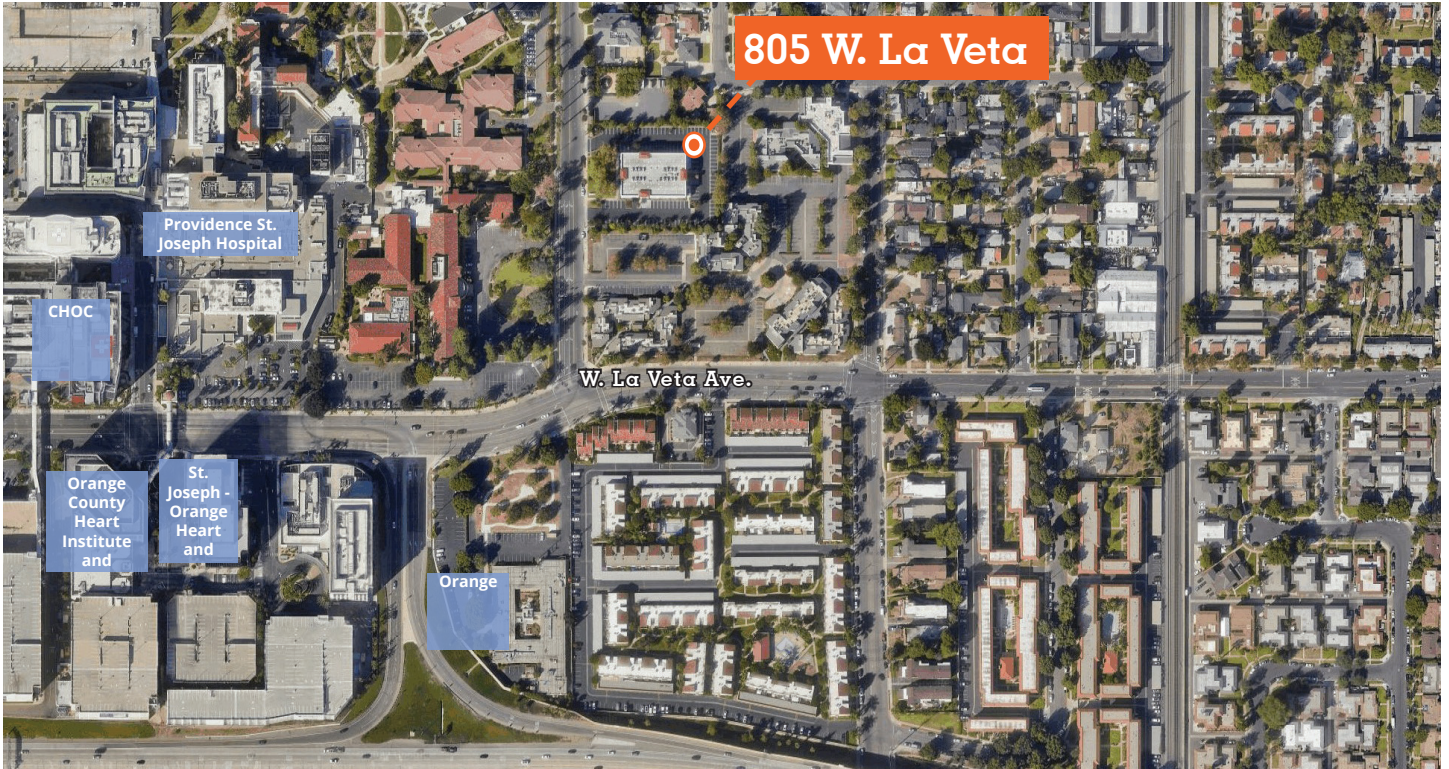
CA DRE Lic. #00965140

Suites 102 | ± 954 SF

Suites 103 | ± 859 SF

Suites 102 | 103 | ± 1,813 SF SF





**Suites 207 | ± 2,300 SF**

**Suite 209  
±898**

**Suite 207  
±2,300**

