



ZACUTO GROUP
COMMERCIAL REAL ESTATE

BURTS & ASSOCIATES
REAL ESTATE INVESTMENT SERVICES

INDUSTRIAL WAREHOUSE | STORAGE
13501 S. MAIN STREET
WEST RANCHO DOMINGUEZ



SUBLEASE

13501 S. MAIN STREET

WEST RANCHO DOMINGUEZ

LOS ANGELES, CA 90061

Gated industrial property with 1 dock high + ramp, office space and high ceilings.

Ideal for warehousing, distribution and storage.

SIZE ± 11,000 SF

RATE \$1.15/SF NNN
\$.18/SF nets

TERM Negotiable

PARKING Gated on-site



EL SEGUNDO

LAH



135TH STREET

13501 S. MAIN STREET
WEST RANCHO DOMINGUEZ

MAIN STREET

13501 S. MAIN STREET
WEST RANCHO DOMINGUEZ



LISTING TEAM



Jake Zacuto

Managing Director

310.469.9012

jake@zacutogroup.com

BRE #01377441

Justin Kreisberg

Senior Director

818.618.4890

justin@zacutogroup.com

BRE #02087507

BURTS & ASSOCIATES

REAL ESTATE INVESTMENT SERVICES

ERIC GIROD

Vice President

(310) 691-0146

ericgirod@gmail.com

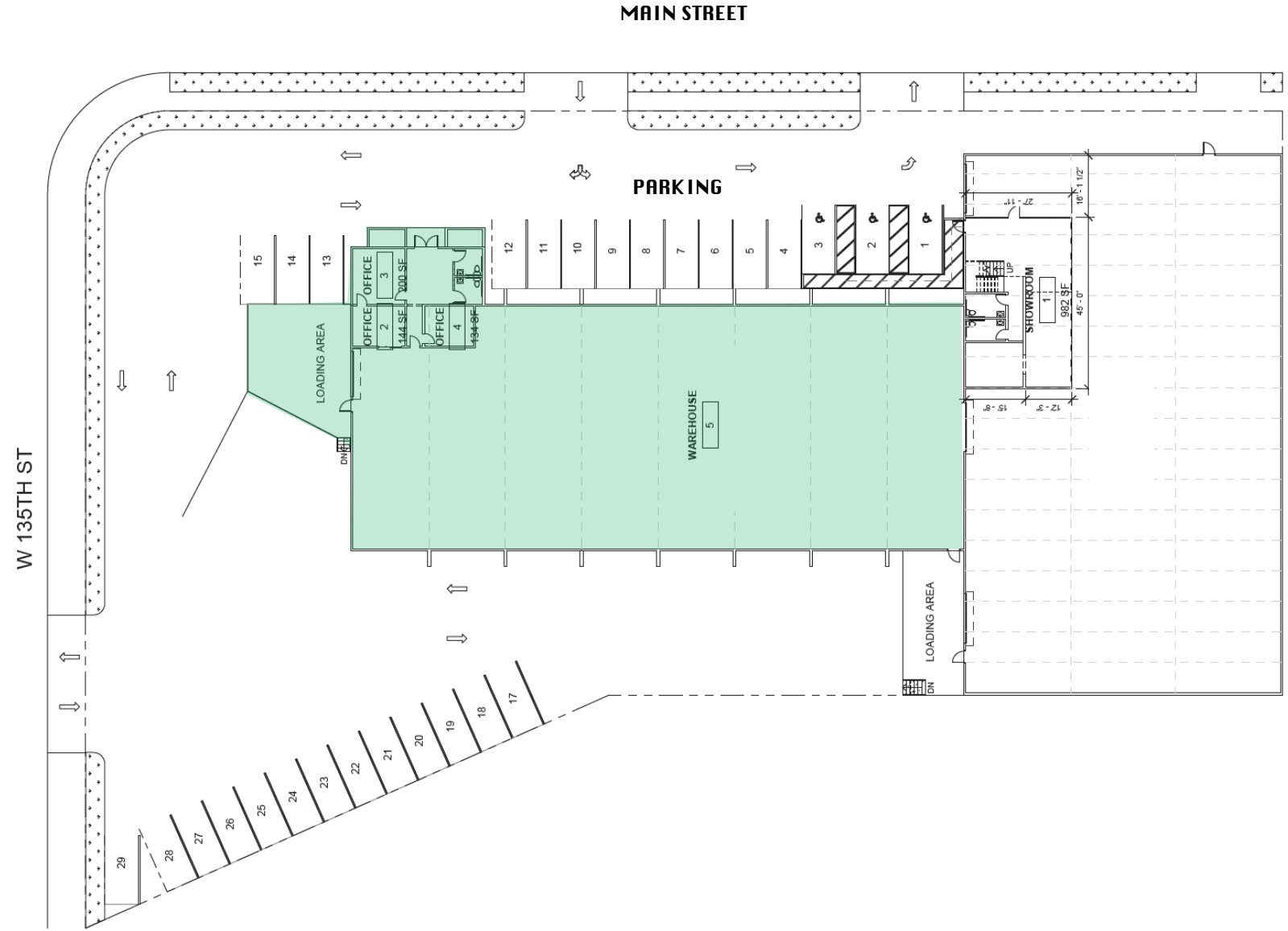
BRE# 00872949

Burts & Associates 01134271

SITE PLAN

13501 S. MAIN STREET
WEST RANCHO DOMINGUEZ

TOTAL SIZE	$\pm 11,000$ SF
WAREHOUSE	$\pm 9,835$
OFFICE	$\pm 1,165$ SF



13501 S. MAIN STREET
WEST RANCHO DOMINGUEZ



13501 S. MAIN STREET
WEST RANCHO DOMINGUEZ

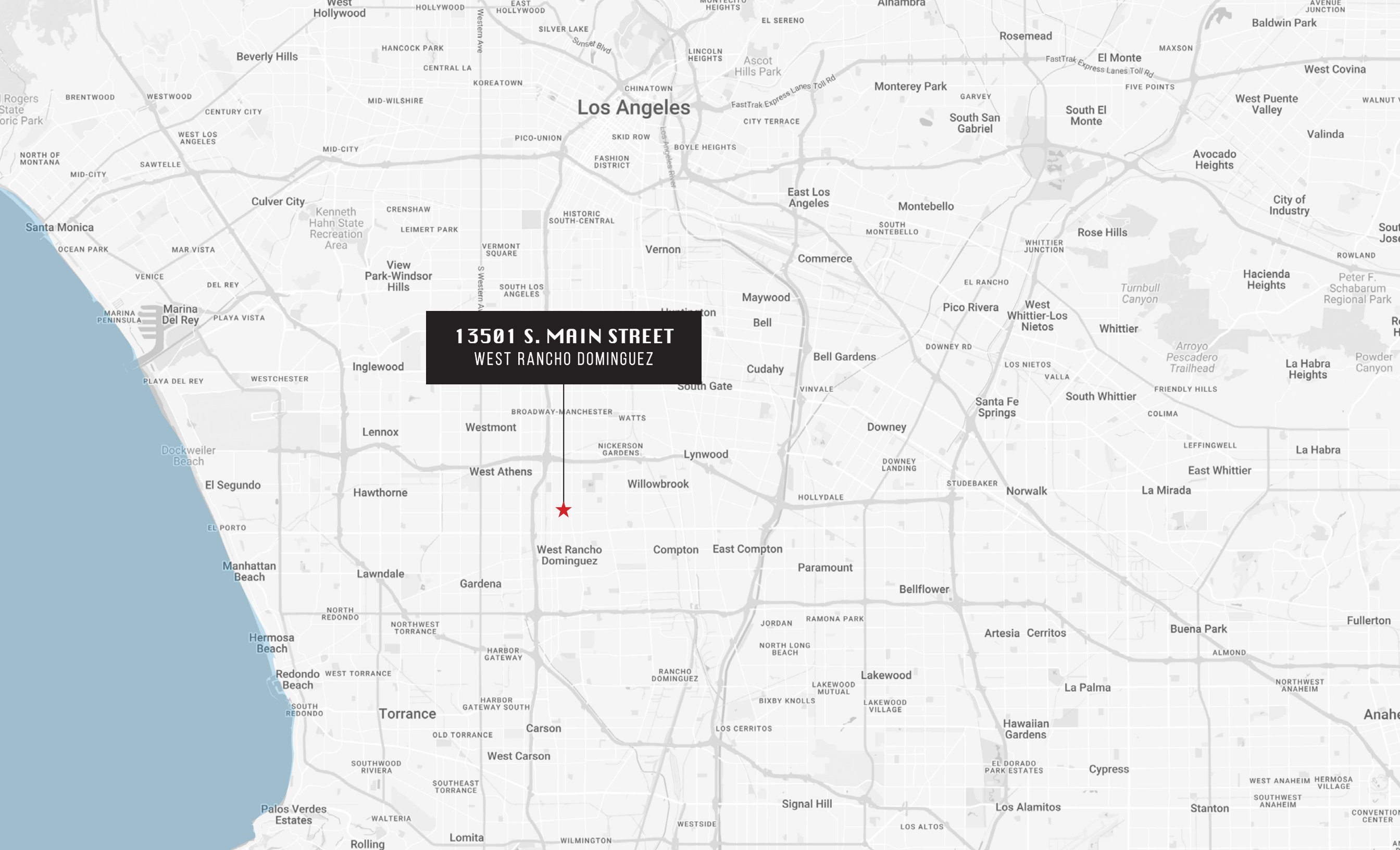


13501 S. MAIN STREET
WEST RANCHO DOMINGUEZ



13501 S. MAIN STREET
WEST RANCHO DOMINGUEZ





13501 S. MAIN STREET
WEST RANCHO DOMINGUEZ

13501 S. MAIN STREET
WEST RANCHO DOMINGUEZ
LOS ANGELES



Jake Zacuto

Managing Director

310.469.9012

jake@zacutogroup.com

BRE #01377441

Justin Kreisberg

Senior Director

818.618.4890

justin@zacutogroup.com

BRE #02087507

Eric Girod

Vice President

(310) 691-0146

ericgirod@gmail.com

BRE# 00872949

No warranty, express or implied, is made as to the accuracy of the information contained herein. This information is submitted subject to errors, omissions, change of price, rental or other conditions, withdrawal without notice. All parties who receive this material should not rely on it, but should use it as a starting point of analysis, and should independently confirm the accuracy of the information contained herein through a due diligence review of the books, records, files and documents that constitute reliable sources of the information described herein. Logos and images are for identification purposes only and may be trademarks of their respective companies. All terms provided are approximate. 1/2026