

LA JOLLA SUR

PACIFIC BEACH OFFICE
AVAILABLE FOR SUBLEASE



1010 TURQUOISE STREET, SUITES 101 & 225
SAN DIEGO, CALIFORNIA 92109



[CLICK HERE TO TAKE A VIRTUAL TOUR](#)

JON BOLAND, Senior Vice President, Partner

Lic #00999843 | 858.458.3312 | jboland@voitco.com

Voit
REAL ESTATE SERVICES

LA JOLLA SUR IS THE PREMIER OFFICE PROJECT OF PACIFIC BEACH & LA JOLLA



PROPERTY FEATURES

- » ±25,200 SF Office Building
- » Covered, Reserved Parking (2.00/1,000 SF)
 - \$80 / Monthly / Per Space
- » Zoned CC-4-2 / RM-1-1
- » Hydraulic Elevator
- » Ocean and Bay Views (Select Suites)
- » Second Floor Atrium
- » On-Site Day Porter
- » Numerous Walkable Retail Amenities
- » **Asking Rate:** \$2.75 + Electric PSF/Month
- » **Expenses:** Base Year

LEASE AVAILABILITY

- » **Suite 101** | ±1,259 RSF | **30-Day Notice**
 - Direct entry to main lobby
 - Sublease expires October 31, 2027
- » **Suite 225** | ±497 RSF | **30-Day Notice**
 - Direct entry to second floor atrium
 - Sublease expires October 31, 2027

JON BOLAND | Senior Vice President, Partner | Lic #00999843 | 858.458.3312 | jboland@voitco.com

4180 La Jolla Village Drive, Suite 100, La Jolla, CA 92037 • 858.453.0505 • 858.408.3976 Fax • Lic #01991785 • www.voitco.com

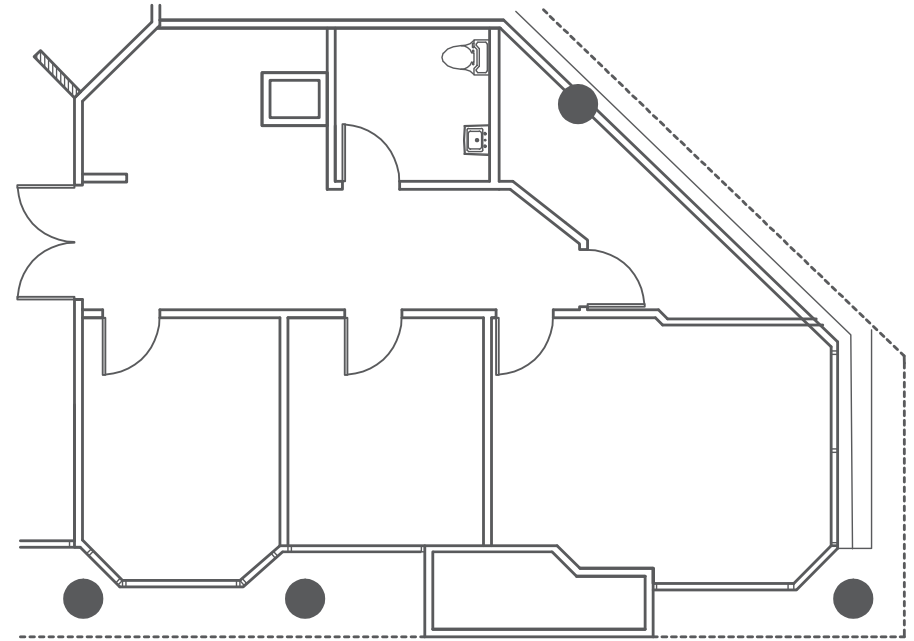
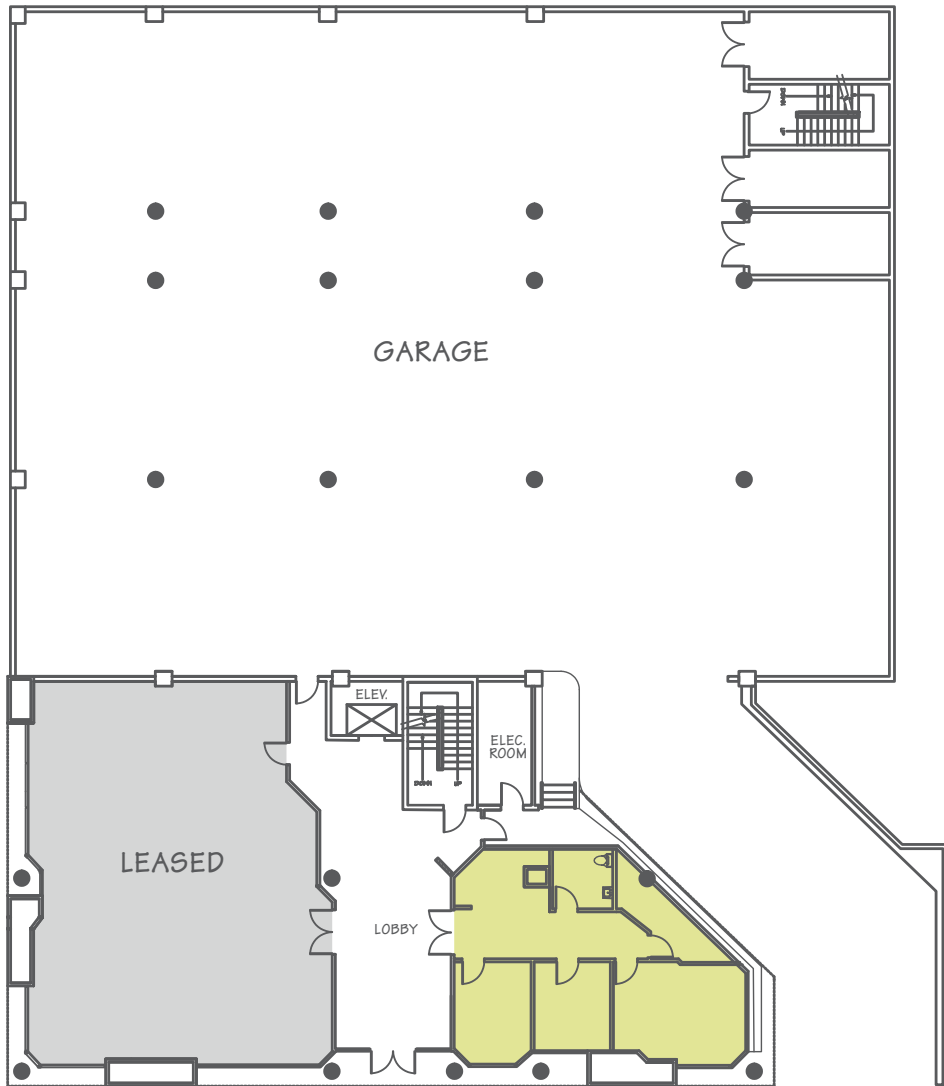
Licensed as a Real Estate Salesperson by the CA Bur of Real Estate. ©2026 Voit Real Estate Services, Inc. All Rights Reserved. The information contained herein has been obtained from sources we deem reliable. While we have no reason to doubt its accuracy, we do not guarantee it.

Voit
REAL ESTATE SERVICES

LA JOLLA SUR IS THE PREMIER OFFICE PROJECT OF PACIFIC BEACH & LA JOLLA

FIRST FLOOR

SUITE
101
±1,259 RSF



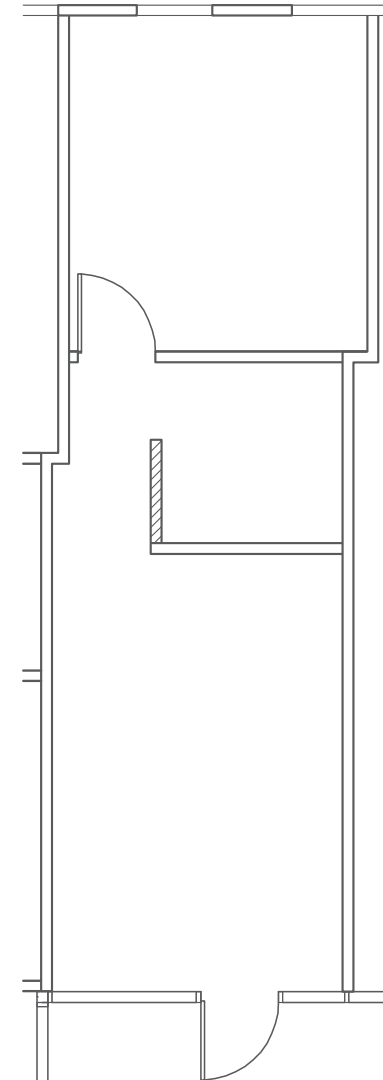
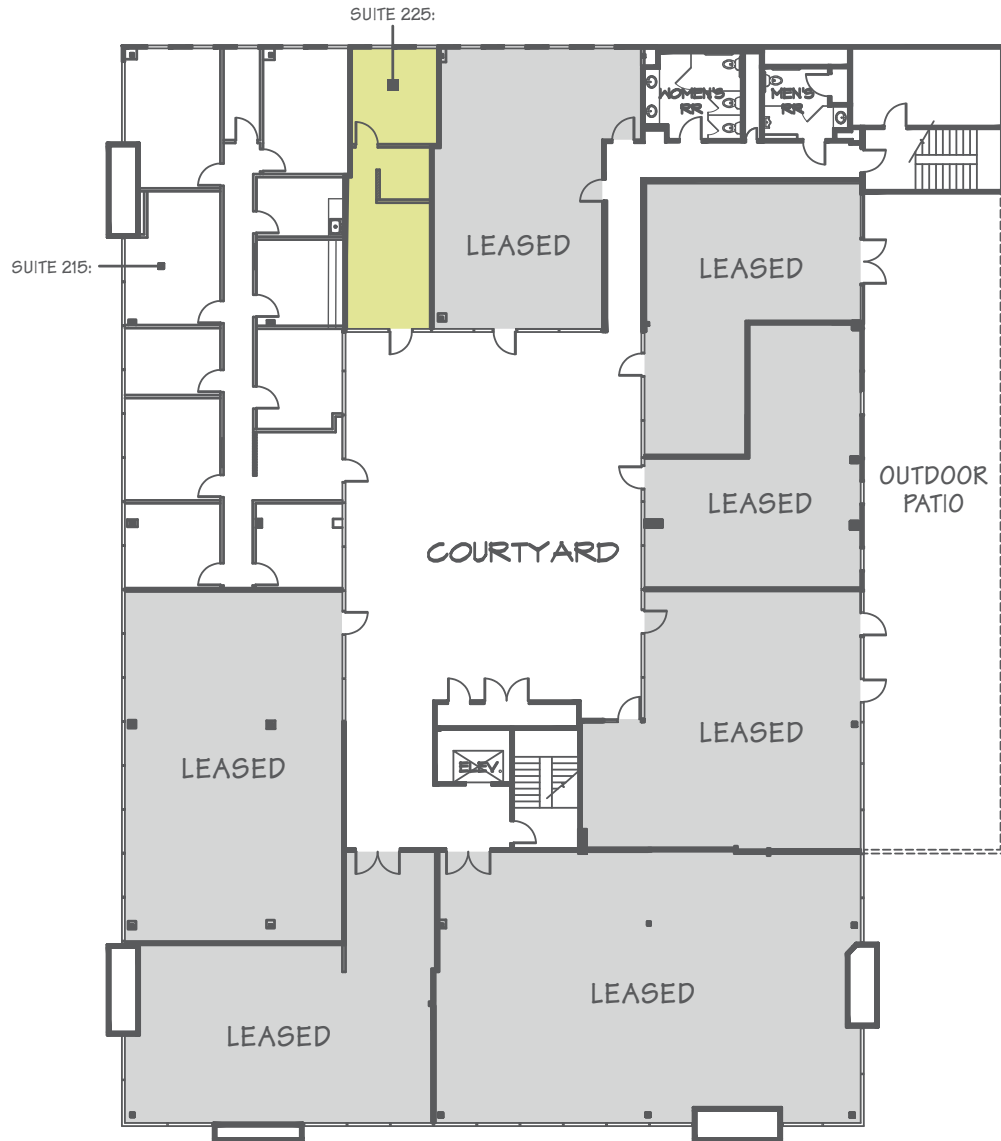
JON BOLAND | Senior Vice President, Partner | Lic #00999843 | 858.458.3312 | jboland@voitco.com

4180 La Jolla Village Drive, Suite 100, La Jolla, CA 92037 • 858.453.0505 • 858.408.3976 Fax • Lic #01991785 • www.voitco.com

Licensed as a Real Estate Salesperson by the CA Bur of Real Estate. ©2026 Voit Real Estate Services, Inc. All Rights Reserved. The information contained herein has been obtained from sources we deem reliable. While we have no reason to doubt its accuracy, we do not guarantee it.

Voit
REAL ESTATE SERVICES

LA JOLLA SUR IS THE PREMIER OFFICE PROJECT OF PACIFIC BEACH & LA JOLLA



SECOND FLOOR

**SUITE
225
±497 RSF**

JON BOLAND | Senior Vice President, Partner | Lic #00999843 | 858.458.3312 | jboland@voitco.com

4180 La Jolla Village Drive, Suite 100, La Jolla, CA 92037 • 858.453.0505 • 858.408.3976 Fax • Lic #01991785 • www.voitco.com

Licensed as a Real Estate Salesperson by the CA Bur of Real Estate. ©2026 Voit Real Estate Services, Inc. All Rights Reserved. The information contained herein has been obtained from sources we deem reliable. While we have no reason to doubt its accuracy, we do not guarantee it.

Voit
REAL ESTATE SERVICES

LA JOLLA SUR IS THE PREMIER OFFICE PROJECT OF PACIFIC BEACH & LA JOLLA



JON BOLAND | Senior Vice President, Partner | Lic #00999843 | 858.458.3312 | jboland@voitco.com

4180 La Jolla Village Drive, Suite 100, La Jolla, CA 92037 • 858.453.0505 • 858.408.3976 Fax • Lic #01991785 • www.voidco.com

Licensed as a Real Estate Salesperson by the CA Bur of Real Estate. ©2026 Voit Real Estate Services, Inc. All Rights Reserved. The information contained herein has been obtained from sources we deem reliable. While we have no reason to doubt its accuracy, we do not guarantee it.

Voit
REAL ESTATE SERVICES