

**PARKWAY**



# Cypress Center I

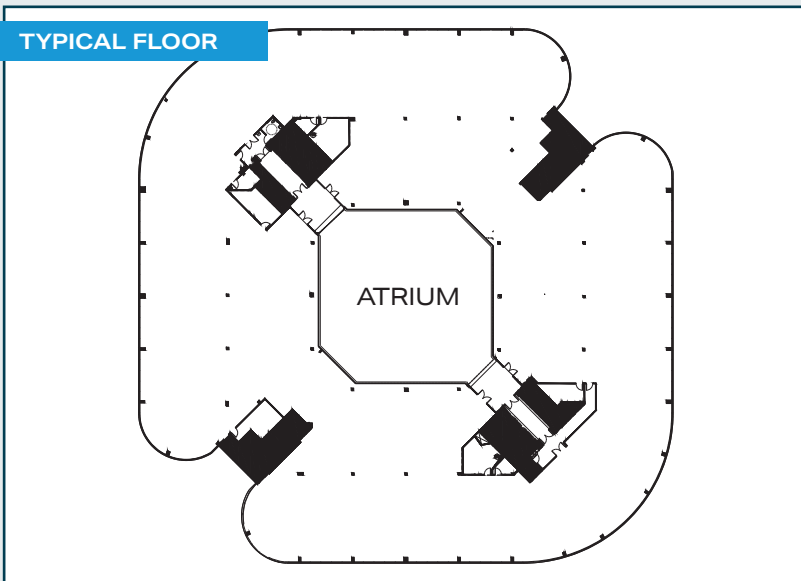


**Nancy Herz**  
813.505.7962 | [nherz@pky.com](mailto:nherz@pky.com)

## LOBBY



## TYPICAL FLOOR



## LOCATION



# Cypress Center I

## SPECIFICATIONS

Location:	5404 Cypress Center Dr. Tampa, FL
Submarket:	Westshore
Size:	153,000 ± RSF
Stories:	3
Parking:	4/1,000 RSF

## FEATURES & AMENITIES

- + Serene office park setting
- + Central conference facility
- + On-campus cafe
- + On-campus fitness center
- + Ample visitor parking
- + Fast and responsive management
- + Security patrol

## LOCATION

- + Convenient access to I-275 & Veterans Expressway
- + 5 minutes to Tampa International Airport
- + 10 minutes to downtown Tampa
- + Numerous restaurants, shopping, banks & hotels nearby
- + Easy access to major labor markets