



624 S. MAIN STREET

BEL AIR, MARYLAND 21014

FOR
LEASE



MACKENZIE

COMMERCIAL REAL ESTATE SERVICES, LLC

PROPERTY OVERVIEW

HIGHLIGHTS:

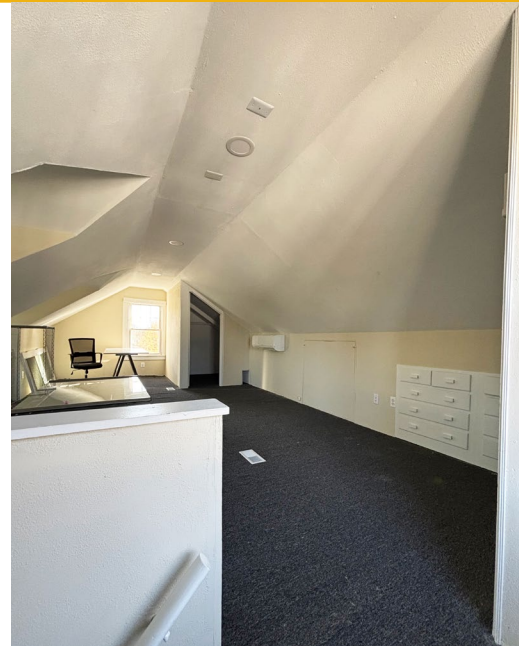
- Recently renovated office space
- Handicap accessible
- Plenty of on-site parking
- Great visibility on corner lot with direct access to 924
- Multiple nearby amenities
- Close proximity to downtown Bel Air
- Roof recently installed
- 4 fully renovated floors with 3 bathrooms



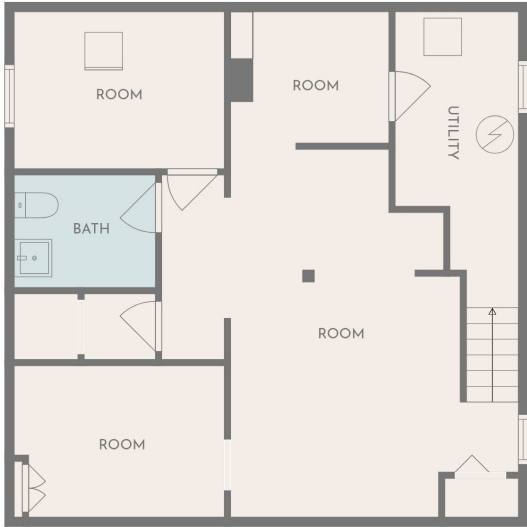
BUILDING SIZE:	2,000 SF ±
SITE SIZE:	0.32 ACRES ±
YEAR BUILT:	1920
STORIES:	2
ZONING:	B1
RENTAL RATE:	\$3,850/MO, MG



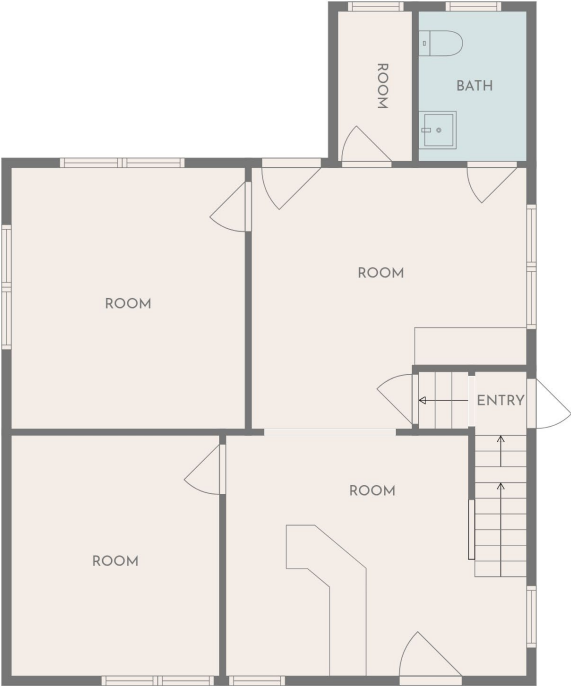
INTERIOR PHOTOS



FLOOR PLANS



Basement

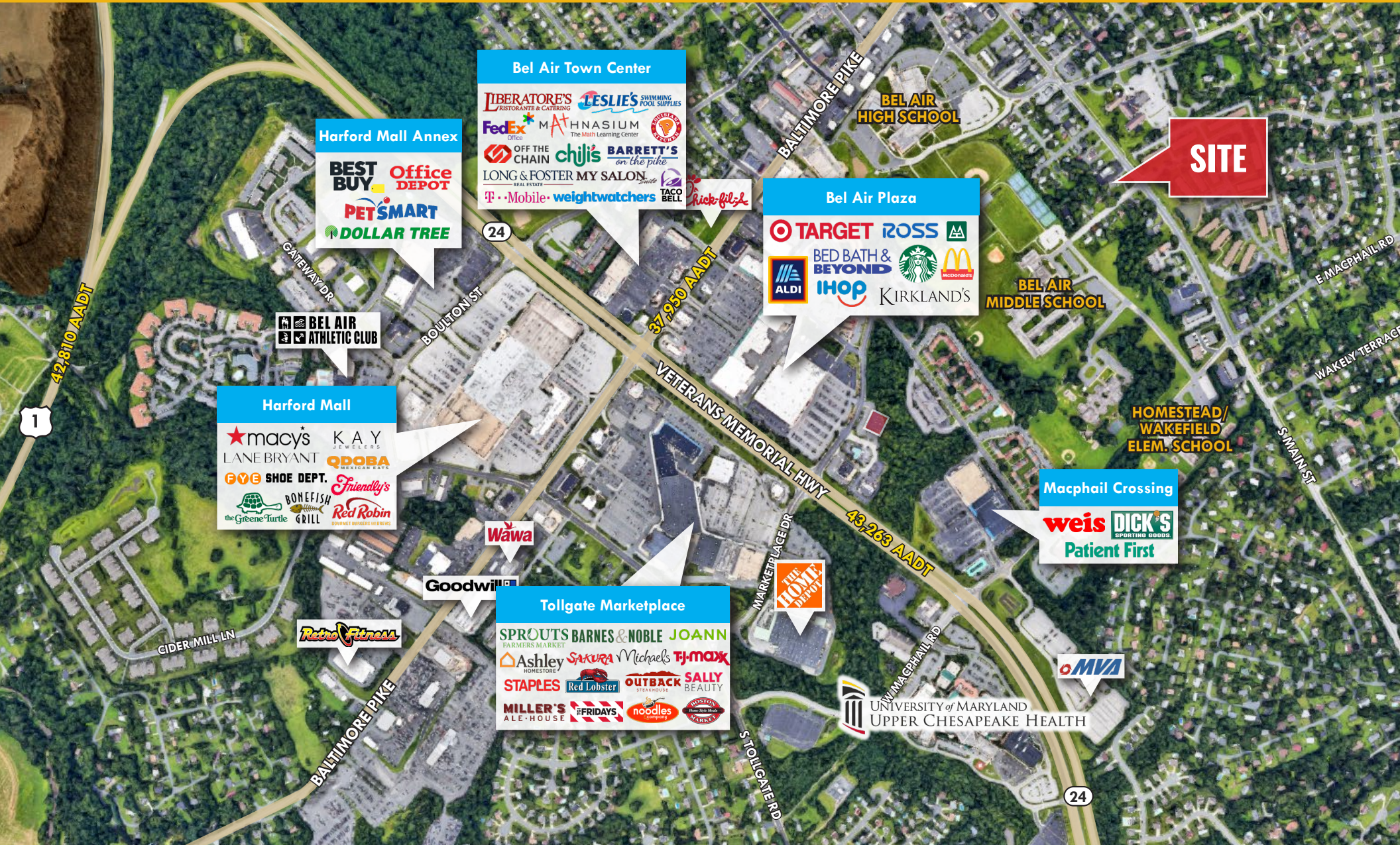


First Floor



Second Floor

MARKET AERIAL



FOR MORE INFO **CONTACT:**



TOM MOTTLEY

SENIOR VICE PRESIDENT & PRINCIPAL

443.573.3217

TMOTTLEY@mackenziecommercial.com



BEETLE SMITH

SENIOR VICE PRESIDENT

443.573.3219

BSMITH@mackenziecommercial.com



JOHN MICHAEL

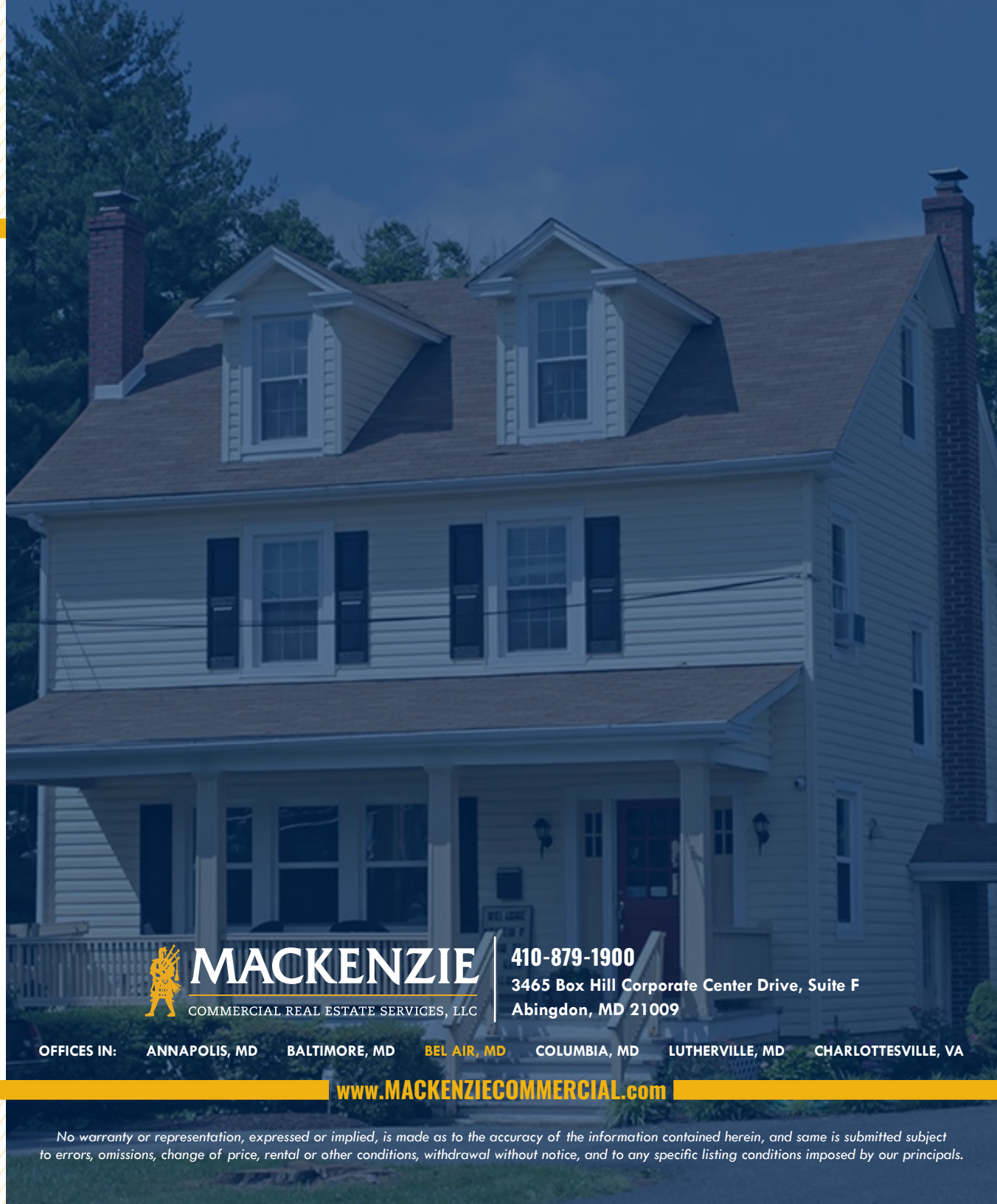
REAL ESTATE ADVISOR

443.573.3207

JMICHAEL@mackenziecommercial.com



VISIT **PROPERTY PAGE** FOR MORE INFORMATION.



MACKENZIE

COMMERCIAL REAL ESTATE SERVICES, LLC

410-879-1900

**3465 Box Hill Corporate Center Drive, Suite F
Abingdon, MD 21009**

OFFICES IN: ANNAPOLIS, MD BALTIMORE, MD **BEL AIR, MD** COLUMBIA, MD LUTHERVILLE, MD CHARLOTTESVILLE, VA

www.MACKENZIECOMMERCIAL.com

No warranty or representation, expressed or implied, is made as to the accuracy of the information contained herein, and same is submitted subject to errors, omissions, change of price, rental or other conditions, withdrawal without notice, and to any specific listing conditions imposed by our principals.