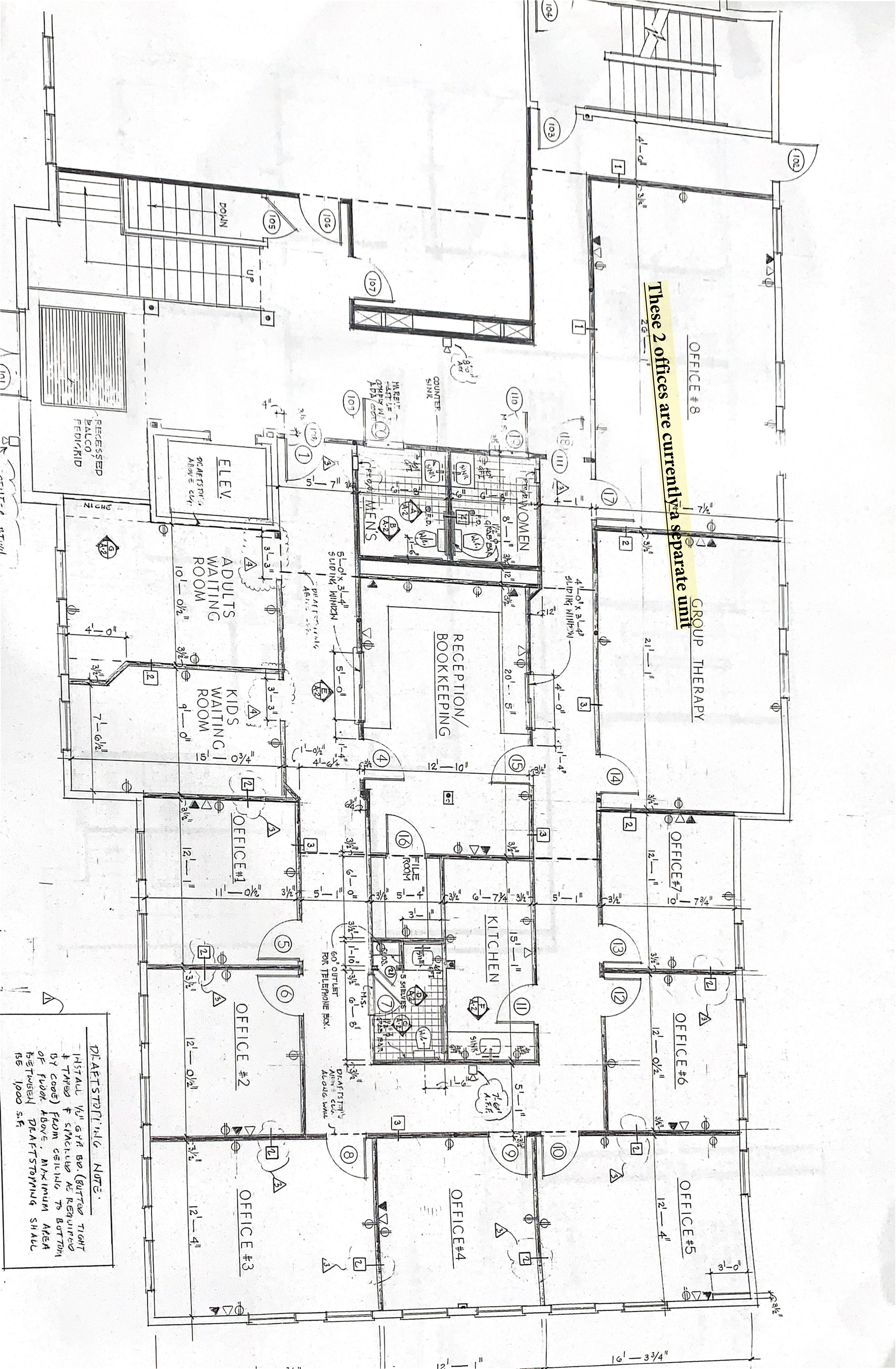


These 2 offices are currently a separate unit



DRAFTSMAN'S NOTE:
 INSTALL 1/2" GYR BR. (BUTTER TIGHT & TAPED & SPACED AS REQUIRED BY CODE) FROM CEILING TO BOTTOM OF FLOOR ABOVE. MAXIMUM AREA BETWEEN DRAFTSMAN SHALL BE 1000 S.F.