

# 300 ROUNDHILL DRIVE - UNIT 4 ROCKAWAY, NJ



**FOR LEASE - AVAILABLE IMMEDIATELY!**

CORNER UNIT WITH EXCELLENT TRUCK ACCESS AND SUPERIOR MANEUVERABILITY

## PROPERTY SPECS:

Available Space:	10,536 SF
Office Space:	± 3,090 SF
Total Bldg. Size:	± 45,000 RSF
Ceiling Height:	22' clear
Parking:	2.5 cars per 1,000 SF
Loading:	2 covered tailgate doors
Power:	375 amps/480V 3-phase
Available:	Immediately
Lease Rate:	Upon Request
Taxes & CAM:	± \$4.50 PSF NNN

## REAR OF BUILDING:



For more information, please contact our office at 973-299-0900 or:

Brian Wilson, SIOR  
C: 973-219-1331

E: [bwilson@resource-realty.com](mailto:bwilson@resource-realty.com)

Gregory J. Sabato, SIOR  
C: 908-403-5559

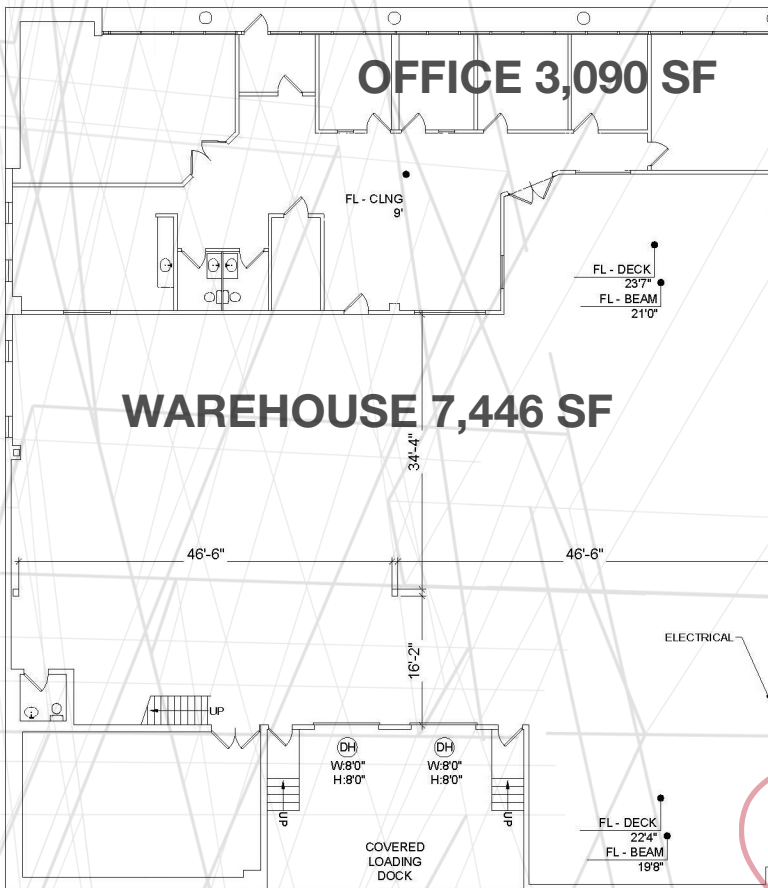
E: [gsabato@resource-realty.com](mailto:gsabato@resource-realty.com)



Faropoint

**WWW.RESOURCE-REALTY.COM**

# FLOOR PLAN:

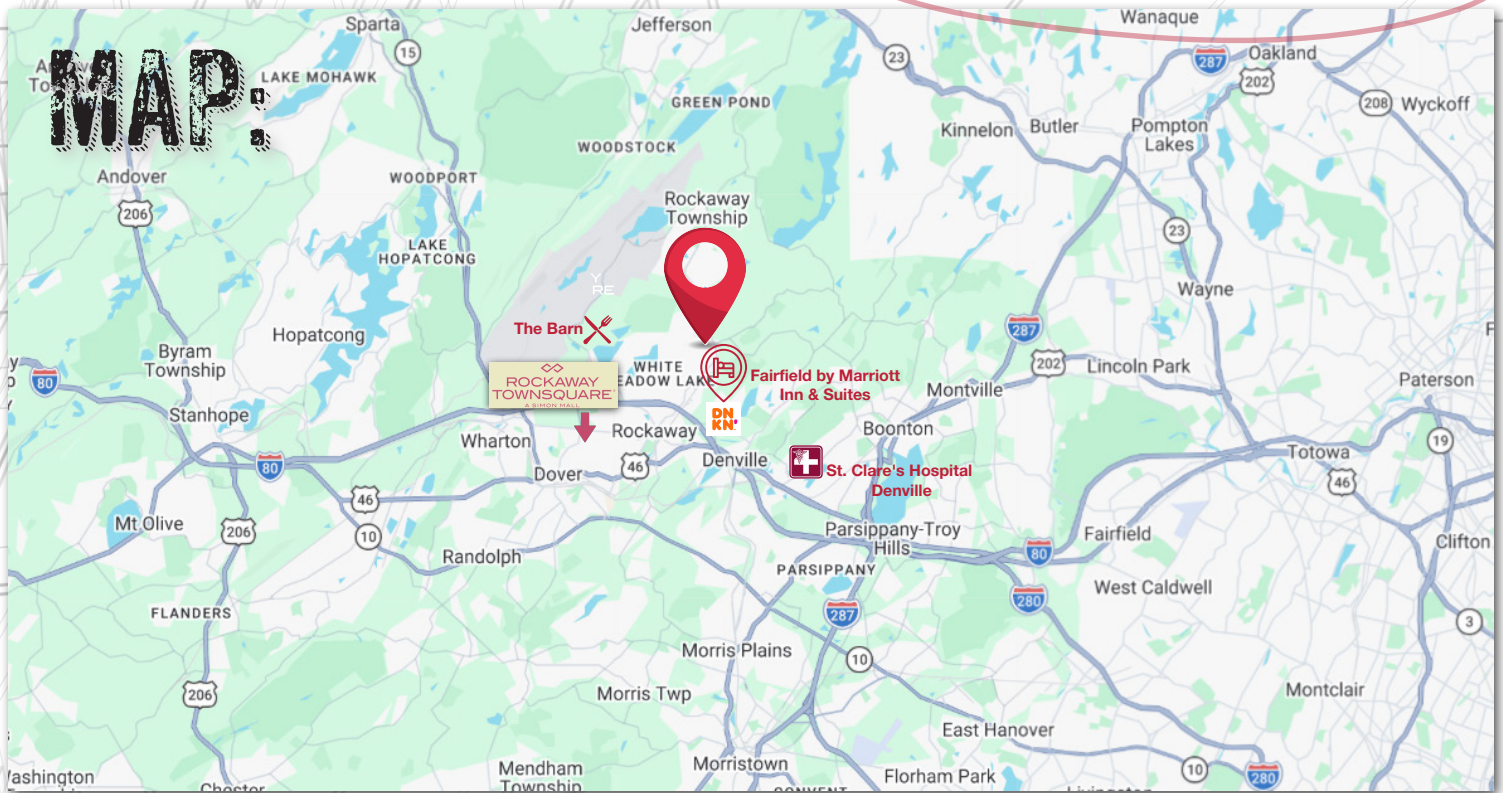


# PARCEL MAP:



300 Round Hill Dr, Rockaway, NJ Parcel Map

*Conveniently located directly off of Green Pond Road, at Exit 37, off Route 80. Bonus mezzanine warehouse storage!*



All information furnished is from sources deemed reliable. No representation is made as to the accuracy thereof and it is submitted subject to error, omission, change of price, prior sale or lease and withdrawal without notice. Any commission due cooperating brokers is subject to all of the terms and conditions upon which we and our clients have agreed.