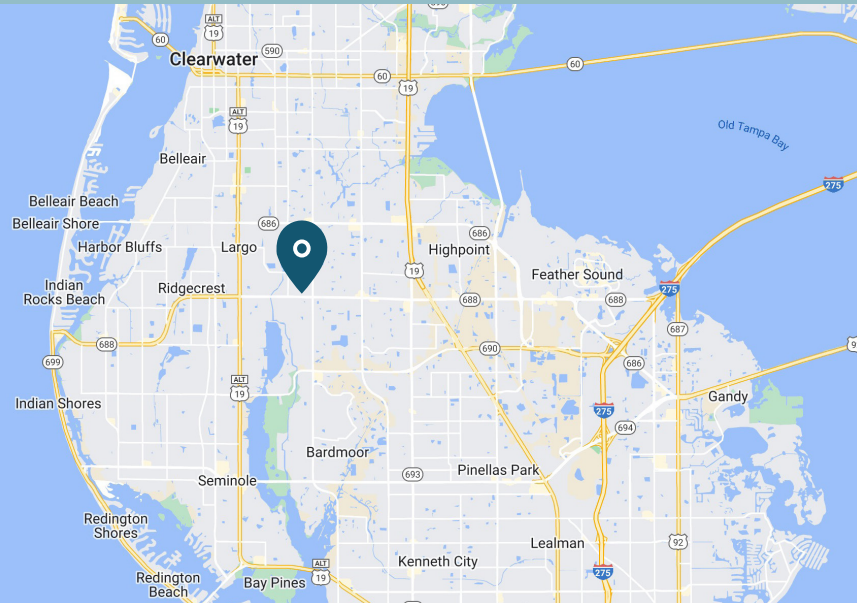


2063 20TH AVE SE

 Largo, FL 33771

+/-10.49 Acres For Lease



DRONE VIDEO
CLICK TO EXPLORE

PROPERTY HIGHLIGHTS

- 4,400 SF building on site
- Located in a well-established industrial submarket (Mid-Pinellas)
- I-Heavy Industrial zoning designation affords the widest variety of land uses, highest intensities, and limited site design standards
- Excellent access to nearby and regional locations, including Ulmerton Road, Starkey Road, Gulf Beaches, Howard Frankland Bridge, Courtney Campbell Causeway, Gandy Bridge, Downtown Clearwater, and Downtown St. Petersburg
- 9 miles to St. Pete-Clearwater International Airport

BRAD HUTTON | Director

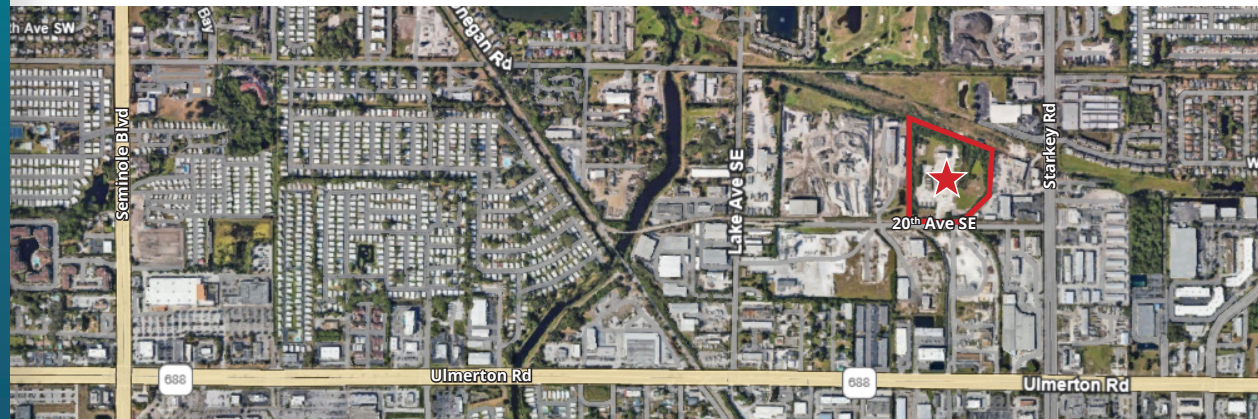
813.793.8492 | Brad.Hutton@FranklinSt.com

PATRICK KELLY | Regional Managing Director

813.682.6210 | Pat.Kelly@FranklinSt.com

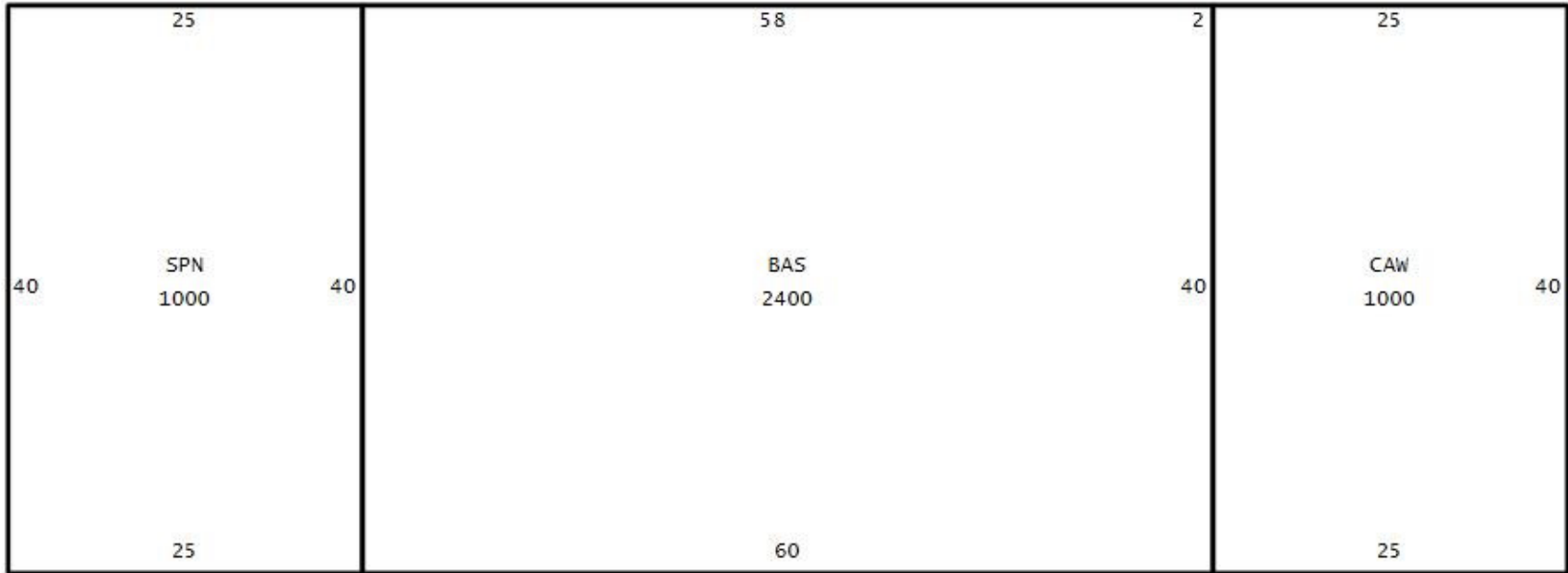
 **FranklinStreet**

LICENSED REAL ESTATE BROKER | FranklinSt.com



BUILDING FLOOR PLAN

4,400 SF Available



2063 20th Avenue SE
Largo, FL 33771

+/-10.49 ACRES FOR LEASE



 **FranklinStreet**

LICENSED REAL ESTATE BROKER | FranklinSt.com

BRAD HUTTON
Director

813.793.8492

Brad.Hutton@FranklinSt.com

PATRICK KELLY
Regional Managing Director

813.682.6210

Pat.Kelly@FranklinSt.com