

# 7,650 SF AVAILABLE



**25-66 BOROUGH PLACE**  
**WOODSIDE, NY**

**APRIL 1<sup>ST</sup> OCCUPANCY**

**16' CLEAR**  
**400 AMPS**  
**8% FINISH**  
**(1) DRIVE-IN DOOR**  
**BROKERS PROTECTED**







# 25-66 BOROUGH PLACE, WOODSIDE, NY

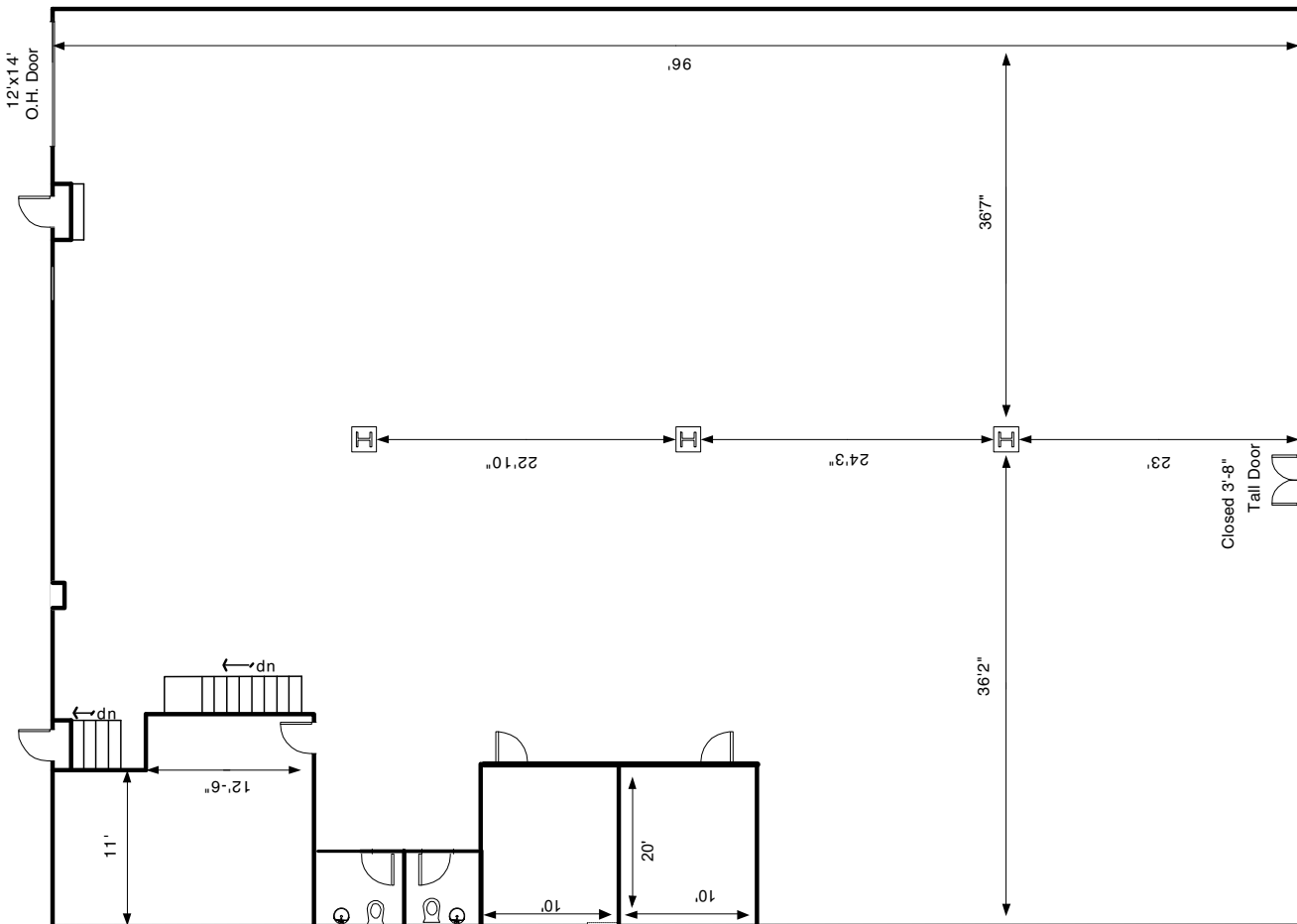
## APRIL 1<sup>ST</sup> OCCUPANCY

### 7,650 SF INDUSTRIAL UNIT



- (1) DRIVE-IN
- (2) BATHROOMS
- 16' CLEAR UNDER CONCRETE ROOF
- 400 AMP ELECTRIC SERVICE
- 8% FINISH
- AC IN OFFICES
- GAS HEAT IN WAREHOUSE
- LED LIGHTING THROUGHOUT
- PERFECT FOR LIGHT MANUFACTURING, STORAGE OR SERVICE RELATED USE

- .3 MILES SOUTH OF THE GCP & BQE MERGE
- .6 MILES NORTH OF ROUTE 25A 
- 1 MILE FROM 4 SUBWAY ENTRANCES:
  - NORTHERN BLVD: 1 MILE 
  - 65 STREET: 1 MILE 
  - ASTORIA-DITMARS BLVD: 1.2 MILES 
  - ASTORIA BLVD: 1.4 MILES 
- 1.5 MILES TO MTA BUS TRANSPORT HUBS 
- 2.5 MILES TO LAGUARDIA AIRPORT
- CENTRALIZED LOCATION FOR SIMPLIFIED COMMUTING AND FREIGHT LOGISTICS



DANA GUCCIARDO, DIRECTOR OF LEASING | M: 516-509-4945 O: 631-420-0070 | DANA@BRENTMAKO.COM



BRENTMAKO  
REAL ESTATE GROUP

The information contained herein is subject to error, change, and actual field conditions.