

R/O, 95A Prince Avenue,
Southend-on-Sea,
Essex, SS2 6RL.



TO LET - SECURE LOCK UP UNIT AND YARD.



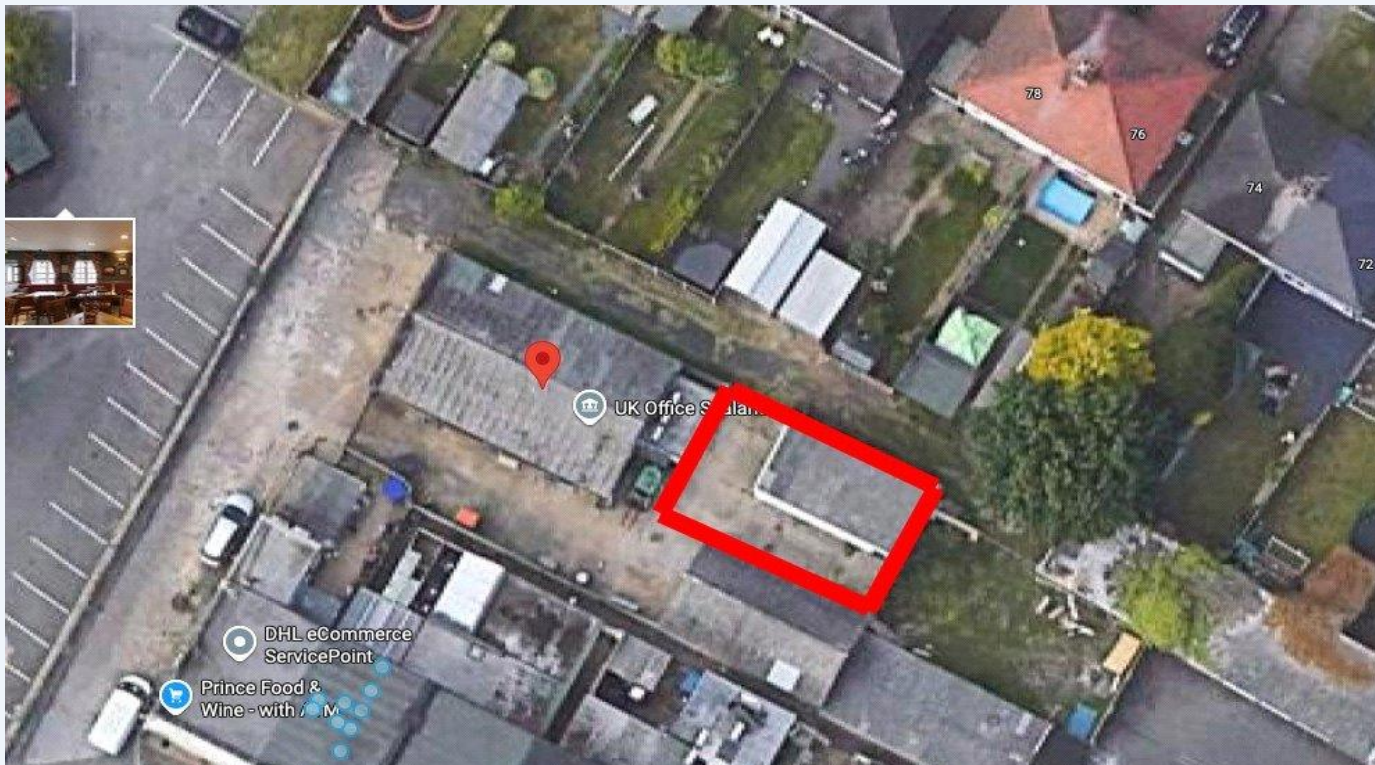
Dedman Gray Commercial are pleased to offer this secure gated lock up unit with yard space to the front and side. The unit benefits from 3 phase power and is located just off Prince Avenue.

Accommodation:

The following measurement have been taken on a Gross Internal Basis (GIA): Unit Approx: 478 sq. ft. (44 Sq. M.)

Planning:

Interested parties are recommended to make their own enquiries with the Local Planning Authority to ensure that any proposed use is in accordance with the current planning policy. Telephone Southend City Council on 01702 215000.



Business Rates:

Interested parties are advised to seek verification from Southend Borough Council on 01702 215001.

Features:

- Good Transport Links
- 3 Phase Power
- Easy Access
- Ideal for Storage / Workshop
- Suit a Variety of Uses

Terms:

New lease to be granted subject to a rent of £9,000 per annum. Terms to be negotiated

Viewing:

For further information or to arrange a viewing please contact Matt Parsons 01702 311143
matt@dedmangray.co.uk

Price: £750 pm (Plus VAT if applicable).