

620

ENTERPRISE DRIVE OAK BROOK



620 Enterprise
Site Plan



12,397 SF
Office Space

5,988 SF
Warehouse Space
Plus Additional
Mezzanine Storage

18,385 Available
Square Feet

Covered Docks (X2)



Drive-In Door



42 Parking Spaces



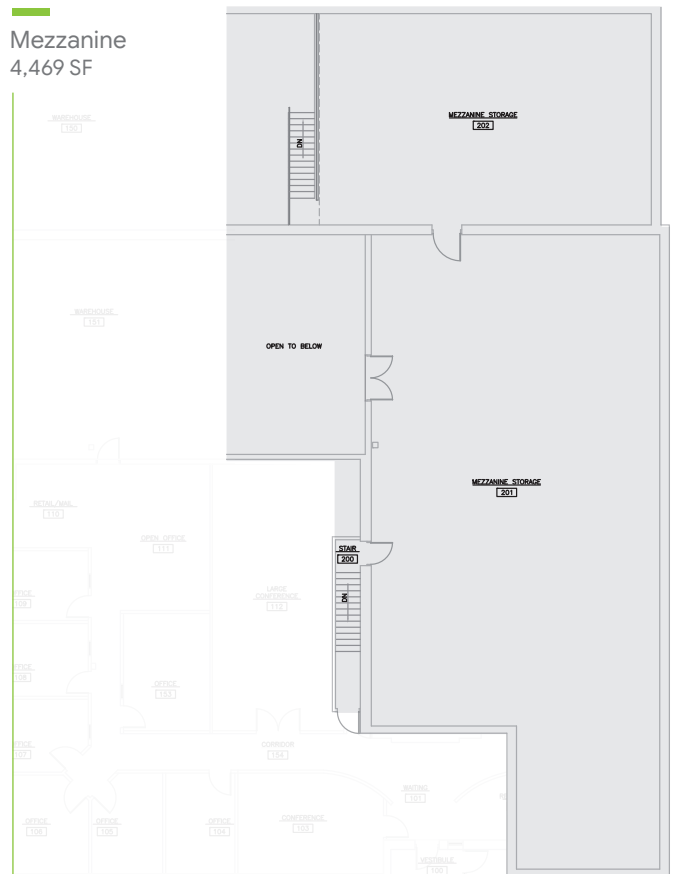
16 FT Clear Height



Signage Visible via I-88



Mezzanine
4,469 SF





Map Location Directory

- Restaurants
- Entertainment
- Retail Stores
- Hotels / Hospitality

- 1 First Watch Brunch
- 2 Nordstrom Rack
- 3 World Market
- 4 DSW Footwear
- 5 Old Navy
- 6 Nike Factory Store
- 7 Holiday Inn - IHG
- 8 Costco Wholesale
- 9 Lazy Dog
- 10 Panera Bread
- 11 Smashburger
- 12 Kura Sushi
- 13 Bibibop
- 14 Blackwood BBQ
- 15 REI Outdoor Sports
- 16 Lizzardo Art Museum
- 17 Cheesecake Factory
- 18 Fogo De Chão
- 19 Beatrix
- 20 Pinstripes
- 21 J. Alexander's
- 22 Gibson's Steakhouse
- 23 Perry's Steakhouse
- 24 Antico Posto
- 25 AMC Theatres
- 26 Pinstripes
- 27 Sandbox VR
- 28 Immersive Gamebox
- 29 Escape the Room
- 30 Nordstrom
- 31 Macy's
- 32 Crate & Barrel
- 33 Barnes & Noble
- 34 Le Méridien Hotel
- 35 Marriot Hotel
- 36 Double Tree Hotel
- 37 Hilton Suites
- 38 Drury Lane Theatre
- 39 Hilton Garden Inn
- 40 Oakbrook Golf Club
- 41 Roti Mediterranean
- 42 Jason's Deli
- 43 CFS Coffee
- 44 Protien Bar
- 45 The Drake Oakbrook
- 46 Hyatt House Hotel

Map Legend and Color Guide

- ★ 620 Enterprise Drive
- Restaurants
- Entertainment
- Retail Stores
- Hotels / Hospitality





620

ENTERPRISE DRIVE
OAK BROOK

PROPERTY CONTACT

Steve Chrastka
(630) 317-0746
Schrastka@Hiffman.com

NAI HIFFMAN DETAILS

Hiffman.com
One Oakbrook Terrace, Suite 400
Oakbrook Terrace, IL 60181

NAIHiffman