

**RETAIL SPACE FOR LEASE**  
**SAFeway SHOPPING CENTER**  
 2828 COUNTRY CLUB BLVD., STOCKTON, CA



**LISTING DATA:**

Location: 2828 Country Club Blvd., Stockton, CA  
 Available Space: 900± square feet

Major tenants in the immediate trade area include:  
 Safeway, Big Lots and Subway



DEMOGRAPHICS:	1 mile	3 miles	5 miles
Population:	15,939	105,572	273,840
Income:	\$74,948	\$84,408	\$75,704

TRAFFIC COUNTS: Country Club Blvd: 15,349± Cars ADT



**ECONOMIC DATA**  
**CALL FOR LEASE RATE**

**CONTACT**

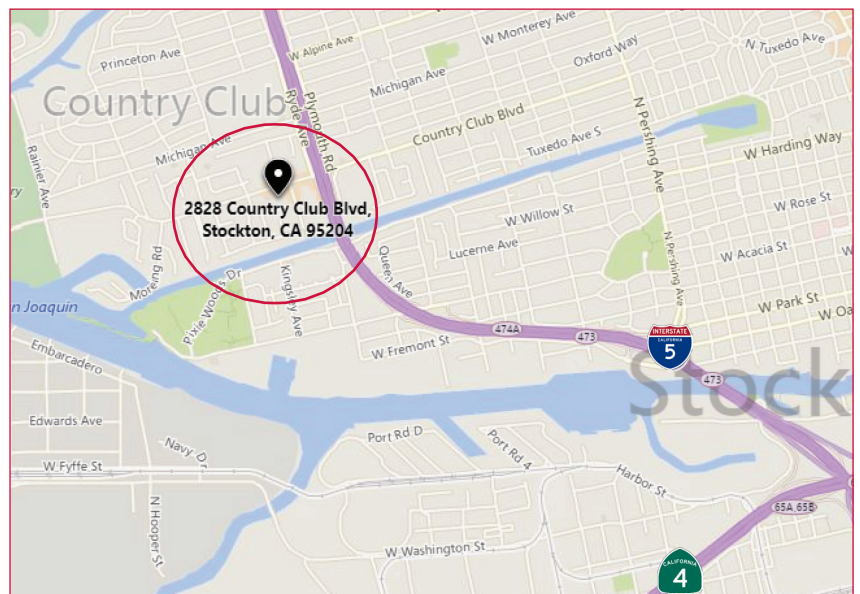
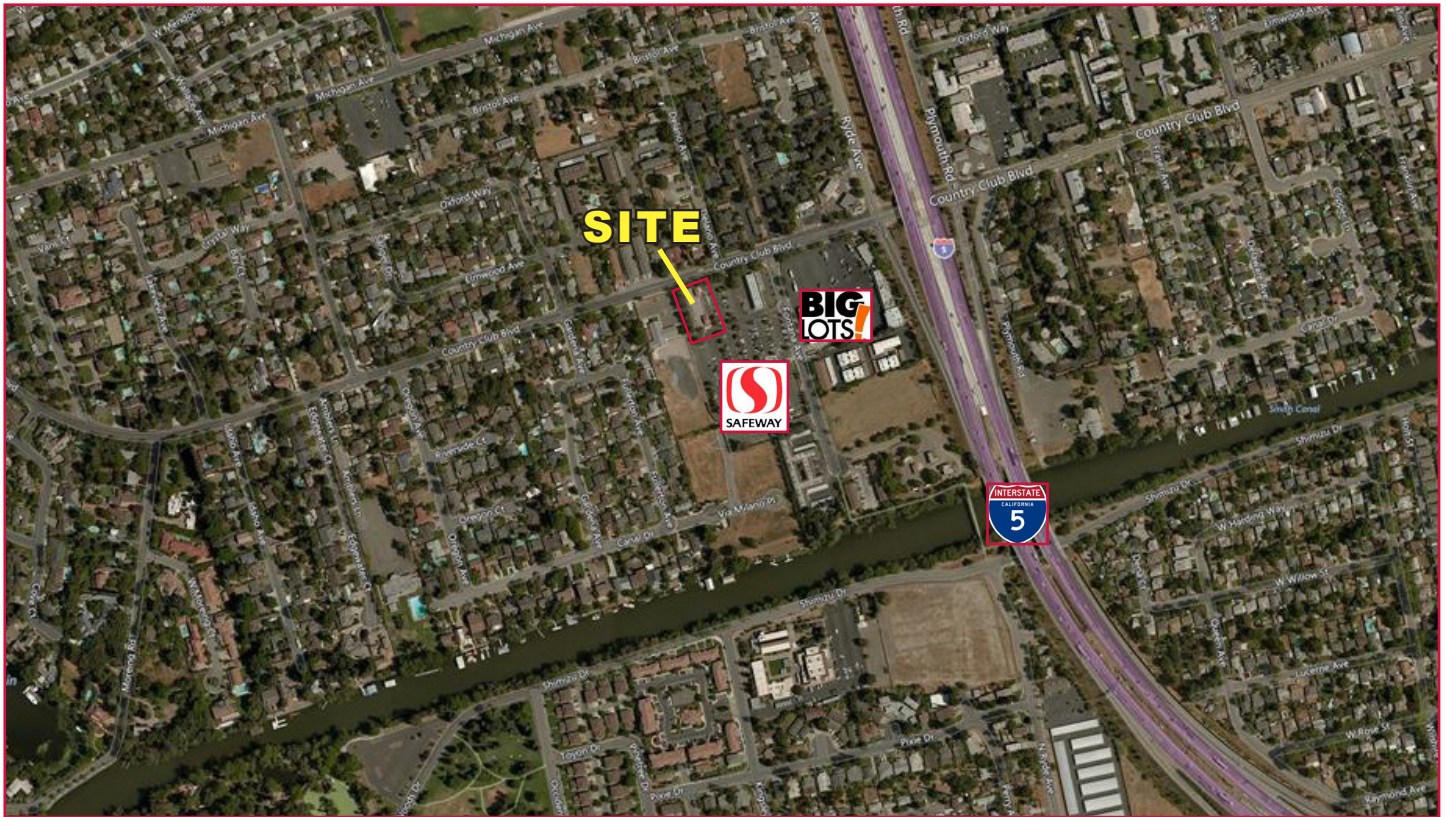
Christopher W. Sill  
 BRE # 01188616  
 csill@lee-associates.com  
 D 209.983.6837

All information furnished regarding property for sale, rental or financing is from sources deemed reliable, but no warranty or representation is made to the accuracy thereof and same is submitted to errors, omissions, change of price, rental or other conditions prior to sale, lease or financing or withdrawal without notice. No liability of any kind is to be imposed on the broker herein.

# RETAIL SPACE FOR LEASE

## SAFeway SHOPPING CENTER

2828 COUNTRY CLUB BLVD., STOCKTON, CA



### CONTACT

Christopher W. Sill  
BRE # 01188616  
csill@lee-associates.com  
D 209.983.6837

All information furnished regarding property for sale, rental or financing is from sources deemed reliable, but no warranty or representation is made to the accuracy thereof and same is submitted to errors, omissions, change of price, rental or other conditions prior to sale, lease or financing or withdrawal without notice. No liability of any kind is to be imposed on the broker herein.