

# ALTA FRENCH HILL

303 LINCOLN STREET | MARLBOROUGH, MA 01752

AVAILABLE 3,555 SF

A NEW DEVELOPMENT BY



## PROPERTY INFORMATION

- 4.5 acre mixed-use development
- 276 upscale apartments with high level finishes
- Free on-street parking
- Adjacent to Assabet River Rail Trail - Walking/Biking Trail
- Close proximity to I-495, I-290, I-2, U.S. Route 20, & Mass Turnpike
- Strategically located in Marlborough's corporate employment hub including BJ's Wholesale Headquarters, Boston Scientific, Hologic, Cytiva, and more.
- Close proximity to downtown Marlborough

## AVAILABLE SPACE

- Available 3,555 sf

## AREA DEMOGRAPHICS

2025 DEMOGRAPHICS	1 MILE	3 MILE	5 MILE
POPULATION	15,944	51,547	89,814
MEDIAN HH INC	\$94,295	\$113,580	\$133,003
AVERAGE HH INC	\$106,634	\$135,395	\$163,879



www.CharterRealty.com



FOR MORE INFORMATION CONTACT:

JEFF ARSENAULT | 781.771.9867 | [JeffA@CharterRealty.com](mailto:JeffA@CharterRealty.com)

WILLIAM LEVENDUSKY | 978.778.6057 | [WilliamL@CharterRealty.com](mailto:WilliamL@CharterRealty.com)

# ALTA FRENCH HILL

303 LINCOLN STREET | MARLBOROUGH, MA 01752

## TENANTS / AVAILABILITY

#	TENANT	Sq. Ft.
A	Aero Coffee Roasters	2,331
B1	Lease Out - - Wine Bar / Book Shop	2,172
B2	Available	3,555

### RETAIL B:

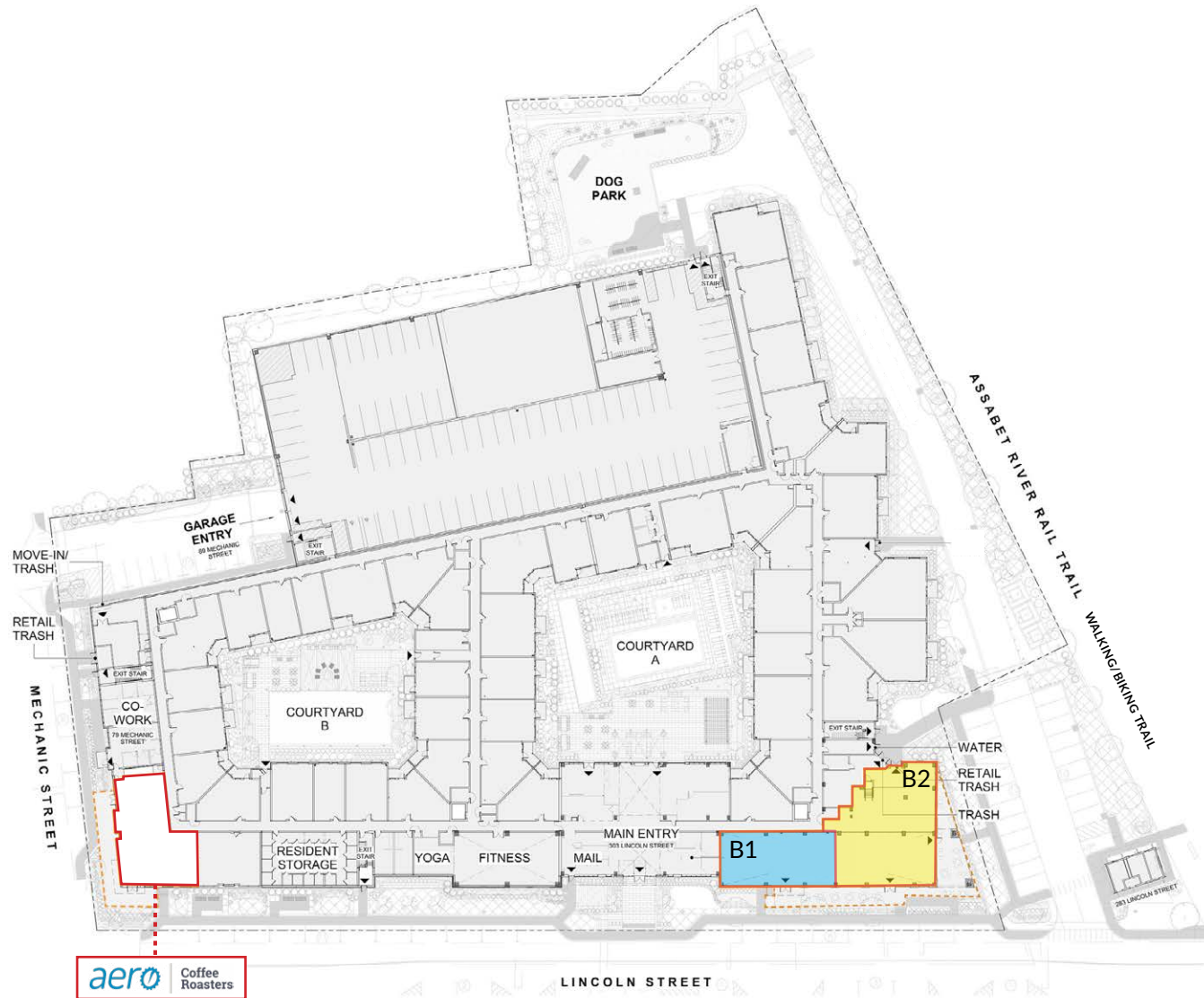
Electrical AMP: 800 AMP

Water Supply: 1 ½" cw capped for B1, 2" cw capped for B2

Gas Supply for Cooking only: 2500 CFH

Mechanical Conduit: 6 - 6" piping holders to roof

Ceiling height: 13' 4"-25'

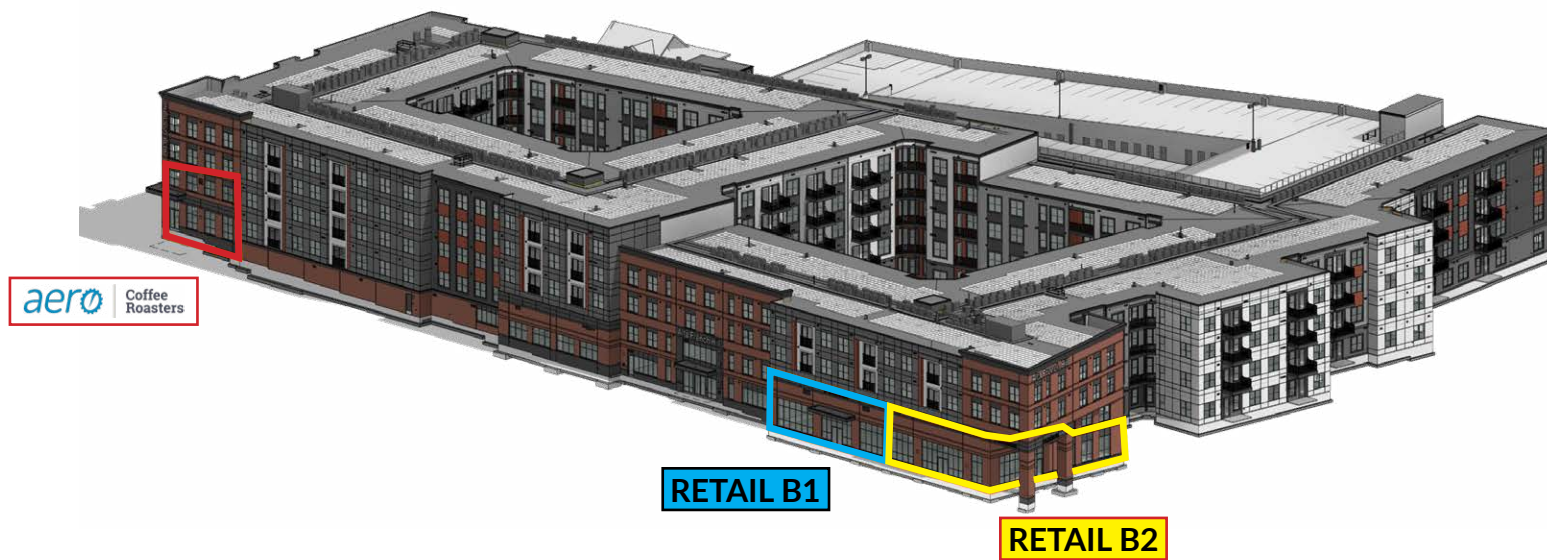
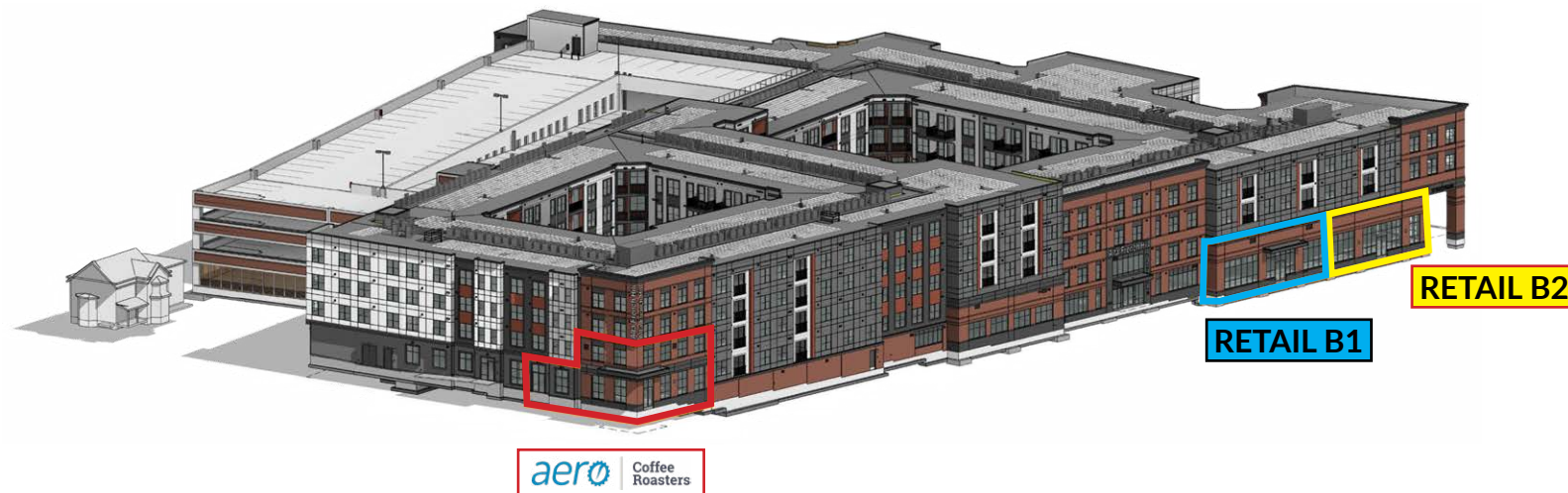


### CHARTER REALTY

Information contained in this document has been reviewed and approved by Charter Realty; however, errors sometimes occur. Charter disclaims any warranty of any kind, expressed or implied, as to any matter whatsoever relating to this service. In no event shall Charter be liable for any indirect, special, incidental or consequential damages arising out of any use of or reliance on any content or materials contained herein.

# ALTA FRENCH HILL

303 LINCOLN STREET | MARLBOROUGH, MA 01752



## CHARTER REALTY

Information contained in this document has been reviewed and approved by Charter Realty; however, errors sometimes occur. Charter disclaims any warranty of any kind, expressed or implied, as to any matter whatsoever relating to this service. In no event shall Charter be liable for any indirect, special, incidental or consequential damages arising out of any use of or reliance on any content or materials contained herein.

# ALTA FRENCH HILL

303 LINCOLN STREET | MARLBOROUGH, MA 01752

## TRADE AREA DEMOGRAPHICS

### 1 MILE RADIUS:



Total Population: **15,944**  
Households: **6,305**  
Daytime Population: **10,940**  
Median Age: **36.8**



Average Household Income: **\$106,634**  
Median Household Income: **\$94,295**

### 3 MILE RADIUS:



Total Population: **51,547**  
Households: **20,920**  
Daytime Population: **48,466**  
Median Age: **40.5**



Average Household Income: **\$135,395**  
Median Household Income: **\$113,580**

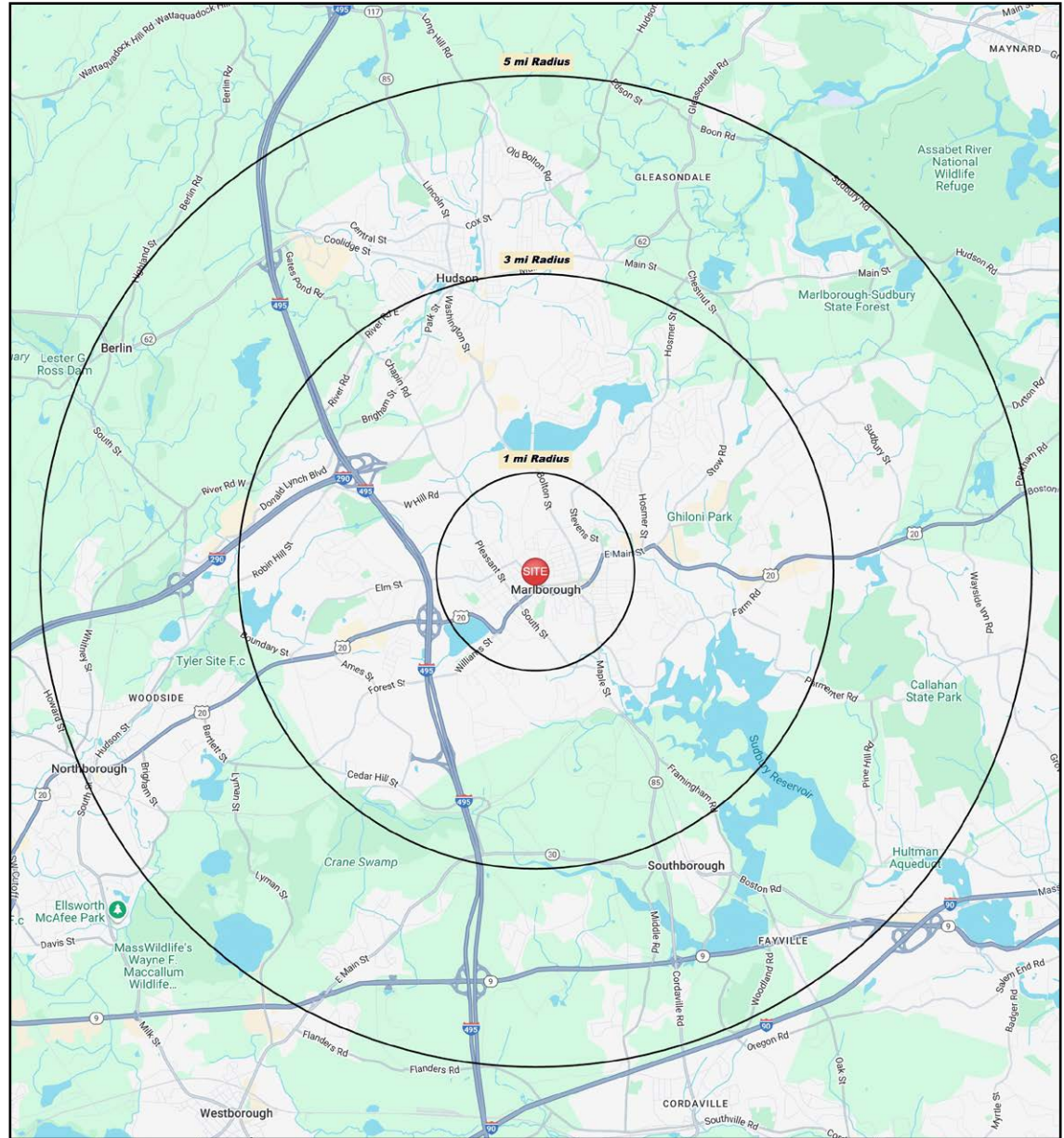
### 5 MILE RADIUS:



Total Population: **89,814**  
Households: **35,595**  
Daytime Population: **93,138**  
Median Age: **41.7**



Average Household Income: **\$163,879**  
Median Household Income: **\$133,003**



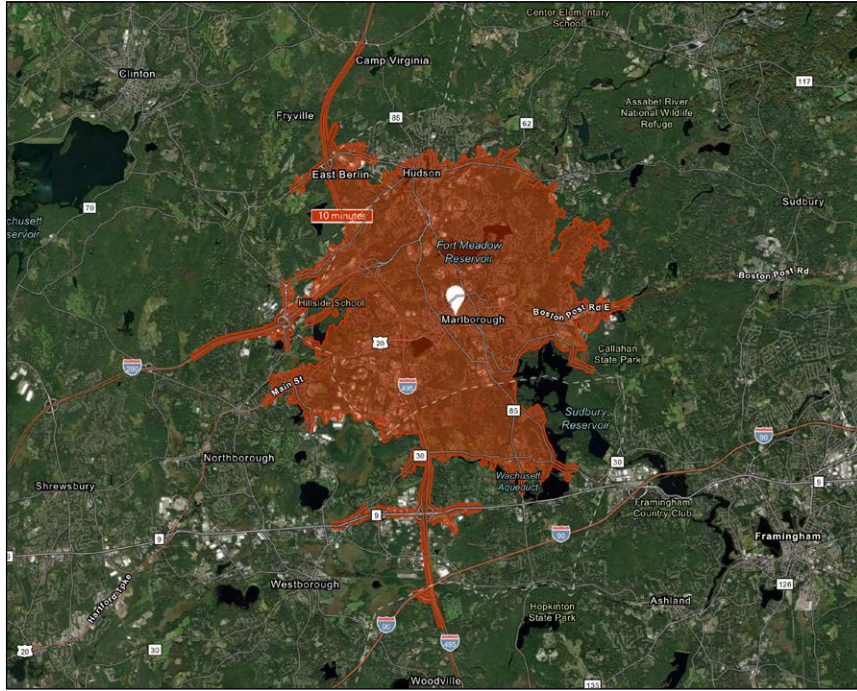
#### CHARTER REALTY

Information contained in this document has been reviewed and approved by Charter Realty; however, errors sometimes occur. Charter disclaims any warranty of any kind, expressed or implied, as to any matter whatsoever relating to this service. In no event shall Charter be liable for any indirect, special, incidental or consequential damages arising out of any use of or reliance on any content or materials contained herein.

# ALTA FRENCH HILL

303 LINCOLN STREET | MARLBOROUGH, MA 01752

**10 MINUTE DRIVE TIME**



## KEY FACTS

**54,681**

Population

**41.0**

Median Age

**\$107,757**

Median Household Income

**64,826**

Daytime Population

## TAPESTRY SEGMENTS

Uptown Lights <i>5,082 households</i>	Trendsetters <i>3,121 households</i>	Savvy Suburbanites <i>2,288 households</i>
<b>Socioeconomic Traits</b> Found in coastal metros like NYC and LA, these diverse, educated neighborhoods include families and singles. Residents earn middle incomes, work in varied fields, often rent older homes, and commute long distances.	<b>Socioeconomic Traits</b> These urban professionals, mostly aged 25–44, are highly educated, often foreign-born, and work in fields like tech and health care. Most rent in dense metros and commute via public transit.	<b>Socioeconomic Traits</b> Concentrated in New England and Mid-Atlantic suburbs, these mostly owner-occupied, single-family homes house professional families with children. Combined incomes and investments place households in middle to upper tiers with high net worth.
<b>Household Types</b> Married couples; singles living alone	<b>Household Types</b> Singles living alone; married couples	<b>Household Types</b> Married couples
<b>Typical Housing</b> Single Family	<b>Typical Housing</b> Multi-Units	<b>Typical Housing</b> Single Family

### TOTAL RETAIL SALES

Includes F&B



**\$702,375,642**

### EDUCATION

Bachelor's Degree or Higher



**47%**

### OWNER OCCUPIED HOME VALUE

Average



**\$796,785**

## ANNUAL HOUSEHOLD SPENDING

**\$5,249**

Eating Out

**\$3,049**

Apparel & Services

**\$9,011**

Groceries

**\$282**

Computer & Hardware

**\$8,646**

Health Care

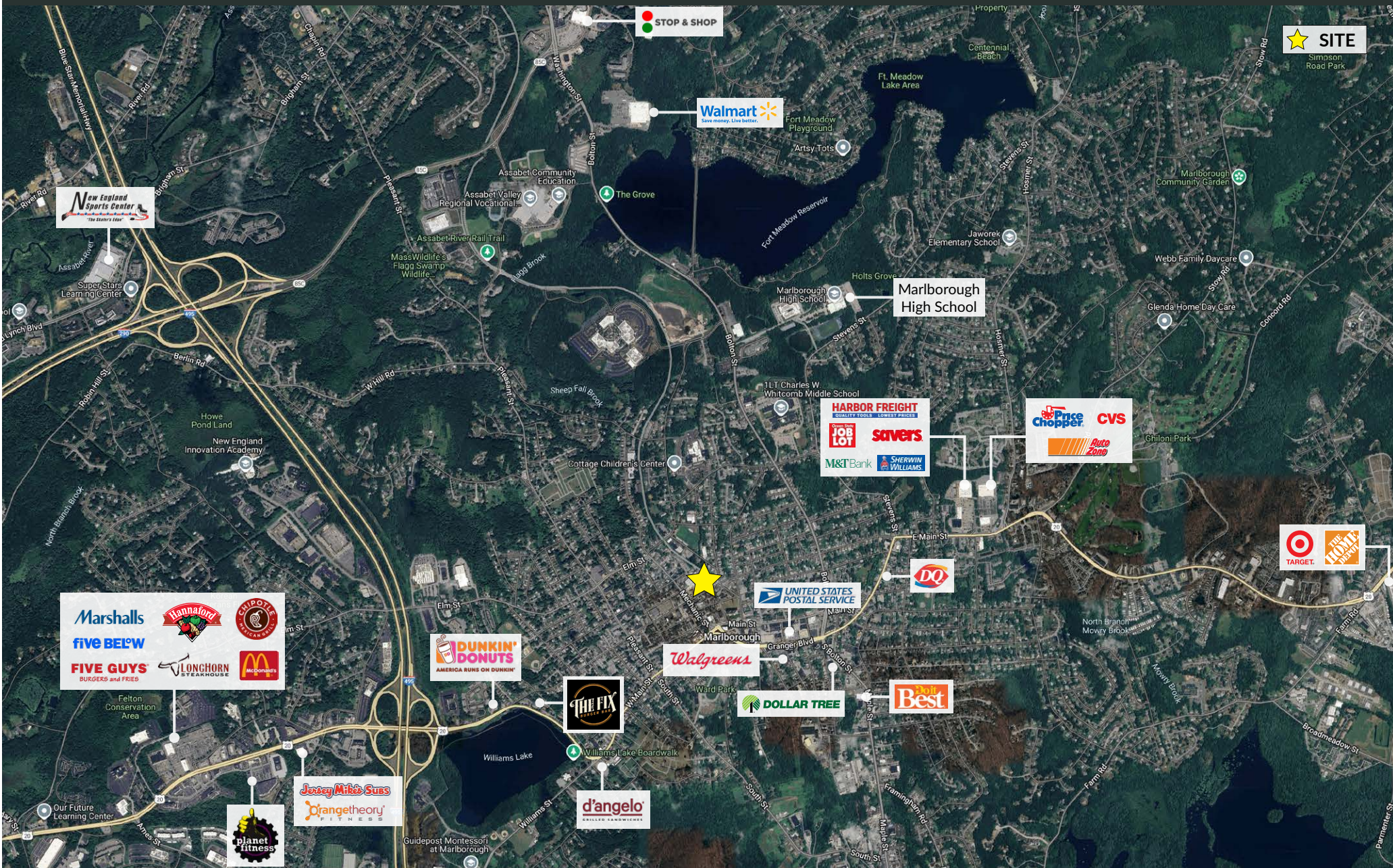


### CHARTER REALTY

Information contained in this document has been reviewed and approved by Charter Realty; however, errors sometimes occur. Charter disclaims any warranty of any kind, expressed or implied, as to any matter whatsoever relating to this service. In no event shall Charter be liable for any indirect, special, incidental or consequential damages arising out of any use of or reliance on any content or materials contained herein.

# ALTA FRENCH HILL

303 LINCOLN STREET | MARLBOROUGH, MA 01752



## CHARTER REALTY

Information contained in this document has been reviewed and approved by Charter Realty; however, errors sometimes occur. Charter disclaims any warranty of any kind, expressed or implied, as to any matter whatsoever relating to this service. In no event shall Charter be liable for any indirect, special, incidental or consequential damages arising out of any use of or reliance on any content or materials contained herein.